

Product datasheet for **RG212998**

Haspin (GSG2) (NM_031965) Human Tagged ORF Clone

Product data:

Product Type:	Expression Plasmids
Product Name:	Haspin (GSG2) (NM_031965) Human Tagged ORF Clone
Tag:	TurboGFP
Symbol:	HASPIN
Synonyms:	GSG2
Mammalian Cell Selection:	Neomycin
Vector:	pCMV6-AC-GFP (PS100010)
E. coli Selection:	Ampicillin (100 ug/mL)



[View online »](#)

ORF Nucleotide Sequence:

>RG212998 representing NM_031965
 Red=Cloning site Blue=ORF Green=Tags(s)

TTTTGTAATACGACTCACTATAGGGCGGCCGGGAATTCGTCGACTGGATCCGGTACCGAGGAGATCTGCC
 GCC**CGCATCGCC**

ATGGCGGCTTCGCTCCCGGGACCTGGGAGCCGGCTTTCCGCACATATGGGGCTGCGGACGGCAGGAGAC
 AGCGGGCGGCCGGCCGGGAAGCCGCGCAGTGGTTCCCGCCGACAGGACCGGAGGCGTTTCTCAACAGCAG
 CGGCAGCAGCGACGCCAGCATCGCGCACCCCTCGCAGTCCGACGATCCTGACGATCCCGACGACCCCGAC
 TTCCCGCGCAGCCCGGTGAGCGGCGCGGAGGCGTCCCGGCGGCGAGTGCCCAAGGACCGGCCAGCC
 TGACCGTGACCCCAAAGCGCTGGAAGCTGCGAGCTCGCCAAAGCCTAACCGTGACCCAAAGACGCTGGG
 GCTGCGAGCTCGGCCCGCAGAAGTGCAGCACACCCCTGCGGCCCGCTCCGACTTCGCCCTTCCCAGC
 CGGACTCCGGCCGCTCAGCCCGACCTCAGCGTGTGCGGCCAGCCAGGGACGGCGACGAGCTGGGCA
 TCAGTGCCTCCCTGTTCACTCTCTGCCCTCGCCCTGCCCGGGTCCCCAACGCCAAGGGACAGTGTCT
 CTCGATCGGCACCTCCGCTGTCTGGTTGACGCTCAGCCGTCCCGAGCGGCCTCCACTCCAGAAAGTC
 TCCTTGACCGAGCATCTCTCCCTGCTCCAGGAGGAAGCGACAGGAGGAGCAAGGACACCGAGGATGG
 TCCACCAAACCCGCGCCAGCCTCAGGTCAGTTCTCTTTGGCCTTATGAACTCAGGAACCCCTGAGGATTC
 TGAGTTTCGGGCAGATGGGAAGAATATGAGAGAGTCTGCTGTAAAAGGAAAAGTGGTGGTGGGAAATGGA
 CCAGAGGGTCCAGGTCTGTCAAGCACAGGCAAGAGGAGGGCCACAGGCCAGGACTCTTGTCAAGAGAGAG
 GGCTTCAAGAGGGCGTCCGGAGAGAGCATCAGGAGGCCAGTGTCCCAAGGGCCGATTGTGCCAAGGGG
 AATAGACAGGCTGGAGAGAACTAGATCAAGCCGGAAGAGCAAACATCAGGAGGCAACGGAAAACCTCTCTC
 CTCCATCCCACCGCTTTAAAAGGGCCAAAAGCTGGGAAAAGATTGTTCCCCACCCAGGACCTGACTC
 CTTTACAGAATGTCTGCTTTGGACCAAACAGGGCTTCCTTCAGTTTCCACAAGAAGAAAATTTGTGAC
 TGATGTGTCAGAGGTCTGCAGCATCTATACCCTGACACTTCTCTCTCTGGATCCCTCTATCAGAAATGT
 TCAAACCGGCTGTGATGAACAGAAAGTGGTCTCCGCTCTTGGCACTCCTCCTATGATTTTGC
 TAAGCCCTTAAACACTTAAGTATTTCAAACAAAAGGCATCTGATGCTGAAAAGGTTTATGGGAATG
 CAGTCAGAAGGGTCTGTCCCCTTAGCCATTGCCTTCCACAGAAAACTGCAACGCTGTGAGAAGATT
 GGGGAAGGGTGTGGCGAAGTGTTCAAACAATTGCTGATCACACACCCGTAGCCATAAAAAATCATTG
 CTATTGAAGGACCAGATTTAGTCAATGGATCCCATCAGAAAACCTTTGAGGAAATCCTGCCAGAGATCAT
 CATCTCAAAGAGTTGAGCCTCTATCCGGTGAAGTGTGCAACCGCACAGAAGGCTTTATCGGGCTGAAC
 TCAGTGCCTGTGTCAGGGATTTACCCTCCCTGCTCCTCAAAGCCTGGGATCACTATAATTCAACCA
 AAGGCTCTGCAAATGACCGGCCTGATTTTTTTAAAGACGACCGCTTCTCATTGTGCTGGAATTTGAGTT
 TGGAGGGATTGACTTAGAGCAAATGCGAACCAAGTTGTCTTCTTGGCTACTGCAAAGAGCATTCTACAC
 CAGCTCACAGCCTCCCTCGCAGTGGCAGAGGCATCACTGCGCTTTGAGCACCGAGACTTACACTGGGGGA
 ACGTGCTCTTAAAGAAAACCGCCTCAAAAACTCCACTACACCTCAATGGGAAGAGCAGCACTATCCC
 CAGCTGTGGGTTGCAAGTGAAGTCACTTACTACACCTGTGCGCTTGGAACGGGATGGGATTGTGGTT
 TTCTGTGACGTTTCCATGGATGAGGACCTGTTTACCGGTGACGGTACTACCAGTTTACATCTACAGGC
 TCATGAAGAAGGAGAATAACAACCGTGGGGTGAATATCACCTTATAGTAATGTGCTCTGGTTACATTA
 CCTGACAGACAAGATGCTGAAACAAATGACCTTCAAGACTAAATGTAACACTCCTGCCATGAAGCAAAT
 AAGAGAAAAATCCAGGATTTCCACAGACAATGCTGAACCTCAGCTCTGCCACTGACTTGTCTGCCAGC
 ACAGTCTGTTAAG

ACGCGTACGCGGCCGCTCGAG - GFP Tag - GTTTAA

Protein Sequence: >RG212998 representing NM_031965
 Red=Cloning site Green=Tags(s)

```

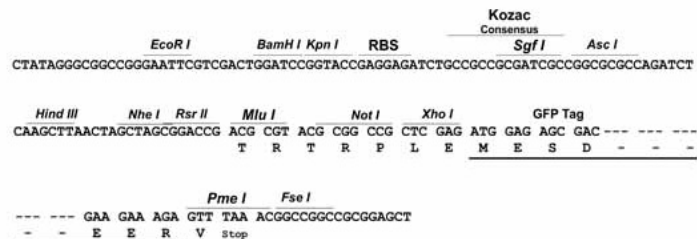
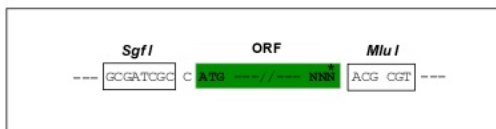
MAASLPGPSRLFRTYGAADGRRQRRPGREAAQWFPPQDRRRFFNSSGSSDASIGDPSQSDDPDDPDDPD
FPGSPVRRRRRRPGGRVPKDRPSLTVTPKRWKLRARPSLTVTPRRLGLRARPPQKCSTPCGRLRPPFPS
RDSGRLSPDLSVCGQPRDGDDELGISASLFSLASPCPGSPTPRDSVISIGTSACLVAASAVPSGLHLPEV
SLDRASLPCSQEEATGGAKDTRMVHQTRASLRSVLFGLMNSGTPEDSEFRADGKNMRESCCKRKL VVGNG
PEGPGLSSTGKRRATGQDSCQERLQEAVRREHQEASVPKGRIVPRGIDRLERTRSSRKSKHQEATETSL
LHSHRFKKGQKLGKDSFPTQDL TPLQNVCFWTKTRASFHFHKKIIVTDVSEVCSIYTTATSLSGSLLSEC
SNRPVMNRTSGAPSSWHSSSMYLLSPLNTLSISNKKASDAEKVYGECSQKGPVPPFSHCLPTEKLQRCEKI
GEGVFGEVFQTIADHTPVAIKIIAIEGPDLVNGSHQKTFEEILPEIIISKELSLLSGEVCNRTEGFIGN
SVHCVQGSYPPLLLKAWDHYNSTKGSANDRPDFFKDDQLFIVLEFEFGGIDLEQMRTKLSSLATAKSILH
QLTASLAVAEASLRFEHRDLHWGNVLLKKTSLKKLHYTLNGKSSSTIPSCGLQVSIIDYTL SRLERDGIVV
FCDVSMDEDLFTGDGDYQFDIYRLMKKENNRWGEYHPYSNVLWLHYLTDKMLKQMTFKTKCNTPAMKQI
KRKIQEFHRTMLNFSSATDLLCQHSLFK
  
```

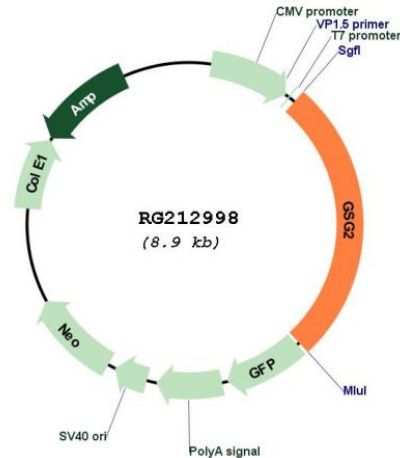
TRTRPLE - GFP Tag - V

Restriction Sites: Sgfl-MluI

Cloning Scheme:

Cloning sites used for ORF Shutting:



Plasmid Map:


ACCN: NM_031965

ORF Size: 2394 bp

OTI Disclaimer: The molecular sequence of this clone aligns with the gene accession number as a point of reference only. However, individual transcript sequences of the same gene can differ through naturally occurring variations (e.g. polymorphisms), each with its own valid existence. This clone is substantially in agreement with the reference, but a complete review of all prevailing variants is recommended prior to use. [More info](#)

OTI Annotation: This clone was engineered to express the complete ORF with an expression tag. Expression varies depending on the nature of the gene.

Components: The ORF clone is ion-exchange column purified and shipped in a 2D barcoded Matrix tube containing 10ug of transfection-ready, dried plasmid DNA (reconstitute with 100 ul of water).

Reconstitution Method:

1. Centrifuge at 5,000xg for 5min.
2. Carefully open the tube and add 100ul of sterile water to dissolve the DNA.
3. Close the tube and incubate for 10 minutes at room temperature.
4. Briefly vortex the tube and then do a quick spin (less than 5000xg) to concentrate the liquid at the bottom.
5. Store the suspended plasmid at -20°C. The DNA is stable for at least one year from date of shipping when stored at -20°C.

RefSeq: [NM_031965.2](#), [NP_114171.2](#)

RefSeq Size: 2797 bp

RefSeq ORF: 2397 bp

Locus ID: 83903

UniProt ID: [Q8TF76](#)

Cytogenetics: 17p13.2

Protein Families: Druggable Genome, Protein Kinase

Gene Summary: Serine/threonine-protein kinase that phosphorylates histone H3 at 'Thr-3' (H3T3ph) during mitosis. May act through H3T3ph to both position and modulate activation of AURKB and other components of the chromosomal passenger complex (CPC) at centromeres to ensure proper chromatid cohesion, metaphase alignment and normal progression through the cell cycle.[UniProtKB/Swiss-Prot Function]