

## Product datasheet for **RG212997**

### **DTX2 (NM\_001102594) Human Tagged ORF Clone**

#### **Product data:**

Product Type:	Expression Plasmids
Product Name:	DTX2 (NM_001102594) Human Tagged ORF Clone
Tag:	TurboGFP
Symbol:	DTX2
Synonyms:	RNF58
Mammalian Cell Selection:	Neomycin
Vector:	pCMV6-AC-GFP (PS100010)
E. coli Selection:	Ampicillin (100 ug/mL)



[View online »](#)

**ORF Nucleotide Sequence:**

>RG212997 representing NM\_001102594  
 Red=Cloning site Blue=ORF Green=Tags(s)

TTTTGTAATACGACTCACTATAGGGCGGCCGGAATTCGTGACTGGATCCGGTACCGAGGAGATCTGCC  
 GCC**GCGATCGCC**

ATGGCCATGGCCCAAGCCCTTCCTGGTGCAGGTGTACACCAGCCCGGGCTGTGGCCGTGTGGGAAT  
 GGCAGGACGGGCTGGGCACCTGGCACCCCTACAGTGCCACCGTCTGCAGCTTCATCGAGCAGCAGTTTGT  
 CCAGCAGAAGGGCCAACGTTTTGGGCTTGGGAGCCTGGCCACAGCATCCCTTGGGCCAGGCAGACCC  
 TCGCTGGCCCTTACATTATTGACCTCCCCAGCTGGACCCAGTTCGCCAGGACACCGGCACCATGCGGG  
 CTGTGCGGAGACACTGTTCCCCAGCACTCAGCCCTGGCCGAGGTGTCGTCTGGGAGTGGCTGAGCGA  
 CGATGGCTCCTGGACTGCCTATGAAGCCAGCGTCTGTGACTATCTGGAGCAGCAGGTGGCCAGGGGCAAC  
 CAGCTCGTGGACTTGGCCCCCTGGGGTACAACACTACACTGTCACTACACCACCCACACGCAGACCAACA  
 AGACTTCCAGCTTCTGCCGACGCTGCGCGCCAAGCAGGGCCGCTTACCCGGTACCACCATCATCGC  
 TCCGCCGGGCCACACAGGCGTGCCTGCTTGGCACCAGTGCCTCAGTGGCAGCAGAATGGCCCCGTG  
 TCAGGCCGCTACCGCCACTCCATGACCAACCTCCCTGCATACCCCGTCCCCAGCACCCCCACACAGGA  
 CCGCTTCTGTGTTTGGGACCCACCAGGCCCTTGCACCGTACAACAACCCCTCACTCTCCGGGGCCCGGTC  
 TGCGCCAGGCTGAACACCACCAACGCCTGGGGCGCAGCTCCTCCTTCCCTGGGGAGCCAGCCCTCTAC  
 CGCTCCAGCCTCTCCACCTGGGACCGCAGCACCTGCCCCAGGATCCTCCACCTCCGGTGCAGTCAGTG  
 CCTCCCTCCCCAGCGGTCCCTCAAGCAGCCAGGGAGCGTCCCTGCCACTGTGCCATGCAGATGCCAAA  
 GCCCAGCAGAGTCCAGCAGGCGCTCGCAGGCATGACGAGTGTCTGATGTAGCCATTGGACTCCCTGTG  
 TGTCTTAGCCGCGCACCCAGCCACCAGCCCTCCGCTCCCGTCTGGCTTCCAAAAGTACGCGCTCAG  
 TTAAGGATTGAGGAAAATGTCCGTGAAAGGAGCGACCCCGAAGCCAGAGCCAGAGCCAGAGCAGTGCAT  
 AAAAACTACACGGAAGAGCTGAAAGTGCCCCAGATGAGGACTGCATCATCTGCATGGAGAAGCTGTCC  
 ACAGCGTCTGGATACAGCGATGTGACTGACAGCAAGGCAATCGGGTCCCTAGCTGTGGGCCACTCACCA  
 AGTGCAGCCATGCCTTCCACCTGCTGTGCTCCTGGCCATGACTGCAACGGCAATAAGGATGGAAGTCT  
 GCAGTGTCCCTCTGAAAACCATCTATGGAGAGAAGACGGGACCCAGCCAGGAAAGATGGAGGTA  
 TTACGGTTCAGATGTGCTCCCGGCCACGAGGACTGCGGGACCATCCTCATAGTTTACAGCATTCCCC  
 ATGGTATCCAGGGCCCTGAGCACCCCAATCCCGGAAAGCCGTTCACTGCCAGAGGTTTCCCGCCAGTG  
 CTACCTCCAGACAACGCCAGGGCCGCAAGTCTAGAGCTCCTGAAGGTGGCCTGGAAGAGGCGGCTC  
 ATCTTACAGTGGGCACGTCCAGCACCAGGGTGAGACGGACACCGTGGTATGGAACGAGATCCACCACA  
 AGACAGAGATGGACCGCAACATTACGGGCCACGGCTATCCCGACCCCAACTACCTGCAGAACGTGCTGGC  
 TGAGCTGGCTGCCAGGGGGTGACCGAGGACTGCCTGGAGCAGCAG

**ACGCGTACGCGGCCGCTCGAG** - GFP Tag - GTTTAA

**Protein Sequence:**

>RG212997 representing NM\_001102594  
 Red=Cloning site Green=Tags(s)

MAMAPSPSLVQVYTPAAVAVWEWQDGLGTHWHPYSATVCSFIEQQFVQQKQRFGLGSLAHSIPLGQADP  
 SLAPYIIDLPSWTQFRQDTGTMRAVRRHLFPQHSAPGRGVVWELSDDGSWTAYEASVCDYLEQQVARGN  
 QLVDLAPLGYNYTVNYTHTQTNKTSFRCRSVRRQAGPPYPVTTIIAPPGHTGVACSCHQCLSGSRTGPV  
 SGRYRHSMTNLPAYVPQHPPHRTASVFGTHQAFAPYNKPSLSGARSAPRLNTTNAWGAAPPSLGSQPLY  
 RSSLSHLGPQHLPPGSSTSGAVSASLPSGSSSPGVPATVPMQMPKPSRVQQALAGMTSVLMSAIGLPV  
 CLSRAPQPTSPASRLASKSHGSVKRLRKMSVKGATPKPEPEPEQVIKNYTEELKVPPDEDICIICMEKLS  
 TASGYSVDVDSKAIGSLAVGHLTKCSHAFHLLCLLAMYCNGNKDGLQCPCKTIYGEKGTQPQGMKMEV  
 LRFQMSLPGHEDCGTILIVYSIPHGIQGPPEHPNPKPFTARGFPRQCYLPDNAQGRKVLLELLKVAVKRRR  
 IFTVGTSSSTTGETDTVVWNEIHHKTEMDRNITGHGYPDPNYLQNVLAELAAQGVTEDCLEQQ

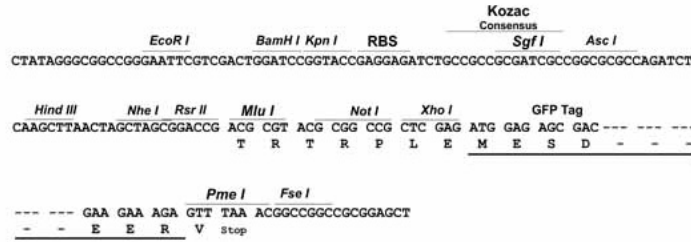
**TRTRPLE** - GFP Tag - V

**Restriction Sites:**

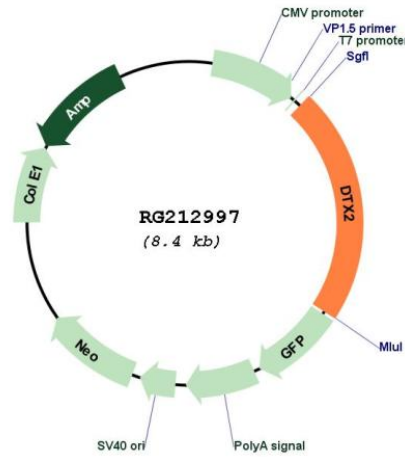
SgfI-MluI

Cloning Scheme:

Cloning sites used for ORF Shutting:



Plasmid Map:



ACCN: NM\_001102594  
 ORF Size: 1866 bp

<b>OTI Disclaimer:</b>	The molecular sequence of this clone aligns with the gene accession number as a point of reference only. However, individual transcript sequences of the same gene can differ through naturally occurring variations (e.g. polymorphisms), each with its own valid existence. This clone is substantially in agreement with the reference, but a complete review of all prevailing variants is recommended prior to use. <a href="#">More info</a>
<b>OTI Annotation:</b>	This clone was engineered to express the complete ORF with an expression tag. Expression varies depending on the nature of the gene.
<b>Components:</b>	The ORF clone is ion-exchange column purified and shipped in a 2D barcoded Matrix tube containing 10ug of transfection-ready, dried plasmid DNA (reconstitute with 100 ul of water).
<b>Reconstitution Method:</b>	<ol style="list-style-type: none"> <li>1. Centrifuge at 5,000xg for 5min.</li> <li>2. Carefully open the tube and add 100ul of sterile water to dissolve the DNA.</li> <li>3. Close the tube and incubate for 10 minutes at room temperature.</li> <li>4. Briefly vortex the tube and then do a quick spin (less than 5000xg) to concentrate the liquid at the bottom.</li> <li>5. Store the suspended plasmid at -20°C. The DNA is stable for at least one year from date of shipping when stored at -20°C.</li> </ol>
<b>RefSeq:</b>	<a href="#">NM_001102594.1</a> , <a href="#">NP_001096064.1</a>
<b>RefSeq Size:</b>	2715 bp
<b>RefSeq ORF:</b>	1869 bp
<b>Locus ID:</b>	113878
<b>UniProt ID:</b>	<a href="#">Q86UW9</a>
<b>Cytogenetics:</b>	7q11.23
<b>Protein Families:</b>	Druggable Genome
<b>Protein Pathways:</b>	Notch signaling pathway
<b>Gene Summary:</b>	DTX2 functions as an E3 ubiquitin ligase (Takeyama et al., 2003 [PubMed 12670957]). [supplied by OMIM, Nov 2009]