

Product datasheet for **RG212990**

SPCA2 (ATP2C2) (NM_014861) Human Tagged ORF Clone

Product data:

Product Type:	Expression Plasmids
Product Name:	SPCA2 (ATP2C2) (NM_014861) Human Tagged ORF Clone
Tag:	TurboGFP
Symbol:	ATP2C2
Synonyms:	SPCA2
Mammalian Cell Selection:	Neomycin
Vector:	pCMV6-AC-GFP (PS100010)
E. coli Selection:	Ampicillin (100 ug/mL)



[View online »](#)

**ORF Nucleotide
Sequence:**

>RG212990 representing NM_014861
 Red=Cloning site Blue=ORF Green=Tags(s)

TTTTGTAATACGACTCACTATAGGGCGGCCGGAATTCGTCGACTGGATCCGGTACCGAGGAGATCTGCC
 GCC**CGGATCGCC**

ATGCTGCATTTCCATTTGTTGAAATTTAAGACCAGAGTCATCTTTCTGCTGTAATTATAATGGTCACTG
 GCTTGTGCCTTTTCTCCTCTCTGCCCCATCTGCACGGGTCTTTGAACAAGTCCCAGCACCTTGGTG
 GACAAGCCTGTGTCCCTGGCCCATCATGGAAGCCGCTGCCTTTCAGAGTGGGAGTCTGTACCCTGTTGCC
 TCATTCTTGTGCGCCCATGAGTGAGCTTGTGCCTGACCTCTCCTTCCAGGTGGACTTACACACTGGGC
 TGTGCGAGTTCTCGGTGACGCAGCGCCGCTGGCCATGGCTGGAATGAGTTTGTGCTGACAACAGCGA
 ACCTGTGTGGAAGAAATACCTGGATCAGTTAAGAACCCCTGATCCTGCTGCTGCTGGGCTCTGCCCTG
 GTGAGTGTCTCACCAGGAGTATGAGGACGCCGTCAGCATCGCCACGGCAGTCTTGTGCTGGTCACTG
 TCGCCTTCATCCAGGAGTACAGGTGGGAAATCTCTGGAAGAGCTGACCAAGCTGGTTCCTCCAGAATG
 TAACTGCCTAAGAGAAGGAAAATCCAGCACCTGCTTGTGCTGAGAACTGGTTCTGGTGATGTCGTATCT
 CTCTCGATCGGAGACCGGATCCCTGCAGACATCCGACTCACTGAGGTACGGACCTCTTGGTGGATGAAT
 CCAAGTTTACCGGGGAAGCCGAGCCATGTAGTAAAACAGACAGCCCTTGACAGGCGGTGGGGACCTCAC
 CACCCTCAGCAACATCGTCTTATGGGGACCCTGGTGCAGTATGGGAGGGGCCAGGGGTCGTGATTGGA
 ACAGGGGAAAGCTCTCAGTTCGGAGAAGTGTAAAGATGATGCAGGCTGAAGAGACACCTAAAACCTCTT
 TGCAGAAAAGCATGGACAGGCTAGGAAAGCAACTGACACTCTTCTCCTTTGGCATAATCGGTCTCATCAT
 GCTCATTGGCTGGTCGCAAGGGAAACAACCTCTGAGTATGTTACAGATCGGGGTGAGCTGGCTGTGGCG
 GCTATTCAGAGGGTCTGCCATCGTCGTATGGTGACGCTGGTCTGGGAGTCTGCGGATGGCCAAGA
 AGCGGGTCATCGTGAAGAAGTTACCCATCGTGGAGACTTTAGTTGCTGCAGCTTCTCTGTTCTGACAA
 GACGGGGACTCTGACTGCCAATGAAATGACAGTGACCCAGCTTGTAACTGAGATGGGCTTCGTGCCGAG
 GTCAGCGGAGTTGGGTATGACGGTCAAGGGACTGTGTGCTTCTACCATCCAAGGAAGTCATTAAGGAAT
 TTTCCAATGTCTCAGTGGGAAAGTTAGTGGAGGCGGGCTGTGTTGCCAACAATGCGGTATCAGAAAAGAA
 CGCCGTGATGGGGCAGCCACCGAGGGTGCATTGATGGCCTGGCGATGAAGATGGACTTAAAGTATATT
 AAAAAATCATATATAAGAAAAAAGAGATTCCATTGAGTTCAGAGCAGAAGTGGATGGCGGTGAAATGCA
 GTCTGAAGACTGAGGATCAGGAAGACATTTACTTCATGAAAGGGGCTTGGAAAGAGTATCCGCTACTG
 CACCATGTACAACACGGGGCATCCCCCTGCCGCTGACGCCCCAGCAGAGGTCTTCTGCCTGCAGGAA
 GAGAAGAGGATGGGGTCTCGTTCGGGTGCTGGCCCTGGCTTCTGGGCCGAGCTGGGGCGGCTGA
 CGTTTCTAGGTCTTGTGGGCATATTGACCCCCGAGAGTTGGCGTGAAGGAAGCAGTCCAGGTTCTCTC
 CGAGTCTGGTGTGTCTGTGAAGATGATAACGGGGGATGCCCTGGAGACGGCCTTGCCATAGGAAGAAAC
 ATCGGCCCTGTGCAACGGGAAGCTGCAAGCCATGTCCGGGGAGGAGGTGGACAGCGTGGAGAAGGGCGAGC
 TGGCCGACCGCTGGGGAAGGTGTCCGTGTTCTCAGGACCAGCCAAAGCACAAGCTCAAAATCATCAA
 GGCTCTGCAGGAGTACGGGGCATCGTGGCCATGACTGGGGATGGGGTGAACGACGCAGTGGCCCTGAAG
 TCTGCAGACATTGGGATCGCCATGGGGCAGACAGGGACGACGTCAGCAAAGAGGCCCAACATGATCC
 TGGTGGATGATGACTTCTCAGCCATCATGAATGCAGTGGAGGAAGGCAAGGGTATTTTTTACAACATCAA
 AAACCTTGTCCGATTCCAGCTGAGCACGAGCATCTCCGCCCTGAGTCTCATCACTCTGCCACCGTGTTC
 AACCTGCCAGCCCCCTCAACGCCATGCAGATCCTATGGATCAACATCATCATGGATGGGCCACCGGCGC
 AGAGCTTGGGGTAGAGCCGTTGACAAAAGACGCCTTCAGGCAGCCACCACGGAGTGTGCGGGACCCAT
 CCTCAGCAGAGCCCTCATCCTGAAGATCCTCATGTCCGCGCCATCATCATCAGCGGGACCCTCTTTATC
 TTCTGGAAGGAGATGCCTGAAGACAGAGCAAGCACTCCCCGACCCAGCAGATGACGTTCACTTGTTTTG
 TGTTTTTCGATCTCTTCAACGCCTTGACCTGCCGCTCTCAGACCAAGCTGATATTTGAGATCGGCTTTCT
 CAGGAACCACATGTTCTCTACTCCGCTCTGGGTCCATCCTGGGCAGCTGGCGGTCAATTTACATCCCC
 CCGCTGCAGAGGGTCTTCCAGACGGAGAACCTGGGAGCGCTTGATTTGCTGTTTTAACTGGATTGGCT
 CATCCGTCTTCAATTTGTGAGAGCTCTCAAACATATGTGAAAAAATACTGTTGCAGCCCCAAGAGAGTCCA
 GATGCACCCTGAAGATGTG

AG**CGGACCG**ACGCGTACGCGGCCGCTCGAG - GFP Tag - GTTTAA

Protein Sequence: >RG212990 representing NM_014861
 Red=Cloning site Green=Tags(s)

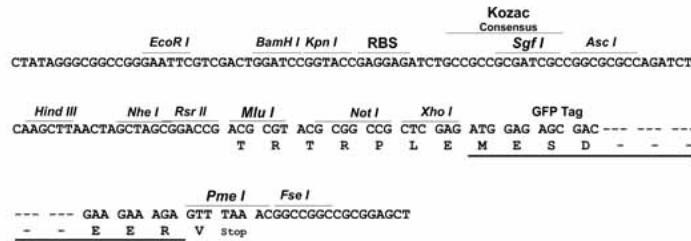
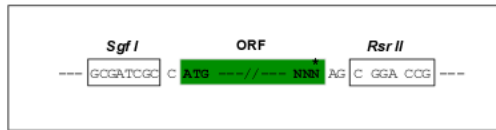
MLHFHLLKFKTRVIFSAVIIMVTGLCLFLLSLPHLHGVEQVPAPWWTSLCPWPIMEAAAFQSGSLYPVA
 SFLAAPMSELVPDL SFQVDLHTGLSEFSVTQRRLAHGWNFVADNSEPVWKYLDQFKNPLILLLLGSAL
 VSVLTKEYEDAVSIATAVLVVVTVAFIQEYRSEKSLLEELTKLVPPECNCLREGKLQHLLARELVPGDVVS
 LSI GDRIPADIRL TEVTDLLVDESSFTGEAEPCKTDSPLTGGDDLTTLSNIVFMGTLVQYGRGQGVVIG
 TGESSQFGEVFKMMQAEETPKTLPKQKSMRDLGKQLTLFSFGIIGLIMLIGWSQKQLLSMFTIGVSLAVA
 AIPEGLPIVVMVTLVLGVL RMAKKRVI VKKLP I VETLGCCSVLCSDKTGTLTANEMTVTQLVTS DGLRAE
 VSGVGYDQGQTVCLLPSKEVIKEFSNVSVGKLEAGCVANNAVIRKNAV MQPTEGALMALAMKMDLSDI
 KNSYIRKKEIPFSSEQKWM AVKCSLKTEDQEDIYFMKGALEEVIRYCTMYNNGGIPLPLTPQQRSFCLQE
 EKRMGSLGLRVLALASGPELGRLTFLGLVGIIDPPRVGVKEAVQVLESGVSVKMITGDALETALAI GRN
 IGLCNGK LQAMSGEEVDSVEKGE LADRVGKVS VFFRTSPKHKLKIIKALQESGAI VAMTGDGVNDAVALK
 SADIGIAMGQTGTDVSKEANMILVDDDFSAIMNAVEEGKGI FYNIKNFVRFQLSTSISALSLITLSTVF
 NLPSP LNAMQILWINIIMDGPPA QSLGVEPVDKDAFRQPPRSVRD TILSRALILKILMSAAIIISGTLFI
 FWKEMPEDRASTPRTTTMTFTCFVFFDLFNALTCRSQTKLIFEIGFLRNHMF LYSVLG SILGQLAVIYIP
 PLQRVFTENL GALDLLFLTGLASSVFILSELLK LCEKYCCSPKRVMHPEDV

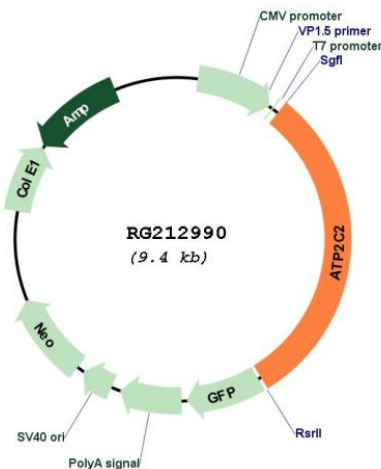
SGPTRRRLE - GFP Tag - V

Restriction Sites: SgfI-RsrII

Cloning Scheme:

Cloning sites used for ORF Shuttling:



Plasmid Map:


ACCN: NM_014861

ORF Size: 2889 bp

OTI Disclaimer: The molecular sequence of this clone aligns with the gene accession number as a point of reference only. However, individual transcript sequences of the same gene can differ through naturally occurring variations (e.g. polymorphisms), each with its own valid existence. This clone is substantially in agreement with the reference, but a complete review of all prevailing variants is recommended prior to use. [More info](#)

OTI Annotation: This clone was engineered to express the complete ORF with an expression tag. Expression varies depending on the nature of the gene.

Components: The ORF clone is ion-exchange column purified and shipped in a 2D barcoded Matrix tube containing 10ug of transfection-ready, dried plasmid DNA (reconstitute with 100 ul of water).

Reconstitution Method:

1. Centrifuge at 5,000xg for 5min.
2. Carefully open the tube and add 100ul of sterile water to dissolve the DNA.
3. Close the tube and incubate for 10 minutes at room temperature.
4. Briefly vortex the tube and then do a quick spin (less than 5000xg) to concentrate the liquid at the bottom.
5. Store the suspended plasmid at -20°C. The DNA is stable for at least one year from date of shipping when stored at -20°C.

RefSeq: [NM_014861.1](#), [NP_055676.1](#)

RefSeq Size: 3600 bp

RefSeq ORF: 2841 bp

Locus ID: 9914

UniProt ID: [O75185](#)

Cytogenetics:	16q24.1
Domains:	E1-E2_ATPase, Cation_ATPase_N, Hydrolase, Cation_ATPase_C
Protein Families:	Druggable Genome, Transmembrane
Gene Summary:	This magnesium-dependent enzyme catalyzes the hydrolysis of ATP coupled with the transport of calcium.[UniProtKB/Swiss-Prot Function]