

## Product datasheet for **RG212959**

### FLRT3 (NM\_013281) Human Tagged ORF Clone

#### Product data:

Product Type:	Expression Plasmids
Product Name:	FLRT3 (NM_013281) Human Tagged ORF Clone
Tag:	TurboGFP
Symbol:	FLRT3
Synonyms:	HH21
Mammalian Cell Selection:	Neomycin
Vector:	pCMV6-AC-GFP (PS100010)
E. coli Selection:	Ampicillin (100 ug/mL)



[View online »](#)

**ORF Nucleotide Sequence:**

>RG212959 representing NM\_013281  
 Red=Cloning site Blue=ORF Green=Tags(s)

TTTTGTAATACGACTCACTATAGGGCGGCCGGAATTCGTCGACTGGATCCGGTACCGAGGAGATCTGCC  
 GCC**GCGATCGCC**

ATGATCAGCGCAGCCTGGAGCATCTTCCTCATCGGGACTAAAATTGGGCTGTTCTTCAAGTAGCACCTC  
 TATCAGTTATGGCTAAATCCTGTCCATCTGTGTGCTGCGATGCGGGTTTCATTTACTGTAATGATCG  
 CTTTCTGACATCCATTCCAACAGGAATACCAGAGGATGCTACAACCTCTACCTCAGAACAACCAATA  
 AATAATGCTGGGATTCCTTCAGATTTGAAAACTTGCTGAAAGTAGAAAGAATATACCTATACCACAACA  
 GTTTAGATGAATTTCTACCAACCTCCCAAAGTATGTAAGAGGTTACATTTGCAAGAAAATAACATAAG  
 GACTATCACTTATGATTCACCTTCAAAAATCCCTATCTGGAAGAATTACATTTAGATGACAACCTGTGC  
 TCTGCAGTTAGCATAGAAGAGGGAGCATTCCGAGACAGCAACTATCTCCGACTGCTTTTCTGTCCCGTA  
 ATCACCTTAGCACAATCCCTGGGGTTGCCAGGACTATAGAAGAACTACGCTTGGATGATAATCGCAT  
 ATCCACTATTTTATCACCATCTCTCAAGGTCTCACTAGTCTAAAACGCCTGGTTCTAGATGGAAACCTG  
 TTGAACAATCATGGTTTAGGTGACAAAAGTTTTCTCAACCTAGTTAATTTGACAGAGCTGTCCCTGGTGC  
 GGAATTCCTGACTGCTGCACCAGTAAACCTTCCAGGCACAAACCTGAGGAAGCTTTATCTTCAAGATAA  
 CCACATCAATCGGGTGCCCCAAATGCTTTTTCTTATCTAAGGCAGCTCTATCGACTGGATATGTCCAAT  
 AATAACCTAAGTAATTTACCTCAGGGTATCTTTGATGATTTGGACAATAACACAACCTGATTCTTCGCA  
 ACAATCCCTGGTATTGCGGGTGCAAGATGAAATGGGTACGTGACTGGTTACAATCACTACCTGTGAAGGT  
 CAACGTGCGTGGGCTCATGTGCCAAGCCCCAGAAAAGTTTCGTGGGATGGCTATTAAGGATCTCAATGCA  
 GAACCTGTTGATTGTAAGGACAGTGGGATTGTAAGCACCATTAGATAACCACTGCAATACCCAACACAG  
 TGTATCCTGCCAAGGACAGTGGCCAGCTCCAGTGACCAACAGCCAGATATTAAGAACCCTCAAGCTCAC  
 TAAGGATACCAAAACCACAGGGAGTCCCTCAAGAAAAACAATTACAATTACTGTGAAGTCTGTCACTTCT  
 GATACCATTATCTCTTGGAAACTTGCTCTACCTATGACTGCTTTGAGACTCAGCTGGCTTAAACTGG  
 GCCATAGCCCGCATTGGATCTATAACAGAAACAATTGTAACAGGGGACCGCAGTGAGTACTTGGTCAC  
 AGCCCTGGAGCCTGATTCACCCTATAAAGTATGCATGGTCCCATGGAAACCAGCAACCTCTACCTATTT  
 GATGAACTCCTGTTTGTATTGAGACTGAACTGCACCCCTTGAATGTACAACCCTACAACCACCTCA  
 ATCGAGAGCAAGAGAAAGAACCTTACAAAAACCCCAATTTACCTTTGGCTGCCATCATTGGTGGGGCTGT  
 GGCCCTGGTTACCATTGCCCTTCTGCTTATAGTGTGTTGGTATGTTTATAGGAATGGATCGCTCTTCTCA  
 AGGAACCTGTGCATATAGCAAAGGGAGGAGAAGAAAGGATGACTATGCAGAAGCTGCCACTAGAAGGACA  
 ACTCTATCCTGGAAATCAGGGAACTTCTTTTCAGATGTTACCAATAAGCAATGAACCCATCTCGAAGGA  
 GGAGTTTGTAAATACACACCATATTTCTCCTAATGGAATGAATCTGTACAAAAACAATCACAGTGAAGG  
 AGTAGTAACCGAAGCTACAGAGACAGTGGTATTCAGACTCAGATCACTCACACTCA

**ACGCGT**ACGCGGCCGCTCGAG – GFP Tag – GTTTAA

**Protein Sequence:**

>RG212959 representing NM\_013281  
 Red=Cloning site Green=Tags(s)

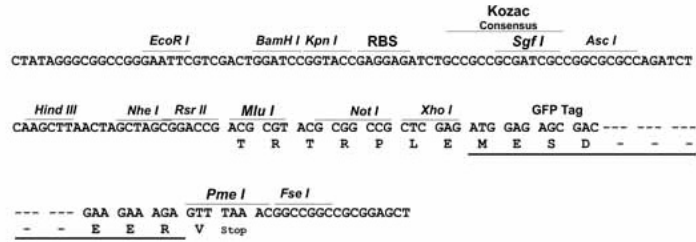
MISAAWSIFLIGTKIGLFLQVAPLSVMAKSCPSVCRCDAGFIYCNDRFLTSIPTGIPEDATLLYLQNNQI  
 NNAGIPSDLKNLLKVERIYLYHNSLDEFPTNLPKYVKELHLQENNIRTITYDSLKIPYLEELHLLDNSV  
 SAVSIEEGAFRDSNYLRLLFLSRNHLSTIPWGLPRTIEELRLDDNRISTISSPSLQGLTSLKRLVLDGNL  
 LNNHGLGDKVFFNLVNLTELSLVRNSLTAAPVNLPGTNLRKLYLQDNHINRVPPNAFSYLRQLYRLDMSN  
 NNLNLPQGI FDDL DNI TQL ILRNRPWYCGCKMKWVRDWLQSLPVKVNVRGLMCQAPEKVRGMAIKDLNA  
 ELFDCKDSGIVSTIQITTAIPNTVYPAQGWPAVTKQPDIKNPKLTKDHQTTGSPSRKTIITITVKSPTS  
 DTIHISWKLALPMTALRLSWLKLGHSPAFGSITETIVTGDREYLVTALEPDSYKVCMPMETSNLVLF  
 DETPVCIEETETAPLRMYNPTTTLNREQEKEPYKNPNLPLAAIIGGAVALVTIALLALVCVYVHRNGSLFS  
 RNCAYSKGRRRKDDYAEAGTKKDNSILEIRETSFQMLPISNEPISKEEFVIHTIFPPNGMNLKNNHSES  
 SSNRSYRDSGIPDSHSHS

**TRTRPLE** – GFP Tag – V

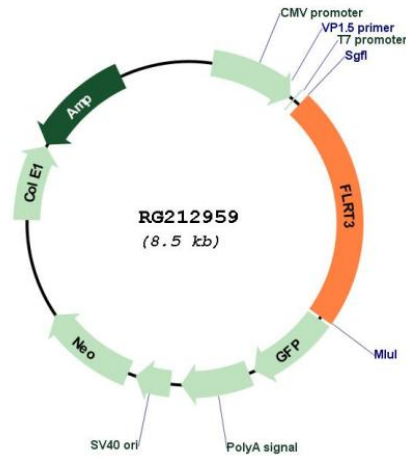
Restriction Sites: SgfI-MluI

Cloning Scheme:

Cloning sites used for ORF Shutting:



Plasmid Map:



ACCN: NM\_013281

ORF Size: 1947 bp

<b>OTI Disclaimer:</b>	The molecular sequence of this clone aligns with the gene accession number as a point of reference only. However, individual transcript sequences of the same gene can differ through naturally occurring variations (e.g. polymorphisms), each with its own valid existence. This clone is substantially in agreement with the reference, but a complete review of all prevailing variants is recommended prior to use. <a href="#">More info</a>
<b>OTI Annotation:</b>	This clone was engineered to express the complete ORF with an expression tag. Expression varies depending on the nature of the gene.
<b>Components:</b>	The ORF clone is ion-exchange column purified and shipped in a 2D barcoded Matrix tube containing 10ug of transfection-ready, dried plasmid DNA (reconstitute with 100 ul of water).
<b>Reconstitution Method:</b>	<ol style="list-style-type: none"> <li>1. Centrifuge at 5,000xg for 5min.</li> <li>2. Carefully open the tube and add 100ul of sterile water to dissolve the DNA.</li> <li>3. Close the tube and incubate for 10 minutes at room temperature.</li> <li>4. Briefly vortex the tube and then do a quick spin (less than 5000xg) to concentrate the liquid at the bottom.</li> <li>5. Store the suspended plasmid at -20°C. The DNA is stable for at least one year from date of shipping when stored at -20°C.</li> </ol>
<b>RefSeq:</b>	<a href="#">NM_013281.3</a>
<b>RefSeq Size:</b>	3773 bp
<b>RefSeq ORF:</b>	1950 bp
<b>Locus ID:</b>	23767
<b>UniProt ID:</b>	<a href="#">Q9NZU0</a>
<b>Cytogenetics:</b>	20p12.1
<b>Domains:</b>	LRRNT, LRRCT, LRR, LRR_TYP, FN3
<b>Protein Families:</b>	Druggable Genome, Transmembrane
<b>Gene Summary:</b>	This gene encodes a member of the fibronectin leucine rich transmembrane protein (FLRT) family. FLRTs may function in cell adhesion and/or receptor signalling. Their protein structures resemble small leucine-rich proteoglycans found in the extracellular matrix. This gene is expressed in many tissues. Two alternatively spliced transcript variants encoding the same protein have been described for this gene. [provided by RefSeq, Jul 2010]