

Product datasheet for **RG212954**

SCML1 (NM_001037540) Human Tagged ORF Clone

Product data:

Product Type:	Expression Plasmids
Product Name:	SCML1 (NM_001037540) Human Tagged ORF Clone
Tag:	TurboGFP
Symbol:	SCML1
Mammalian Cell Selection:	Neomycin
Vector:	pCMV6-AC-GFP (PS100010)
E. coli Selection:	Ampicillin (100 ug/mL)
ORF Nucleotide Sequence:	>RG212954 representing NM_001037540 Red=Cloning site Blue=ORF Green=Tags(s)

TTTTGTAATACGACTCACTATAGGGCGGCCGGAATTCGTCGACTGGATCCGGTACCGAGGAGATCTGCC
GCC**CGATCGCC**

ATGATGTCTAACAGCTCCAGTGAAATCGATGTGATAAAAAACAAGAATACCTACTTACGATGAAGATGACA
ACACTATTCTTTATGCGTATGAAACAAAACCTGAATTTGTCAATAAAGAACCGAATATTGTATCTGACGC
ATCCTGTAATACTGAAGAGCAACTGAAGACAGTTGATGATGTCTTATTCATTGCCAGGTTATATATGAT
GCTCTGCAAAACCTGGATAAGAAGATTGATGTATTTCGTAGAAAGTTTCAAAAATCCAACGTTTCCATG
CGAGATCCCTGTGGACAAATCATAAGCGATATGGATATAAAAAGCATTCTTACCGGTTGTTAAAAAGCT
TAAACTCCAGAAAATGAAGAAAAATGAGGTTTACGAGACATTCTCTACCCTGAAAGTTACAGCCCACT
TTACCAGTGTCAAGGCGTGAGAATAATCCCGAGCAACCTTCCAAGCCATCCTTTTGCATGGAAGAAT
ACCAGCGAGCTGAGCTGGAGGAGGACCCGATCCTCAGCCGCACTCCGAGTCCAGTGCATCCCTCAGATTT
CTCTGAGCATAATTGTCAGCCGATTATGCATCTGATGGTGAACGTATGGTTCTTCTCAGGGCTCTGC
CTTGGCAACCCTCGGGCTGACAGCATCCACAACACTTACTCAACTGACCATGCTTCTGCAGCACCACCTT
CAGTTACAAGGTCACCAGTTGAAAATGACGGTTACATAGAGGAAGGAAGCATCACTAAGCACCTTCAAC
CTGGTCGGTGAAGCAGTGGTCTATTTCTAAAACAACAGATCCTCTTGCAATTATGCCCTTTGTGCGAC
CTTTTCAAGCCATGAAATTGACGGGAAGGCTCTGCTCTACTCAGAGTGACGTGTTGTGAAGCACT
TGGGGTGAAGCTGGGAACGGCTGTGAAGCTATGCTACTACATTGACCGACTTAAACAAGGAAAATGCTT
TGAAAAT

ACGCGTACGCGGCCGCTCGAG - GFP Tag - GTTTAA



[View online »](#)

Protein Sequence: >RG212954 representing NM_001037540
 Red=Cloning site Green=Tags(s)

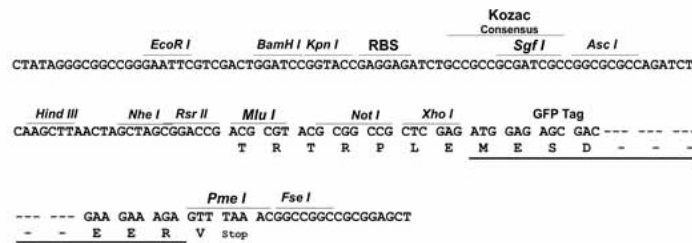
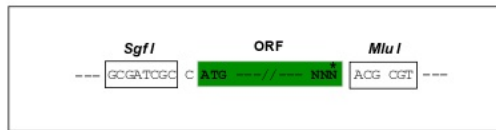
MMSNSSEIDVIKTRIPYDEDDNTILYAYETKPEFVNKEPNIVSDASCNTEEQLKTVDDVLIHCQVIYD
 ALQNLDDKIDVIRRKVSKIQRFHARSLWLNHKRYGKHSYRLVKKLKQMKKNEVYETFSYPEYSPT
 LPVSRRENNSPNLPRPSFCMEYQRALEEDPILSRTPSPVHPSDFSEHNCQPYASDGATYGSSSLC
 LGNPRADSIHNTYSTDHASAAPPSVTRSPVENDGYIEEGSITKHPSTWSVEAVVLFKQTDPLALCPLVD
 LFRSHEIDGKALLLLTSDVLLKHLGVKLGTAVKLCYYIDRLKQGKCFEN

TRTRPLE - GFP Tag - V

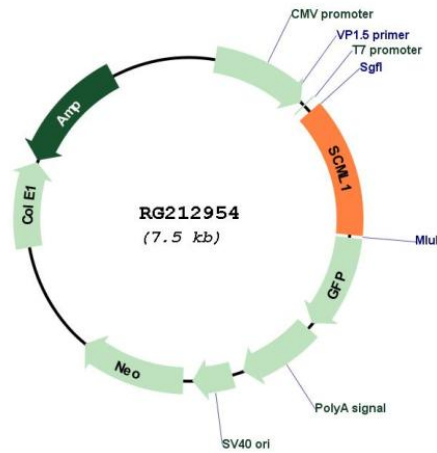
Restriction Sites: SgfI-MluI

Cloning Scheme:

Cloning sites used for ORF Shutting:



Plasmid Map:



ACCN: NM_001037540

ORF Size: 987 bp

OTI Disclaimer:	<p>Due to the inherent nature of this plasmid, standard methods to replicate additional amounts of DNA in E. coli are highly likely to result in mutations and/or rearrangements. Therefore, OriGene does not guarantee the capability to replicate this plasmid DNA. Additional amounts of DNA can be purchased from OriGene with batch-specific, full-sequence verification at a reduced cost. Please contact our customer care team at custsupport@origene.com or by calling 301.340.3188 option 3 for pricing and delivery.</p> <p>The molecular sequence of this clone aligns with the gene accession number as a point of reference only. However, individual transcript sequences of the same gene can differ through naturally occurring variations (e.g. polymorphisms), each with its own valid existence. This clone is substantially in agreement with the reference, but a complete review of all prevailing variants is recommended prior to use. More info</p>
OTI Annotation:	This clone was engineered to express the complete ORF with an expression tag. Expression varies depending on the nature of the gene.
Components:	The ORF clone is ion-exchange column purified and shipped in a 2D barcoded Matrix tube containing 10ug of transfection-ready, dried plasmid DNA (reconstitute with 100 ul of water).
Reconstitution Method:	<ol style="list-style-type: none"> 1. Centrifuge at 5,000xg for 5min. 2. Carefully open the tube and add 100ul of sterile water to dissolve the DNA. 3. Close the tube and incubate for 10 minutes at room temperature. 4. Briefly vortex the tube and then do a quick spin (less than 5000xg) to concentrate the liquid at the bottom. 5. Store the suspended plasmid at -20°C. The DNA is stable for at least one year from date of shipping when stored at -20°C.
RefSeq:	NM_001037540.3
RefSeq Size:	2923 bp
RefSeq ORF:	990 bp
Locus ID:	6322
UniProt ID:	Q9UN30
Cytogenetics:	Xp22.13
Protein Families:	Transcription Factors
Gene Summary:	Putative Polycomb group (PcG) protein. PcG proteins act by forming multiprotein complexes, which are required to maintain the transcriptionally repressive state of homeotic genes throughout development. May be involved in spermatogenesis during sexual maturation (By similarity).[UniProtKB/Swiss-Prot Function]