

Product datasheet for **RG212948**

SLC6A19 (NM_001003841) Human Tagged ORF Clone

Product data:

Product Type:	Expression Plasmids
Product Name:	SLC6A19 (NM_001003841) Human Tagged ORF Clone
Tag:	TurboGFP
Symbol:	SLC6A19
Synonyms:	B0AT1; HND
Mammalian Cell Selection:	Neomycin
Vector:	pCMV6-AC-GFP (PS100010)
E. coli Selection:	Ampicillin (100 ug/mL)



[View online »](#)

ORF Nucleotide Sequence:

>RG212948 representing NM_001003841
 Red=Cloning site Blue=ORF Green=Tags(s)

TTTTGTAATACGACTCACTATAGGGCGGCCGGAATTCGTCGACTGGATCCGGTACCGAGGAGATCTGCC
 GCC**CGGATCGCC**

ATGGTGAGGCTCGTGCTGCCAACCCCGCCTAGACGCCGGATCCCGTCCCTGGCTGAGCTGGAGACCA
 TCGAGCAGGAGGAGGCCAGCTCCCGGCCGAAGTGGGACAACAAGGCGCAGTACATGCTCACCTGCCTGGG
 CTTCTGCGTGGGCTCGGCAACGTGTGGCGCTTCCCTACCTGTGTGAGGCCACGGAGGAGGAGCCTTC
 ATGATCCCGTTCTCATCTGCTGGTCTGGAGGGCATCCCCCTGCTGTACCTGGAGTTCGCCATCGGGC
 AGCGGCTCGCGCGGGCAGCCTGGGTGTGTGGAGCTCCATCCACCCGGCCCTGAAGGGCCTAGGCCCTGGC
 CTCCATGCTCACGTCCTTATGGTGGGACTGTATTACAACACCATCATCTCCTGGATCATGTGGTACTTA
 TTCAACTCCTCCAGGAGCCTCTGCCCTGGAGCGACTGCCCGCTCAACGAGAACCAGACAGGGTATGTGG
 ACGAGTGCAGGAGCTCCCTGTGGACTACTTCTGGTACCGAGAGACGCTCAACATCTCCACGTCAT
 CAGCGACTCGGGCTCCATCCAGTGGTGGATGCTGCTGTGCTGGCCTGGCATGGAGCGTCTGTACATG
 TGACCATCCCGGCATCGAGACCACGGGAAGGCCGTACATCACCTCCACGCTGCCCTATGTGCTCC
 TGACCATCTTCTCATCCGAGGCCTGACGCTGAAGGGCGCCACCAATGGCATCGTCTTCTTCTTACGCC
 CAACGTCACGGAGCTGGCCAGCCGGACACCTGGCTGGACGCGGGCGCACAGGTCTTCTTCTTCTTCTCC
 CTGGCCTTCGGGGCCTCATCTCCTTCTCCAGTACAACCTGTGCACAACAACCTGCGAGAAGGACTCGG
 TGATTGTGTCCATCATCAACGGCTTACATCGGTGTATGTGGCCATCGTGGTCTACTCCGTCATTGGGTT
 CCGCGCCACGCAGCGCTACGACGACTGCTTCAGCACGAACATCCTGACCCTCATCAACGGGTTCCACCTG
 CCTAAGGCAACGTGACCCAGGAGAACTTTGTGGACATGCAGCAGCGGTGCAACGCCTCCGACCCCGCG
 CCTAGCGCAGCTGGTGTCCAGACCTGCGACATCAACGCCTTCTCTCAGAGGCCGTGGAGGGCACAGG
 CCTGGCCTTTCATCGTCTTACCGAGGCCATCACCAAGATGCCGTTGTCCCACTGTGGTCTGTGCTCTTC
 TTCATTATGCTCTTCTGCTGGGCTGTATCTATGTTTGGGAACATGGAGGGCGTGGTGTGCCCTGC
 AGGACCTCAGAGTCATCCCCCGAAGTGGCCAAAGGAGGTGCTCACAGGCCTCATCTGCCTGGGACATT
 CCTCATTGGCTTTCATCTTACGCTGAACCCGGCCAGTACTGGCTCTCCCTGCTGGACAGCTATGCCGGC
 TCCATTCCCTGCTCATCATCGCCTTCTGCGAGATGTTCTCTGTGGTCTACGTGTACGGTGTGGACAGGT
 TCAATAAGGACATCGAGTTCATGATCGGCCACAAGCCCAACATCTTGGCAAGTACGTGGCGCGTGGT
 CAGCCCCCTGCTCATGCTGATCATCTTCTCTTCTTCTCGTGGTAGAGGTACGTAGGAGCTGACCTAC
 AGCATCTGGGACCCTGGCTACGAGGAATTTCCAAATCCAGAAGATCTCTACCGAAGTGGGTGTATG
 TGGTGGTGGTGTATGTGGCTGGAGTGCCCTCCCTACCATCCCTGGCTATGCCATCTACAAGCTCATCAG
 GAACCACTGCCAGAAGCCAGGGGACCATCAGGGGCTGGTGGACACTGTCCACAGCCTCCATGAACGGG
 GACCTGAAGTAC

ACGCGTACGCGGCCGCTCGAG – GFP Tag – GTTTAA

Protein Sequence:

>RG212948 representing NM_001003841
 Red=Cloning site Green=Tags(s)

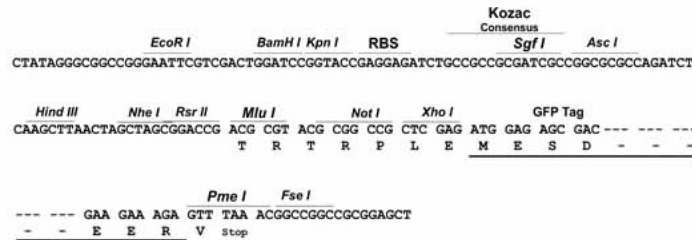
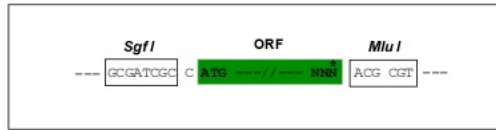
MVRLVLPNPLDARIPSLAELETIEQEEASSRPKWDNKAQYMLTCLGFCVGLGNVWRFYPLCQSHGGGAF
 MIPFLILLVLEGIPLLYLEFAIGQLRRGSLGVWSSIHPALKGLGLASMLTSFMVGLYYNTIISWIMWYL
 FNSFQEPLPWSDCPLNENQTYVDECARSSPVDYFWYRETLNISTISDSGSIQWMLLCLACAWSVLYM
 CTIRGIETTGKAVYITSTLPYVLTIFLIRGLTLKATNGIVFLFTPNVTELAQPDWLDAGAQQVFFSFS
 LAFGGLLISFSSYNSVHNNCEKDSVIVSIINGFTSVYVAIVVYVSVIGFRATQRYDDCFSTNLTLLINGFDL
 PEGNVTQENFVDMQQRNASDPAAYAQLVFQTCIDINAFLEAVEGTGLAFIVFTEAITKMPLSPLWSVLF
 FIMLFCLGLSSMFGNMEGVVPLQDLRVIPPKWPKEVLTGLICLGTFLIGFIFTLNSGQYWLSLLDSYAG
 SIPLLLIIAFCEMFSVYVYGVDRFNKDIEMFIGHKPNIFWQVTRVVSPLMLLIIFLFFFVVEVSQELTY
 SIWDPGYEEFPKSQKISYPNWWYVVVVIVAGVPSLTIPGYAIYKLIERNHCQKPGDHDQGLVSTLSTASMNG
 DLKY

TRTRPLE – GFP Tag – V

Restriction Sites: Sgfl-MluI

Cloning Scheme:

Cloning sites used for ORF Shutting:



ACCN: NM_001003841

ORF Size: 1902 bp

OTI Disclaimer: Due to the inherent nature of this plasmid, standard methods to replicate additional amounts of DNA in E. coli are highly likely to result in mutations and/or rearrangements. Therefore, OriGene does not guarantee the capability to replicate this plasmid DNA. Additional amounts of DNA can be purchased from OriGene with batch-specific, full-sequence verification at a reduced cost. Please contact our customer care team at custsupport@origene.com or by calling 301.340.3188 option 3 for pricing and delivery.

The molecular sequence of this clone aligns with the gene accession number as a point of reference only. However, individual transcript sequences of the same gene can differ through naturally occurring variations (e.g. polymorphisms), each with its own valid existence. This clone is substantially in agreement with the reference, but a complete review of all prevailing variants is recommended prior to use. [More info](#)

OTI Annotation: This clone was engineered to express the complete ORF with an expression tag. Expression varies depending on the nature of the gene.

Components: The ORF clone is ion-exchange column purified and shipped in a 2D barcoded Matrix tube containing 10ug of transfection-ready, dried plasmid DNA (reconstitute with 100 ul of water).

Reconstitution Method:

1. Centrifuge at 5,000xg for 5min.
2. Carefully open the tube and add 100ul of sterile water to dissolve the DNA.
3. Close the tube and incubate for 10 minutes at room temperature.
4. Briefly vortex the tube and then do a quick spin (less than 5000xg) to concentrate the liquid at the bottom.
5. Store the suspended plasmid at -20°C. The DNA is stable for at least one year from date of shipping when stored at -20°C.

RefSeq: [NM_001003841.1](#), [NP_001003841.1](#)

RefSeq Size: 1905 bp

RefSeq ORF: 1905 bp

Locus ID: 340024

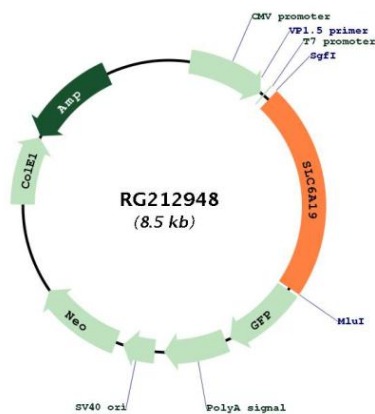
UniProt ID: [Q695T7](#)

Cytogenetics: 5p15.33

Protein Families: Druggable Genome, Transmembrane

Gene Summary: This gene encodes a system B(0) transmembrane protein that actively transports most neutral amino acids across the apical membrane of epithelial cells. Mutations in this gene may result in Hartnup disorder, an inherited disease with symptoms such as pellagra, cerebellar ataxia, and psychosis. The expression and function of B0AT1 (SLC6A19) in intestinal cells depends on the presence of the accessory protein angiotensin-converting enzyme 2 (ACE2) which, among other functions, acts as a chaperone for membrane trafficking of B0AT1. The ACE2 is also the cellular receptor for severe acute respiratory syndrome-coronavirus (SARS-CoV) and for SARS-CoV-2 that is causing the coronavirus 2019 (COVID-19) pandemic [provided by RefSeq, Jul 2020]

Product images:



Circular map for RG212948