

Product datasheet for **RG212946**

ILDR2 (NM_199351) Human Tagged ORF Clone

Product data:

Product Type:	Expression Plasmids
Product Name:	ILDR2 (NM_199351) Human Tagged ORF Clone
Tag:	TurboGFP
Symbol:	ILDR2
Synonyms:	C1orf32; dj782G3.1
Mammalian Cell Selection:	Neomycin
Vector:	pCMV6-AC-GFP (PS100010)
E. coli Selection:	Ampicillin (100 ug/mL)



[View online »](#)

ORF Nucleotide Sequence:

>RG212946 representing NM_199351
 Red=Cloning site Blue=ORF Green=Tags(s)

TTTTGTAATACGACTCACTATAGGGCGGCCGGGAATTCGTCGACTGGATCCGGTACCGAGGAGATCTGCC
 GCC**CGGATCGCC**

ATGGATAGGGTCTTGCTGAGGTGGATTTCTCTTCTGGCTAACAGCCATGGTCAAGGCCCTTCAGGTCA
 CAGTGCCCGACAAGAAGAAGGTGGCCATGCTCTCCAGCCCACTGTGCTTCGCTGCCACTTCTCAACATC
 CTTCCCATCAGCCTGCAGTTGTGCAAGTTCAAGTCTACTGCCAGGATCGCATGGGAGAATCCTTG
 GGCATGTCCTCTACCCGGGCCAATCTCTCAGCAAGAGAAACCTGGAATGGGACCCCTACTTGGATTGTT
 TGGACAGCAGGAGGACTGTTGAGTAGTAGCTTCAAACAGGGCTCGACTGTACCCTGGGAGATTCTA
 CAGGGGCAGAGAGATCACGATTGTTGATGATGCAGATCTCAAATGGAAAGCTTATGTGGGAGACAGC
 GGACTCTATTACTGTATTATCACACCCAGATGACCTGGAGGGGAAAAATGAGGACTCAGTGGAACTGC
 TGGTGTGGGCAGGACAGGGCTGCTTGGTATCTTCCAGTCTTGGTGTGGAGATTATGCCAGAGTG
 GGTGTTTGTGGCTGGTCTCTGGGCTCTTCTCTTCTCGTCTGGTGGGATCTGCTGGTCCAG
 TGCTGCCCTCACAGCTGCTGCTATGTCGCTGCCATGCTGCCAGATTCTGCTGCTGCCCTCAAG
 CCTGTATGAAGCAGGAAAGCAGCAAAGGCCGGTACCCTCCCTCTGTCTCCGGTGTCCCGGCCCTTA
 CTCCATCCCTCTGTCCCTTTGGGAGGAGCCCTCATCTGGCATGCTGATGGACAAGCCGCATCCACCT
 CCCTTGGCACCAAGTACTCCACTGGAGGAAGCCACAGTGTTCGCAAAGTTACCGGATCCAGGCTGACA
 AAGAGAGAGACTCCATGAAGTCTGTACTATGTTGAGAAGGAGCTGGCTCAGTTTATCCAGCCAGAAG
 GATGAGAGGCAGATATAACAACACCATCTCAGAAGTCCCTACATGAGGAGGACAGCAATTTCCGC
 CAGTCTTTCCATCAGATGAGAAGCAAGCAGTCCCTGTGTCTGGGACTTGGAGAGCAATCTGACTATT
 GGTCAAGTGTCAATGGGAGCAGCAGTGGGCAAGCCCGGCCCTCAGCCATGGAGTATAACAAGAGGA
 TCGAGAGAGCTTACGGCACAGCCAGCCGCTCCAAGTCGGAGATGCTGTCCGGAAGAATTCGCCACG
 GGGGTGCCGCGCTTTCATGGACGAGCTGGCGCCTTCGCTGACTCCTACGGCCAGCGCCCGCCGGG
 CAGACGGCAACAGTACGAGGCGCGGGCGGGAGCCGCTTCGAGCGCTCGGAGTCGCGGGCGCACAGCGG
 CTTCTACCAGGACGACTCCTTGGAGGAGTACTACGGTCAGCGCAGCCGACGCCGAGCCCTGACCGAT
 GCTGACCGCGGCTGGGCTTTCAGCCCGCGCGCCAGACCCGCCGAGGACGCGCACCTGCCCGGCTGG
 TGAGCCGACGCCAGGCACCGCAACAAACGACCACTCGTACCTGGGAGCGCGGGAGCGCCAGGC
 GCGGCCGAGGGCGCCAGCCGCGTGGCAGCCTGGAGACGCCATCAAGCGGAGCGCGCAGCTCGGCCCG
 CGCAGCGCTCTACTACGCTTGGTCCCGCCCGCACCTACAAGCCGCTCGTCGAGGACGACAGG
 AGGACCGCTCCGACGACGCTGCCGCCCTACAGCGAGCTGGAGCTGACCGCGGCCCTCTACCGCGG
 CCGGACCTGCCCTACCACAGCAACTCGGAGAAGAAGAGGAAAAAGGAGCCCGCAAGAAAAACCAATGAC
 TTTCAACCAGGATGTCCCTTGTGGTC

AG**CGGACCG**ACGCGTACGCGGCCGCTCGAG – GFP Tag – GTTTAA

Protein Sequence:

>RG212946 representing NM_199351
 Red=Cloning site Green=Tags(s)

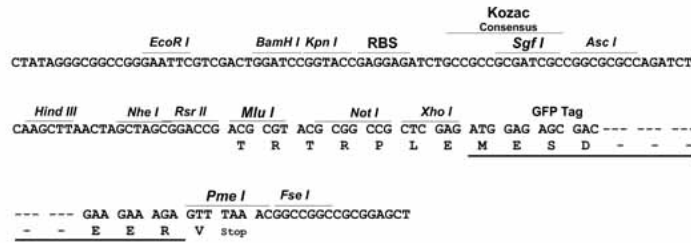
MDRVLRLRWISLFWLTAMVEGLQVTPDKKKVAMLFQPTVLRCHFSTSSHQPAVVQWKFKSYCQDRMGESL
 GMSSTRAQSLSKRNLEWDPYLDCLDSRRTVRRVASKQGSTVTLGDFYRGREITIVHDADLQIGKLMWGDS
 GLYYCIIITPDDLEGKNEDSVLLVLRGTLADLLPSFAVEIMPEWVFLVLLGVFLFFVLVVICWCQ
 CCPHSCCYVRCPCPDSCCPQALYEAGKAAKAGYPPSVSGVPGPYSIPVPLGGAPSSGMLMDKPHPP
 PLAPSDSTGGSHSVRKGYRIQADKERDSMKVLYYVEKELAQFDPARRMRGRYNNITISELSSLHEEDSNFR
 QSFHQMRKQFPVSGDLESNPDYWSGVMGSSGASRGPSAMEYNKEDRESFRHSQPRSKSEMLSRKNFAT
 GVPAVSMDELAFAFADSYQRRPRADGNSHEARGSRFERSESAHSGFYQDLSLEEYQQRSRREPLTD
 ADRGWAFSPARRRPAEDAHLPRLYSRTPGTAPKYDHSYLSARERQARPEGASRGSLETSPKRSQAQLGP
 RSASYAWSPPGTYKAGSSQDDQEDASDDALPPYSELELTRGPSYRGRDLPYHSNSEKRRKKEPAKKTND
 FPTRMSLVV

SGP**TRRRLE** – GFP Tag – V

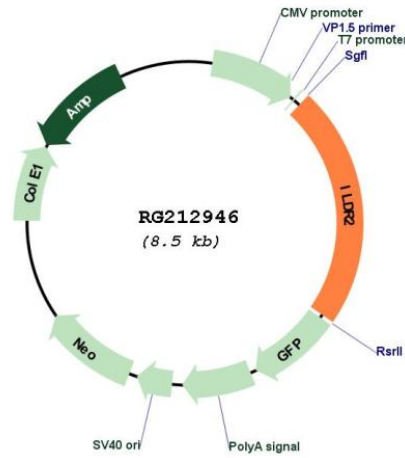
Restriction Sites: SgfI-RsrII

Cloning Scheme:

Cloning sites used for ORF Shuttling:



Plasmid Map:



ACCN: NM_199351

ORF Size: 1917 bp

OTI Disclaimer:	The molecular sequence of this clone aligns with the gene accession number as a point of reference only. However, individual transcript sequences of the same gene can differ through naturally occurring variations (e.g. polymorphisms), each with its own valid existence. This clone is substantially in agreement with the reference, but a complete review of all prevailing variants is recommended prior to use. More info
OTI Annotation:	This clone was engineered to express the complete ORF with an expression tag. Expression varies depending on the nature of the gene.
Components:	The ORF clone is ion-exchange column purified and shipped in a 2D barcoded Matrix tube containing 10ug of transfection-ready, dried plasmid DNA (reconstitute with 100 ul of water).
Reconstitution Method:	<ol style="list-style-type: none"> 1. Centrifuge at 5,000xg for 5min. 2. Carefully open the tube and add 100ul of sterile water to dissolve the DNA. 3. Close the tube and incubate for 10 minutes at room temperature. 4. Briefly vortex the tube and then do a quick spin (less than 5000xg) to concentrate the liquid at the bottom. 5. Store the suspended plasmid at -20°C. The DNA is stable for at least one year from date of shipping when stored at -20°C.
RefSeq:	NM_199351.3
RefSeq Size:	2572 bp
RefSeq ORF:	1920 bp
Locus ID:	387597
UniProt ID:	Q71H61
Cytogenetics:	1q24.1
Protein Families:	Transmembrane
Gene Summary:	May be involved in lipid homeostasis and ER stress pathways.[UniProtKB/Swiss-Prot Function]