

Product datasheet for **RG212917**

OPA1 (NM_130835) Human Tagged ORF Clone

Product data:

Product Type:	Expression Plasmids
Product Name:	OPA1 (NM_130835) Human Tagged ORF Clone
Tag:	TurboGFP
Symbol:	OPA1
Synonyms:	BERHS; largeG; MGM1; MTDPS14; NPG; NTG
Mammalian Cell Selection:	Neomycin
Vector:	pCMV6-AC-GFP (PS100010)
E. coli Selection:	Ampicillin (100 ug/mL)



[View online »](#)

ORF Nucleotide Sequence:

>RG212917 representing NM_130835
 Red=Cloning site Blue=ORF Green=Tags(s)

TTTTGTAATACGACTCACTATAGGGCGGCCGGAATTCGTGACTGGATCCGGTACCGAGGAGATCTGCC
 GCC**CGGATCGCC**

ATGTGGCGACTACGTGCGGCCGCTGTGGCCTGTGAGTCTGCCAGTCTTTAGTGAACACAGCTCTGGAA
 TAAAAGGAAGTTTACCACTACAAAACTACATCTGGTTTACGAAGCATTATCATTACATCATCTAC
 CTTAAAGCTTCAACGACCCCAATTAAGGACATCCTTTCAGCAGTTCTCTCTCTGACAAAACCTTCTTTA
 CGTAAACTGAAATTCTCTCCAATTAATATGGCTACCAGCCTCGCAGGAATTTTGGCCAGCAAGATTAG
 CTACGAGACTCTTAAACTTCGCTATCTCATACTAGGATCGGCTGTTGGGGTGGCTACACAGCCAAAA
 GACTTTTGATCAGTGGAAAGATATGATACCGGACCTTAGTGAATATAAATGGATTGTGCCTGACATTGTG
 TGGGAAATTGATGAGTATATCGATTTTGGTCACAAATTGGTTAGTGAAGTCATAGGAGCTTCTGACCTAC
 TTCTCTGTTAGGTTCTCGGAAGAAACGGCGTTAGAGCAACAGATCGTGGATCTGAAAGTGACAAGCA
 TTTTAGAAAGGGTCTGCTTGGTGGTCTCATTCTTTACAACAACAAATTCAGAGCATGAAGAGGAAGCG
 CGCAGAGCCGCTGGCCAATATAGCACGAGCTATGCCCAACAGAAGCGCAAGGTGTGACACAAAGAGAAAA
 TTGACCAACTTCAGGAAGAACTTCTGCACACTCAGTTGAAGTATCAGAGAATCTTGAACGATTAGAAAA
 GGAGAACAAGAAATTGAGAAAATTAGTATTGCAGAAAGATGACAAAGGCATTATCATAGAAAGCTTAAG
 AAATCTTTGATTGACATGATTCTGAAGTTCTTGATGTTCTCTGATTATGATGCCAGTTATAATACGC
 AAGATCATCTGCCACGGGTTGTTGTGGTGGAGATCAGAGTGTGGAAAGACTAGTGTGTTGAAATGAT
 TGCCCAAGCTCGAATATCCCAAGAGGATCTGGGAGATGATGACACGTTCTCCAGTTAAGGTGACTCTG
 AGTGAAGTCTCACCATGTGGCCCTATTTAAAGATAGTTCTCGGAGTTTGTACTTACCAAGAAAGAAG
 ATCTTGCAGCATTAAAGACATGAAATAGAACTTCGAATGAGGAAAAATGTGAAAGAAGGCTGTACCTTAG
 CCCTGAGACCATATCCTTAAATGTAAAAGGCCCTGGACTACAGAGGATGGTGTGTTGACTTACCAGGT
 GTGATTAATACTGTGACATCAGGATGGCTCCTGACACAAGGAAACTATTTTTCAGTATCAGCAAAGCTT
 ACATGCAGAATCCTAATGCCATCACTGTGATTCAAGATGGATCTGTGGATGTGAACGCAGTATTGT
 TACAGACTTGGTCAAGTCAATGGACCCTCATGGAAGGAGAACCATATTCGTTTTGACCAAGTAGACCTG
 GCAGAGAAAAATGAGCCAGTCCAAGCAGGATTCAGCAGATAATTGAAGGAAAGCTTCCCAATGAAAG
 CTTTAGGTTATTTGCTGTTGTAACAGGAAAAGGGAACAGCTCTGAAAGCATTGAAGCTATAAGAGAATA
 TGAAGAAGAGTTTTTTCAGAATCAAAGCTCCTAAAGACAAGCATGCTAAAGGCACACCAAGTGACTACA
 AGAAATTAAGCCTTGCAGTATCAGACTGCTTTTGGAAAATGGTACGAGAGTCTGTTGAACAACAGGCTG
 ATAGTTTCAAAGCAACAGTTTTAACCTTGAAACTGAATGGAAGAATAACTATCCTCGCCTGCGGGAAC
 TGACCGGAATGAACTATTTGAAAAGCTAAAAATGAAATCCTTGATGAAGTTATCAGTCTGAGCCAGGT
 ACACAAAACATTGGGAGGAAATCCTTCAACAATCTTTGTGGGAAAGAGTATCAACTCATGTGATTGAAA
 ACATCTACCTTCCAGTGCAGCAGACCATGAATTCAGGAACTTTTAACCCACAGTGGATATCAAGCTTAA
 ACAGTGGACTGATAAAACAACCTCCTAATAAAGCAGTAGAGGTTGCTTGGGAGACCCTACAAGAAGAAAT
 TCCCGCTTATGACAGAACCAGGAAAGGAAAGAGCATGATGACATATTTGATAAATTAAGAGGCCGTTA
 AGGAAGAAAGTATTAACGACACAAGTGAATGACTTTGCGGAGGACAGCTTGGGGTTATTCAACACAA
 TGCTTTGGAAGACCGATCCATATCTGATAAACAGCAATGGGATGCAGCTATTTATTTTATGGAAGAGGCT
 CTGCAGGCTCGTCTCAAGGATACTGAAAATGCAATTGAAAACATGGTGGTCCAGACTGGAAAAAGAGGT
 GGTATACTGGAAGAATCGGACCAAGAACAGTGTGTTCACAATGAAACCAAGAATGAATTGGAGAAGAT
 GTTGAATGTAATGAGGAGCACCCAGCTTATCTTGCAAGTGAATAAACCACAGTCCGGAAGAACCTT
 GAATCCCAGGAGTAGAAGTAGATCCAAGCTTGATTAAGGATACTTGGCATCAAGTTTATAGAAGACATT
 TTTTAAAAACAGCTCTAAACCATTGTAACCTTTGTCGAAGAGGTTTTTACTACCAAAGGCATTTTGT
 AGATTCTGAGTTGGAATGCAATGATGTGGTCTTGTGTTTGGCGTATACAGCGCATGCTTGTATCACCGCA
 AATACTTTAAGGCAACAACCTTACAATACTGAAGTTAGGCGATTAGAGAAAAATGTTAAAGAGGTATTGG
 AAGATTTTGTGAAGATGGTGAAGAAGATTAATTGCTTACTGGTAAACGCGTTCAACTGGCGGAAGA
 CCTCAAGAAAGTTAGAGAAATCAAGAAAACTTGATGCTTTCATTGAAGCTCTTCATCAGGAGAAA

AG**CGGACCG**ACGCGTACGCGGCCGCTCGAG - GFP Tag - GTTTAA

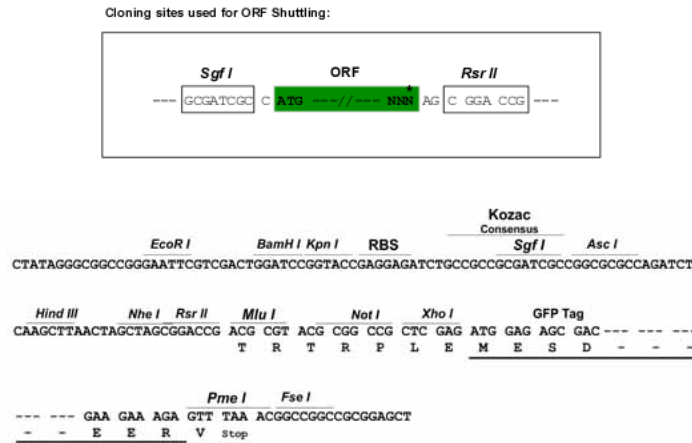
Protein Sequence: >RG212917 representing NM_130835
 Red=Cloning site Green=Tags(s)

MWRLRRAAVACEVCQSLVKHSSGIKGSPLQLKHLVSRSIYHSHHPTLKLQRPQLRTSFQQFSSLTNLPL
 RKLKFSPIKYGYQPRRNFWPARLATRLLKLRYLILGSVGGGYTAKKTFDQWKDMIPDLSEYKWIVPDIV
 WEIDEYIDFGHKLVEVIGASDLLLLLSPEETAFRATDRGSESDKHFRKGLLGELILLQQQIQEHEEEA
 RRAAGQYSTSYAQQRKVSDEKIDQLQEELLHTQLKYQRILERLEKENKELRKLVLQKDDKGIHHRKLL
 KSLIDMYSEVLDVLSDYDASYNTQDHLPRVVVVGQDSAGKTSVLEMIAQARIFPRGSGEMMTRSPVKVTL
 SEGPHHVALFKDSSREFDLTKEEDLAALRHEIELRMRKNVKEGCTVSPETISLNVKGPGLQRMVLDLPG
 VINTVTSGMADTKETIFSIKAYMNPNAIILCIQDGSVDAERSIVTDLVSQMDPHGRRRTIFVLTKVDL
 AEKNVASPSRIQQIIEGKLFPMKALGYFAVVTGKGNSSSEIEAIREYEEFFQNSKLLKTSMLKAHQVTT
 RNL SLAVSDCFWKMVRESVEQQADSFKATRFNLETEWKNNYPRLRELDNELFEKAKNEILDEVISLSQV
 TPKHWEEILQQSLWERSVTHVIENIYLPAAQTMNSGTFNTTVDIKLKQWTDKQLPNKAVEVAVETLQEEF
 SRFMTEPKGKEHDDIFDKLKEAVKEESIKRHKWNDFEAEDSLRVIQHNALEDRSISDKQQWDAAIYFMEEA
 LQARLKD TENAIENMVGPDWKKRWLYWKNRTQEQCVHNETKNELEKMLKCNEEHPAYLASDEITTVRKNL
 ESRGVEVDP SLIKD TWHQVYRRHFLKTALNHCNLCRRGFYYYQRHFV DSELECN DVVLFWR IQRMLAITA
 NTLRQQLTNTEVRRLEKNVKEVLEDF AEDGEKKIKLLTGKRVQLAEDLKKVREIQEKLDAFIEALHQEK

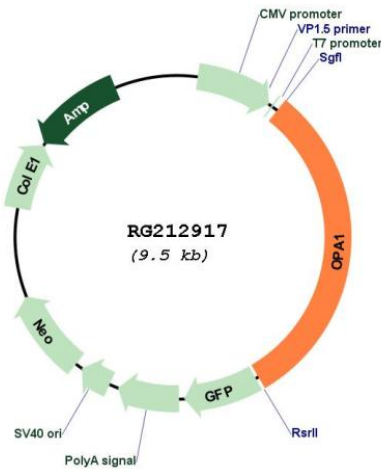
SGPTRRRLE - GFP Tag - V

Restriction Sites: SgfI-RsrII

Cloning Scheme:



Plasmid Map:



ACCN: NM_130835

ORF Size: 2937 bp

OTI Disclaimer: The molecular sequence of this clone aligns with the gene accession number as a point of reference only. However, individual transcript sequences of the same gene can differ through naturally occurring variations (e.g. polymorphisms), each with its own valid existence. This clone is substantially in agreement with the reference, but a complete review of all prevailing variants is recommended prior to use. [More info](#)

OTI Annotation: This clone was engineered to express the complete ORF with an expression tag. Expression varies depending on the nature of the gene.

Components: The ORF clone is ion-exchange column purified and shipped in a 2D barcoded Matrix tube containing 10ug of transfection-ready, dried plasmid DNA (reconstitute with 100 ul of water).

Reconstitution Method:

1. Centrifuge at 5,000xg for 5min.
2. Carefully open the tube and add 100ul of sterile water to dissolve the DNA.
3. Close the tube and incubate for 10 minutes at room temperature.
4. Briefly vortex the tube and then do a quick spin (less than 5000xg) to concentrate the liquid at the bottom.
5. Store the suspended plasmid at -20°C. The DNA is stable for at least one year from date of shipping when stored at -20°C.

RefSeq: [NM_130835.1](#), [NP_570848.1](#)

RefSeq Size: 5921 bp

RefSeq ORF: 2940 bp

Locus ID: 4976

Cytogenetics: 3q29

Gene Summary:

The protein encoded by this gene is a nuclear-encoded mitochondrial protein with similarity to dynamin-related GTPases. The encoded protein localizes to the inner mitochondrial membrane and helps regulate mitochondrial stability and energy output. This protein also sequesters cytochrome c. Mutations in this gene have been associated with optic atrophy type 1, which is a dominantly inherited optic neuropathy resulting in progressive loss of visual acuity, leading in many cases to legal blindness. [provided by RefSeq, Aug 2017]