

## Product datasheet for **RG212878**

### PTPN20B (PTPN20) (NM\_001042363) Human Tagged ORF Clone

#### Product data:

Product Type:	Expression Plasmids
Product Name:	PTPN20B (PTPN20) (NM_001042363) Human Tagged ORF Clone
Tag:	TurboGFP
Symbol:	PTPN20
Synonyms:	bA42B19.1; bA142I17.1; CT126; PTPN20A; PTPN20B
Mammalian Cell Selection:	Neomycin
Vector:	pCMV6-AC-GFP (PS100010)
E. coli Selection:	Ampicillin (100 ug/mL)
ORF Nucleotide Sequence:	>RG212878 representing NM_001042363 Red=Cloning site Blue=ORF Green=Tags(s)

TTTTGTAATACGACTCACTATAGGGCGGCCGGAATTCGTCGACTGGATCCGGTACCGAGGAGATCTGCC  
GCC**CGATCGCC**

ATGTGGACAGCCAGAGGCCCTTCAGAAGAGACAGGTGGAGCAGTGAGGATGAGGAGGCTGCAGGGCCAT  
CACAGGCTCTCTCCCTCTACTTTCTGATACGCGCAAAATTGTTTCTGAAGGAGAACTAGATCAGTTGGC  
TCAGATTCGGCCATTAATTCAATTTTCATGAGCAGACAGCCATCAAGGATTGTTTAAAAATCCTTGAG  
GAAAAACAGCAGCGTATGATATCATGCAGGAATTTATGGCTTTAGAACTTAAGAATCTGCCTGGTGA  
TCAACTCTGGGAATCAACCAAGCAACAGAGAAAAAATAGATACCGAGATATTCTCCATATGATTCAAC  
ACGCGTTCCTCTTGGAAAAAGCAAGGACTACATCAATGCTAGTTATATTAGAATAGTCAATTGTGGAGAA  
GAGTATTTTTATATCGCTACTCAAGGACCACTGCTGAGCACCATAGATGACTTTTGGCAAATGGTGTGG  
AAAATAATTCAAATGTTATTGCCATGATAACCAGAGAGATAGAAGGTGGAATTATCAAATGCTACCATTA  
CTGGCCCATTTCTCTGAAGAAGCCATTGGAATTGAAACACTTCCGTGATTCTGGGAACTACCAGATA  
CTTCAATATTTTCATCATTGCAATGTTTCAAGTTGTGGAGAAGTCCACGGAACTAGTCACTCTGTAAAC  
AGTTGCAGTTCACCAAGTGGCCAGACCATGGCACTCCTGCCTCAGCAGATAGCTTCATAAAATATATTCC  
TTATGAAGGAAGAGCCACCTTACAGGACCCATGGTTGTTCACTGCAGTGCCGGCATAGGCCGGACAGGG  
GTGTTCCATATGTGTGGATGTCGTGTTCTGTGCCATCGTAAAGAACTGTTCAATCAACATCATGGATATAG  
TGGCCAAATGAGAGAACAACGTTCTGGCATGGTTCAAACGAAGGAGCAGTATCACTTTTGTACGATAT  
TGTGCTTGAAGTTCTTCGAAACTTCTGACTTTGGAT

AG**CGGACCG**ACGCGTACGCGGCCGCTCGAG - GFP Tag - GTTTAA



[View online »](#)

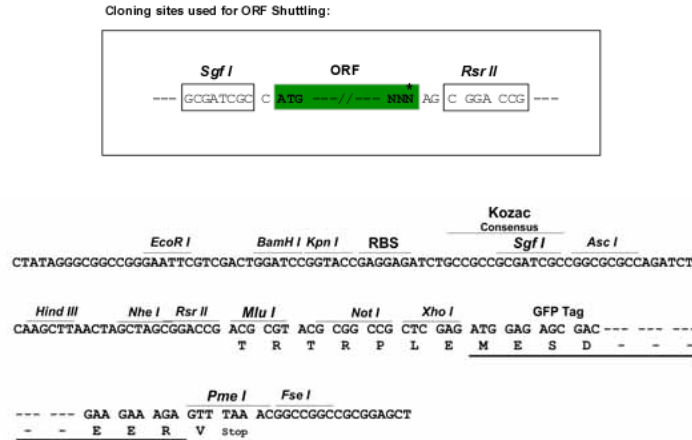
**Protein Sequence:** >RG212878 representing NM\_001042363  
 Red=Cloning site Green=Tags(s)

MWTARGPFRDRWSEDEEAAGPSQALSPLLSDTRKIVSEGELDQLAQIRPLIFNFHEQTAIKDCLKILE  
 EKTAAYDIMQEFMALELKNLPGEFNSGNQPSNREKNRYRDILPYDSTRVPLGKSKDYINASYIRIVNCGE  
 EYFYIATQGPLLSTIDDFWQMVLENNNSNVIAMITREIEGGIICKYHYWPI SLKKPLELKHFRVFL ENYQI  
 LQYFII RMFQVVEKSTGTSHSVKQLQFTKWPDHGTPASADSF IKYIRYARKSHL TGP MVVHCSAGIGRTG  
 VFLCVDVVFCAIVKNCSFNIMDIVAQMREQRSGMVQTK EQYHFCYDIVLEVLRKLLTLD

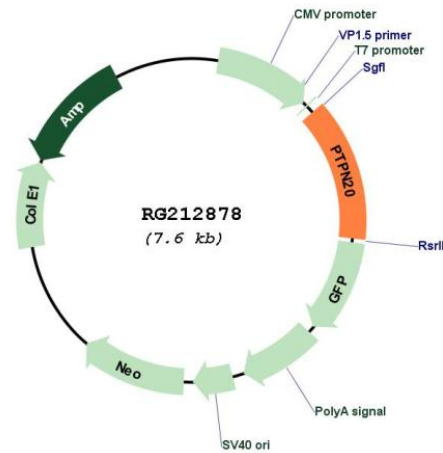
SGP TRTRRLE - GFP Tag - V

**Restriction Sites:** SgfI-RsrII

**Cloning Scheme:**



**Plasmid Map:**



**ACCN:** NM\_001042363

**ORF Size:** 1017 bp

<b>OTI Disclaimer:</b>	The molecular sequence of this clone aligns with the gene accession number as a point of reference only. However, individual transcript sequences of the same gene can differ through naturally occurring variations (e.g. polymorphisms), each with its own valid existence. This clone is substantially in agreement with the reference, but a complete review of all prevailing variants is recommended prior to use. <a href="#">More info</a>
<b>OTI Annotation:</b>	This clone was engineered to express the complete ORF with an expression tag. Expression varies depending on the nature of the gene.
<b>Components:</b>	The ORF clone is ion-exchange column purified and shipped in a 2D barcoded Matrix tube containing 10ug of transfection-ready, dried plasmid DNA (reconstitute with 100 ul of water).
<b>Reconstitution Method:</b>	<ol style="list-style-type: none"><li>1. Centrifuge at 5,000xg for 5min.</li><li>2. Carefully open the tube and add 100ul of sterile water to dissolve the DNA.</li><li>3. Close the tube and incubate for 10 minutes at room temperature.</li><li>4. Briefly vortex the tube and then do a quick spin (less than 5000xg) to concentrate the liquid at the bottom.</li><li>5. Store the suspended plasmid at -20°C. The DNA is stable for at least one year from date of shipping when stored at -20°C.</li></ol>
<b>RefSeq:</b>	<a href="#">NM_001042363.4</a> , <a href="#">NP_001035822.1</a>
<b>RefSeq Size:</b>	2872 bp
<b>RefSeq ORF:</b>	1020 bp
<b>Locus ID:</b>	26095
<b>UniProt ID:</b>	<a href="#">Q4JDL3</a>
<b>Cytogenetics:</b>	10q11.22
<b>Protein Families:</b>	Druggable Genome, Phosphatase
<b>Gene Summary:</b>	The product of this gene belongs to the family of classical tyrosine-specific protein tyrosine phosphatases. Many protein tyrosine phosphatases have been shown to regulate fundamental cellular processes. The encoded protein appears to be targeted to sites of actin polymerization. A pseudogene of this gene has been defined on chromosome 10. Alternative splicing results in multiple transcript variants. [provided by RefSeq, Apr 2014]