

Product datasheet for **RG212874**

MAGEB10 (NM_182506) Human Tagged ORF Clone

Product data:

Product Type:	Expression Plasmids
Product Name:	MAGEB10 (NM_182506) Human Tagged ORF Clone
Tag:	TurboGFP
Symbol:	MAGEB10
Mammalian Cell Selection:	Neomycin
Vector:	pCMV6-AC-GFP (PS100010)
E. coli Selection:	Ampicillin (100 ug/mL)
ORF Nucleotide Sequence:	>RG212874 representing NM_182506 Red=Cloning site Blue=ORF Green=Tags(s)

TTTTGTAATACGACTCACTATAGGGCGGCCGGGAATTCGTCGACTGGATCCGGTACCGAGGAGATCTGCC
GCC**CGATCGCC**

ATGCCTCGAGGTCAGAAGAGTAACTCCGTGCCAGGGAAAAACGCCGTCAGGCCGAGGAGGGCTGGAAG
ATTTGATAGATGCTCTGGACATTTTAGAAGAGGAGGAAGAATCTCCCCCTCTGCCTCTGCTTGTGTTGAA
GGATGTTTCCAGAGTTCACTTGATGGGGCATCCAACAATCCCCATGGACTTCAGGAAGCCCAATCCACC
AGCACATCTGCTACAGCTGCTTACACACAAGACATCCCGAAGGAGTCAACGACCAATGGAAGAAAAGGC
CAATATGCACACAAGATCTAGAAGCCACTGATAGCTTTCCAGAGGCCCTGTAGATGAGAAAGTAATTAT
ATTGGTGCATTACTTGCTGTACAAGTACCAATGAAAGAGCCATTACAAGGCAGATATGCTGAGAAAT
GTAACCCAAATGTCCAAGAGCCAGTTCCCTGTAATCCTGAGCAGAGCTTCTGAGCACCTGGAGCTGATCT
TTGGTCTTGACCTGAAGGAAGTGGAGCCTAATAAGCACATCTATGTCCTTGTCAACAACTAGATCTAGG
CTGTGATGCAAAGCTGAGTGATGAAACAGGCGTGCCCAAGACTGGCCTGCTGATGACTGTCCTGGGTATT
ATCTTCACAAATGGCAATTGTGTCGCTGAGGAGGAAGTCTGAAAAGTGTAAACACGATGGGGTTATATG
ACGGAATTGAGCACTTCATGTTTGGGGAGCCAGGAAGCTCCTTACCAAAGATTTGGTGAAGAAAATTA
CCTGGAGTACCAGCAAGTGCCCAACAGTGATCCTCCACGCTATCAATTCATGGGGCCCAAGAGCCCAT
GCTGAAACCAGCAAGATGAAAGTCTTGAGTTTTTGGCCAAGGTAATGATACAGCTCCCAAGTGAATTCT
CAAAGTGTATACAGAGGCTTTACAAGATGAGGAAGAGAGGCCAGAGCCAGAGTTGCAGCAAGGCTCG
CGTTAGTGCCACAGCCGGTGCACGTTCCAAGGTTAAGTCCAGCAAGTCCCAACTGCAG

ACGCGTACGCGGCCGCTCGAG - GFP Tag - GTTTAA



[View online »](#)

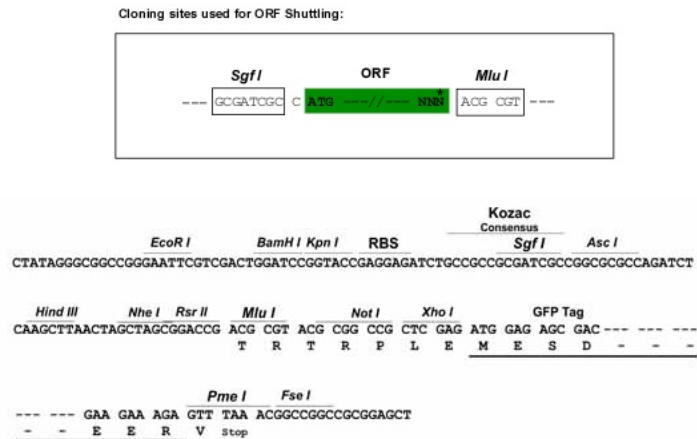
Protein Sequence: >RG212874 representing NM_182506
Red=Cloning site Green=Tags(s)

MPRGQKSKLRAREKRRQARGGLEDLIDALDILEEEEEPPPSASACLKDVSQSSLDGASNNPHGLQEAQST
 STSATAASHTRHPEGVNDQMEERP ICTQDLEATDSFPRGPVDEKVIILVHYLLYKYQMKEPITKADMLRN
 VTQMSKSQFPVILSRASEHLELIFGLDLKEVEPNKHIYVLVNKLDLGCDAKLSDETGVPKTGLLMTVLGI
 IF TNGNCVAEEEEVWKVFNTMGLYDGI EHF MFGEPRKLLTKDLVKENYLEYQQVPNSDPPRYQFLWGPRAH
 AETSKMKVLEFLAKVNDTAPSEFSN WYTEALQDEEERARARVA AKARVSATAGARSKVKSSKSQLQ

TRTRPLE - GFP Tag - V

Restriction Sites: SgfI-MluI

Cloning Scheme:



ACCN: NM_182506

ORF Size: 1041 bp

OTI Disclaimer: The molecular sequence of this clone aligns with the gene accession number as a point of reference only. However, individual transcript sequences of the same gene can differ through naturally occurring variations (e.g. polymorphisms), each with its own valid existence. This clone is substantially in agreement with the reference, but a complete review of all prevailing variants is recommended prior to use. [More info](#)

OTI Annotation: This clone was engineered to express the complete ORF with an expression tag. Expression varies depending on the nature of the gene.

Components: The ORF clone is ion-exchange column purified and shipped in a 2D barcoded Matrix tube containing 10ug of transfection-ready, dried plasmid DNA (reconstitute with 100 ul of water).

Reconstitution Method:

1. Centrifuge at 5,000xg for 5min.
2. Carefully open the tube and add 100ul of sterile water to dissolve the DNA.
3. Close the tube and incubate for 10 minutes at room temperature.
4. Briefly vortex the tube and then do a quick spin (less than 5000xg) to concentrate the liquid at the bottom.
5. Store the suspended plasmid at -20°C. The DNA is stable for at least one year from date of shipping when stored at -20°C.

RefSeq: [NM_182506.3](#), [NP_872312.2](#)

RefSeq Size: 1567 bp

RefSeq ORF: 1044 bp

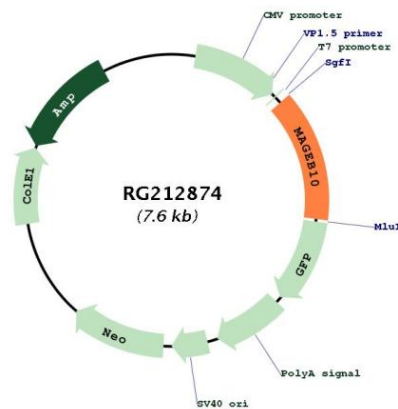
Locus ID: 139422

UniProt ID: [Q96LZ2](#)

Cytogenetics: Xp21.3

Gene Summary: This gene encodes a member of the B subfamily of the melanoma associated antigen protein family. The encoded protein is specifically expressed in testis and tumor cells. [provided by RefSeq, Apr 2010]

Product images:



Circular map for RG212874