

## Product datasheet for **RG212825**

### LGR5 (NM\_003667) Human Tagged ORF Clone

#### Product data:

Product Type:	Expression Plasmids
Product Name:	LGR5 (NM_003667) Human Tagged ORF Clone
Tag:	TurboGFP
Symbol:	LGR5
Synonyms:	FEX; GPR49; GPR67; GRP49; HG38
Mammalian Cell Selection:	Neomycin
Vector:	pCMV6-AC-GFP (PS100010)
E. coli Selection:	Ampicillin (100 ug/mL)



[View online »](#)

**ORF Nucleotide  
Sequence:**

>RG212825 representing NM\_003667  
 Red=Cloning site Blue=ORF Green=Tags(s)

TTTTGTAATACGACTCACTATAGGGCGGCCGGAATTCGTCGACTGGATCCGGTACCGAGGAGATCTGCC  
 GCC**CGCATCGCC**

ATGGACACCTCCCGCTCGGTGTGCTCCTGTCTTGCCTGTGCTGCTGCAGCTGGCGACCGGGGACAGT  
 CTTCCAGGTCTGGTGTGTTGCTGAGGGGCTGCCCCACACACTGTATTGCGAGCCCGACGGCAGGATGTT  
 GCTCAGGGTGGACTGCTCCGACCTGGGGCTCTCGGAGCTGCCTTCCAACCTCAGCGTCTTACCTCTAC  
 CTAGACCTCAGTATGAACAACATCAGTCAGCTGCTCCGAATCCCTGCCAGTCTCCGCTTCTGGAGG  
 AGTTACGTCTTGGCGAAACGCTCTGACATACATTCCCAAGGGAGCATTCACTGGCCTTACAGTCTTAA  
 AGTTCTTATGCTGCAGAATAATCAGCTAAGACACGTACCCACAGAAGCTCTGCAGAATTTGCGAAGCCTT  
 CAATCCCTGCGTCTGGATGCTAACCACATCAGCTATGTGCCCAAGCTGTTTCAGTGGCCTGCATTCCC  
 TGAGGCACCTGTGGCTGGATGACAATGCGTTAACAGAAAATCCCGTCCAGGCTTTTAGAAGTTTATCGGC  
 ATTGCAAGCCATGACCTTGGCCCTGAACAAAATACACCACATACCAGACTATGCCTTTGGAAACCTCC  
 AGCTTGGTAGTTCTACATCTCCATAACAATAGAATCCACTCCCTGGGAAAGAAATGCTTTGATGGCTCC  
 ACAGCCTAGAGACTTTAGATTTAAATTACAATAACCTTGATGAATTCCTCACTGCAATTAGGACACTCTC  
 CAACCTTAAAGAAGTCTAGGATTTATAGCAACAATATCAGGTGATACCTGAGAAAGCATTGTAGGCAAC  
 CCTTCTCTTATTACAATACATTTCTATGACAATCCCATCCAATTTGTTGGGAGATCTGCTTTTCAACATT  
 TACCTGAACCTAAGAAGTCTGACTCTGAATGGTGCCTCACAAAATACTGAATTTCTGATTTAACTGGAAC  
 TGCAAACCTGGAGAGTCTGACTTTAACTGGAGCACAGATCTCATCTTCTCAAACCGTCTGCAATCAG  
 TTACCTAATCTCCAAGTCTAGATCTGTCTTACAACCTATTAGAAGATTTACCCAGTTTTTCCAGTCTGCC  
 AAAAGCTTCAGAAAATTGACCTAAGACATAATGAAATCTACGAAATTAAGTTGACACTTTCCAGCTGCT  
 GCTTAGCCTCCGATCGCTGAATTTGGCTTGAACAAAATGCTATTATTACCCCAATGCATTTTCCACT  
 TTGCCATCCCTAATAAAGCTGGACCTATCGTCCAACCTCTGTCGCTTTTCTATAACTGGGTTACATG  
 GTTAACTCACTTAAAATTAACAGGAAATCATGCCTTACAGAGCTTGATATCATCTGAAAATTTCCAGA  
 ACTCAAGGTTATAGAAATGCCTTATGCTTACCAGTGTGTGCAATTTGGAGTGTGTGAGAATGCCTATAAG  
 ATTTCTAATCAATGGAATAAAGGTGACAACAGCAGTATGGACGACCTTCATAAGAAAGTGTGGAATGT  
 TTCAGGCTCAAGATGAACGTGACCTTGAAGATTTCTGCTGACTTTGAGGAAGACCTGAAAGCCCTTCA  
 TTCAGTGCAGTGTTCACCTTCCCAGGCCCTTCAAACCTGTGAACACCTGCTTGATGGCTGGCTGATC  
 AGAATTGGAGTGTGGACCATAGCAGTTCTGGCACTTACTTGAATGCTTTGGTGACTTCAACAGTTTTCA  
 GATCCCTCTGTACATTTCCCCATTAACCTGTTAATTGGGGTATCGCAGCAGTGAACATGCTCACGGG  
 AGTCTCCAGTGCCGTGCTGGCTGGTGTGGATGCGTTCACTTTTGGCAGCTTTGCACGACATGGTGCCTGG  
 TGGGAGAATGGGGTTGGTTGCCATGTCATTGGTTTTTGTCCATTTTGTCTCAGAATCATCTGTTTTCC  
 TGCTTACTCTGGCAGCCCTGGAGCGTGGGTTCTCTGTGAAATATTCTGCAAAATTTGAAACGAAAGCTCC  
 ATTTTCTAGCCTGAAAGTAAATCATTGCTCTGTGCCCTGCTGGCCTTGACCATGGCCGACGTTCCCTG  
 CTGGGTGGCAGCAAGTATGGCGCCTCCCTCTCTGCTGCCTTTGCCTTTGGGGAGCCAGCACCATGG  
 GCTACATGGTCTGCTCATCTTGTCAATCCCTTTGCTTCTCATGATGACCATTGCCTACACCAAGCT  
 CTACTGCAATTTGGACAAGGGAGACCTGGAGAATATTTGGGACTGCTCTATGGTAAAACACATTGCCCTG  
 TTGCTCTTACCACCTGCATCCTAAACTGCCCTGTGGCTTTCTGTCTTCTCCTTTTAAATAAACCTTA  
 CATTTATCAGTCTGAAGTAATTAAGTTTATCCTTCTGGTGGTAGTCCCCTTCTGCATGTCTCAATCC  
 CCTTCTACATCTTGTCAATCCTCACTTTAAGGAGGATCTGGTGGAGCTGAGAAAACAAACCTACGTC  
 TGGACAAGATCAAAACACCCAAGCTTGTGCAATTAACCTGATGATGTCGAAAAACAGTCTGTGACT  
 CAACTCAAGCCTTGTAACCTTTACCAGCTCCAGCATCACTTATGACCTGCCTCCAGTTCGGTCCATC  
 ACCAGCTTATCCAGTACTGAGAGCTGCCATCTTCTCTGTGGCATTGTCCCATGTCTC

**ACGCGT**ACGCGGCCGCTCGAG - GFP Tag - GTTTAA

Protein Sequence: >RG212825 representing NM\_003667  
 Red=Cloning site Green=Tags(s)

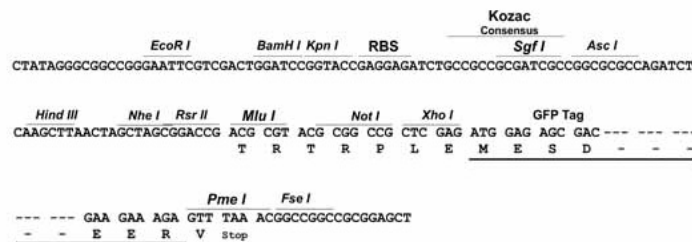
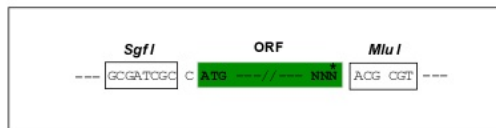
MDTSRLGVLLSLPVLLQLATGGSSPRSGVLLRGCPHCHCEPDGRMLLRVDCSDLGSELPSNLSVFSTY  
 LDLSMNNISQLLPNPLPSLRFLEELRLAGNALTYIPKGAFTGLYSLKVLMLQNNQLRHVPTEALQNLRS  
 QSLRLDANHISYVPPSCFSGLHSLRHLWDDNALTEIPVQAFRSLSALQAMTLALNKIHHIPDYAFGNLS  
 SLVVLHLHNNRIHSLGKKCFDGLHSLLETLDLNYNNLDEFPTAIRTL SNLKELGFHSNNIRSIPEKAFVGN  
 PSLITIHFYDNPIQFVGRSAFQHLPELRTLTLNGASQITTEFPDLTGTANLESRTLGAQISSLPQTVCNQ  
 LPNLQVLDLSYNLLEDLPSFSVCQKLQKIDLRHNEIYEIKVDTFQQLSLRSLNLAWNKIAIHPNAFST  
 LPSLIKLDLSSNLLSSFPITGLHGLTHLKLGNHALQSLISSENFPELVKIEMPYAYQCCAFGVCENAYK  
 ISNQWNKGDSSMDDLHKK DAGMFAQDERDLEDFLLDFEEDLKALHSVQCSPSPGPFKPCHELLDGWLI  
 RIGVWTIAVLALTCNALVTSTVFRSPLYISPIKLLIGVIAAVNMLTGVS SAVLAVGDAFTFGSFARHGAW  
 WENGVGCHVIGFLSIFASESSVLLTLAALERGF SVKYS AKFETKAPFSSLKVIILLCALLAL TMAAVPL  
 LGGSKYGASPLCLPLPFGEPTMGYVALILLNSLCFLMMTIAYTKLYCNLDKGDLENIWDCSMVKHIAL  
 LLFTNCILNCPVAFLSFSSLINLTFISPEVIK FILLVVVPLPACLNPLL YILFNPHFKEDLVSLRKQTYV  
 WTRSKHPSLMSINSDDVEKQSCDSTQALVTFTSSSITYDLPPSSVPSPAYPVTESCHLSSVAFVPL

TRTRPLE - GFP Tag - V

Restriction Sites: SgfI-MluI

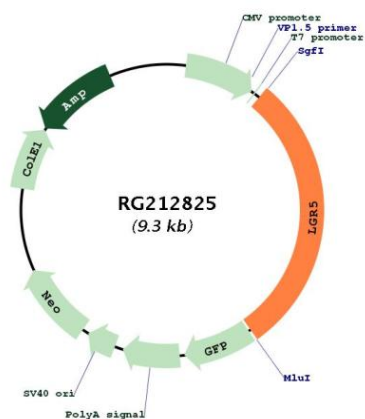
Cloning Scheme:

Cloning sites used for ORF Shuttling:



<b>ACCN:</b>	NM_003667
<b>ORF Size:</b>	2721 bp
<b>OTI Disclaimer:</b>	The molecular sequence of this clone aligns with the gene accession number as a point of reference only. However, individual transcript sequences of the same gene can differ through naturally occurring variations (e.g. polymorphisms), each with its own valid existence. This clone is substantially in agreement with the reference, but a complete review of all prevailing variants is recommended prior to use. <a href="#">More info</a>
<b>OTI Annotation:</b>	This clone was engineered to express the complete ORF with an expression tag. Expression varies depending on the nature of the gene.
<b>Components:</b>	The ORF clone is ion-exchange column purified and shipped in a 2D barcoded Matrix tube containing 10ug of transfection-ready, dried plasmid DNA (reconstitute with 100 ul of water).
<b>Reconstitution Method:</b>	<ol style="list-style-type: none"><li>1. Centrifuge at 5,000xg for 5min.</li><li>2. Carefully open the tube and add 100ul of sterile water to dissolve the DNA.</li><li>3. Close the tube and incubate for 10 minutes at room temperature.</li><li>4. Briefly vortex the tube and then do a quick spin (less than 5000xg) to concentrate the liquid at the bottom.</li><li>5. Store the suspended plasmid at -20°C. The DNA is stable for at least one year from date of shipping when stored at -20°C.</li></ol>
<b>RefSeq:</b>	<a href="#">NM_003667.2</a> , <a href="#">NP_003658.1</a>
<b>RefSeq Size:</b>	2880 bp
<b>RefSeq ORF:</b>	2724 bp
<b>Locus ID:</b>	8549
<b>UniProt ID:</b>	<a href="#">O75473</a>
<b>Cytogenetics:</b>	12q21.1
<b>Domains:</b>	7tm_1, LRRNT, LRR, LRR_TYP, LRR_PS
<b>Protein Families:</b>	Druggable Genome, GPCR, Transmembrane
<b>Gene Summary:</b>	The protein encoded by this gene is a leucine-rich repeat-containing receptor (LGR) and member of the G protein-coupled, 7-transmembrane receptor (GPCR) superfamily. The encoded protein is a receptor for R-spondins and is involved in the canonical Wnt signaling pathway. This protein plays a role in the formation and maintenance of adult intestinal stem cells during postembryonic development. Several transcript variants encoding different isoforms have been found for this gene. [provided by RefSeq, Sep 2015]

## Product images:



Circular map for RG212825