

## Product datasheet for **RG212770**

### USP32 (NM\_032582) Human Tagged ORF Clone

#### Product data:

Product Type:	Expression Plasmids
Product Name:	USP32 (NM_032582) Human Tagged ORF Clone
Tag:	TurboGFP
Symbol:	USP32
Synonyms:	NY-REN-60; USP10
Mammalian Cell Selection:	Neomycin
Vector:	pCMV6-AC-GFP (PS100010)
E. coli Selection:	Ampicillin (100 ug/mL)
ORF Nucleotide Sequence:	>RG212770 representing NM_032582 Red=Cloning site Blue=ORF Green=Tags(s)

TTTTGTAATACGACTCACTATAGGGCGGCCGGAATTCGTCGACTGGATCCGGTACCGAGGAGATCTGCC  
GCC**CGATCGCC**

ATGGGTGCCAAGGAGTCACGGATCGGATTCCTCAGCTACGAGGAGGCGCTGAGGAGAGTTACAGATGTAG  
AGCTAAAACGACTGAAGGATGCTTTCAAGAGGACCTGTGGACTCTCATATTACATGGCCAGCACTGCTT  
CATCCGGGAAGTCTTGGGGATGGAGTGCCTCAAAGGTTGCTGAGGTGATTTACTGTTCTTTTGGTGGA  
ACATCAAAGGGCTGCACCTCAATAATTAATAGTTGGACTTGCCTCCTACAAGAGGCAAGATGAAG  
AGAAAGCAAAATACATTTTTAGTCTTTTTCAAGTGAATCTGGGAATGTTATACGGGAAGAAATGGA  
AAGAATGCTCCACGTGGTGGATGGTAAAGTCCCAGATACACTCAGGAAGTTTTCTCAGAGGGTGAAAAG  
GTAACACTAGAAAAGTTAGAAATTGGCTTTTTCTAAACAAGATGCTTTTACTTTCTCTCGATGGCTTC  
TATCTGGAGGTGTGTATGTTACCCTCACTGATGATAGTGATACTCCTACTTTCTACCAAACCTCTGGCTGG  
AGTCACACATTTGGAGGAATCAGACATCATTGATCTTGAGAAACGCTATTGGTTATTGAAGGCTCAATCC  
CGGACTGGACGATTTGATTTAGAGACATTTGGCCATTGGTTTACCACCTATTCGTCATCTCTAAGTG  
AAGTTTGTAAATGCTTTTGATGAAAATCGTGACAATCACATAGATTTAAGGAGATACCTGTGGGTT  
ATCAGCCTGTTGCAGGGGACCCCTGGCTGAAAGACAAAATTTGCTTCAAGGTATTTGATGTTGACCGT  
GATGGAGTCTCTCCAGGTTGAACTGAGAGACATGGTGGTTGCACTTTTAGAAGTCTGGAAGGACAAAC  
GCACTGATGATATTCTGAATTACATATGGATCTCTGATATTGTAGAAGGCATACTGAATGCACATGA  
CACCACAAAGATGGGTACTCTTACTCTGGAAGACTATCAGATCTGGAGTGTGAAAATGTTCTTGCCAAT  
GAGTTTTTGAACCTCCTTTCCAGGTGTGTACATAGTTCTGGGTTAAGACCAGCTACTCCGGAAGAAG  
AAGGACAAATTATTAGAGGATGGTTAGAACGAGAGAGCAGGTATGGTCTGCAAGCAGGACACAACCTGGTT  
TATCATCTCCATGCAGTGGTGGCAACAGTGAAAGAATATGTCAAATACGATGCCAACCTGTGGTAATT  
GAGCCATCATCTGTTTTGAATGGAGGAAAATACTATTTGGAAGTGCAGCCATCCTATGGAGCAGGTCCG  
AAGATAGAATTGGAAGCAGCCTCAGTTACGTGAATACTACAGAAGAGAAATTTTCAGACAACATTTCTAC  
TGCATCTGAAGCCTCAGAAACTGCTGGCAGCGCTTTCTGTATTCTGCCACACCAGGGGCAGATGTTTGC



TTTGCTCGACAACATAACACTTCTGACAATAACAACCAGTGTTTCTGGGAGCCAATGGGAATATTTTGT  
 TGCACCTTAACCCCTCAGAAAACAGGGGCTATTGATAATCAGCCATTAGTAACTCAAGAACCAGTAAAGGC  
 TACATCATTAACTAGAAAGGAGGACGATTAACGAACCTCCACAGCTGATTCATGGAAGAGACTATGAA  
 ATGGTCCCAGAACCTGTGTGGAGAGCACTTTATCACTGGTATGGAGCAAACCTGGCCTTACCTAGACCAG  
 TTATCAAGAACAGCAAGACAGACATCCCAGAGCTGGAATTATTTCCCGCTATCTTCTTCTGAGACA  
 GCAGCCTGCCACTCGGACACAGCAGTCTAACACTGGGTGAATATGGGAAATGTACCTTCTCCGAATGCA  
 CCTTTAAAGCGGTATTAGCCTATACAGGCTGTTTTAGTCGAATGCAGACCATCAAGGAAATTCAGAA  
 ATCTATCTCAAAGGCTGCGCATTAAAGAGGAAGATATGCGCCTGTGGCTATACAACAGTGAGAACTACCT  
 TACTCTTCTGGATGATGAGGATCATAAATTGGAATATTTGAAAATCCAGGATGAACAACCTGGTAATT  
 GAAGTTCGCAACAAAGATATGAGTTGGCCTGAGGAGATGTCTTTATAGCAAATAGTAGTAAAATAGATA  
 GACACAAGGTTCCACAGAAAAGGGAGCCACAGGTCTAAGCAATCTGGGAAACACATGCTTCATGAACTC  
 AAGCATCCAGTGTGTAGTAACACACAGCCACTGACACAGTATTTTATCTCAGGGAGACATCTTTATGAA  
 CTCACAGGACAAATCCCATTGGTATGAAGGGGCATATGGCTAAATGCTATGGTATTTAGTGCAGGAAC  
 TTTGGAGTGGAACTCAGAAGAATGTTGCCCATTAAGCTTCGGTGGACCATAGCAAATATGCTCCAG  
 GTTTAATGGGTTTCAGCAACAGGACTCCCAAGAACTTCTGGCTTTTCTTGGATGGTCTTCATGAAGAT  
 CTTAATCGAGTCCATGAAAAGCCATATGTGGAACGAAGGACAGTGTGGGCGACCAGACTGGGAAGTAG  
 CTGCAGAGGCTGGGACAACCATCTAAGAAGAAATAGATCAATTGTTGTGGATTTGTTCCATGGGACGCT  
 AAGATCTCAAGTAAAATGCAAGACATGTGGGCATATAAGTGTCCGATTTGACCCTTTCAATTTTTGTCT  
 TTGCCACTACCAATGGACAGTTATATGCACTTAGAAAATAACAGTGATTAAGTTAGATGGTACTACCCCTG  
 TACGGTATGGACTAAGACTGAATATGGATGAAAAGTACACAGGTTTAAAAAACAGCTGAGTGATCTCTG  
 TGGACTAATTCAGAACAAATCCTTCTAGCAGAAGTACATGGTCCAACATAAAGAACTTCTCAGGAC  
 AACCAAAAAGTACGACTCTCAGTGAGTGGATTTTGTGTGCATTTGAAATTCCTGTCCCTGTGTCTCCAA  
 TTTCAGTCTTAGTCCAACACAGACAGATTTCTCCTCTCGCCATCTACAATGAAATGTTCAACCTGGA  
 TACCAATGGGGACCTACCCGACCAATATTCATCCCAATGGAATGCCAAACACTGTTGTGCCATGTGGA  
 ACTGAGAAGAACTTACAATGGAATGGTAAATGGTCCATGCCATCTTCTGACAGCCCTTTACAG  
 GTTACATCATTGCAGTCCACGAAAAATGATGAGGACAGAACTGTATTTCTGTCTCAGAAAGATCG  
 CCCCAGCCTCTTTGGAATGCCATTGATTGTTCCATGACTGTGCATACCCGGAAGAAAGACCTATATGAT  
 GCGGTTTGGATTCAAGTATCCCGTTAGCGAGCCACTCCACCTCAGGAAGCTAGTAAATCATGCCCAGG  
 ATTGTGACGACAGTATGGGCTATCAATATCCATTACTCTACGAGTTGTGCAGAAAGATGGGAACTCCTG  
 TGCTTGGTGCCCATGGTATAGATTTTGCAGAGGCTGTAATAATGATTGTGGGAAGACAGAGCTTTCATT  
 GGAATGCCTATATCGCTGTGGATTGGGATCCCACAGCCCTTACCTTCGCTATCAAACATCCCAGGAAA  
 GGGTTGTAGATGAGCATGAGAGTGTGGAGCAGAGTCCGGCAGCGCAAGCCGAGCCATCAACCTGGACAG  
 CTGTCTCCGTGCTTTACCAGTGAGGAAGACTAGGGGAAAAATGAGATGTACTACTGTTCCAAGTGAAG  
 ACCCACTGCTTAGCAACAAAGAAGCTGGATCTCTGGAGGCTTCCACCCATCCTGATTATTCACCTAAGC  
 GATTTCAATTTGTAATGGTCCGGTGGATAAAAATCACAGAAAATTTGCAAAATTTCTCGGGAAAGTTTGA  
 TCCAAGTGCTTTTTTGGTACCAAGAGACCCGGCTCTGCCAGCATAAACCACTCACACCCAGGGGGAT  
 GAGCTCTCTGAGCCCAGGATTCTGGCAAGGGAGGTGAAGAAAGTGGATGCCGAGAGTTCGGCTGGGAAG  
 AGGACGTGCTCCTGAGCAAAAGCCATCCTCACTCAGCGCTAACATCATCAGCAGCCGAAAGGTTCTCC  
 TTCTTCATCAAGAAAAAGTGAACCAAGCTGTCCCTCCAGCAAAAACAGCAGCCCTAATAGCAGCCACGG  
 ACTTTGGGGAGGACAAAGGGAGGCTCCGGCTGCCCCAGATTGGCAGCAAAAATAAAGTGTCAAGTAGTA  
 AAGAGAAGTGGATGCCAGCAAAGAAAATGGGGCTGGGCAGATATGTGAGCTGGTGACGCTTGTAGTCG  
 AGGGCATGTGCTGGGGGAGCAACCAAGAGATTGGTCACTCCTCAGGACCATGAGGTAGCTTTGGCCAAT  
 GGATTCCTTTATGAGCATGAAGCATGTGGCAATGGCTACAGCAATGGTCACTTGGAAACCAAGTGAAG  
 AAGACAGCACTGATGACCAAGAGAAGATACTCGTATTAAGCCTATTTATAATCTATATGCAATTTCTGT  
 CCATTCAGGAATCTGGTGGGGCCATTACGTCACTTATGCCAAAACCCAACTGCAAGTGGTACTGT  
 TACAATGACAGCAGCTGAAGGAACTTACCCGGATGAAATGACACCGACTCTGCCTACATTCTTTTCT  
 ATGAGCAGCAGGGATAGACTATGCACAATTTCTGCCAAAGACTGATGGCAAAAAGATGGCAGACACAAG  
 CAGTATGGATGAAGACTTTGAGTCTGATTACAAAAGTACTGTGTGTACAG

ACGCGTACGCGGCCGCTCGAG - GFP Tag - GTTTAA

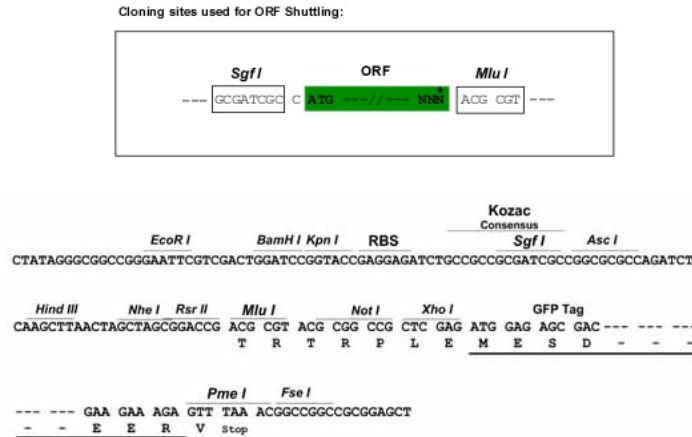
Protein Sequence: >RG212770 representing NM\_032582  
 Red=Cloning site Green=Tags(s)

MGAKESRIGFLSYEEALRRVTDVELKRLKDAFKRTCGLSYYMGQHCFIREVLGDGVPPKVAEVIYCSFGG  
 TSKGLHFNNLIVGLVLLTRGKDEEKAKYIFSLFSSESGNYVIREEMERMLHVVDGKVPDTRLRKCSEGEK  
 VNYEKFRNWLFLNKDAFTFSRWLLSGGVYVTLTDDSDPTTFYQTLAGVTHLEESDIIDLEKRYWLLKAQS  
 RTGRFDLETFGLVSPPIRPSLSEGLFNAFDENRDNHIDFKEISGLSACCRGPLAERQKFCFKVFDVDR  
 DGVL SRVELRDMYVALLEWVKDNRTDDIPELHMDLSDIVEGILNAHDTTKMGHLTLEDYQIWSVKNVLAN  
 EFLNLLFQVCHIVLGLRPATPEEEGQIRGWLERESRYGLQAGHNWFIISMQWWQWQKEYVYKIDANPVVI  
 EPSSVNLNGGKYSFGTAAHPMEQVEDRIGSSLSYVNTTEEFSDNISTASEASETAGSGFLYSATPGADV  
 FARQHNTSDNNNQCLLGANGNILLHLNPQKPGAIDNQLVTQEPVKATSLTLEGGRLKRPQLIHGRDYE  
 MVPEPVWRALYHWYGANLALPRPVIKNSKTDIPELELFPRYLLFLRQQPATRTQQSNIWVNMGNVPSNA  
 PLKRVLAYTGCFSRMQTIKEIHEYLSQRLRIKEEDMRLWLYNSENYLTLDDDEDHKLLEYLKIQDEQHLVI  
 EVRNKDMSWPEEMSFIASSKIDRHKVPTEKGATGLSNLGNTCFMNSSIQCVSNTQPLTQYFISGRHLYE  
 LNRTNPIGMKGHMAKCYGDLVQELWSGTQKNVAPLKLRTWIAKYAPRFNGFQQQDSQELLAFLLDGLHED  
 LNRVHEKPYVELKDS DGRPDWEVAAEAWDNHLRRNRSIVVDLFHGQLRSQVKCKTCGHISVRFDPFNFLS  
 LPLPMSYMHLEITVIKLDGTTVPVRYGLRLNMDEKYTGLKKQLSDL CGLNSEQILLAEVHGSNIKFPQD  
 NQKVRLSVSGFLCAFEIPVPVSPISASSPTQDFSSSPSTNEMFTLT TNGDLPRPIFIPNGMPNTVVPCG  
 TEKNFTNGMVNGHMPSLPD SPFTGYIIAVHRKMMRTEL YFLSSQKNRPSLFGMPLIVPCTVHTRKKDLYD  
 AVWIQVSRLASPLPPEASNHAQDCDDSMGYQYPFTLRVVQKDGNSCAWCPWYRFCRGCKIDCGEDRAFI  
 GNAYIAVDWDPTALHLRYQTSQERVVDEHESVEQSRRAQAEPINLDSCLRAFTSEEELGENEMYYSKCK  
 THCLATKKLDLWRLPPIIIHLKRFQFVNGRWIKSQKIVKFPRESFDPSAFLVPRDPALCQHKPLTPQGD  
 ELSEPRILAREVKKVDAQSSAGEEDVLLSKSPSSLSANIISPPKSPSSSRKSGTSCPSSKNSSPNSSPR  
 TLGRSKGRLRLPQIGSKNKLSSKENLDASKENGAGQICELADALSRGHVLGGSQPELVTPQDHEVALAN  
 GFLEYEHEACNGYSNGQLGNHSEEDSTDQREDTRIKPIYNLYAISCHSGILGGGHVYTYAKNPCKWYC  
 YNDSSCKELHPDEIDTDSAYILFYEQQGIDYAQFLPKTDGKKMADTSSMDEDFESDYKKYCVLQ

TRTRPLE - GFP Tag - V

Restriction Sites: SgfI-MluI

Cloning Scheme:



ACCN: NM\_032582

ORF Size: 4812 bp

**OTI Disclaimer:** Due to the inherent nature of this plasmid, standard methods to replicate additional amounts of DNA in E. coli are highly likely to result in mutations and/or rearrangements. Therefore, OriGene does not guarantee the capability to replicate this plasmid DNA. Additional amounts of DNA can be purchased from OriGene with batch-specific, full-sequence verification at a reduced cost. Please contact our customer care team at [custsupport@origene.com](mailto:custsupport@origene.com) or by calling 301.340.3188 option 3 for pricing and delivery.

The molecular sequence of this clone aligns with the gene accession number as a point of reference only. However, individual transcript sequences of the same gene can differ through naturally occurring variations (e.g. polymorphisms), each with its own valid existence. This clone is substantially in agreement with the reference, but a complete review of all prevailing variants is recommended prior to use. [More info](#)

**OTI Annotation:** This clone was engineered to express the complete ORF with an expression tag. Expression varies depending on the nature of the gene.

**Components:** The ORF clone is ion-exchange column purified and shipped in a 2D barcoded Matrix tube containing 10ug of transfection-ready, dried plasmid DNA (reconstitute with 100 ul of water).

**Reconstitution Method:**

1. Centrifuge at 5,000xg for 5min.
2. Carefully open the tube and add 100ul of sterile water to dissolve the DNA.
3. Close the tube and incubate for 10 minutes at room temperature.
4. Briefly vortex the tube and then do a quick spin (less than 5000xg) to concentrate the liquid at the bottom.
5. Store the suspended plasmid at -20°C. The DNA is stable for at least one year from date of shipping when stored at -20°C.

**RefSeq:** [NM\\_032582.4](#)

**RefSeq Size:** 7026 bp

**RefSeq ORF:** 4815 bp

**Locus ID:** 84669

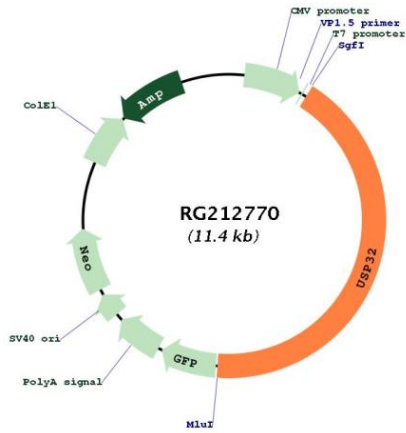
**UniProt ID:** [Q8NFA0](#)

**Cytogenetics:** 17q23.1-q23.2

**Domains:** UCH, EFh, DUSP

**Protein Families:** Druggable Genome, Protease

Product images:



Circular map for RG212770