

## Product datasheet for **RG212767**

### **SHPRH (NM\_001042683) Human Tagged ORF Clone**

#### Product data:

Product Type:	Expression Plasmids
Product Name:	SHPRH (NM_001042683) Human Tagged ORF Clone
Tag:	TurboGFP
Symbol:	SHPRH
Synonyms:	bA545I5.2
Mammalian Cell Selection:	Neomycin
Vector:	pCMV6-AC-GFP (PS100010)
E. coli Selection:	Ampicillin (100 ug/mL)
ORF Nucleotide Sequence:	>RG212767 representing NM_001042683 Red=Cloning site Blue=ORF Green=Tags(s)

TTTTGTAATACGACTCACTATAGGGCGGCCGGAATTCGTCGACTGGATCCGGTACCGAGGAGATCTGCC  
GCC**CGATCGCC**

ATGAGCAGCCGACGAAACGTGCTCCTCCAGTGAGGGTAGATGAGGAAAAGAGGCAGCAGCTTCATTGGA  
ATATGCATGAGGACAGAAGGAATGAACCTATCATCATAAGTGATGATGACGAGCAGCCCTGCCAGGTTC  
AGATACCTCTTCTGCTCATTATATCATTCTAAGTGATAGTCTAAAGGAAGAAGTGGCTCACAGAGATAAG  
AAGAGGTGTTCAAAGTGGTGGCTTCTCAAACCAATTGAAAAAGAAGAGACTGTTGGTATTTTTTCCC  
CTTTGCTGTAAAGTTAAATATTGTGATTTCTCCCTATCATTGATAATTCCTGAAAGCATTCTAGG  
AGAATTAACCTTTCAGCTTCTTCTGCACAGAGTTAATTGAAAAATTTTCCGAAAGGAGTATTACATTG  
ATGAGTTCAGAGTCAAGCAATCAGTTCCTGATTTATGTTTCATTCAAAGGTGAAGATGTAGAGAAACAAA  
AAAAAGAACCAGTGAATTTGTGACAAGGGTATTCTGGTGGAGTCATCCTTCAGTGGTGAATGTTAGA  
AGATTTGGGGTGGCTACAAAAGAAGAGAAGAATAAACTCTATCAGAAACCAGAAGGAAATCACATTATC  
AAGGTTGGAATTTATCTTTTGAAGCTGGCCTAGCAAACTAGACTTCTTGAGTGATGCAAAATCAAGAA  
TGAAAAAGTTCAATCAGCTCATGAAGAAAGTAAATGGAAAAGTTACACAATCTATTATCCAGATGTGTT  
GGAAGAGGATGAAGATGATCCGGAGAGTGAGCCAGAGGGACAAGACATTGACGAGCTGTATCACTTTGTG  
AAACAAACACATCAGCAAGAAACGCAGTCCATCCAAGTGGATGTCAGCATCCTGCATTGATCCCTGTGT  
TGAGACCCTACCAAAGAGAGGCTGTCAATTGGATGCTACAACAAGAGTGTTCAGAAGCAGTCCCTGCTAC  
TGAAAGTGCCCTGCACCTTCTATGGCGAGAGATTGTTACATCTGAGGGTCTGAAACTCTACTATAATCCA  
TATACAGGCTGCATCATTCTGAGTACCCAAATCTGGGCCGAGTTGCTTGGTGAATTTTAGCAGATG  
AGATGGGTCTTGGAAAGACAGTGGAGGTTTTGGCTCTGATTCTGACACATACTCGACAAGATGTCAAGCA  
AGATGCTCTCACTCTCCGAGGGAAAAGTGGTGAATTTTTATTCCGTCACATTATTTTGGAGGAAAA  
CTGAAAAAGACAGAAATCCAGAATATCGAATTTGAACCAAAAGAAAAAGTTCAATGCCCTCTACACGTG  
TGATGATACTGACAGCTGTGAAAGAAATGAATGGAAAAAAGGAGTGCCATCCTTTCCATCTATAAGTA  
TGTCAGTTCTATATAGATACGATGTTCAACGGAACAGGAGTCTTTTGAACGGATGCTGAAATGTTTA



[View online »](#)

ATTTTTGAAGGTCTCGTGAACAGATCAAAGGCCATGGTTTTCTGGGACTTTTACATTGGGAAAGAATT  
 ACAAGGAAGAGGATATATGTGATAAAACAAAAAGCAGGCAGTAGGGAGTCCAAGGAAAATTCAGAAAAGA  
 AACTAGAAAATCAGGGAACAAGGACACAGATTCTGAATACTTGCCATCAGACACCTCTGATGATGATGAT  
 GATCCTTACTATTATTATAAGTCCAGGAGAAAATCGCAGTAAATTGAGGAAAAAGCTTGTCCATCCA  
 CAAAAAAGGAAAAAGTCAACCATTTATCAATCCCATTACAAGGTCAGTGTCCAGCTACTAGCGACTC  
 TGGAACTGATGTTGCTATGTCTAAAAGTACATGTATCTCTGAATTCACCAAGAACATGAAACAGAG  
 GACTGTGCTGAATCTCTAAATCATGCTGATGATGATGATGATGATGATGATGATGATGATGATGATGATG  
 CCTCTGATTACCCTTTGAGTGTATATGTGGTGAACCTTGATCAGATAGATCGTAAGCCTCGTGTCAATG  
 CCTGAAGTGTACCTGTGGCAACATGCAAAGTGTGTAATTATGATGAGAAAAATCTGAAGATCAAGCCT  
 TTTTACTGCCCCACTGCCTTGTGCAATGGAACCAAGTGTCAACAAGAGCAACTCTGATCATCTCTCCAA  
 GTTCCATCTGTCACCAGTGGGTGGATGAGATCAACAGGCATGTGAGGTCGTATCTCTTCGAGTCTTGGT  
 ATATCAAGGAGTGAAGAAAGATGGCTTTTTACAACCTCATTTTTTGGCAGAACAGGATATAGTTATCATT  
 ACCTATGATGACTGCGTTCAGAATTAATTATGTCGATATCCCACATAGCAATAGTGGAGTGGGCGTC  
 GCCTACGGAACAGAGCGCTATATGGCTATCCCAGCCCCCTGGTAGCTGTGGAGTGGTGGAGGATCTG  
 CCTTGATGAAGCTCAGATGGTTGAGTGTCCACAGTAAAAGCTGCAGAAATGGCCACGCTTTGAGTGGG  
 ATTAATCGATGGTGTATCAGTGGCACTCCAGTACAGAGAGGATTAGAGGATCTTTTTGGGTTAGTGGTCT  
 TTCTTGGTATTGAACCTTACTGTGTCAAACACTGGTGGGTTTCGACTTCTCTATCGGCCTTACTGCAAGAA  
 GAATCCTCAGCATCTCTACAGCTTATTGCCAAGATACTGTGGAGGTCTGCAAAGAAAGATGTGATTGAC  
 CAAATCCAAATACCACCACAAACCGAAGAAATACACTGGCTCCACTTTTCTCCAGTGGAAAGGCATTTCT  
 ATCACCCTCAGCATGAGGTGTGCTGCCAGGATGTGGTGGTAAAACCTCAGGAAGATTTCTGACTGGGCTCT  
 GAAGCTCAGCAGCTAGACAGAAGGACTGTCACCTCTATCCTGTATCCATTGCTGAGGCTCAGACAGGCC  
 TGCTGTCAACCCACAGGCTGTTGCTGGAGAGTCTTGGCACTCAGGAGGAGTGTGGAAGGAGCAGTGTG  
 TGCTGACATCTTTCAGAGAAGAAATGTGGAAGTGAATGTGAAGAAGCAGTGTGGAAGGAGTGTGGAAG  
 CAATGGCTTAGCAGGCATTCATATTATTAAGGTGAGTATGCCTTGGCAGCAGAATTGTACAGAGAAGTG  
 TTGCGCTCCTCGGAGGAACACAAAGGAAAACTCAAACCTGATTCACTTCAAAGACTTCATGCTACCCATA  
 ACTTGATGGAATTGTTGATAGCCAGGCACCCAGGGATACCACCTACCTTGCCTGATGGCCGACTTGAGGA  
 AGAGGCCAAACAGCTGCGAGAGCACTACATGAGCAAGTGAATACAGAAGTTGCTGAAGCCAGCAAGCT  
 TTATATCCTGTGCAGCAGACCATCCATGAGCTTCAAAGAAAGATTCATTCTAATTCTCCTGGTGGCTAA  
 ATGTGATCCACAGAGCAATAGAATTTACTATTGATGAGGAGCTAGTTCAGCGAGTGCAGAAATGAAATAAC  
 CAGCAACTACAAGCAACAACTGGCAAGCTTTCTATGTCAGAGAAGTCCGCTGATGTCAGAGGCTTTCAG  
 TTCTTACTTACAACACAAATGGAAGAGCTAAATAAATGCCAGAAGCTAGTAAGAGAGGCTGTAAAAACC  
 TGGAGGGACCTCCATCTCGTAATGTTATTGAGTCTGCAACAGTCTGTACCTCCGACCAGCCAGACTTCC  
 TCTCAACTGCTGTGCTTTTTGTAAGCTGATGAATTGTTACAGAGTATGAATCAAAGCTATTTTCCAAC  
 ACAGTCAAAGGCCAGACTGCAATATTTGAGGAGATGATAGAAGATGAAGAAGGACTGGTGGATGATCGAG  
 CACCTACCACCACCCGGGCTCTCTGGGCAATAAGTGAAGCAGAGCGATCTATGAAAGCAATACTATCATT  
 TGCAAAATCACATAGGTTTGTGTTGAATTTGTTGATGAAGGAAGCACTTCAATGGATCTCTTGAAGCA  
 TGGAAGAAGGAATATAAGTTGCTTCATGAATATTGGATGGCTCTGAGGAATCGTGTGTCTGCTGTTGATG  
 AACTTGCAATGGCTACAGAACGACTAAGAGTGCCTGATCCTAGGGAGCCAAAGCCATAATCCGCTGTTCT  
 TCATATCATTGAACCACATGAGGTAGAACAAAACCGAATAAACTACTAAATGATAAAGCTGTTGCTACA  
 TCACAGCTTCAGAAAAAAGCTTGGCAGCTTCTTTACCTAACTAATTTGGAGAAGTCTCAAGATAAAACAT  
 CGGGAGGTGTTAATCCAGAACCTTGCCCAATCTGTGCTCGACAGCTAGGAAAAACAGTGGGCGTACTGAC  
 CTGTGGTCACTGTTTCTGTAATGAATGCAATTTCTATAATTATTGAACAATACAGCGTGGGATCTCACAGA  
 AGCTCCATTAAGTGTGCAATCTGCCGCCAGACCACATCTCAGAAAGAAATCTCGTATGCTTTACCTCAG  
 AGAAAGCAAACAGGAGGAGGACATCCCTGTGAAGGGCAGCCATTCTACAAAAGTGAAGCTGTGGTCAG  
 AACTCTGATGAAAATACAGCTTAGAGATCCAGGGCCAAAGCACTCGTTTTCTCAACGTGGCAAGATGTA  
 TTAGATATTTTCAAAGCTCTTACTGACAACAACATGGAATTTGCACAAATCAGTCGTGTTAAGACAT  
 TTCAGGAGAACCCTTTCAGCATTTAAACGTGATCCCAAAATCAATATTTTGTGCTGCCCCGTCACACAGG  
 TTCTAATGGATTAATATCATTGAAGCAACTCATGTTCTTGGTGGAGCCCATATTGAACCTGCCCAT  
 GAGCTTACAGCCATAGGGAGGGTGCACCGAATTGGACAGACAAAACCTACTATTGTACACAGATTCTTAA  
 TTAAGGCAACAAATAGAAGAAAGAAATGCAGGCAATGCTGAAAAGTCTGAGAGAAGTACACGAACTCATC  
 AGCAAAGCATTACAGAGCCTCTGTCTTACTGTGGCTGACCTGGCAGACCTATTTACAAAGAAACTGAA  
 GAGCTTGAA

ACGCGTACGCGGCCGCTCGAG - GFP Tag - GTTTAA

**Protein Sequence:**

>RG212767 representing NM\_001042683  
 Red=Cloning site Green=Tags(s)

MSSRRKRAPPVVRVDEEKRQLHWNMHEDRRNEPIIISDDDEQPCPGSDTSSAHYIILSDSLKEEVAHRDK  
 KRCSKVVVFSKPIEKEETVGFIFPLSVKLNIVISPYHFDNSWKAFLGELTLQLLPAQSLIENFSERSITL  
 MSSESSNQFLIYVHSGKEDVEKQKKEPMSICDKGILVSSFSGEMLEDLGLWQKKRRIKLYQKPEGNHII  
 KVGIYLLLEAGLAKLDFLSDANSRMKFKFNLMKKVMEKLHNSIIPDVLEEDDPESEPEGQDIDELHYFV  
 KQTHQQETQSIQVDVQHPALIPVLRPYQREAVNWMLQQECFRSSPATESALHFLWREIVTSEGLKLYNPNP  
 YTGCIIREYPNSGPQLLGGILADEMGLKGTVEVLALILTHTRQDVKQDALTLPEGKVVNYFIPSHYFGGK  
 LKKEIQNIIEFEPKEKVCPPTRVMILTAVKEMNGKKGVSILSIYKYVSSIYRYDVQRNRSLLKRMLKCL  
 IFEGLVKQIKGHGFSGTFTLGKNYKEEDICDKTKKQAVGSPRKIQKETRSGNKTDSSEYLPDSDTSDDD  
 DPYYYYKSRNRSLRKLKLPSTKKGKSPQFINPDSQGHCPATSDSGITDVAMSKSTCISEFNQEHETE  
 DCAESLNHADSVPSPNTMSPFNTSDYRFECICGELDQIDRKPVRVQCLKCHLWQHAKCVNYDEKLNLIKIP  
 FYCPHCLVAMEPVSTRATLIISPSICHQWVDEINRHVRSSSLRVLVYQGVKKGDFLQPHFLAEQDIVII  
 TYDVLRSELNYVDIPHSNSEDGRRLRNQKRYMAIPSPLVAVEWWRICLDEAQMVECPTVKAEMAQRLSG  
 INRWICISGTPVQRGLDFGLVVFLGIEPYCVKHWVRLLYRPYCKKNPQHLYSFIAKILWRSKAKDVID  
 QIQIPPQTTEIHWLHFSPVERHFYHRQHEVCCQDVVVKLRKISDWALKLSSLDRTVTISILYPLRLRQA  
 CCHPQAVRGEFLPLQKSTMTMEELLTSLQKKCGTECEEHRQLVCALNGLAGIHIKGEYALAAELYREV  
 LRSSEEHKGLKTDSLQRLHATHNLMELLIARHPGIPPTLRDGRLEEEAKQLREHYMSKCNTEVAEAQQA  
 LYPVQQTIELQRKIHSNSPWWLVNVIHRAIEFTIDEELVQVRVNEITSNYKQQTGKLSMSEKFRDCRGLQ  
 FLLTTQMEELNKCQKLVREAVKNLEGPSPRNIVIESATVCHLRPARLPLNCCVFCKADELFTYEYKLSFSN  
 TVKGQTAIFEEMIEDEEGLVDDRAPTTTRGLWAISETERSMKAILSFAKSHRFDVEFVDEGSTMDLFEA  
 WKKEYKLLHEYWMALRNRVSAVDELAMATERLRVRDPREPKPNPPVLHIIEPHEVEQNRKLLNDKAVAT  
 SQLQKKGQLLYLTNLEKSDKTSGGVNPEPCPCARQLGKQWAVLTCGHFCFCNECISIIIEQYVSGSHR  
 SSIKCAICRQTTSHKEISYVFTSEKANQEEDIPVKGSHSTKVEAVVRTLMKIQLRDPGAKALVFSTWQDV  
 LDIIISKALTDNNMEFAQISRVKTFQENLSAFKRDPQINILLPLHTGSNGLTIIIEATHVLLVEPILNPAH  
 ELQAIGRVHRIGQTKPTIVHRFLIKATIEERMQAMLKTAERSHTNSSAKHSEASVLTVADLADLFTKETE  
 ELE

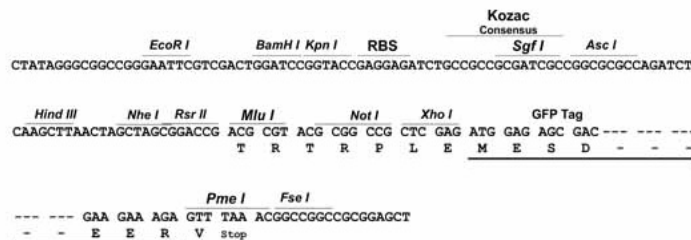
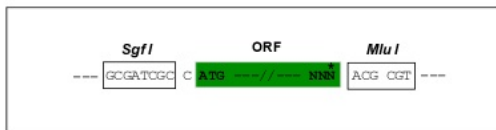
TRTRPLE - GFP Tag - V

**Restriction Sites:**

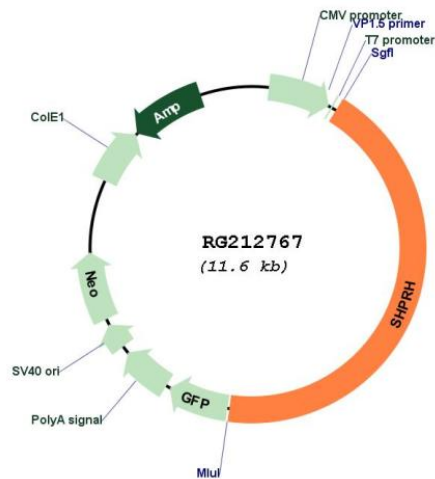
SgfI-MluI

**Cloning Scheme:**

Cloning sites used for ORF Shuttling:



Plasmid Map:



ACCN: NM\_001042683

ORF Size: 5049 bp

OTI Disclaimer: The molecular sequence of this clone aligns with the gene accession number as a point of reference only. However, individual transcript sequences of the same gene can differ through naturally occurring variations (e.g. polymorphisms), each with its own valid existence. This clone is substantially in agreement with the reference, but a complete review of all prevailing variants is recommended prior to use. [More info](#)

OTI Annotation: This clone was engineered to express the complete ORF with an expression tag. Expression varies depending on the nature of the gene.

<b>Components:</b>	The ORF clone is ion-exchange column purified and shipped in a 2D barcoded Matrix tube containing 10ug of transfection-ready, dried plasmid DNA (reconstitute with 100 ul of water).
<b>Reconstitution Method:</b>	<ol style="list-style-type: none"><li>1. Centrifuge at 5,000xg for 5min.</li><li>2. Carefully open the tube and add 100ul of sterile water to dissolve the DNA.</li><li>3. Close the tube and incubate for 10 minutes at room temperature.</li><li>4. Briefly vortex the tube and then do a quick spin (less than 5000xg) to concentrate the liquid at the bottom.</li><li>5. Store the suspended plasmid at -20°C. The DNA is stable for at least one year from date of shipping when stored at -20°C.</li></ol>
<b>RefSeq:</b>	<a href="#">NM_001042683.3</a>
<b>RefSeq Size:</b>	7345 bp
<b>RefSeq ORF:</b>	5052 bp
<b>Locus ID:</b>	257218
<b>UniProt ID:</b>	<a href="#">Q149N8</a>
<b>Cytogenetics:</b>	6q24.3
<b>Protein Families:</b>	Druggable Genome
<b>Gene Summary:</b>	SHPRH is a ubiquitously expressed protein that contains motifs characteristics of several DNA repair proteins, transcription factors, and helicases. SHPRH is a functional homolog of <i>S. cerevisiae</i> RAD5 (Unk et al., 2006 [PubMed 17108083]).[supplied by OMIM, Mar 2008]