

Product datasheet for **RG212764**

ARSI (NM_001012301) Human Tagged ORF Clone

Product data:

Product Type:	Expression Plasmids
Product Name:	ARSI (NM_001012301) Human Tagged ORF Clone
Tag:	TurboGFP
Symbol:	ARSI
Synonyms:	ASI; SPG66
Mammalian Cell Selection:	Neomycin
Vector:	pCMV6-AC-GFP (PS100010)
E. coli Selection:	Ampicillin (100 ug/mL)



[View online »](#)

ORF Nucleotide Sequence:

>RG212764 representing NM_001012301
 Red=Cloning site Blue=ORF Green=Tags(s)

TTTTGTAATACGACTCACTATAGGGCGGCCGGGAATTCGTCGACTGGATCCGGTACCGAGGAGATCTGCC
 GCC**CGGATCGCC**

ATGCACACCCCTACTGGCTTCTCTCTGGTCAGCCTGCTCAGCTTCGGCTACCTGTCTGGGACTGGGCCA
 AGCCGAGCTTCGTGGCCACGGGCCCGGGGAGGCTGGCGAGCAGCCCTCGGCCGCTCCGCCCCAGCCTCC
 CCACATCATCTTCATCCTCACGGACGACCAAGGCTACCACGACGTGGGCTACCATGGTTCAGATATCGAG
 ACCCTACGCTGGACAGGCTGGCGGCCAAGGGGTCAAGTTGGAGAATTATTACATCCAGCCCATCTGCA
 CGCCTTCGCGGAGCCAGCTCCTCACTGGCAGGTACCAGATCCACACAGGACTCCAGCATTCCATCATCCG
 CCCACAGCAGCCCAACTGCCTGCCCTGGACCAGGTGACACTGCCACAGAAGCTGCAGGAGGCAGTTAT
 TCCACCCATATGGTGGGCAAGTGGCACCTGGGCTTCTACCGAAGGAGTGTCTGCCACCCGTCGGGGCT
 TCGACACCTTCCTGGGCTCGCTCAGGGCAATGTGGACTATTACCTATGACAACGTGATGGCCAGG
 CGTGTGGGCTTCGACCTGCACGAGGTTGAGAATGTGGCTGGGGCTCAGCGGCCAGTACTCCACTATG
 CTTTACGCCCAGCGGCCAGCCATATCCTGGCCAGCCACAGCCCTCAGCGTCCCCTTCTCCTATATGTGG
 CCTTCCAGGCAGTACACACACCCCTGCAGTCCCCTCGTGAGTACCTGTACCGCTACCGCACCATGGGCAA
 TGTGGCCCGCGGAAGTACGCGGCCATGGTGACCTGCATGGATGAGGCTGTGCGCAACATCACCTGGGCC
 CTCAAGCGCTACGGTTTCTACAACAACAGTGTCACTCATCTTCTCCAGTGACAATGGTGGCCAGACTTTCT
 CGGGGGCAGCAACTGGCCGCTCCGAGGACGCAAGGGCACTTATTGGGAAGGTGGCGTGGGGCCCTAGG
 CTTTGTCCACAGTCCCCTGCTCAAGCGAAAGCAACGGACAAGCCGGGCACTGATGCACATCACTGACTGG
 TACCCGACCCTGGTGGTCTGGCAGTGGTACCACCTCAGCAGCCGATGGGCTAGATGGCTACGACGTGT
 GGCCGGCCATCAGCGAGGCGCCGCTCACCACGACGAGATCCTGCACAACATTGACCCACTTACAA
 CCATGCCCAGCATGGCTCCCTGGAGGGCGCTTTGGCATCTGGAACACCGCCGTCAGGCTGCCATCCGC
 GTGGGTGAGTGAAGCTGCTGACAGGAGACCCCGCTATGGCGATTGGATCCCACCGCAGACACTGGCCA
 CCTTCCGGGTAGCTGGTGAACCTGGAACGAATGGCCAGTGTCCGCCAGGCCGTGTGGCTCTTCAACAT
 CAGTGCTGACCCTTATGAACGGGAGGACCTGGCTGGCCAGCGCCCTGATGTGGTCCGCACCCTGCTGGCT
 CGCCTGGCCGAATATAACCGCACAGCCATCCCGGTACGCTACCCAGTGAGAACCCCGGGCTCATCCTG
 ACTTTAATGGGGTGCTTGGGGCCCTGGGCCAGTGATGAGGAAGAGGAGGAAGAGGAAGGGAGGGCTCG
 AAGCTTCTCCCGGGTCTGCGAAGAAAAATGCAAGATTTGCAAGCTTCGATCCTTTTTCCGTAAACTC
 AACACCAGGCTAATGTCCAACGGATC

ACGCGTACGCGGCCGCTCGAG - GFP Tag - GTTTAA

Protein Sequence:

>RG212764 representing NM_001012301
 Red=Cloning site Green=Tags(s)

MHTLTGFSLVSLLSFGYLSWDWAKPSFVADGPGAGEQPSAAPPQPHIIFILTDQGYHVDVGYHGSIDIE
 TPTLDRLAAKGVKLENYIQPICTPSRSQLLTGRYQIHTGLQHSIIRPQQPNCLPLDQVTLPLQKLQEAGY
 STHMVGKWHLGFYRKECLPTRRGFDLFLGSLTGNVDYYTYDNCDDGPGVCGFDLHEGENVAWGLSGQYSTM
 LYAQRASHILASHSPQRPLFLYVAFQAVHTPLQSPREYLRYRTMGNVARRKYAAMVTCMDEAVRNITWA
 LKRYGFYNNSVIIFSSDNGGQTFSGGSNWPLRGRKGTWEGGVRGLGFVHSPLLKRKQRTSRALMHITDW
 YPTLVGLAGGTSAADGLDGYDVWPAISEGRASPRTEILHNIDPLYNHAQHSLEGFGIWNQAVQAAIR
 VGEWKLLTGDPGYGDWIPPQTLATFPGSWWNLERMASVRQAVWLFNISADPYEREDLAGQRPDVVRTLLA
 RLAEYNRTAIPVRYPAENPRAHPDFNGGAWGPWASDEEEEEEEGRARSFSRGRKKKCKICKLRSFRKLN
 NTRLMQRI

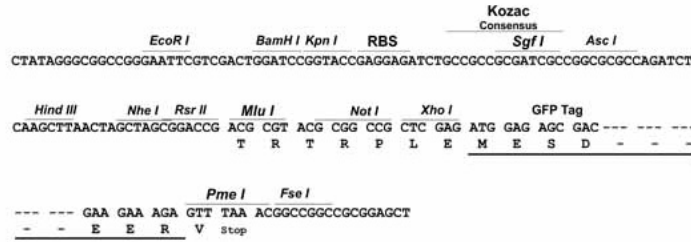
TRTRPLE - GFP Tag - V

Restriction Sites:

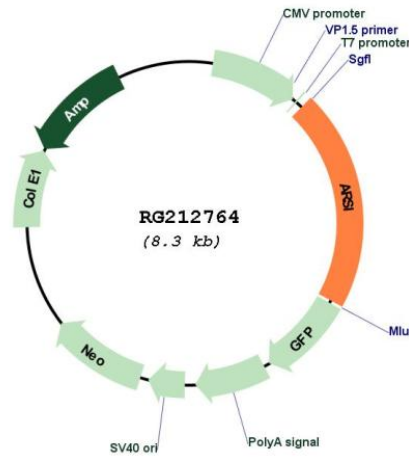
Sgfl-MluI

Cloning Scheme:

Cloning sites used for ORF Shutting:



Plasmid Map:



ACCN: NM_001012301
 ORF Size: 1707 bp

OTI Disclaimer:	The molecular sequence of this clone aligns with the gene accession number as a point of reference only. However, individual transcript sequences of the same gene can differ through naturally occurring variations (e.g. polymorphisms), each with its own valid existence. This clone is substantially in agreement with the reference, but a complete review of all prevailing variants is recommended prior to use. More info
OTI Annotation:	This clone was engineered to express the complete ORF with an expression tag. Expression varies depending on the nature of the gene.
Components:	The ORF clone is ion-exchange column purified and shipped in a 2D barcoded Matrix tube containing 10ug of transfection-ready, dried plasmid DNA (reconstitute with 100 ul of water).
Reconstitution Method:	<ol style="list-style-type: none">1. Centrifuge at 5,000xg for 5min.2. Carefully open the tube and add 100ul of sterile water to dissolve the DNA.3. Close the tube and incubate for 10 minutes at room temperature.4. Briefly vortex the tube and then do a quick spin (less than 5000xg) to concentrate the liquid at the bottom.5. Store the suspended plasmid at -20°C. The DNA is stable for at least one year from date of shipping when stored at -20°C.
RefSeq:	NM_001012301.1 , NP_001012301.1
RefSeq Size:	1710 bp
RefSeq ORF:	1710 bp
Locus ID:	340075
UniProt ID:	Q5FYB1
Cytogenetics:	5q32
Protein Families:	Druggable Genome, Secreted Protein
Gene Summary:	This gene encodes a protein that belongs to a large family of sulfatases that hydrolyze sulfate esters and sulfamates. Members of this family play a role in several cellular processes, including hormone synthesis, cell signaling in development and degradation of macromolecules. The protein encoded by this gene is thought to be secreted, and to function in extracellular space. [provided by RefSeq, Jul 2016]