

Product datasheet for **RG212756**

GPR7 (NPBWR1) (NM_005285) Human Tagged ORF Clone

Product data:

Product Type:	Expression Plasmids
Product Name:	GPR7 (NPBWR1) (NM_005285) Human Tagged ORF Clone
Tag:	TurboGFP
Symbol:	GPR7
Synonyms:	GPR7
Mammalian Cell Selection:	Neomycin
Vector:	pCMV6-AC-GFP (PS100010)
E. coli Selection:	Ampicillin (100 ug/mL)
ORF Nucleotide Sequence:	>RG212756 representing NM_005285 Red=Cloning site Blue=ORF Green=Tags(s)

TTTTGTAATACGACTCACTATAGGGCGCCGGGAATTCGTCGACTGGATCCGGTACCGAGGAGATCTGCC
GCC**CGATCGCC**

ATGGACAACGCCTCGTTCTCGGAGCCCTGGCCCGCAACGCATCGGGCCCGACCCGGCGCTGAGCTGCT
CCAACGCGTCGACTCTGGCGCCGCTGCCGGCGCCGCTGGCGGTGGCTGTACCAAGTTGTCTACGCGGTGAT
CTGCGCCGTGGGTCTGGCGGGCAACTCCGCCGTGCTGTACGTGTTGCTGCGGGCGCCCGCATGAAGACC
GTCACCAACCTGTTTCATCCTCAACCTGGCCATCGCCGACGAGCTCTTACGCTGGTGTGCCATCAACA
TCGCCGACTTCTGCTGCGGCAGTGGCCCTTCGGGGAGCTCATGTGCAAGCTCATCGTGGCTATCGACCA
GTACAACACCTTCTCCAGCCTCTACTTCCACCGTCATGAGCGCCGACCCTACCTGGTGGTGTGGCC
ACTGCGGAGTCGCGCCGGTGGCCGGCCACCTACAGCGCCGCGCGCGGTGAGCCTGGCCGTGTGGG
GGATCGTCACACTCGTCGTGCTGCCCTTCGAGTCTTCGCCCCGCTAGACGACGAGCAGGGCCGGCGCCA
GTGCGTGTAGTCTTCCGACGCCGAGGCCTTCTGGTGGCGCGGAGCCGCCTTACACGCTCGTGTG
GGCTTCGCCATCCCCGTGTCCACCATCTGTGTCCTCTATACCACCTGCTGTGCCGGTGCATGCCATGC
GGCTGGACAGCCACGCCAAGGCCCTGGAGCGGCCAAGAAGCGGGTGACCTTCTGGTGGTGGCAATCCT
GGCGGTGTGCTCCTCTGCTGGACGCCCTACCACCTGAGCACCCTGGTGGCGCTACCACCGACCTCCCG
CAGACGCCGCTGGTACGCTATCTCCTACTTCATCACCAGCCTGAGCTACGCCAACAGCTGCCTCAACC
CCTTCTCTACGCCTTCTGGACGCCAGCTTCCGACGGAACCTCCGCCAGCTGATAACTTGCCGCGCGGC
AGCC

AG**CGGACCG**ACGCGTACGCGGCCGCTCGAG - GFP Tag - GTTTAA



[View online »](#)

Protein Sequence: >RG212756 representing NM_005285
Red=Cloning site Green=Tags(s)

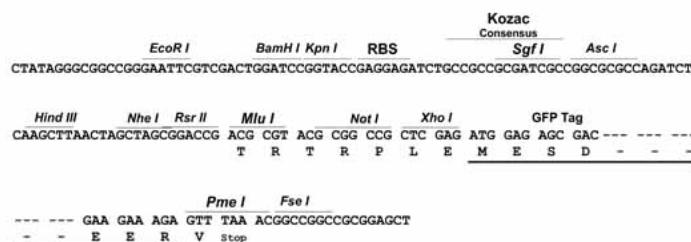
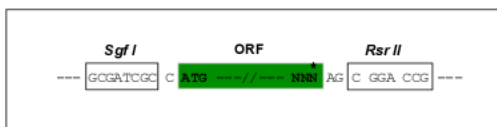
MDNASFSEPWPANASGPDPALSCSNASTLAPLPAPLAVAVPVVYAVICAVGLAGNSAVLYVLLRAPRMKT
 VTNLFILNLAIADELFTLVLPINIADFLLRQWPFGELMCKLIVAIDQYNTFSSLYFLTVMASADRYLVVLA
 TAESRRVAGRTYSAARAVSLAVWGIIVTLVVLPAVFAVRLDDEQGRRCVLFVFPQPEAFWWRASRLYTLVL
 GFAIPVSTICVL YTTLLCRLHAMRLDSHAKALERAKRVTFVVAIVLAVCLLCWTPYHLSTVVALTTDLP
 QTPLVIAISYFITSLSYANSCLNPFLYAFLDASFRRNLRQLITCRAAA

SGPTRRRLE - GFP Tag - V

Restriction Sites: SgfI-RsrII

Cloning Scheme:

Cloning sites used for ORF Shuttling:



ACCN: NM_005285

ORF Size: 984 bp

OTI Disclaimer: The molecular sequence of this clone aligns with the gene accession number as a point of reference only. However, individual transcript sequences of the same gene can differ through naturally occurring variations (e.g. polymorphisms), each with its own valid existence. This clone is substantially in agreement with the reference, but a complete review of all prevailing variants is recommended prior to use. [More info](#)

OTI Annotation: This clone was engineered to express the complete ORF with an expression tag. Expression varies depending on the nature of the gene.

Components: The ORF clone is ion-exchange column purified and shipped in a 2D barcoded Matrix tube containing 10ug of transfection-ready, dried plasmid DNA (reconstitute with 100 ul of water).

Reconstitution Method:

1. Centrifuge at 5,000xg for 5min.
2. Carefully open the tube and add 100ul of sterile water to dissolve the DNA.
3. Close the tube and incubate for 10 minutes at room temperature.
4. Briefly vortex the tube and then do a quick spin (less than 5000xg) to concentrate the liquid at the bottom.
5. Store the suspended plasmid at -20°C. The DNA is stable for at least one year from date of shipping when stored at -20°C.

RefSeq: [NM_005285.5](#)

RefSeq Size: 987 bp

RefSeq ORF: 987 bp

Locus ID: 2831

UniProt ID: [P48145](#)

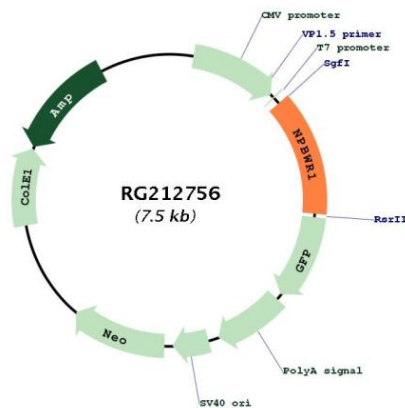
Cytogenetics: 8q11.23

Protein Families: Druggable Genome, GPCR, Transmembrane

Protein Pathways: Neuroactive ligand-receptor interaction

Gene Summary: Interacts specifically with a number of opioid ligands. Receptor for neuropeptides B and W, which may be involved in neuroendocrine system regulation, food intake and the organization of other signals. Has a higher affinity for neuropeptide B.[UniProtKB/Swiss-Prot Function]

Product images:



Circular map for RG212756