

## Product datasheet for **RG212754**

### CD163 (NM\_203416) Human Tagged ORF Clone

#### Product data:

Product Type:	Expression Plasmids
Product Name:	CD163 (NM_203416) Human Tagged ORF Clone
Tag:	TurboGFP
Symbol:	CD163
Synonyms:	M130; MM130; SCARI1
Mammalian Cell Selection:	Neomycin
Vector:	pCMV6-AC-GFP (PS100010)
E. coli Selection:	Ampicillin (100 ug/mL)
ORF Nucleotide Sequence:	>RG212754 representing NM_203416 Red=Cloning site Blue=ORF Green=Tags(s)

TTTTGTAATACGACTCACTATAGGGCGGCCGGAATTCGTCGACTGGATCCGGTACCGAGGAGATCTGCC  
GCC**CGATCGCC**

ATGAGCAAACCTCAGAATGGTGCTACTTGAAGACTCTGGATCTGCTGACTTCAGAAGACATTTTGTCAACT  
TGAGTCCCTTACCATTACTGTGGTCTTACTTCTCAGTGCCTGTTTTGTCACCAGTTCTCTTGGAGGAAC  
AGACAAGGAGCTGAGGCTAGTGGATGGTAAAACAAGTGTAGCGGGAGAGTGAAGTAAAGTCCAGGAG  
GAGTGGGAACGGTGTGTAATAATGGCTGGAGCATGGAAGCGGTCTCTGTGATTTGTAACCAGCTGGGAT  
GTCCAACCTGCTATCAAAGCCCTGGATGGGCTAATTCAGTGCAGTTCTGGACGCATTTGGATGGATCA  
TGTTTTCTGTCGTGGGAATGAGTCAGCTCTTTGGGATTGCAAACATGATGGATGGGAAAGCATAGTAAC  
TGTAACCAACAAGATGCTGGAGTGACCTGCTCAGATGGATCCAATTTGAAAATGAGGCTGACCGGTG  
GAGGGAATATGTGTTCTGGAAGAATAGAGATCAAATCCAAGGACGGTGGGAAACAGTGTGTGATGATAA  
CTTCAACATAGATCATGCATCTGTCAATTTGTAGACAACCTGAATGTGGAAGTGTGTGATGATGATAA  
TCATCTAATTTGGAGAAGGCTCTGGACCAATCTGTTTGTGATGATCTTATGCAACGGAATGAGTCAG  
CTCTCTGGAACGCAAACATCAAGGATGGGAAAGCATAACTGTGATCATGCTGAGGATGCTGGAGTGAT  
TTGCTCAAAGGGAGCAGATCTGAGCCTGAGACTGGTAGATGGAGTCACTGAATGTTCCAGGAAGATTAGAA  
GTGAGATTTCAAAGGAGAATGGGGACAATATGTGATGACGGCTGGGACAGTTACGATGCTGCTGTGGCAT  
GCAAGCAACTGGGATGTCCAACCTGCCGTACAGCCATTGGTTCGAGTTAACGCCAGTAAGGGATTTGGACA  
CATCTGGCTTGACAGCGTTTCTTGCCAGGGACATGAACCTGCTATCTGGCAATGTAACACCATGAATGG  
GAAAAGCATTATTGCAATCACAATGAAGATGCTGGCGTGACATGTTCTGATGGATCAGATCTGGAGCTAA  
GACTTAGAGGTGGAGGCAGCCGCTGTGCTGGGACAGTTGAGGTGGAGATTAGAGACTGTTAGGGAAGGT  
GTGTGACAGAGGCTGGGACTGAAAGAAGCTGATGTGGTTTGCAGGCAGCTGGGATGTGGATCTGCACTC  
AAAACATCTTATCAAGTGTACTCCAAAATCCAGGCAACAAACACATGGCTGTTTCTAAGTAGCTGTAACG  
GAAATGAAACTTCTCTTTGGGACTGCAAGAAGTGGCAATGGGGTGGACTTACCTGTGATCACTATGAAGA  
AGCCAAAATTACCTGCTCAGCCACAGGGAACCCAGACTGGTTGGAGGGACATTCCTGTTCTGGACGT



```

GTTGAAGTGAAGCATGGTGACACGTGGGGCTCCATCTGTGATTCCGACTTCTCTCTGGAAGCTGCCAGCG
TTCTATGCAGGAATTACAGTGTGGCACAGTTGTCTCTATCCTGGGGGAGCTCACTTTGGAGAGGGAAA
TGGACAGATCTGGGCTGAAGAATTCAGTGTGAGGGACATGAGTCCCATCTTCACTCTGCCAGTAGCA
CCCCGCCAGAAGAACTTGTAGCCACAGCAGGGATGTTGGAGTAGTCTGCTCAAGATACACAGAAATTC
GCTTGGTGAATGGCAAGACCCCGTGTGAGGGCAGAGTGGAGCTCAAACGCTTGGTGCCTGGGGATCCCT
CTGTAACCTCTCACTGGGACATAGAAGATGCCATGTTCTTTGCCAGCAGCTTAAATGTGGAGTGGCCCTT
TCTACCCAGGAGGAGCACGTTTTGGAAAAGGAAATGGTCAGATCTGGAGGCATATGTTTCACTGCATG
GGACTGAGCAGCACATGGGAGATTGCTCTGTAAGTCTAGGTGCTTATTATGCTTTCAGAGCAAGT
GGCCTCTGTAATCTGCTCAGGAAACAGTCCCAAACACTGTCCTCGTGAATTCATCGTCTTTGGGCCCA
ACAAGGCTACCATCCAGAAGAAAGTGTGTGGCCTGCATAGAGAGTGGTCAACTTCGCTGGTAAATG
GAGGAGTGTGCTGGGAGAGTAGAGATCTATCATGAGGGCTCCTGGGGACCATCTGTGATGACAG
CTGGGACCTGAGTGTGCCACGTGTTTGCAGACAGTGGGCTGTGGAGAGGCCATTAAATGCCACTGGT
TCTGCTCATTTTGGGAAGGAACAGGGCCATCTGGCTGGATGAGATGAAATGCAATGGAAAAGAATCCC
GCATTTGGCAGTCCATTACACGGCTGGGGCAGCAAATTCAGGCACAAGGAGGATGCGGGAGTTAT
CTGCTCAGAATTCATGTCTCTGAGACTGACCAGTGAAGCCAGCAGAGAGGCTGTGCAGGGCGTCTGGAA
GTTTTTACAATGGAGCTTGGGGCACTGTTGGCAAGAGTAGCATGTCTGAAACCACTGTGGGTGTGGTGT
GCAGGCAGCTGGGCTGTGCAGACAAAGGAAAAATCAACCCTGCATCTTGTAGACAAGGCCATGTCCATTCC
CATGTGGTGGACAATGTTCAAGTGTCCAAAAGGACCTGACACGCTGTGGCAGTGCCCATCATCTCCATGG
GAGAAGAGACTGGCCAGCCCTCGGAGGAGACCTGGATCACATGTGACAACAAGATAAGACTTCAGGAAG
GACCCACTTCTGTTCTGGACGTGTGGAGATCTGGCATGGAGGTTCTGGGGACAGTGTGTGATGACTC
TTGGGACTTGGACGATGCTCAGTGGTGTGTCAACAACTGGCTGTGGTCCAGCTTTGAAAGCATTCAA
GAAGCAGAGTTTGGTCAAGGGACTGGACGATATGGCTCAATGAAGTGAAGTGAAGGGAATGAGTCTT
CCTTGTGGGATTGCTCCTGCCAGACGCTGGGGCCATAGTGAAGTGTGGGCACAAGGAAGCAGTGAAG
TTGCACAGATATTTCAAGTGCAGAAAACCCACAAAAGCCACAACAGGTGCTCATCCCGTCACTGATCC
TTTATTGCAGTCCGGATCCTTGGGTTGTTCTGTTGGCCATTTTCTGTCGATTATTCTTCTTACTAAAA
AGCGAAGACAGAGACAGCGGCTTGCAGTTTCTCAAGAGGAGAGAACTTAGTCCACCAAATTCATACCG
GGAGATGAATTCTTGCCTGAATGCAGATGATCTGGACCTAATGAATCCTCAGGAGGCCATTCTGAGCCA
CAC
    
```

AGCGGACCGACGCGTACGCGGCCGCTCGAG - GFP Tag - GTTTAA

**Protein Sequence:**

>RG212754 representing NM\_203416  
 Red=Cloning site Green=Tags(s)

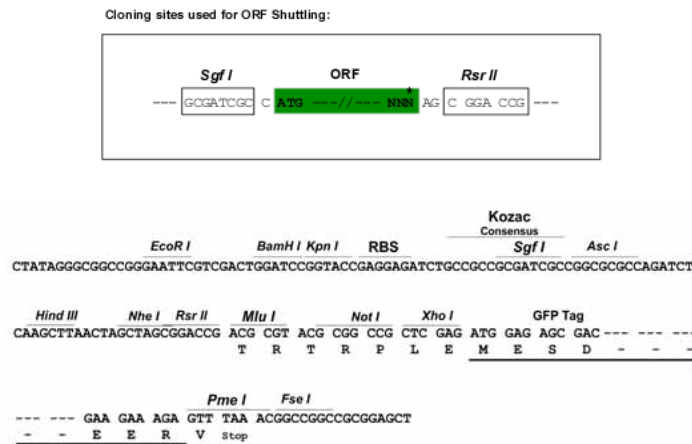
```

MSKLRMVLLEDSGSADFRHFVNLSPFTITVVLVLLSACFVSSLGGTDKELRLVDGENKCSGRVEVKVQE
EWGTVCNNGWSMEAVSVICNQLGCPTAIKAPGWANSSAGSGRIWMDHVSCRGNESALWDCKHDGKHSN
CTHQQDAGVTCSDGSNLEMLRTRGGNMSCGRIEIKFQGRWGTVCDDNFNIDHASVICRQLECGSAVSFSG
SSNFGEESGPIWFDDLICNGNESALWNCKHQGWGKHNCDAEDAGVICSKGADLSLRLVDGVTECSGRLE
VRFQGEWGTICDDGWDSYDAAVACKQLGCPTAVTAIGRVNASKGFGHIWLDVSVSCQGHPEAIWQCKHHEW
GKHYCNHNEADAGVTCSDGSDLELRLRGGGSRCAAGTVEVEIQRLLGKVCDRGWGLKEADVCRQLGCGSAL
KTSYQVYSKIQATNTWFLFLSSCNGNETSLWDCKNWQWGLTCDHYEEAKITCSAHREPRLVGGDIPCSGR
VEVKHGDWGSICSDSFLSLEAASVLCRELQCGTVVVSILGGAHFGEGNGQIWAEEFQCEGHESHLSLCPVA
PRPEGTCSHSRDVGVVCSRYTEIRLVNGKTPCEGRVELKTLGAWGSLCNSHWDIEDAHVLCQQLKCGVAL
STPGGARFGKGNQIWRHMFHCTGTEQHMGDVPTALGASLCPSEQVASVICSGNQSQTLSHCNSSSLGP
TRPTIPEESAVACIESGQLRLVNGGRCAGRVEIYHEGSWGTICDDSWLSDAHVVCRLGCGEAINATG
SAHFEGTGPIWLDKEMKNGKESRIWQCHSHGWGQNCRHKEDAGVICSEFMSLRLTSEASREACAGRLE
VFYNGAWGTGKSSMSETTVGVVCRQLGCADKGINPASLKDAMSIPMWVNDVQCPKGPDTLWQCPSSPW
EKRLASPSEETWITCDNKIRLQEGPTSCSAGRVEIWHGGSWGTVCDDSWLDDAQVVCQQLGCGPALKAFK
EAEFGQGTGPIWLVKCKGNESLWDCPARRWGHSECGHKEDAANCTDISVQKTPQKATTGRSSRQSS
FIAVGILGVVLLAIFVALFFLTKRRRQRQLAVSSRGENLVHQIQYREMNSCLNADDLDMNSSGGHSEPH
    
```

SGPTRRRLE - GFP Tag - V

Restriction Sites: SgfI-RsrII

Cloning Scheme:



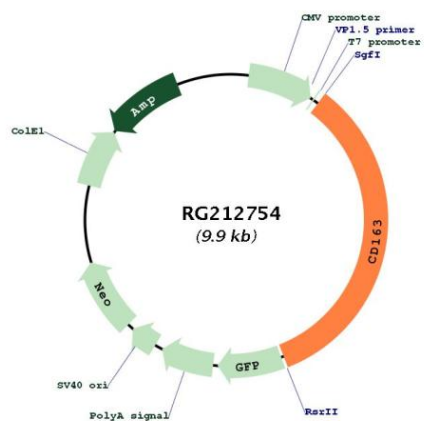
ACCN: NM\_203416

ORF Size: 3363 bp

OTI Disclaimer: The molecular sequence of this clone aligns with the gene accession number as a point of reference only. However, individual transcript sequences of the same gene can differ through naturally occurring variations (e.g. polymorphisms), each with its own valid existence. This clone is substantially in agreement with the reference, but a complete review of all prevailing variants is recommended prior to use. [More info](#)

<b>OTI Annotation:</b>	This clone was engineered to express the complete ORF with an expression tag. Expression varies depending on the nature of the gene.
<b>Components:</b>	The ORF clone is ion-exchange column purified and shipped in a 2D barcoded Matrix tube containing 10ug of transfection-ready, dried plasmid DNA (reconstitute with 100 ul of water).
<b>Reconstitution Method:</b>	<ol style="list-style-type: none"><li>1. Centrifuge at 5,000xg for 5min.</li><li>2. Carefully open the tube and add 100ul of sterile water to dissolve the DNA.</li><li>3. Close the tube and incubate for 10 minutes at room temperature.</li><li>4. Briefly vortex the tube and then do a quick spin (less than 5000xg) to concentrate the liquid at the bottom.</li><li>5. Store the suspended plasmid at -20°C. The DNA is stable for at least one year from date of shipping when stored at -20°C.</li></ol>
<b>RefSeq:</b>	<a href="#">NM_203416.4</a>
<b>RefSeq Size:</b>	4107 bp
<b>RefSeq ORF:</b>	3366 bp
<b>Locus ID:</b>	9332
<b>UniProt ID:</b>	<a href="#">Q86VB7</a>
<b>Cytogenetics:</b>	12p13.31
<b>Protein Families:</b>	Druggable Genome, Secreted Protein, Transmembrane
<b>Gene Summary:</b>	The protein encoded by this gene is a member of the scavenger receptor cysteine-rich (SRCR) superfamily, and is exclusively expressed in monocytes and macrophages. It functions as an acute phase-regulated receptor involved in the clearance and endocytosis of hemoglobin/haptoglobin complexes by macrophages, and may thereby protect tissues from free hemoglobin-mediated oxidative damage. This protein may also function as an innate immune sensor for bacteria and inducer of local inflammation. Alternatively spliced transcript variants encoding different isoforms have been described for this gene. [provided by RefSeq, Aug 2011]

Product images:



Circular map for RG212754