

Product datasheet for **RG212750**

NKAIN2 (NM_001040214) Human Tagged ORF Clone

Product data:

Product Type: Expression Plasmids
Product Name: NKAIN2 (NM_001040214) Human Tagged ORF Clone
Tag: TurboGFP
Symbol: NKAIN2
Synonyms: FAM77B; NKAIP2; TCBA; TCBA1
Mammalian Cell Selection: Neomycin
Vector: pCMV6-AC-GFP (PS100010)
E. coli Selection: Ampicillin (100 ug/mL)
ORF Nucleotide Sequence: >RG212750 representing NM_001040214
 Red=Cloning site Blue=ORF Green=Tags(s)

TTTTGTAATACGACTCACTATAGGGCGGCCGGAATTCGTCGACTGGATCCGGTACCGAGGAGATCTGCC
 GCC**CGATCGCC**

ATGGGTTATTGCAGTGGCAGGTGCACGCTTATCTTTATCTGTGGCATGCAACTGGTTTGTGTGCTGGAGA
 GGCAAATATTTGACTTCCTTGGATATCAGTGGCACCTATCTGGCAAATTTGTACATATTATTATCGT
 CATTCTGGTTTGTGGAACTATTCAATATAGACCTCGTTACATAACAGGATATGCTGTCTGGCTAGTC
 CTCTGGGTTACGTGGAATGTGTTTGTATCTGCTTCTATTTGGAGGCTGGGACCTCTCAAAGGAAACAG
 ACCTTATCTGACTTTTAAATATATCAATGCACCGATCTTGGTGGATGGAGATGGACCAGGATGTACGGT
 GACGTCAGTGACACCTGCCCCAGACTGGGCCCCAGAAGACCATCGCTACATCACGGTCTCAGGGTGTGTTG
 CTGGAGTACCAAGTACATAGAAGTGGCTCATAGTCCCTCCAGATTGTCCTCGCACTGGCAGGTTTCATCT
 ACGCCTGTTATGTTGTGAAATGTATAACTGAAGAAGAGGACAGCTTTGATTTTCATAGGTGGCTTTGACTC
 TTATGGCTATCAAGGCCTCAGAAGACATCTCATTTACAACACTACAGCCTATGTACATGTCAAAA

ACGCGTACGCGGCCGCTCGAG - GFP Tag - GTTTAA

Protein Sequence: >RG212750 representing NM_001040214
 Red=Cloning site Green=Tags(s)

MGYCGRCTLIFICGMQLVCLERQIFDFLGYQWAPILANFVHIIIVILGLFGTIQYRPRYITGYAVWL
 LWVTWNVFVICFYLEAGDLKETDLILTFNISMHRSSWWMENPGCTVTSVTPAPDWAPEDHRYITVSGCL
 LEYQYIEVAHSSLQIVLALAGFIYACYVVKITEEEDSFDFIGGFDSYGYQGPQKTSHLQLQPMYMSK

TRTRPLE - GFP Tag - V

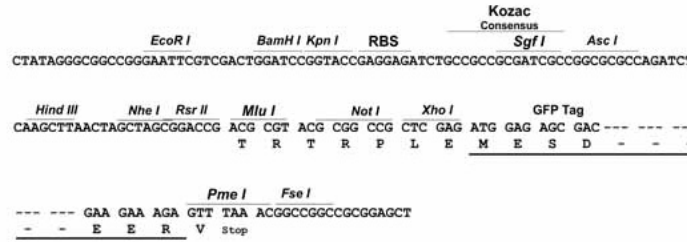
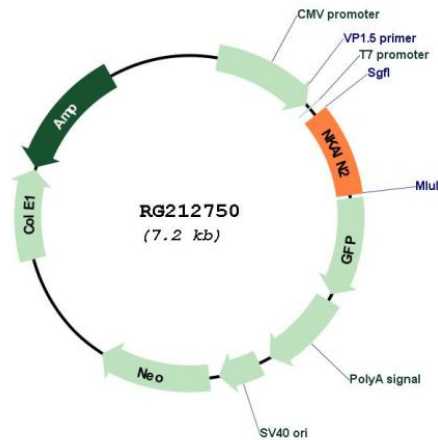
Restriction Sites: Sgfl-MluI



[View online »](#)

Cloning Scheme:

Cloning sites used for ORF Shutting:


Plasmid Map:


ACCN: NM_001040214

ORF Size: 624 bp

OTI Disclaimer: The molecular sequence of this clone aligns with the gene accession number as a point of reference only. However, individual transcript sequences of the same gene can differ through naturally occurring variations (e.g. polymorphisms), each with its own valid existence. This clone is substantially in agreement with the reference, but a complete review of all prevailing variants is recommended prior to use. [More info](#)

OTI Annotation: This clone was engineered to express the complete ORF with an expression tag. Expression varies depending on the nature of the gene.

Components: The ORF clone is ion-exchange column purified and shipped in a 2D barcoded Matrix tube containing 10ug of transfection-ready, dried plasmid DNA (reconstitute with 100 ul of water).

Reconstitution Method:

1. Centrifuge at 5,000xg for 5min.
2. Carefully open the tube and add 100ul of sterile water to dissolve the DNA.
3. Close the tube and incubate for 10 minutes at room temperature.
4. Briefly vortex the tube and then do a quick spin (less than 5000xg) to concentrate the liquid at the bottom.
5. Store the suspended plasmid at -20°C. The DNA is stable for at least one year from date of shipping when stored at -20°C.

RefSeq: [NM_001040214.3](#)

RefSeq Size: 3315 bp

RefSeq ORF: 627 bp

Locus ID: 154215

UniProt ID: [Q5VXU1](#)

Cytogenetics: 6q22.31

Protein Families: Transmembrane

Gene Summary: This gene encodes a transmembrane protein that interacts with the beta subunit of a sodium/potassium-transporting ATPase. A chromosomal translocation involving this gene is a cause of lymphoma. Alternative splicing results in multiple transcript variants encoding distinct isoforms. [provided by RefSeq, Jul 2014]