

Product datasheet for **RG212749**

Invadolysin (LMLN) (NM_033029) Human Tagged ORF Clone

Product data:

Product Type:	Expression Plasmids
Product Name:	Invadolysin (LMLN) (NM_033029) Human Tagged ORF Clone
Tag:	TurboGFP
Symbol:	LMLN
Synonyms:	GP63; INV; IX14; LMNL1; MSP
Mammalian Cell Selection:	Neomycin
Vector:	pCMV6-AC-GFP (PS100010)
E. coli Selection:	Ampicillin (100 ug/mL)



[View online »](#)

ORF Nucleotide
Sequence:

>RG212749 representing NM_033029
Red=Cloning site Blue=ORF Green=Tags(s)

TTTTGTAATACGACTCACTATAGGGCGGCCGGAATTCGTCGACTGGATCCGGTACCGAGGAGATCTGCC
GCC**CGCATCGCC**

ATGGTAACGACGCTCGGCCGAAGATGGCGGCCGAATGGGGCGGAGGAGTGGGTTACTCGGGCTCAGGCC
CGGGCCGAGCCGGTGGCGCTGGAGCGGGTCTGTGTGGTCCGAAGCGTTTTACTCCTGTTGGGCGGGCT
CCGGGCCAGCGCCACATCTACTCCCGTCTCCTTGGGCAGTTCCTCCCTGCCCGCACCAGTCCCTCT
GACACTGAGGTCATAAATAAAGTTCATCTTAAGGCAAATCATGTGGTCAAGAGAGATGTTGATGAGCATT
TAAGAATCAAGACTGTCTATGATAAAAGTGTGAAGAGTTGCTCCCTGAGAAAAAGAATCTGTAAAGAA
CAAGCTTTTCCACAAGCGATTTCTTATTTAGAGAAGACTTTTCAGGTCCGTCGACTGCGGGCACTATC
TTACTTAGCAGACAATGTGCAACAAACCAATACCTCCGGAAGGAAAACGATCCTCACAGGACTGCACCG
GGGAGTGTGCCGACACAAAAGTGGGCCCGGTTATTGTTCTGAGGAACATCTCCAGCAATGCCGGT
CTACCGTGGGGTAAGTGGCCTCATGGAGCAGTGGGTGTCCAGACCAAGAAGGCATCTCAGATGCAGAC
TTTGTTCTTTACGTTGGTCTCTGGCCACCGAGAGATGCAGCCATGAAAACATCATCTCTTATGCAGCCT
ATTGTCAGCAGGAAGCAAACATGGACAGGCCAATAGCAGGATATGCTAACCTGTGTCCAATATGATCTC
TACCCAGCCTCAGGAGTTTGTGGGATGCTGTCCACAGTAAAACATGAGGTTATTCATGCCTGGGTTTC
TCTGCTGGGCTGTTTGCATTCTACCATGATAAAGATGGAATCCTCTCACTTCAAGATTTGCAGATGGCC
TCCCACCTTTAATTATAGTCTGGGATTATCAATGGAGTGATAAAGTAGTTCGAAAAGTGGAGAGATT
ATGGGATGTTTCGAGATAAAGATAGTTCGTCACACTGTGTATCTCCTGGTAACGCCTCGTGTGTTGAG
GAAGCACGAAAACATTTGATTGTCCAGTCTAGAGGGAATGAACTTAAAAATCAAGGTGGTGGGGCA
CTGAGCTCAACCATGGGAAAAAAGGTTATTAGAGAATGAAGCGATGACTGGTTCTCACACTCAGAATCG
AGTACTCTCTCGAATCACTCTGGCATTAAATGGAGGACACTGGGAGACAGATGCTGAGCCCTTACTGTGAC
ACGCTCAGAAGTAACCCACTGCAGCTAAGTTCAGACAGGACCAGAGAGCAGTTGCCGTGTGAATTTGC
AGAAGTCCCTAAGCCTTACCACAGGAATACCAGTACTTTGATGAACTCAGTGAATACCTGCAGAAGA
TTTGCCTTATTATGGTGGCTCCGTGAAATGCTGACTACTGCCCTTTCAGTCAGGAATTCAGTTGGCAT
TTAAGTGGTGAATATCAGCGCAGCTCAGATTGTAGAATATTGGAAAATCAACCAGAAAATTTTAAGAACT
ATGGCGCTGAAAAGTATGGACCTCATTCCGTTTGTCTAATTCAGAAATCAGCATTCTGTTATGGAGAAGTG
TGAGAGGAAGCTGAGTTACCCAGACTGGGAAGCGGATGCTATCAGGTTTCTTGTCTCCTCAAGGTCTG
AAAGTTTGGGTCCAAGATACTTCATATTTGTGTAGTCGGGCTGGGCAGGTCTCCCTGTGAGTATCCAGA
TGAAATGGCTGGATTCACGATGGAACCTGCTCTGCCCATCATGTTGGGACTTCTGTGAGCTGTCTCCTC
AGAAACAGATCCTCCAGCCACTAACCTGACCCGAGCTCTGCCACTTGATCTTTGTTCTGTTCTCGAGC
CTGGTGGTCACCCCTCTGGCTTCTGCTAGGCAATCTGTTTCTCTGCTGGCTGGATTTCTTCTGTGTATAT
GGCAC

ACGCGTACGCGGCCGCTCGAG – GFP Tag – GTTTAA

Protein Sequence: >RG212749 representing NM_033029
 Red=Cloning site Green=Tags(s)

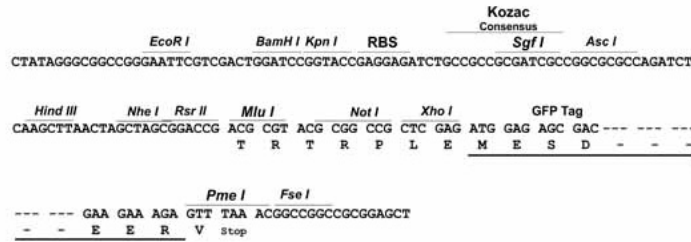
```
MVTTLGPKMAAEWGGGVGYSGSGPGRSRWRWVRSVLLLLGGLRASATSTPVSLGSSPPCRHHVPS
DTEVINKVHLKANHVVKRDVDEHLRIKTVYDKSVEELLPEKKNLVKNLFPQAISYLEKTFQVRRPAGTI
LLSRQCATNQYLKENDPHRYCTGECOAHTKCGPVIIVPEEHLQQCRVYRGGKWPBGAVGVPDQEGISDAD
FVLYVYGALATERCSHENIISYAAYCQEQEANMDRPIAGYANLCPNMI STQPQEFVGM LSTVKHEVIHALGF
SAGLFAFYHDKDGNPLTSRFADGLPPFNYSGLYQWSDKVVRKVERLWDVRDNKIVRHTVYLLVTPRVVE
EARKHFDCPVLEGMELNQGGVGTLELNHWKRLLENEAMTGSHTQNRVLSRITLALMEDTGRQMLSPYCD
TLRSNPLQLTCRQDQRAVAVCNLQKFKPLPQEYQYFDEL SGIPAEDLPYYGGSVEIADYCPFSQEF SWH
LSGEYQRSSDCRILENQPEIFKNYGAEKYGPSVCLIQKSAFVMEK CERKLSYPDWGSGCYQVSCSPQGL
KVWVQDTSYLC SRAGQVLPVSIQMNGWIHDGNLLCPSCWDFCEL CPPETDPPATNLTRALPLDLCS CSSS
LVVTLWLLLGNLFPLLAGFLLCIWH
```

TRTRPLE - GFP Tag - V

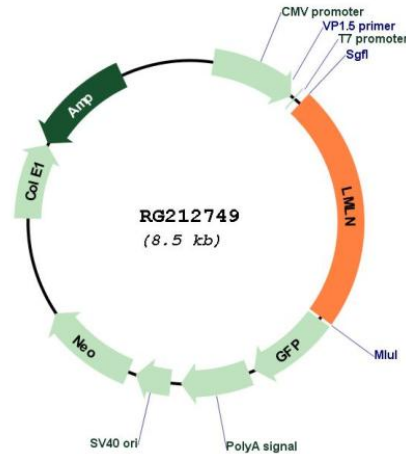
Restriction Sites: SgfI-MluI

Cloning Scheme:

Cloning sites used for ORF Shuttling:



Plasmid Map:



ACCN: NM_033029

ORF Size: 1965 bp

OTI Disclaimer: The molecular sequence of this clone aligns with the gene accession number as a point of reference only. However, individual transcript sequences of the same gene can differ through naturally occurring variations (e.g. polymorphisms), each with its own valid existence. This clone is substantially in agreement with the reference, but a complete review of all prevailing variants is recommended prior to use. [More info](#)

OTI Annotation: This clone was engineered to express the complete ORF with an expression tag. Expression varies depending on the nature of the gene.

Components: The ORF clone is ion-exchange column purified and shipped in a 2D barcoded Matrix tube containing 10ug of transfection-ready, dried plasmid DNA (reconstitute with 100 ul of water).

Reconstitution Method:

1. Centrifuge at 5,000xg for 5min.
2. Carefully open the tube and add 100ul of sterile water to dissolve the DNA.
3. Close the tube and incubate for 10 minutes at room temperature.
4. Briefly vortex the tube and then do a quick spin (less than 5000xg) to concentrate the liquid at the bottom.
5. Store the suspended plasmid at -20°C. The DNA is stable for at least one year from date of shipping when stored at -20°C.

RefSeq: [NM_033029.3](#), [NP_149018.2](#)

RefSeq Size: 7043 bp

RefSeq ORF: 1944 bp

Locus ID: 89782

UniProt ID: [Q96KR4](#)

Cytogenetics: 3q29

Protein Families: Druggable Genome, Protease, Transmembrane

Gene Summary: This gene encodes a zinc-metallopeptidase. The encoded protein may play a role in cell migration and invasion. Studies of a similar protein in *Drosophila* indicate a potential role in mitotic progression. Alternatively spliced transcript variants have been described. [provided by RefSeq, Feb 2009]