

## Product datasheet for **RG212736**

### CPNE1 (NM\_152928) Human Tagged ORF Clone

#### Product data:

Product Type:	Expression Plasmids
Product Name:	CPNE1 (NM_152928) Human Tagged ORF Clone
Tag:	TurboGFP
Symbol:	CPNE1
Synonyms:	COPN1; CPN1
Mammalian Cell Selection:	Neomycin
Vector:	pCMV6-AC-GFP (PS100010)
E. coli Selection:	Ampicillin (100 ug/mL)



[View online »](#)

**ORF Nucleotide Sequence:**

>RG212736 representing NM\_152928  
 Red=Cloning site Blue=ORF Green=Tags(s)

TTTTGTAATACGACTCACTATAGGGCGGCCGGAATTCGTCGACTGGATCCGGTACCGAGGAGATCTGCC  
 GCC**CGGATCGCC**

ATGGCCACTGCGTGACCTTGGTTGAGCTGTCATTTCTGTGACCATCTCATTGACAAGGACATCGGCT  
 CCAAGTCTGACCCACTCTGCGTCTTTTACAGGATGTGGGAGGGGCGAGCTGGGCTGAGCTTGCCGGAC  
 TGAACGGGTGCGAACTGCTCAAGCCCTGAGTTCTCCAAGACTCTACAGCTTGAGTACCGCTTTGAGACA  
 GTCCAGAAGCTACGCTTTGGAATCTATGACATAGACAACAAGACGCCAGAGCTGAGGGATGATGACTTCC  
 TAGGGGGTGTGAGTGTCCCTAGGACAGATTGTGTCCAGCCAGGTAAGTACTGACTCTCCCTTGATGCTGAA  
 GCCTGGAAAACCTGCTGGGCGGGGACCATCACGGTCTCAGCTCAGGAATTAAGGACAATCGTGTAGTA  
 ACCATGGAGGTAGAGGCCAGAACTAGATAAAGAAGGACTTCTGGGAAAATCAGATCCATTTCTGGAGT  
 TCTTCCGCCAGGGTATGGGAAATGGCACCTGGTGTACAGATCTGAGGTCATCAAGAACAACCTGAACCC  
 TACATGGAAGCGTTTCTCAGTCCCGTTGAGCATTCTGTGGTGGGAACCCAGCACACCCATCCAGGTG  
 CAATGCTCCGATTATGACAGTGACGGGTACATGATCTCATCGGTACCTCCACACCAGCTTGCCCCAGC  
 TGCAGGACGTCGCCGCTGAGTTGAATGCATCCACCTGAGAAGCAGCAGAAAAAGAAAGCTACAAGAA  
 CTCTGGAATACTCCGTGTCAAGATTTGTCGGGTAGAAACAGAGTACTCCTTTCTGGACTATGTGATGGGA  
 GGCTGTGAGTCAACTTCACTGTGGCGTGGACTTCACTGGTCCAATGGAGACCCTCCTCACCTGACT  
 CCCTACACTACCTGAGTCCAACAGGGGTCAATGAGTACCTGATGGCACTGTGGAGTGTGGGACGCGTGGT  
 TCAGGACTATGACTCAGACAAGCTGTCCCTGCATTTGGATTTGGGGCCAGGTTCCCTGACTGGCAG  
 GTCTCGCATGAATTTGCCTTGAATTTCAACCCAGTAAACCCCTACTGTGCAGGCATCCAGGGCATTGTGG  
 ATGCCACCGCAAGCCCTGCCCAAGTTCGCCTCTATGGCCCTACCAACTTTGCACCCATCAACCA  
 TGTGGCCAGGTTTGCAGCCAGGCTGCACATCAGGGGACTGCCTCGCAATACTTCATGCTGTTGCTGCTG  
 ACTGATGGTGTGTGACGGATGTGGAAGCCACACGTGAGGCTGTGGTGCCTCGAACCTGCCATGT  
 CAGTGATCATTGTGGGTGTGGTGGTGTGACTTTGAGGCCATGGAGCAGCTGGACGCTGATGGTGGACC  
 CCTGCATACAGTTCTGGGACGGCTGTGCCCGGACATTGTGCAGTTTGTACCTACCGCCGGTCCAG  
 AATGCCCTCGGGAGGCATTGGCACAGACCGTGTGCGAGAAGTGCCACACAACCTGGTCTCATACTTCA  
 GGGCCAGGGTTGGGCCCGCTCAAGCCACTTCCACCCTCAGCCAAGGATCTGCACAGGCCCCCGCCAGGC  
 C

**ACGCGTACGCGGCCGCTCGAG** - GFP Tag - GTTTAA

**Protein Sequence:**

>RG212736 representing NM\_152928  
 Red=Cloning site Green=Tags(s)

MAHCVTLVQLSISCDHLIDKDIGSKSDPLCVLLQDVGGGWAELGRTERVRNCSSPEFSKTLQLEYRFET  
 VQKLRFGIYDIDNKTPELRDDDFLGAECSLGQIVSSQVLTPLMLKPGKPAGRGITVSAQELKDNRVV  
 TMEVEARNLDKDFLGGSDPFLFFRQGDGKWHLYRSEVIKNNLNPTWKRFVSPVQHFVCGGNPSTPIQV  
 QCSYDSDGSHDLIGTFHTSLAQLQAVPAEFECIHPEKQKQKSYKNSGTIRVKICRVETEYSFLDYVMG  
 GCQINFVGVDFTGSDPSSPDSLHYLSPTGVNEYLMALWSVGSVVQDYSDKLFPAFGFGAQPVPDWQ  
 VSHEFALNFNPSNPYCAGIQGIVDAYRQALPQVRLYGPTNFAPIINHVARFAAQAHQGTASQYFMLLLL  
 TDGAVTDVEATREAVVRASNLPM SVIIVGVGGADFEAMEQLDADGGPLHTRSGQAAARDIVQFVYRRFQ  
 NAPREALAQTVLAEVPTQLVSYFRAQGWAPLKLPLPPSAKDPAQAPQA

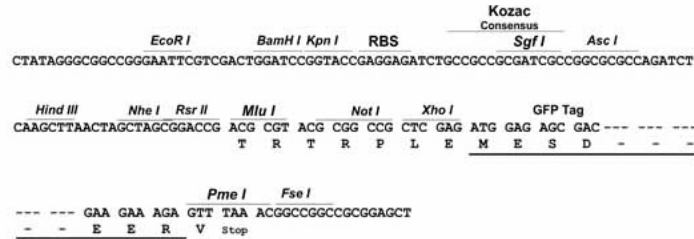
**TRTRPLE** - GFP Tag - V

**Restriction Sites:**

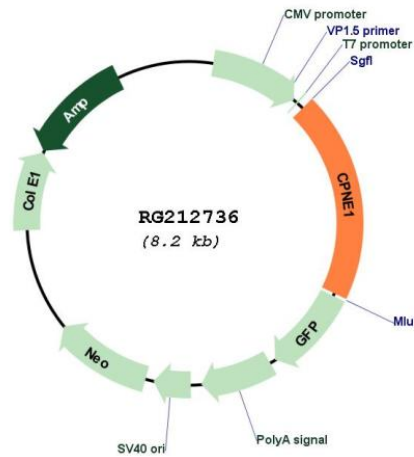
Sgfl-MluI

Cloning Scheme:

Cloning sites used for ORF Shutting:



Plasmid Map:



<b>ACCN:</b>	NM_152928
<b>ORF Size:</b>	1611 bp
<b>OTI Disclaimer:</b>	The molecular sequence of this clone aligns with the gene accession number as a point of reference only. However, individual transcript sequences of the same gene can differ through naturally occurring variations (e.g. polymorphisms), each with its own valid existence. This clone is substantially in agreement with the reference, but a complete review of all prevailing variants is recommended prior to use. <a href="#">More info</a>
<b>OTI Annotation:</b>	This clone was engineered to express the complete ORF with an expression tag. Expression varies depending on the nature of the gene.
<b>Components:</b>	The ORF clone is ion-exchange column purified and shipped in a 2D barcoded Matrix tube containing 10ug of transfection-ready, dried plasmid DNA (reconstitute with 100 ul of water).
<b>Reconstitution Method:</b>	<ol style="list-style-type: none"><li>1. Centrifuge at 5,000xg for 5min.</li><li>2. Carefully open the tube and add 100ul of sterile water to dissolve the DNA.</li><li>3. Close the tube and incubate for 10 minutes at room temperature.</li><li>4. Briefly vortex the tube and then do a quick spin (less than 5000xg) to concentrate the liquid at the bottom.</li><li>5. Store the suspended plasmid at -20°C. The DNA is stable for at least one year from date of shipping when stored at -20°C.</li></ol>
<b>RefSeq:</b>	<a href="#">NM_152928.3</a>
<b>RefSeq Size:</b>	2049 bp
<b>RefSeq ORF:</b>	1614 bp
<b>Locus ID:</b>	8904
<b>UniProt ID:</b>	<a href="#">Q99829</a>
<b>Cytogenetics:</b>	20q11.22
<b>Gene Summary:</b>	Calcium-dependent membrane-binding proteins may regulate molecular events at the interface of the cell membrane and cytoplasm. This gene encodes a calcium-dependent protein that also contains two N-terminal type II C2 domains and an integrin A domain-like sequence in the C-terminus. However, the encoded protein does not contain a predicted signal sequence or transmembrane domains. This protein has a broad tissue distribution and it may function in membrane trafficking. This gene and the gene for RNA binding motif protein 12 overlap at map location 20q11.21. Alternate splicing results in multiple transcript variants encoding different proteins. [provided by RefSeq, Aug 2008]