

## Product datasheet for **RG212734**

### **FBX09 (NM\_033480) Human Tagged ORF Clone**

#### Product data:

**Product Type:** Expression Plasmids  
**Product Name:** FBX09 (NM\_033480) Human Tagged ORF Clone  
**Tag:** TurboGFP  
**Symbol:** FBX09  
**Synonyms:** dj341E18.2; FBX9; NY-REN-57; VCIA1  
**Mammalian Cell Selection:** Neomycin  
**Vector:** pCMV6-AC-GFP (PS100010)  
**E. coli Selection:** Ampicillin (100 ug/mL)  
**ORF Nucleotide Sequence:** >RG212734 representing NM\_033480  
 Red=Cloning site Blue=ORF Green=Tags(s)

TTTTGTAATACGACTCACTATAGGGCGGCCGGAATTCGTCGACTGGATCCGGTACCGAGGAGATCTGCC  
 GCC**CGATCGCC**

ATGGCAGAAGCTGAGGAAGATTGTCATTCTGATACTGTCAGAGCAGATGATGATGAAGAAAATGAAAGTC  
 CTGCTGAAACAGATCTGCAGGCACAACCTCCAGATGTTCCGAGCTCAGTGGATGTTTGAACCTGCTCCAGG  
 TGTAAGCTCTAGCAATTTAGAAAATCGACCTTGCAGAGCAGCAAGAGGCTCTCTCCAGAAAACATCGGCA  
 GATACCAAAGGAAAACAAGAACAGGCAAAAAGAAGAAAAGGCTCGAGAACTCTTCTAAAAGCAGTAGAAG  
 AAGAACAAAATGGAGCTCTCTATGAAGCCATCAAGTTTTATCGTAGGGCTATGCAACTTGTACCTGATAT  
 AGAGTTCAAGATTAATACCCGGTCTCCAGATGGTGTATGGCGTTGAAACAGCTACATTGAAGATAAT  
 GATGATGACAGCAAAATGGCAGATCTCTTGTCCCTACTTCCAGCAGCAACTCACATTTTCAGGAGTCTGTGC  
 TTAACCTGTGTCAGCCTGAGCTTGTAGAGCAGTCAGATTCACATATCAGTCTGCCAATGGAGGTCCTGAT  
 GTACATCTCCGATGGTGGTGTCTAGTGACTTGGACCTCAGATCATTGGAGCAGTTGTCTGCTGGTGTGC  
 AGAGGATTCTACATCTGTGCCAGAGACCCTGAAATATGGCGTCTGGCCTGCTTGAAGTTTGGGGCAGAA  
 GCTGTATTAACCTGTTCCGTACACGTCCTGGAGAGAGATGTTTTAGAACGGCCTCGTGTTCGGTTTGA  
 TGGCGTGTATATCAGTAAAACCATATATTCGTCAAGGGGAACAGTCTTTGATGGTTTCTATAGAGCC  
 TGGCACCAAGTGAATATTACAGGTACATAAGATTCTTTCTGATGGCCATGTGATGATGTTGACAACCC  
 CTGAAGAGCCTCAGTCCATTGTTCCACGTTTAAAGAACTAGGAATACCAGGACTGATGCAATTCTACTGGG  
 TCACTATCGCTTGTACAAAGACACAGACAATCAGACCAAAGTATTTGCTGTAATAACTAAGAAAAAGAA  
 GAAAAACCACTTGACTATAAATACAGATATTTTCGTCGTGCCCTGTACAAGAAGCAGATCAGAGTTTTTC  
 ATGTGGGGCTACAGCTATGTTCCAGTGGTCACCAGAGGTTCAACAACTCATCTGGATACATCATTCTTG  
 TCACATTACTTACAAATCAACTGGTGAGACTGCAGTCAGTCTTTTGGATTGACAAGATGTACACCCCC  
 TTGTTCTCGCCAGAGTAAGGAGCTACACAGCTTCTCAGAAAGGCTCTG

**ACGCGTACGCGGCCGCTCGAG** - GFP Tag - GTTTAA



[View online >](#)

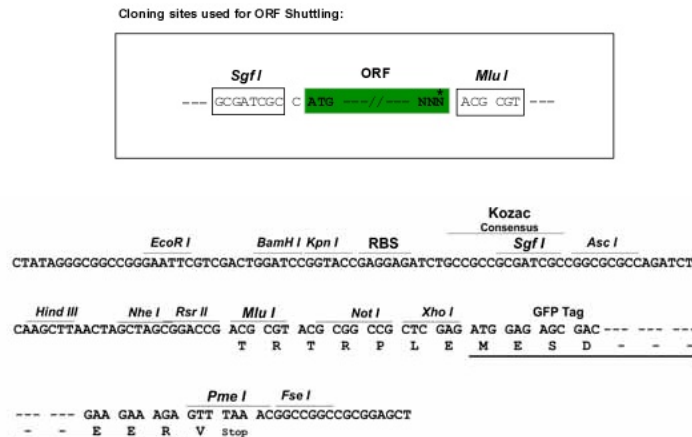
**Protein Sequence:** >RG212734 representing NM\_033480  
 Red=Cloning site Green=Tags(s)

MAEAEEDCHSDTVRADDDEENESPAETDLQAQLQMFRAQWMFELAPGVSSSNLENRPCRAARGSLQKTS  
 DTKGKQEQAKEEKARELFLKAVEEEQNGALYEAIKFYRRAMQLVPDIEFKITYTRSPDGDGVGNSYIEDN  
 DDDSKMADLLSYFQQQLTFQESVLKLCQPELESSQIHSVLPMEVLMYIFRWVSSDLDLRSLEQLSLVC  
 RGFYICARDPEIWRLACLKVGWGRSCIKLVPYTSWREMFLERPRVRFDGVIYSKTTYIRQGEQSLDGFYRA  
 WHQVEYYRYIRFFPDGHVMMLTTPPEPQSIVPRLRTRNTRTDAILLGHYRLSQDTDNQTKVFAVITKKKE  
 EKPLDYKYRYFRFVQVQADQSFHVGLQLCSSGHQRFNKLIWIHHSCHITYKSTGETAVSAFEIDKMYTP  
 LFFARVRSYAFSERPL

TRTRPLE - GFP Tag - V

**Restriction Sites:** SgfI-MluI

**Cloning Scheme:**



**ACCN:** NM\_033480

**ORF Size:** 1311 bp

**OTI Disclaimer:** The molecular sequence of this clone aligns with the gene accession number as a point of reference only. However, individual transcript sequences of the same gene can differ through naturally occurring variations (e.g. polymorphisms), each with its own valid existence. This clone is substantially in agreement with the reference, but a complete review of all prevailing variants is recommended prior to use. [More info](#)

**OTI Annotation:** This clone was engineered to express the complete ORF with an expression tag. Expression varies depending on the nature of the gene.

**Components:** The ORF clone is ion-exchange column purified and shipped in a 2D barcoded Matrix tube containing 10ug of transfection-ready, dried plasmid DNA (reconstitute with 100 ul of water).

**Reconstitution Method:**

1. Centrifuge at 5,000xg for 5min.
2. Carefully open the tube and add 100ul of sterile water to dissolve the DNA.
3. Close the tube and incubate for 10 minutes at room temperature.
4. Briefly vortex the tube and then do a quick spin (less than 5000xg) to concentrate the liquid at the bottom.
5. Store the suspended plasmid at -20°C. The DNA is stable for at least one year from date of shipping when stored at -20°C.

**RefSeq:** [NM\\_033480.3](#)

**RefSeq Size:** 3454 bp

**RefSeq ORF:** 1314 bp

**Locus ID:** 26268

**UniProt ID:** [Q9UK97](#)

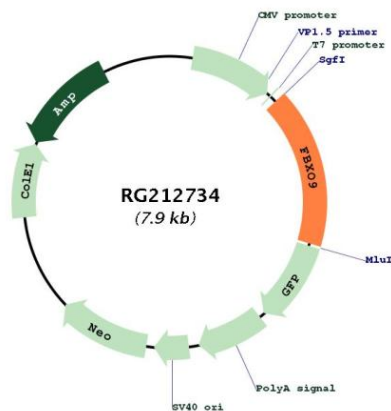
**Cytogenetics:** 6p12.1

**Domains:** F-box

**Protein Families:** Druggable Genome

**Gene Summary:** This gene encodes a member of the F-box protein family which is characterized by an approximately 40 amino acid motif, the F-box. The F-box proteins constitute one of the four subunits of the ubiquitin protein ligase complex called SCFs (SKP1-cullin-F-box), which function in phosphorylation-dependent ubiquitination. The F-box proteins are divided into 3 classes: Fbws containing WD-40 domains, Fbls containing leucine-rich repeats, and Fbxs containing either different protein-protein interaction modules or no recognizable motifs. The protein encoded by this gene belongs to the Fbxs class. Alternative splicing of this gene generates at least 3 transcript variants diverging at the 5' terminus. [provided by RefSeq, Jul 2008]

### Product images:



Circular map for RG212734