

Product datasheet for **RG212731**

Dystrophin (DMD) (NM_004013) Human Tagged ORF Clone

Product data:

Product Type:	Expression Plasmids
Product Name:	Dystrophin (DMD) (NM_004013) Human Tagged ORF Clone
Tag:	TurboGFP
Symbol:	DMD
Synonyms:	BMD; CMD3B; DXS142; DXS164; DXS206; DXS230; DXS239; DXS268; DXS269; DXS270; DXS272; MRX85
Mammalian Cell Selection:	Neomycin
Vector:	pCMV6-AC-GFP (PS100010)
E. coli Selection:	Ampicillin (100 ug/mL)
ORF Nucleotide Sequence:	>RG212731 representing NM_004013 Red=Cloning site Blue=ORF Green=Tags(s)

TTTTGTAATACGACTCACTATAGGGCGGCCGGAATTCGTCGACTGGATCCGGTACCGAGGAGATCTGCC
GCC**CGATCGCC**

ATGCCATCTTCCTTGATGTTGGAGGTACCTGCTCTGGCAGATTTCAACCGGGCTTGGACAGAACTTACCG
ACTGGCTTTCTCTGCTTGATCAAGTTATAAAATCACAGAGGGTGTGGTGGGTGACCTTGAGGATATCAA
CGAGATGATCATCAAGCAGAAGGCAACAATGCAGGATTTGGAACAGAGCGTCCCGAGTTGGAAGAACTC
ATTACCGCTGCCAAAATTTGAAAAACAAGACCAGCAATCAAGAGGCTAGAACAATCATTACGGATCGAA
TTGAAAGAATTCAGAATCAGTGGGATGAAGTACAAGAACACCTTCAGAACCGGAGGCAACAGTTGAATGA
AATGTTAAAGGATTCAACACAATGGCTGGAAGCTAAGGAAGAAGCTGAGCAGGTCTTAGGACAGGCCAGA
GCCAAGCTTGAGTCATGGAAGGAGGGTCCCTATACAGTAGATGCAATCCAAAAGAAAATCACAGAAACCA
AGCAGTTGGCCAAAGACCTCCGCCAGTGGCAGACAAATGTAGATGTGGCAAATGACTTGGCCCTGAAACT
TCTCCGGGATTATTCTGCAGATGATACCAGAAAAGTCCACATGATAACAGAGAATATCAATGCCTCTTGG
AGAAGCATTATAAAAAGGGTGAAGTGAAGCAGAGGCTGCTTTGGAAGAACTCATAGATTACTGCAACAGT
TCCCCCTGGACCTGGAAGGTTTCTTGCCTGGCTTACAGAAGCTGAAACAACCTGCCAATGTCTACAGGA
TGCTACCCGTAAGGAAAGGCTCCTAGAAGACTCCAAGGGAGTAAAAGAGCTGATGAAACAATGGCAAGAC
CTCCAAGTGAAATTGAAGCTCACACAGATGTTTATCACAACTGGATGAAAACAGCCAAAAATCCTGA
GATCCCTGGAAGGTTCCGATGATGCAGTCTGTTACAAAGACGTTTGGATAACATGAACTCAAGTGGAG
TGAACCTCGAAGGTTCTCAACATTAGGTCCATTTGGAAGCCAGTCTGACCAGTGGAAAGCGTCTG
CACCTTTCTCTGCAGGAACTTCTGGTGTGGCTACAGCTGAAAGATGATGAATTAAGCCGGCAGGCACCTA
TTGGAGGCGACTTCCAGCAGTTCAGAAGCAGAACGATGTACATAGGGCCTTCAAGAGGGAATTGAAAAC
TAAAGAACCTGTAATCATGAGTACTCTTGAAGTGTACGAATATTTCTGCAGAGCAGCCTTTGGAAGGA
CTAGAGAACTCTACCAGGAGCCAGAGAGCTGCCTCCTGAGGAGAGAGCCAGAATGCTACTCGGCTTC
TACGAAAGCAGGCTGAGGAGTCAATACTGAGTGGAAAAATTGAACCTGCACTCCGCTGACTGGCAGAG



[View online »](#)

AAAAATAGATGAGACCCCTTGAAAGACTCCAGGAACTTCAAGAGGCCACGGATGAGCTGGACCTCAAGCTG
CGCCAAGCTGAGGTGATCAAGGGATCCTGGCAGCCCGTGGGCGATCTCCTCATTGACTCTCTCCAAGATC
ACCTCGAGAAAGTCAAGGCACTTCGAGGAGAAATTGCGCCTCTGAAAGAGAACGTGAGCCACGTCAATGA
CCTTGCTCGCCAGCTTACCACTTTGGGCATTGAGCTCTCACCGTATAACCTCAGCACTCTGGAAGACCTG
AACACCAGATGGAAGCTTCTGCAGGTGGCCGTCGAGGACCGAGTCAGGCAGCTGCATGAAGCCCACAGGG
ACTTTGGTCCAGCATCTCAGCACTTTCTTTCCACGTCTGTCCAGGGTCCCTGGGAGAGGCCATCTCGCC
AAACAAAGTGCCCTACTATATCAACCACGAGACTCAAACAACCTGCTGGGACCATCCCAAAATGACAGAG
CTCTACCAGTCTTTAGCTGACCTGAATAATGTCAGATTCTCAGCTTATAGGACTGCCATGAAACTCCGAA
GACTGCAGAAGGCCCTTTGCTTGGATCTCTTGAGCCTGTCAGCTGCATGTGATGCCTTGGACCAGCACAA
CCTCAAGCAAAATGACCAGCCATGGATATCCTGCAGATTATTAATTGTTTGACCACTATTTATGACCGC
CTGGAGCAAGAGCACAACAATTTGGTCAACGTCCCTCTCTGCGTGGATATGTGTCTGAACTGGCTGCTGA
ATGTTTATGATACGGGACGAACAGGGAGGATCCGTGTCCTGTCTTTTAAACTGGCATCATTTCCCTGTG
TAAAGCACATTTGGAAGACAAGTACAGATACCTTTTCAAGCAAGTGGCAAGTTCAACAGGATTTTGTGAC
CAGCGCAGGCTGGGCTCCTTCTGCATGATTCTATCCAAATCCAAGACAGTTGGGTGAAGTTGCATCCT
TTGGGGCAGTAACATTGAGCCAAGTGTCCGGAGCTGCTTCCAATTTGCTAATAAAGCCAGAGATCGA
AGCGGCCCTCTTCTAGACTGGATGAGACTGGAACCCAGTCCATGGTGTGGCTGCCCGTCTGCACAGA
GTGGCTGCTGCAGAACTGCCAAGCATCAGGCCAAATGTAACATCTGCAAGAGTGTCCAATCATTGGAT
TCAGGTACAGGAGTCTAAAGCACTTTAATTATGACATCTGCCAAAGCTGCTTTTTTCTGGTCGAGTTGC
AAAAGGCCATAAAATGCACTATCCCATGGTGGAAATATTGCACTCCGACTACATCAGGAGAAGATGTTGCA
GACTTTGCCAAGTACTAAAAACAATTTGAAACCAAAAGGTATTTTGGCAAGCATCCCCGATGGGCT
ACCTGCCAGTGCAGACTGTCTTAGAGGGGGACAACATGGAAACTCCCGTTACTCTGATCACTTCTGGCC
AGTAGATTCTGCGCTGCCTCGTCCCTCAGCTTTCACACGATGATACTCATTACGCATTGAACATTAT
GCTAGCAGGCTAGCAGAAATGGAAAACAGCAATGGATCTTATCTAAATGATAGCATCTCTCCTAATGAGA
GCATAGATGATGAACATTTGTTAATCCAGCATTACTGCCAAAGTTTGAACCAGGACTCCCCCTGAGCCA
GCCTCGTAGTCCCTGCCAGATCTTGATTTCTTAGAGAGTGAGGAAAGAGGGGAGCTAGAGAGAATCCTA
GCAGATCTTGAGGAAGAAAACAGGAATCTGCAAGCAGAATATGACCGTCTAAAGCAGCAGCACGAACATA
AAGGCCTGTCCCCACTGCCGTCCCTCCTGAAATGATGCCACCTCTCCCCAGAGTCCCCGGGATGCTGA
GCTCATTGCTGAGGCCAAGCTACTGCGTCAACACAAAGGCCGCTGGAAGCCAGGATGCAAAATCCTGGAA
GACCACAATAAACAGCTGGAGTACAGTTACACAGGCTAAGGCAGCTGCTGGAGCAACCCAGGCAGAGG
CCAAAGTGAATGGCACAACGGTGTCTCTCTTCTACCTCTCTACAGAGGTCGACAGCAGTCAGCCTAT
GCTGCTCCGAGTGGTTGGCAGTCAAACCTCGGACTCCATGGGTGAGGAAGATCTTCTCAGTCTCCCCAG
GACACAAGCACAGGGTTAGAGGAGGTGATGGAGCAACTCAACAACCTCCTCCCTAGTTCAAGAGGAAGAA
ATACCCCTGGAAGCCAATGAGAGAGGACACAATG

ACGCGTACGCGGCCGCTCGAG – GFP Tag – GTTTAA

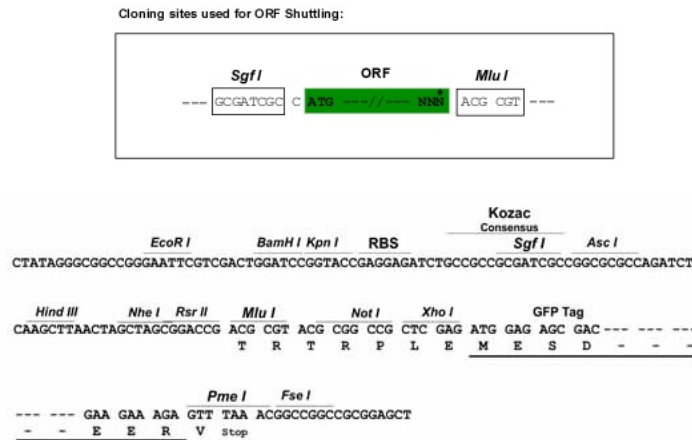
Protein Sequence: >RG212731 representing NM_004013
 Red=Cloning site Green=Tags(s)

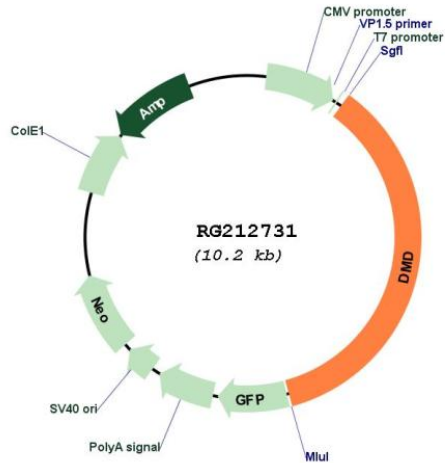
MPSSLMLEVPALADFNRAWTEL TDWLSLLDQVIKSQRVMVGDLEDINEMIIKQKATMQDLEQRRPQLEEL
 ITAAQNLKNKTSNQEARTIITDRIERIQNQWDEVQEHLQNRQQLEMLKDKSTQWLEAKEEAEQVLGOAR
 AKLESWKEGPTYVDIAIQKKITETKQLAKDLRQWQTNVDVANDLALKLLRDYSADDTRKVVHMITENINASW
 RSIHKRVSEREAAL EETHRLLQQFPLDLEKFLAWL TEAETTANVLQDATRKERLLED SKGVKELMKQWQD
 LQGEIEAHTDVYHNL DENSQKILRSLEGSDDAVLLQRRLDNMNFKWSSEL RKKSLNIRSHLEASSDQWKRL
 HLSLQELLVWLQLKDDDEL SRQAPIGGDFPAVQKQNDVHRAFKRELKTKPEVIMSTLETVRIFLTEQPLEG
 LEKLYQEPRELPPEERAQNVTRLLRKAEEVNTWEKLNLSADWQRKIDETLERLQELQEATDEL DLKL
 RQAEVIKGSWQPVGDLL IDSLQDHLEKVKALRGEIAPLKENVSHVNDLARQLTTLGIQLSPYNLSTLEDL
 NTRWKLQVAVEDRVRQLHEAHRDFGPASQHF LSTSVQGPWERAISPKNVPPYYINHETQTTCDWHPKMT
 LYQSLADLNNVRF SAYRTAMKLRRLQKALCLDLLSL SAACDALDQHNLKQNDQPMIDLQIINCLTTIYDR
 LEQEHNNLVNVP LCVDMCLNWL NVDYDTGRTGRIRVLSFKTGIISLCKAHLEDKYRYL FKQVASSTGFC
 D QRRLLGLLLHDSIQIPRQLGEVASFGGSNI EPSVRSQFQFANNKPEIEAALFLDWMRLEPQSMVWLPVLR
 VAAAETA KHQAKCNICECPIIGFRYRSLKHFNYD ICQSCFFSGRVAKGHKMHYPMVEYCTPTTSGEDVR
 DFAKVLKKNKFRKRYFAKHPRMGYLPVQTVLEGDNMPVTLINFWPVD SAPASSPQLSHDDTHSRIEY
 ASRLAEMENSGSYLND SI SPNESIDDEHLLIQHYCQLNQD SPLSQPRSPAQILISLESEERGERIL
 ADLEENRNLQAEYDRLKQHEHKG LSP LSPPEMMP TSPQSPRDAELIAEAKLLRQHKGRLEARMQILE
 DHNKQLESQ LHRQLLEQPQAEAKVNGTTVSSPSTSLQRSDSSQPMLLRVVGSTSDSMGEEDLLSPQ
 DTSTGLEEVMEQLNNSFPSSRGRNTPGKPMREDTM

TRTRPLE - GFP Tag - V

Restriction Sites: SgfI-MluI

Cloning Scheme:



Plasmid Map:


ACCN: NM_004013

ORF Size: 3675 bp

OTI Disclaimer: The molecular sequence of this clone aligns with the gene accession number as a point of reference only. However, individual transcript sequences of the same gene can differ through naturally occurring variations (e.g. polymorphisms), each with its own valid existence. This clone is substantially in agreement with the reference, but a complete review of all prevailing variants is recommended prior to use. [More info](#)

OTI Annotation: This clone was engineered to express the complete ORF with an expression tag. Expression varies depending on the nature of the gene.

Components: The ORF clone is ion-exchange column purified and shipped in a 2D barcoded Matrix tube containing 10ug of transfection-ready, dried plasmid DNA (reconstitute with 100 ul of water).

Reconstitution Method:

1. Centrifuge at 5,000xg for 5min.
2. Carefully open the tube and add 100ul of sterile water to dissolve the DNA.
3. Close the tube and incubate for 10 minutes at room temperature.
4. Briefly vortex the tube and then do a quick spin (less than 5000xg) to concentrate the liquid at the bottom.
5. Store the suspended plasmid at -20°C. The DNA is stable for at least one year from date of shipping when stored at -20°C.

RefSeq: [NM_004013.2](#), [NP_004004.1](#)

RefSeq Size: 7410 bp

RefSeq ORF: 3678 bp

Locus ID: 1756

UniProt ID: [P11532](#)

Cytogenetics: Xp21.2-p21.1

Domains: ZnF_ZZ, WW, spectrin

Protein Pathways: Arrhythmogenic right ventricular cardiomyopathy (ARVC), Dilated cardiomyopathy, Hypertrophic cardiomyopathy (HCM), Viral myocarditis

Gene Summary: This gene spans a genomic range of greater than 2 Mb and encodes a large protein containing an N-terminal actin-binding domain and multiple spectrin repeats. The encoded protein forms a component of the dystrophin-glycoprotein complex (DGC), which bridges the inner cytoskeleton and the extracellular matrix. Deletions, duplications, and point mutations at this gene locus may cause Duchenne muscular dystrophy (DMD), Becker muscular dystrophy (BMD), or cardiomyopathy. Alternative promoter usage and alternative splicing result in numerous distinct transcript variants and protein isoforms for this gene. [provided by RefSeq, Dec 2016]