

Product datasheet for **RG212710**

CEP104 (NM_014704) Human Tagged ORF Clone

Product data:

Product Type:	Expression Plasmids
Product Name:	CEP104 (NM_014704) Human Tagged ORF Clone
Tag:	TurboGFP
Symbol:	CEP104
Synonyms:	CFAP256; GlyBP; JBTS25; KIAA0562; ROC22
Mammalian Cell Selection:	Neomycin
Vector:	pCMV6-AC-GFP (PS100010)
E. coli Selection:	Ampicillin (100 ug/mL)



[View online »](#)

ORF Nucleotide Sequence:

>RG212710 representing NM_014704
 Red=Cloning site Blue=ORF Green=Tags(s)

TTTTGTAATACGACTCACTATAGGGCGGCCGGAATTCGTGCGACTGGATCCGGTACCGAGGAGATCTGCC
 GCC**CGGATCGCC**

ATGCCCCACAAGATTGGATTTGTAGTCGTGAGCTCATCTGGACACGAAGACGGCTTCAGTGCCCGGAGC
 TCATGATCCACGCGCAACTGTCAGTGGGTGGCGTACCTAGATTTTGCAGTTTCCACAAGAAATTTGT
 CCTTCAAATGGTGGAGAGATGTCGAATAAGGAACTGCAGTACTTGTCTACCAGTATATGATTTCAAGT
 AAAATTGAGTTCTACATTAGTGAAGCTTGCCTGAATATTTGCACCCTATCAAGCAGAGCGGTTTCGAA
 GACTTGGCTACGTGTCTCTGTGATAATGAAAAGACAGGTTGCAAAGCCCGGAACTAAAATCAGTTTA
 TGTGGATGCAGTAGGACAATTTCTTAACTGATTTTTACCAAAACCATGTCAACAAATACAACATATAT
 AATCAGTTGCTTTGGTTGCCATAAATATCATTGGAGACCCTGCAGATTTAGTGTGAAAGCAATACTG
 CCTCTCGAGAGAAGTTGATTGACCACTACCTTGGGCACAACAGCGAGGACCCTGCTCTAGAAGGAACGTA
 CGCCAGGAAATCTGACTATATCTCTCCGCTAGATGACTTACTTTTGTATGTACCAAGATCCAGAAGTT
 GCACAGATCATACGAAAATTAGATGAAAGAAAACGGGAAGCTGTCCAAAAGGAACGCTATGATTATGCCA
 AGAAACTAAAACAAGCCATTGCTGATTTGCAAAAAGGTTGGTGAGCGCCTTGGGAGGTATGAGGTAGAGAA
 ACGCTGTGCCGTGGAGAAGGAAGACTACGATCTCGCAAGGAGAAGAAGCAGCAGATGGAGCAGTATCGT
 GCCGAGGTGTACGAGCAGCTGGAGCTGCACAGCCTCCTGGATGCCGAGCTGATGCGAAGACCTTTTGATT
 TGCCCCCTCAGCCCTCGCTCGTTCTGGCAGTCTTGGCCACAAAAGCCAATGCCCTCACTACCACAAC
 GGAAGAAAAGGAACAGAAAACAGTTTGCAGAACCTTTCCTTCAGGAAAAGCCTTCATCATATTTCTCTA
 ACTATTTCTCCTCAGCATTCTGCAGTAGACCCGTTACTCCCTGCCACAGATCCTCATCAAAGATCAATG
 CAGAGCCCTGCCCTACGATGAGCGGCTCTTCCAGCTATTCGTAAGCATTATGGGGAGGCAGTGTGGA
 GCCGAAAATGAGTAATGCAGACATCAGCGATGCTCGGAGGGGAGGCATGTTAGGGGAGCCAGAGCCCTTA
 ACCGAGAAGGCCCTTGAGAGAAGCCAGCTCTGCCATCGATGTGTTGGGAGAAACCTTGTTGCTGAGGCC
 ATTGTAAGACGTGGTCTACCGAGAGGATGCACTGCTTGCCTTGTCTAAGAAGTTAATGAAATGCCTGT
 TGGAACCCCAAAAAGAAGATTTAAAGAACACACTGAGAGCATCCGTCTTCTCGTTAGAAGAGCCATAAAG
 GACATTGTGACCTCCGTTTTTTCAGGCTTCTTTGAAATGTTGAAAATGATCATTACACAATATTTCTTA
 AACATAAACTGAGTAACTTGAACAGCTCACTGTGTGGAGAGGACCATTCCCGTTTTGCTCACCAGAAC
 TGGAGATTTCTTCCCGCTCCGCTCACAGCTGCAAAATTTTATTCAGGAAATGGCCTTGTTAAAGAA
 GTTAAGTCTCTCAAATTAATCCATCCTACCTGGTGCAGCATTGAAAGCAAACCTTCAGTTACCTGG
 CAATGAGTCAGATGGGCCTCCTGGCCCGCTGCTGAAAGACCTGGGCACTGGCAGCTCGGCTTCCCAT
 TGACAACGTGATGAAGTTTTAGTGTGAGTGCCTGGAGCATAGAGTGTATGAGGTCGCGGAGACGGCGGT
 CGAATTATTTGGACATGTACAGACAGCACCAGGCTTCCATCCTGGAGTACCTTCCCTCCAGACGACAGCA
 ACACACGCAGGAACATTTCTACAAAACAATTTTTGAGGGATTTGCTAAAATAGATGGCAGAGCTACAGA
 TGCTGAGATGAGGGCACGGAGAAAAGCGGCTACAGAAGAAGCAGAAAAACAAAAGAAAGAAATAAAA
 GCTTTACAAGGGCAGCTGGCAGCACTGAAAGAAATTCAGGCTGAAGTTCAGGAAAAGAAAGTGTGCTG
 TGAAGCCAAAAGAAATCAGGACATTCAGGAGGGAAAAGCAGCCCTGCTGAAGCTCTGGGAATCCCGGATGA
 GCACTATCTAGATAATTTGTGTATTTTTTGTGGGAAAGGAGTGAATCCTTCACAGAGAAAGGCTGGAT
 CTCCACTACTGGAAGCACTGTCTCATGCTGACAAGATGTGACCACTGCAACAGGTGGTCGAGATATCCA
 GTCTGACGGAGCACTTGTGACGGAATGTGACAAAAAAGACGGGTTTGGAAAGTGTACCCTTGCAGTGA
 GGCTGTTTTCAAGGAAGAGCTGCCAGACACATAAAACACAAGGATTGCAACCCTGCCAAACCGGAGAAG
 CTGGCAAACCGGTGTCCCTGTGTATGAGAACTTCAAGCCTGGAGAAGAGGCATGGAAAGCTCACCTGA
 TGGGCCACGGCTGCACGATGAACCTGCGCAAGACACACATTTGCAAGAGCCCGGCACTGCAGCC
 AGGGAAAAGCTCAGCTGTGGCCGATCAGGCCCTTGGGGTCAAAGGCCGAAGCAAGATCCCCACCCCG
 AAGGGCGGACTGAGCAAGAGCTCCAGCAGGACGTACGCCAAGCGC

ACGCGTACGCGGCCGCTCGAG – GFP Tag – GTTTAA

Protein Sequence: >RG212710 representing NM_014704
 Red=Cloning site Green=Tags(s)

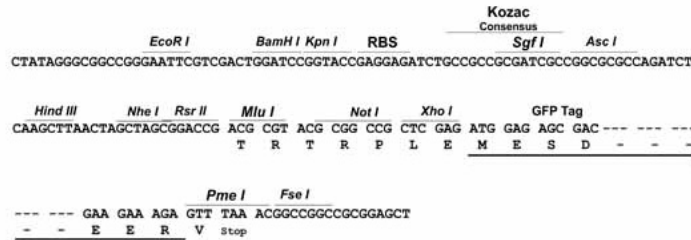
MPHKIGFVVVSSSGHEDGFSARELMIHAPTVSGWRSRPFQFPQEIVLQMVERCRIRKLQLLAHQYMISS
 KIEFYISESLPEYFAPYQAERFRLGYVSLCDNEKTGCKARELKSYYVDAVGQFLKLI FHQNHVKNYNIY
 NQVALVAINIIGDPADFDESNTASREKLI DHYLGHNSEDPALLEGTYARKSDYISPLDDLAFDMYQDPEV
 AQIIRKLDERKREAVQKERYDYAKLQAIADLQKVGERLGRYVEKRCAVEKEDYDLAKEKKQQMEQYR
 AEVYEQLELHSLDLDAELMRRPFDLPLQPLARSGSPCHQKPMPSLPQLEERTENQFAEPFLQEKPSYSL
 TISQHSADVDPPLPATDHPKINAESLPYDERPLPAIRKHYGEAVVEPEMSNADI SDARRGMLGPEPEL
 TEKALREASSAIDVLGETLVAEAYCKTWSYREDALLALSKKLMEMPVGTPEKDLKNTLRASVFLVRRRAIK
 DIVTSVFQASLKKMIITQYIPKHKLSKLETAHCVERTIPVLL TRTGDSSARLRVTAANFIQEMALFKE
 VKSLQIIPSYLVQPLKANSSVHLAMSQMLLARLLKDLGTGSSGFTIDNVMKFSVSALEHRVYEVRETAV
 RIILDMYRQHQASILEYLPDDSNTRRNILYKTI FEGFAKIDGRATDAEMRARRKAATEEA EKQKKEEIK
 ALQGQLAALKEIQAEVQEKESDAVKPKNQDIQGGKAAPAEALGIPDEHYLDNLCIFCGERSESFTEEGLD
 LHYWKHCLMLTRCDHCKQVVEISSL TEHLLTECDKKGDFGKCYRCSEAVFKEELPRHIKHKDCNPAKPEK
 LANRCPLCHENFSPGEEAWKAHLMGPAGCTMNLKTHILQKAPALQPGKSSAVAASGPLGSKAGSKIPTP
 KGGLSKSSRITYAKR

TRTRPLE - GFP Tag - V

Restriction Sites: SgfI-MluI

Cloning Scheme:

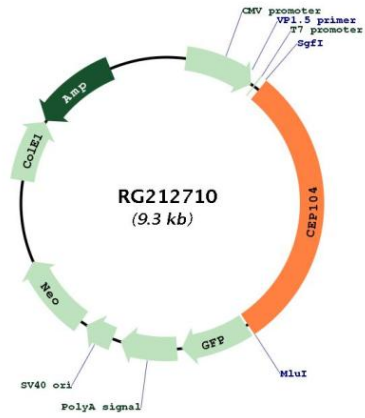
Cloning sites used for ORF Shuttling:



ACCN: NM_014704

ORF Size:	2775 bp
OTI Disclaimer:	The molecular sequence of this clone aligns with the gene accession number as a point of reference only. However, individual transcript sequences of the same gene can differ through naturally occurring variations (e.g. polymorphisms), each with its own valid existence. This clone is substantially in agreement with the reference, but a complete review of all prevailing variants is recommended prior to use. More info
OTI Annotation:	This clone was engineered to express the complete ORF with an expression tag. Expression varies depending on the nature of the gene.
Components:	The ORF clone is ion-exchange column purified and shipped in a 2D barcoded Matrix tube containing 10ug of transfection-ready, dried plasmid DNA (reconstitute with 100 ul of water).
Reconstitution Method:	<ol style="list-style-type: none">1. Centrifuge at 5,000xg for 5min.2. Carefully open the tube and add 100ul of sterile water to dissolve the DNA.3. Close the tube and incubate for 10 minutes at room temperature.4. Briefly vortex the tube and then do a quick spin (less than 5000xg) to concentrate the liquid at the bottom.5. Store the suspended plasmid at -20°C. The DNA is stable for at least one year from date of shipping when stored at -20°C.
RefSeq:	NM_014704.1 , NP_055519.1
RefSeq Size:	5848 bp
RefSeq ORF:	2778 bp
Locus ID:	9731
UniProt ID:	O60308
Cytogenetics:	1p36.32
Gene Summary:	This gene encodes a centrosomal protein required for ciliogenesis and for ciliary tip structural integrity. The mammalian protein contains three amino-terminal hydrophobic domains, two glycosylation sites, four cysteine-rich motifs, and two regions with homology to the glutamate receptor ionotropic, NMDA 1 protein. During ciliogenesis, the encoded protein translocates from the distal tips of the centrioles to the tip of the elongating cilium. Knockdown of the protein in human retinal pigment cells results in severe defects in ciliogenesis with structural deformities at the ciliary tips. Allelic variants of this gene are associated with the autosomal-recessive disorder Joubert syndrome, which is characterized by a distinctive mid-hindbrain and cerebellar malformation, oculomotor apraxia, irregular breathing, developmental delay, and ataxia. [provided by RefSeq, Feb 2016]

Product images:



Circular map for RG212710