

## Product datasheet for **RG212697**

### PHC2 (NM\_004427) Human Tagged ORF Clone

#### Product data:

Product Type:	Expression Plasmids
Product Name:	PHC2 (NM_004427) Human Tagged ORF Clone
Tag:	TurboGFP
Symbol:	PHC2
Synonyms:	EDR2; HPH2; PH2
Mammalian Cell Selection:	Neomycin
Vector:	pCMV6-AC-GFP (PS100010)
E. coli Selection:	Ampicillin (100 ug/mL)
ORF Nucleotide Sequence:	>RG212697 representing NM_004427 Red=Cloning site Blue=ORF Green=Tags(s)

TTTTGTAATACGACTCACTATAGGGCGGCCGGAATTCGTCGACTGGATCCGGTACCGAGGAGATCTGCC  
GCC**CGATCGC**C

ATGACCTCAGGGAACGGAACTCTGCCTCCAGCATCGCCGGCACTGCCCCAGAAATGGTGAGAATAAAC  
CACCACAGGCCATTGTGAAACCCAAATCCTGACGCATGTTATCGAAGGGTTTGTGATCCAGGAGGGGC  
GGAGCCTTCCCGGTGGGACGCTCGTCCCTGCTGGTGGGAATCTCAAGAAGAAGTATGCACAGGGGTT  
CTGCCTGAGAACTTCCACAGCAGGATCACACCACCACCTGACTCGGAGATGGAGGAGCCCTATCTGC  
AAGAATCAAAGAGGAGGGTGTCCCTCAAATCAAGTGTGAGCTCTGTGGCCGGTGGACTTTGCCTA  
TAAGTTCAAGCGTTCCAAGCGCTTCTGTTCCATGGCTTGTGCAAAGAGGTACAACGTGGGATGCACAAA  
CGGGTGGGACTTTTCCACTCAGACCGGAGCAAGCTGCAGAAGGCAGGAGCTGCGACCCACAACCGCGTC  
GGGCCAGCAAAGCCAGTCTGCCACCACTTACCAAGGATACCAAGAAGCAGCCAACAGGCACTGTGCCCT  
TTCGGTACTGCTGCTTTCAGCTAACACACAGCCAGGAAGACTCCAGCCGTTGCTCAGATAACTCAAGC  
TATGAGGAACCTTGTCAACCATCTCAGCCAGCTCATCTACTCCCGCCGGCACAAGGCCAGCGGGACC  
TGGAGTCCCCGACATGCATATGCGGGACCTGGTGGGCATGGGACCACTTCTGCCAAGTGAGCCAC  
CAAGTGAATGTAGAAGACGTCTACGAATTCATCCGCTCTCTGCCAGGCTGCCAGGAGATAGCAGAGGAA  
TTCCGTGCCAGGAAATCGACGGCAAGCCCTGCTGCTGCTCAAGGAGGACCACCTGATGAGCGCCATGA  
ACATCAAGCTGGGCCCCCCTGAAGATCTACGCCGCATCAGCATGCTCAAGGACTCC

**ACGCGT**ACGCGGCCGCTCGAG - GFP Tag - GTTTAA



[View online »](#)

**Protein Sequence:** >RG212697 representing NM\_004427  
Red=Cloning site Green=Tags(s)

MTSGNGNSASSIAGTAPQNGENKPPQAIVKPQILTHVIEGFVIQEGAEPFPVGRSSLLVGNLKKKYAQGF  
 LPEKLPQQDHTTTTDDSEMEEPYLQESKEEGAPLKLKCELCGRVDFAYKFKRSKRFCSMACAKRYNVGCTK  
 RVGLFHSDRSKLQKAGAATHNRRRRASKASLPPLTKDTKKQPTGTVPLSVTAAALQLTHSQEDSSRCSDNSS  
 YEEPLSPIASASSTSRRRQGRDLELPDMHMRDLVGMGHHFLPSEPTKWNVEDVYEFIRSLPGCQEI AEE  
 FRAQEIDGQALLLLKEDHLMSAMNIKLGPAIKIYARISMLKDS

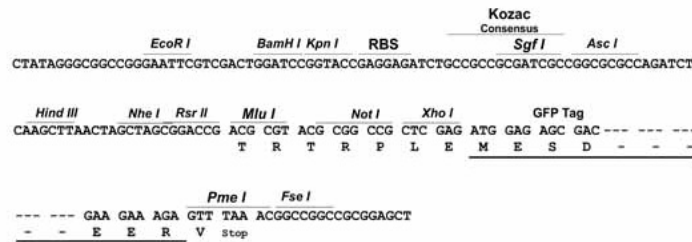
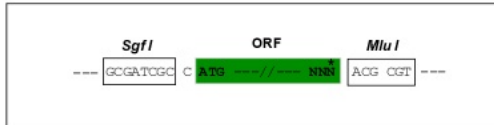
TRTRPLE - GFP Tag - V

**Restriction Sites:**

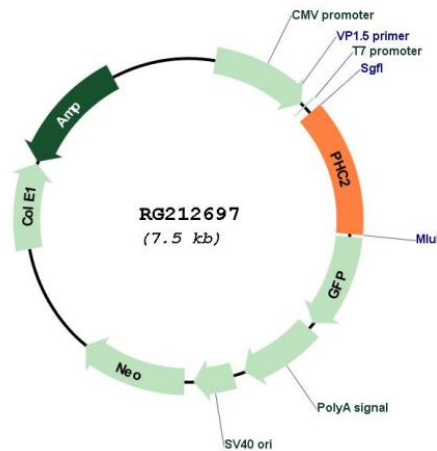
Sgfl-MluI

**Cloning Scheme:**

Cloning sites used for ORF Shuttling:



**Plasmid Map:**



**ACCN:** NM\_004427

**ORF Size:** 969 bp

<b>OTI Disclaimer:</b>	The molecular sequence of this clone aligns with the gene accession number as a point of reference only. However, individual transcript sequences of the same gene can differ through naturally occurring variations (e.g. polymorphisms), each with its own valid existence. This clone is substantially in agreement with the reference, but a complete review of all prevailing variants is recommended prior to use. <a href="#">More info</a>
<b>OTI Annotation:</b>	This clone was engineered to express the complete ORF with an expression tag. Expression varies depending on the nature of the gene.
<b>Components:</b>	The ORF clone is ion-exchange column purified and shipped in a 2D barcoded Matrix tube containing 10ug of transfection-ready, dried plasmid DNA (reconstitute with 100 ul of water).
<b>Reconstitution Method:</b>	<ol style="list-style-type: none"><li>1. Centrifuge at 5,000xg for 5min.</li><li>2. Carefully open the tube and add 100ul of sterile water to dissolve the DNA.</li><li>3. Close the tube and incubate for 10 minutes at room temperature.</li><li>4. Briefly vortex the tube and then do a quick spin (less than 5000xg) to concentrate the liquid at the bottom.</li><li>5. Store the suspended plasmid at -20°C. The DNA is stable for at least one year from date of shipping when stored at -20°C.</li></ol>
<b>RefSeq:</b>	<a href="#">NM_004427.4</a>
<b>RefSeq Size:</b>	2597 bp
<b>RefSeq ORF:</b>	972 bp
<b>Locus ID:</b>	1912
<b>UniProt ID:</b>	<a href="#">Q8IXK0</a>
<b>Cytogenetics:</b>	1p35.1
<b>Gene Summary:</b>	In <i>Drosophila melanogaster</i> , the 'Polycomb' group (PcG) of genes are part of a cellular memory system that is responsible for the stable inheritance of gene activity. PcG proteins form a large multimeric, chromatin-associated protein complex. The protein encoded by this gene has homology to the <i>Drosophila</i> PcG protein 'polyhomeotic' (Ph) and is known to heterodimerize with EDR1 and colocalize with BMI1 in interphase nuclei of human cells. The specific function in human cells has not yet been determined. Two transcript variants encoding different isoforms have been found for this gene. [provided by RefSeq, Jul 2008]