

Product datasheet for **RG212693**

MGAT5B (NM_198955) Human Tagged ORF Clone

Product data:

Product Type:	Expression Plasmids
Product Name:	MGAT5B (NM_198955) Human Tagged ORF Clone
Tag:	TurboGFP
Symbol:	MGAT5B
Synonyms:	GnT-IX; GnT-VB
Mammalian Cell Selection:	Neomycin
Vector:	pCMV6-AC-GFP (PS100010)
E. coli Selection:	Ampicillin (100 ug/mL)



[View online »](#)

ORF Nucleotide Sequence:

>RG212693 representing NM_198955
 Red=Cloning site Blue=ORF Green=Tags(s)

TTTTGTAATACGACTCACTATAGGGCGGCCGGAATTCGTCGACTGGATCCGGTACCGAGGAGATCTGCC
 GCC**CGGATCGCC**

ATGCACTCATTCGTAACAAATTTGTGCAGCCGGTACGTGGTGGAGCGTCAGGGCAGCATGGCCCTTCTG
 CCTCCTGACCCGCTCCTTCTCTCCGAGGCTTTTTGTCTGGGCATCGGCTTCTTCACTCTCTGCTT
 CCTGATGACGTCTCTGGGAGGCCAGTTCTCGGCCCGGCGCCTGGGGGACTCGCCATTACCATCCGCACA
 GAAGTGATGGGGGGCCCCGAGTCCCGCGCGTCTCGCAAGATGAGCGACCTGCTGGAGCTGATGGTGA
 AGCGCATGGACGCACTGGCCAGGCTGGAGAACAGCAGTGAGCTGCACCGGGCCGGCGGACCTGCACTT
 TCCCGCAGACAGGATGCCCCCTGGGGCCGGCTCATGGAGCGGATCCAGGCTATTGCCAGAACGTCTCC
 GACATCGTGTGAAGGTGGACCAGATCCTGCGCCACAGTCTGCTCCTGCACAGCAAGGTGTCAGAAGGCC
 GGGCGGACAGTGTGAGGCACCCAGTGACCCCAAGTTCCTGACTGCTCAGGGAAGGTGGAGTGGATGCC
 TGCCCGTGGACCTCTGACCCCTGCTACGCCTTCTTTGGGGTGGACGGCACCGAGTGTCTCTTCTCATC
 TACCTCAGTGAGTTCGAGTGGTTCTGCCCCCGCTGCCCTGGAGGAACAGACGGCTGCCAGAGGGCAC
 CCAAGCCCTCCCAAGTCCAGGCAGTTTTCCGAAGCAACCTGTCCACCTTCTGGACCTGATGGGCAG
 CGGAAGGAGTCCCTGATCTTATGAAGAAGCGGACCAAGAGGCTCACAGCCAGTGGGCGCTGGCTGCC
 CAGCGCTGGCACAGAAGCTGGGGGCCACCCAGAGGGACCAAGCAGATCCTGGTCCACATCGGCTTCC
 TGACGGAGGAGTCCGGGACGTGTTACGCCCTCGGGTCTGAAGGGCGGGCCCTAGGGGAGATGGTGA
 GTGGGCGGACATTCTGACTGCACTCTATGCTCTGGGCCATGGCTGCGGGTACAGTCTCCCTGAAGGAG
 CTGCAGAGTAACCTAGGGGTACCGCCAGGCCGGGAAGCTGCCGCTCACCATGCCCTGCCCTTCGACC
 TCATCTACACCGACTACCACGGCTGCAGCAGATGAAGCGGCACATGGGACTCTCCTTCAAGAAGTACCG
 GTGCCGAATCAGGGTTCATCGACACCTTCGGGACGGAACCTGCGTACAACCACGAGGAGTACGCCACGCTG
 CACGGCTACCGGACCAACTGGGGCTACTGGAACCTCAACCCCAAGCAGTTTATGACCATGTTTCTCATA
 CCCCCGACAACCTCTTATGGGCTTCGTGTCGAGGAGCTCAACGAGACGGAGAAGCGGCTCATCAAAGG
 CGGCAAGGCCAGCAACATGGCCGTGGTGTACGGCAAGGAGGCGAGCATCTGGAAGGGGAAGGAGAAGTTC
 CTGGGCATCCTGAACAAATACATGGAGATCCATGGCACCGTGTACTACGAGAGCCAGCGCCCCCGAGG
 TGCCAGCCTTTGTGAAGAACCACGGCTCTTACCGCAGCCTGAGTTTACGAGCTGCTGCGCAAGGCCAA
 ACTCTTATCGGGTTTGGCTTCCCCTACGAGGGCCCCGCCCTGGAGGCCATCGCAATGGTTGCATC
 TTCTGCACTCCGCTTACAGCCGCCACAGCTCCCTCAACCAGGATCTTCCGAGGCAAGCCCACCT
 CCAGAGAGGTGTTCTCCAGCATCCCTACGCGGAGAATTCATCGCAAGCCCCACGTGTGGACAGTCTGA
 CTAACAACACTCAGAGGAGTTTGAAGCAGCCATCAAGGCCATTATGAGAAGTACAGGTAGACCCCTACCTA
 CCCTACGAGTACACCTGCGAGGGGATGCTGGAGCGGATCCACGCCTACATCCAGCACCAGGACTTCTGCA
 GAGCTCCAGACCTGCCCTACCAGAGGCCACGCCCGCAGAGCCCTTTGTCTGGCCCCAATGCCAC
 CCACCTCGAGTGGGCTCGGAACACCAGCTTGGCTCCTGGGGCTGGCCCCCGCGCACGCCCTGCGGGCC
 TGGCTGGCCGTGCTGGGAGGGCTGCACCGACACCTGCCTGGACCACGGGCTAATCTGTGAGCCCTCT
 TCTTCCCCTTCTGAACAGCCAGGACGCCTTCTCAAGCTGCAGGTGCCCTGTGACAGCACCAGTCTGGA
 GATGAACCACCTGTACCCGGCGTTCCGCCAGCCTGGCCAGGAGTCTACCTGCAGAAGGAGCCTCTGCTC
 TTCAGCTGCGCCGCTCCAACCAAGTACCGCCGGCTCTGCCCTGCCGCGACTTCCGCAAGGGCCAGG
 TGGCCTTGTGCCAGGGCTGTCTG

ACGCGTACGCGGCCGCTCGAG – GFP Tag – GTTTAA

Protein Sequence: >RG212693 representing NM_198955
 Red=Cloning site Green=Tags(s)

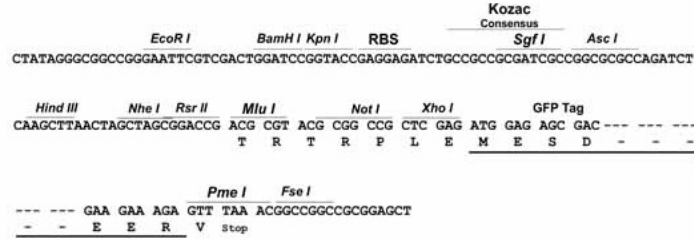
MHSFVKHLCSRYVVERQGTMALPALLTRLLPLRRLFVLGIGFFTLCLMTSLGGQFSARRLGDSPFTIRT
 EVMGGPESRGVLRKMSDLELMVKRMDALARLENSSSELHRAGGDLHFPADRMPPGAGLMERIQAIQNV
 DIAVKVDQILRHSLLLHSHKVSSEGRRDQCEAPSDPKFPDCSGKVEWMRARWTSAPCYAFFGVDGTECSFLI
 YLSEVEWFCPPLPWRNQTAAQRAPKPLPKVQAVFRSNLHLLDLMSGKESLIFMKKRTKRLTAQWALAA
 QRLAQKLGATQRDQKQILVHIGFLTEESGDVFSRVLKGGPLGEMVQWADILTALYVLGHGLRVTVSLKE
 LQSNLGVPPGRGSCPLTMPLPFDLIYTDYHGLQQMKRHMGLSFKKYRCRIRVIDTFGTEPAYNHEEYATL
 HGYRTNWGYWNLNPKQFMTMFPHTPDNSFMGFVSEELNETEKRLIKGGKASNMAVYVYKEASIWKGKEKF
 LGILNKYMEIHGTVYVESQRPEVPAFVKNHGLLPQPEFQQLLRKAKLFIGFGFPYEGPAPLEAIANGCI
 FLQSRFSPPHSSLNHEFFRKGKPTSREVFSQLPYAENFIGKPHVWTVDYNNSEEFEEAAIKAIMRTQVDPYL
 PYEYTCGMLERIHAYIQHQDFCRAPDPALPEAHAPQSPFVLPNATHLEWARNTSLAPGAWPPAHALRA
 WLAVPGRACDTCLDHGLICEPSFFPFLNSQDAFLKLVPCDSTESEMNHLYPAFAQPGQECYLQKEPLL
 FSCAGSNTKYRRLCPCRDVFRKGGQVALCQGCL

TRTRPLE - GFP Tag - V

Restriction Sites: SgfI-MluI

Cloning Scheme:

Cloning sites used for ORF Shutting:

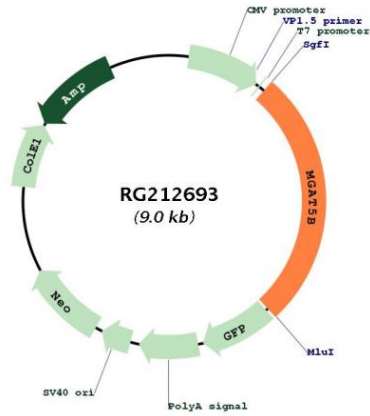


ACCN: NM_198955

ORF Size: 2403 bp

OTI Disclaimer:	<p>Due to the inherent nature of this plasmid, standard methods to replicate additional amounts of DNA in E. coli are highly likely to result in mutations and/or rearrangements. Therefore, OriGene does not guarantee the capability to replicate this plasmid DNA. Additional amounts of DNA can be purchased from OriGene with batch-specific, full-sequence verification at a reduced cost. Please contact our customer care team at custsupport@origene.com or by calling 301.340.3188 option 3 for pricing and delivery.</p> <p>The molecular sequence of this clone aligns with the gene accession number as a point of reference only. However, individual transcript sequences of the same gene can differ through naturally occurring variations (e.g. polymorphisms), each with its own valid existence. This clone is substantially in agreement with the reference, but a complete review of all prevailing variants is recommended prior to use. More info</p>
OTI Annotation:	<p>This clone was engineered to express the complete ORF with an expression tag. Expression varies depending on the nature of the gene.</p>
Components:	<p>The ORF clone is ion-exchange column purified and shipped in a 2D barcoded Matrix tube containing 10ug of transfection-ready, dried plasmid DNA (reconstitute with 100 ul of water).</p>
Reconstitution Method:	<ol style="list-style-type: none">1. Centrifuge at 5,000xg for 5min.2. Carefully open the tube and add 100ul of sterile water to dissolve the DNA.3. Close the tube and incubate for 10 minutes at room temperature.4. Briefly vortex the tube and then do a quick spin (less than 5000xg) to concentrate the liquid at the bottom.5. Store the suspended plasmid at -20°C. The DNA is stable for at least one year from date of shipping when stored at -20°C.
RefSeq:	<p>NM_198955.1, NP_945193.1</p>
RefSeq Size:	<p>4068 bp</p>
RefSeq ORF:	<p>2406 bp</p>
Locus ID:	<p>146664</p>
UniProt ID:	<p>Q3V5L5</p>
Cytogenetics:	<p>17q25.2</p>
Protein Families:	<p>Transmembrane</p>
Protein Pathways:	<p>Metabolic pathways, N-Glycan biosynthesis</p>
Gene Summary:	<p>The MGAT5B gene encodes a beta-1,6-N-acetylglucosaminyltransferase (EC 2.4.1.155) that functions in the synthesis of complex cell surface N-glycans (Kaneko et al., 2003 [PubMed 14623122]).[supplied by OMIM, Nov 2008]</p>

Product images:



Circular map for RG212693