

Product datasheet for **RG212692**

NFAT2 (NFATC1) (NM_006162) Human Tagged ORF Clone

Product data:

Product Type:	Expression Plasmids
Product Name:	NFAT2 (NFATC1) (NM_006162) Human Tagged ORF Clone
Tag:	TurboGFP
Symbol:	NFAT2
Synonyms:	NF-ATC; NF-ATc1.2; NFAT2; NFATc
Mammalian Cell Selection:	Neomycin
Vector:	pCMV6-AC-GFP (PS100010)
E. coli Selection:	Ampicillin (100 ug/mL)



[View online »](#)

**ORF Nucleotide
Sequence:**

>RG212692 representing NM_006162
 Red=Cloning site Blue=ORF Green=Tags(s)

TTTTGTAATACGACTCACTATAGGGCGGCCGGGAATTCGTCGACTGGATCCGGTACCGAGGAGATCTGCC
 GCC**CGGATCGCC**

ATGCCAAGCACCAGCTTTCCAGTCCCTTCCAAGTTTCCACTTGGCCCTGCGGCTGCGGTCTTCGGGAGAG
 GAGAAACTTTGGGGCCCGCGCCGCGCGCGCCGCGCACCATGAAGTCAGCGGAGGAAGAACAACACTATGGCTA
 TGCATCCTCCAACGTCAGCCCGCCCTGCCGCTCCCCACGGCGCACTCCACCCTGCCGGCCCGTGCCAC
 AACCTTCAGACCTCCACACCGGGCATCATCCCGCGCGGATCACCCCTCGGGGTACGGAGCAGCTTTGG
 ACGGTGGGCCCGGGCTACTTCTCTCTCCGGCCACACCAGGCCTGATGGGGCCCTGCCCTGGAGAG
 TCCTCGCATCGAGATAACCTCGTGCTTGGGCTGTACCACAACAATAACCAAGTTTTTCCACGATGTGGAG
 GTGAAGAGCTCCTCCCTAGCTCCAACGGTCCCCCTCCACGGCCACGCTGAGTCTGCCAGCCTGGAGG
 CCTACAGAGACCCCTCGTGCCTGAGCCCGCCAGCAGCCTGTCTCCCGAGCTGCAACTCAGAGGCCTC
 CTCTACGAGTCCAACACTACTCGTACCCGTACGCGTCCCCCAGAGCTCGCATGGCAGTCTCCCTGCGTG
 TCTCCAAAGACCAGGACCCCGAGGAGGGCTTTCCCCGCGGGCTGGGGGCTGCACACTGCTGGGTCCCG
 CGCGGCACTCCCCCTCCACCTCGCCCCGCGCCAGCGTCACTGAGGAGAGCTGGTGGGTGCCCGCTCCTC
 CAGACCCGCGTCCCTTGCAACAAGAGGAAGTACAGCCTCAACGGCCGCGAGCCGCCCTACTCACCCAC
 CACTCGCCACGCGTCCCCGACGGCTCCCCGCGGGTCAAGCTGACCGAGCTCGTGGTTGGGCAACA
 CCACCCAGTACACCAGCTCGGCCATCGTGGCCGCATCAACGCGTGACCAACGACAGCAGCCTGGACCT
 GGGAGATGGCGTCCCTGTCAAGTCCCGCAAGACCACCTGGAGCAGCCGCCCTCAGTGGCGCTCAAGGTG
 GAGCCCGTGGGGAGGACTGGGCAGCCCCCGCCCCGGCCGACTTCGCGCCGAAGACTACTCCTCTT
 TCCAGCACATCAGGAAGGGCGGCTTCTGCGACAGTACCTGGCGGTGCCGAGCACCCTACCAAGTGGC
 GAAGCCCAAGCCCTGTCCCTACGTCTACATGAGCCGACCCTGCCCGCCTGGACTGGCAGCTGCCG
 TCCCACTCAGGCCGTATGAGCTTCGGATTGAGGTGACGCCAAGTCCCACCAGGACCCACTACGAGA
 CGGAGGGCAGCCGGGGGCGTGAAGGCGTCCGCGGAGGACACCCATCGTGCAGCTGCATGGCTACTT
 GGAGAATGAGCCGCTGATGCTGCAGTTTTTATTGGGACGGCGGACGACCCGCTGCTGCGCCGACGCGC
 TTCTACCAGGTGCACCGCATCACAGGGAAGACCGTGTCCACCACCAGCCAGGAGCCATCCTCTCCAACA
 CCAAAGTCTGGAGATCCCACTCCTGCCGAGAACAGCATGCGAGCCGTCATTGACTGTGCCGAATCCT
 GAAACTCAGAACTCCGACATTGAACCTCGAAAGGAGAGACGGACATCGGGAGGAAGAACAACCGGTA
 CGGCTGGTGTCCGCTTACGTCCCGCAACCCAGCGCCGACGCTGTCCCTGCAGGTGGCCTCAACC
 CCATCGAATGCTCCAGCGCTCAGCTCAGGAGTGCTCTGGTGGAGAAGCAGAGCAGGACAGCTATCC
 GGTCTGGGGGGGAAGAAGATGGTCTGTCTGGCCACAACCTCCTGCAGGACTCCAAGGTCAATTTTCGTG
 GAGAAAGCCCCAGATGGCCACCATGTCTGGGAGATGGAAGCGAAAAGTACCGGGGACCTGTGCAAGCCGA
 ATCTCTGGTGGTTGAGATCCCGCCATTTCCGAAATCAGAGGATAACCAGCCCGTTACAGTCAGTTTCTA
 CGTCTGCAACGGGAAGAGAAAGCGAAGCCAGTACCAGCGTTTACCTACCTTCCCGCCAACGTTCCAATT
 ATAAAAACAGAACCCACTGATGATTATGAGCCTGCTCAAACCTGTGGACCGGTGAGCCAGGGTTAAGTC
 CTCTCCCAAGACCATACTACAGCCAGCAGCTCGGATGCCACCCGACCCAGCTCCTGCCTCGTGGCCGG
 CTTCCCGCCCTGTCCGCAGAGAAGCACCCCTGATGCCAGCGGCCCTGGCGTGAGCCCCAAGCTCCACGAC
 CTTTCTCCCGCTGCCTACACCAAGGGCGTTGCCAGCCCGGCCACTGTACCTCGGACTCCCGCAGCCGG
 CCGGAGAGGCCCCCGCCGTCCAGGACGTGCCAGGCCAGTGCCACGACCCCGGCTCGCCGGGACGCC
 ACCCCCGGCCCTGCTGCCACAGCAG

AG**CGGACCG**ACGCGTACGCGGCCGCTCGAG - GFP Tag - GTTTAA

Protein Sequence: >RG212692 representing NM_006162
Red=Cloning site Green=Tags(s)

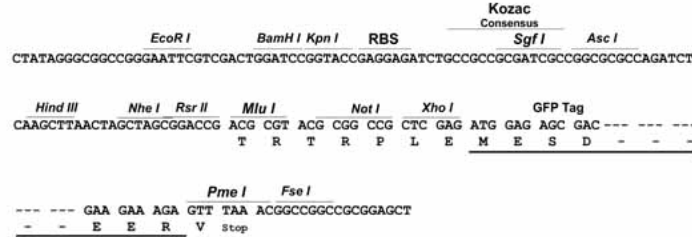
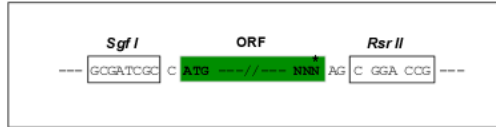
MPSTSFVPVPSKFPLGPAAAVFGRETLPAPRAGGTMKSAEEEHYGYASSNVSPALPLPTAHSTLPAPCH
NLQTSTPGIIPPADHPSGYGAALDGGPAGYFLSSGHTRPDGAPALESPRIEITSCLGLYHNNNQFFHDVE
VEDVLPSSKRSPSTATLSLPSLEAYRDPSCSPASSLSSRSCNSEASSYESNYSYPYASPQTSPWQSPCV
SPKTTDPEEGFPRGLGACTLLGSPRHSPSTSPRASVTEESWLGARSSRPASPCNKRKYSLNQRQPPYSPH
HSPTSPHGSPPRVSVTDDSWLGNTTQYTSSAIVAAINALTTDSSLDLGDGVPVKSRRKTTLEQPPSVALKV
EPVGEDLGSPPPPADFAPEDYSSFQHIRKGGFCQYLAVPQHPYQWAKPKPLSPTSYMSPTLPALDWQLP
SHSGPYELRIEVQPKSHHRAHYETEGSRGAVKASAGGHPIVQLHGYLENEPLMLQLFIGTADDRLLRPHA
FYQVHRITGKTVSTTSHEAILSNTKMLEIPLLPENSMRAVIDCAGILKLRNSDIELRKGETDIGRKNTRV
RLVFRVHVPQPSGRTLSLQVASNPIECSQRSAQELPLVEKQSTDSYPVVGKKMVLSGHNFLQDSKVIFV
EKAPDGHVWEMEAKTDRDLCKPNSLVVEIPFRNQRITSPVHVSFYVCNGKRKRSQYQRFYLPANVPI
IKTEPTDDYEPAPTCGPVSQGLSPLRPYYSQQLAMPDPSSCLVAGFPQPCQRSTLMPAAPGVSPKLHD
LSPAAYTKGVASPGHCHLGLPQPAGEAPAVQDVPRPVATHPGSPGQPPALLPQQ

SGPTRRRLE - GFP Tag - V

Restriction Sites: Sgfl-RsrII

Cloning Scheme:

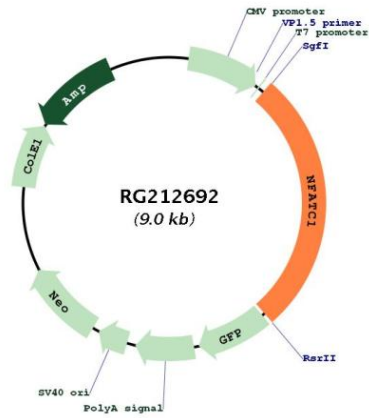
Cloning sites used for ORF Shuttling:



- ACCN:** NM_006162
- ORF Size:** 2475 bp
- OTI Disclaimer:** The molecular sequence of this clone aligns with the gene accession number as a point of reference only. However, individual transcript sequences of the same gene can differ through naturally occurring variations (e.g. polymorphisms), each with its own valid existence. This clone is substantially in agreement with the reference, but a complete review of all prevailing variants is recommended prior to use. [More info](#)
- OTI Annotation:** This clone was engineered to express the complete ORF with an expression tag. Expression varies depending on the nature of the gene.
- Components:** The ORF clone is ion-exchange column purified and shipped in a 2D barcoded Matrix tube containing 10ug of transfection-ready, dried plasmid DNA (reconstitute with 100 ul of water).

Reconstitution Method:	<ol style="list-style-type: none">1. Centrifuge at 5,000xg for 5min.2. Carefully open the tube and add 100ul of sterile water to dissolve the DNA.3. Close the tube and incubate for 10 minutes at room temperature.4. Briefly vortex the tube and then do a quick spin (less than 5000xg) to concentrate the liquid at the bottom.5. Store the suspended plasmid at -20°C. The DNA is stable for at least one year from date of shipping when stored at -20°C.
RefSeq:	NM_006162.5
RefSeq Size:	4762 bp
RefSeq ORF:	2478 bp
Locus ID:	4772
UniProt ID:	O95644
Cytogenetics:	18q23
Domains:	RHD, IPT
Protein Families:	Druggable Genome, Transcription Factors
Protein Pathways:	Axon guidance, B cell receptor signaling pathway, Natural killer cell mediated cytotoxicity, T cell receptor signaling pathway, VEGF signaling pathway, Wnt signaling pathway
Gene Summary:	<p>The product of this gene is a component of the nuclear factor of activated T cells DNA-binding transcription complex. This complex consists of at least two components: a preexisting cytosolic component that translocates to the nucleus upon T cell receptor (TCR) stimulation, and an inducible nuclear component. Proteins belonging to this family of transcription factors play a central role in inducible gene transcription during immune response. The product of this gene is an inducible nuclear component. It functions as a major molecular target for the immunosuppressive drugs such as cyclosporin A. Multiple alternatively spliced transcript variants encoding distinct isoforms have been identified for this gene. Different isoforms of this protein may regulate inducible expression of different cytokine genes. [provided by RefSeq, Jul 2013]</p>

Product images:



Circular map for RG212692