

Product datasheet for **RG212690**

PIM3 (NM_001001852) Human Tagged ORF Clone

Product data:

Product Type:	Expression Plasmids
Product Name:	PIM3 (NM_001001852) Human Tagged ORF Clone
Tag:	TurboGFP
Symbol:	PIM3
Synonyms:	pim-3
Mammalian Cell Selection:	Neomycin
Vector:	pCMV6-AC-GFP (PS100010)
E. coli Selection:	Ampicillin (100 ug/mL)
ORF Nucleotide Sequence:	>RG212690 representing NM_001001852 Red=Cloning site Blue=ORF Green=Tags(s)

TTTTGTAATACGACTCACTATAGGGCGGCCGGAATTCGTCGACTGGATCCGGTACCGAGGAGATCTGCC
GCC**CGATCGCC**

ATGCTGCTCTCCAAGTTCGGCTCCCTGGCGCACCTCTGCGGGCCCGGGCGTGGACCACCTCCCGGTGA
AGATCCTGCAGCCAGCCAAGGCGGACAAGGAGAGCTTCGAGAAGGCGTACCAGGTGGCGCCGTGCTGGG
TAGCGGCGGCTTCGGCACGGTCTACGCGGGTAGCCGCATCGCCGACGGGCTCCCGTGGCTGTGAAGCAC
GTGGTGAAGGAGCGGGTACCGAGTGGGCGAGCCTGGGCGGCGGACCGTGCCCTGGAGGTGGTGTCTGC
TGGCAAGGTGGGCGGCGGGCGGCGCGCGCGCTATCCGCTGCTGGACTGGTTCGAGCGGCCGA
CGGCTTCCTGCTGGTGTGGAGCGGCCGAGCCGCGCAGGACCTCTCGACTTATCACGAGCGCGGC
GCCCTGGACGAGCCGCTGGCGCGCGCTTCTTCGCGCAGGTGCTGGCCGCGTGCACCAGTGCACAGCT
GCGGGTCTGTCACCGCGACATTAAGGACGAAAATCTGCTTGTGGACTGCGCTCCGGAGAGCTCAAGCT
CATCGACTTCGGTTCGGGTGCGCTCAAGGACACGGTCTACACCGACTTCGACGGCACCCGAGTGTAC
AGCCCCCGGAGTGGATCCGCTACCACCGCTACCACGGGCGCTCGGCCACCGTGTGGTGTGGCGTGC
TTCTCTACGATATGGTGTGTGGGACATCCCCTTCGAGCAGGACGAGGAGATCCTCCGAGGCCCTGCT
CTTCCGGAGGAGGTCTCTCCAGAGTCCAGCAGCTGATCCGGTGGTGCCTGTCCCTGCGGCCCTCAGAG
CGGCCGTGCTGGATCAGATTGCGGCCATCCCTGGATGCTGGGGCTGACGGGGCGCCCGGAGAGCT
GTGACCTGCGGCTGTGCACCCTGACCCCTGATGACGTGGCCAGCACACGTCAGCAGCGAGAGCTTG

ACGCGTACGCGGCCGCTCGAG - GFP Tag - GTTTAA



[View online »](#)

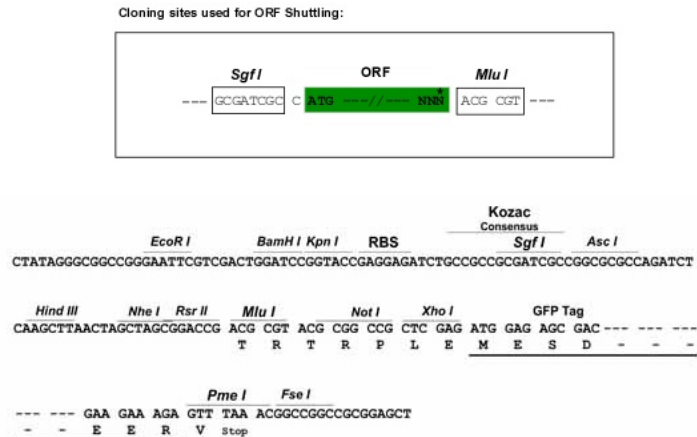
Protein Sequence: >RG212690 representing NM_001001852
 Red=Cloning site Green=Tags(s)

MLLSKFGSLAHLCPGGVDHLPVKILQPAKADKESFEKAYQVGAVLGSGGFGTVYAGSRIADGLPVAVKH
 VVKERVTEWGSLLGGATVPLEVLLRKVGAAGGARGVIRLLDWFERPDPGLLVLERPEPAQDLDFDITERG
 ALDEPLARRFFAQVLAAVRHCHSCGVVHRDIKDENLLVDLRSGELKLIDFGSGALLKDTVYDFDGTTRVY
 SPPEWIRYHRYHGRSATVWSLGVLLYDMVCGDIPFEQDEEILRGRLLFRRRVSPECQQLIRWCLSLRPSE
 RPSLDQIAAHPWMLGADGGAPESCDLRLCTLDPDDVASTTSSSESL

TRTRPLE - GFP Tag - V

Restriction Sites: SgfI-MluI

Cloning Scheme:



ACCN: NM_001001852

ORF Size: 978 bp

OTI Disclaimer: The molecular sequence of this clone aligns with the gene accession number as a point of reference only. However, individual transcript sequences of the same gene can differ through naturally occurring variations (e.g. polymorphisms), each with its own valid existence. This clone is substantially in agreement with the reference, but a complete review of all prevailing variants is recommended prior to use. [More info](#)

OTI Annotation: This clone was engineered to express the complete ORF with an expression tag. Expression varies depending on the nature of the gene.

Components: The ORF clone is ion-exchange column purified and shipped in a 2D barcoded Matrix tube containing 10ug of transfection-ready, dried plasmid DNA (reconstitute with 100 ul of water).

Reconstitution Method:

1. Centrifuge at 5,000xg for 5min.
2. Carefully open the tube and add 100ul of sterile water to dissolve the DNA.
3. Close the tube and incubate for 10 minutes at room temperature.
4. Briefly vortex the tube and then do a quick spin (less than 5000xg) to concentrate the liquid at the bottom.
5. Store the suspended plasmid at -20°C. The DNA is stable for at least one year from date of shipping when stored at -20°C.

RefSeq: [NM_001001852.2](#), [NP_001001852.1](#)

RefSeq Size: 2392 bp

RefSeq ORF: 981 bp

Locus ID: 415116

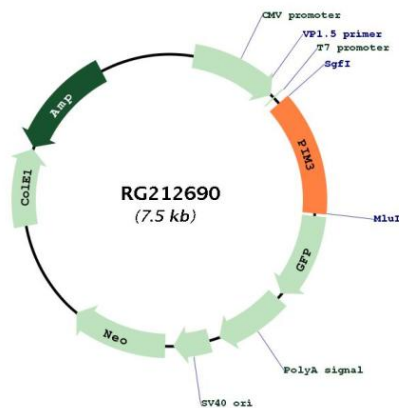
UniProt ID: [Q86V86](#)

Cytogenetics: 22q13.33

Protein Families: Druggable Genome, Protein Kinase

Gene Summary: The protein encoded by this gene belongs to the Ser/Thr protein kinase family, and PIM subfamily. This gene is overexpressed in hematological and epithelial tumors and is associated with MYC coexpression. It plays a role in the regulation of signal transduction cascades, contributing to both cell proliferation and survival, and provides a selective advantage in tumorigenesis. [provided by RefSeq, Jun 2012]

Product images:



Circular map for RG212690