

Product datasheet for **RG212679**

RAP1GDS1 (NM_001100426) Human Tagged ORF Clone

Product data:

Product Type:	Expression Plasmids
Product Name:	RAP1GDS1 (NM_001100426) Human Tagged ORF Clone
Tag:	TurboGFP
Symbol:	RAP1GDS1
Synonyms:	GDS1; SmgGDS
Mammalian Cell Selection:	Neomycin
Vector:	pCMV6-AC-GFP (PS100010)
E. coli Selection:	Ampicillin (100 ug/mL)



[View online »](#)

ORF Nucleotide Sequence:

>RG212679 representing NM_001100426
 Red=Cloning site Blue=ORF Green=Tags(s)

TTTTGTAATACGACTCACTATAGGGCGGCCGGAATTCGTCGACTGGATCCGGTACCGAGGAGATCTGCC
 GCC**CGCATCGCC**

ATGGCAGATAATCTCAGTGATACCTTGAAGAAGCTGAAGATAACAGCTGTTGACAAGACTGAGGATAGTT
 TAGAAGGATGCTTGGATTGTCTGCTTCAAGCCCTGGCTCAAAAATAATACGGAAACAAGTGAAAAATCCA
 AGCAAGTGAATACTTACAGCTGTTTGAAGTCTGTTGACTCCACAGTCTTCTGCAAAGCCAAAGTAGCT
 AACATCATAGCAGAAGTAGCCAAAAATGAGTTTATGCGAATTCATGTGTGGATGCTGGATTGATTTAC
 CACTGGTGCAGCTGCTAAATAGCAAAGACCAGGAAGTGTCTTCAAACGGGCAGGGCTCTAGGAAACAT
 ATGTTACGATAGCCATGAGGGCAGAAGTGCAGTTGACCAAGCAGGTGGTGCACAGATTGTAATTGACCAT
 TTAAGGTCAGTGTGCAGTATAACAGATCCCGCAATGAGAAGCTTTGACTGTCTTTGTGGCATGCTGA
 TGAAGTATAGCAATGAGAATGATTGCTTCAAGCTCAGCTTATCAATATGGGTGTTATTCCTACCTTAGT
 GAAATTACTGGGCATCCACTGCCAAAATGCAGCTTTACAGAAAATGTGTCTTGTTCATTGGTAATTTA
 GCAGAAGTGTGAGTCAAGTAAAGAACAGTTTGCCAGTACAAACATTGCTGAAGAGCTAGTAAAACCTTCA
 AGAAAACAATAGAACATGATAAGAGAGAAAATGATTTTTGAAGTCTTGTCTCCATTGGCAGAAAATGATGC
 TATTAACACAGCTGGTTGAAGCAGGCCTAGTAGAGTGTCTACTAGAGATTGTTTCAGCAAAAAGTGGAT
 AGTGACAAAAGAAGATGATTAAGTGCAGCTCAAACTGGTTCAGATCTCATGGTTTTATTACTTCTTGGAG
 ATGAATCCATGCAGAAGTATTTGAAGGAGGAAAAGGTAGTGTATTTCAAAGGACTCTCTTGGATCCC
 ATCAAATAACCACAGCTACAGCTTGTGGAGCATTGGCAATTGCAAATTTGCCAGAAAATGATGCAAAAT
 TGTATTCATATGGTAGACAATGGGATTGTAGAAAACTTATGGATTTACTGGACAGACATGATAAGAGATG
 GAAATGTAACAGTACAGCATGCAGCACTAAGTGCCTCAGAAAACCTGGCCATTCCAGTTATAAAAAGC
 AAAGATGTTATCAGCTGGGGTACAGAGGCAGTTTTGAAATTTCTTAAATCTGAAATGCCTCCTGTTCAG
 TTCAAACCTTGTGGAAACATTAAGAATGTTAATAGATGCACAAGCAGAAGCTGCTGAACAATTTGGGAAAGA
 ATGTTAAGTTAGTGGAGCGTTTGGTGAATGGTGTGAAGCCAAAGATCATGCTGGTGTGATGGGGGAGTC
 AAACAGACTGCTGTCTGCCCTTATACGACACAGTAAATCAAAGATGTAATTAACCATTTGTGCAGAGT
 GGTGGCATCAAGCATCTAGTTACCATGGCAACTAGTGAACATGTAATAATGCAGAATGAAGCTCTTGTG
 CTTTGGCATTAAAGCAGCTTTAGAATTTGGGACTGCTGAGAAAAGATCTAGAAAAGTCTAAACTGTACA
 GATTTTACATAGACTGCTAGCAGATGAGAGAAGTGTCTGAAATCAAATATAATCCATGGTCTGATA
 TGTGCTCTTATGGGATCTGAATGTCTACACAAGGAAGTACAGGATTTGGCTTTTCTAGATGTCGATCCA
 AACTTCGACAGTCATGAGAACAAAAGTGTGCCAGCAGGCTCTCTCACAGAGCAGAGACTTACTGTGGA
 AAGC

ACGCGTACGCGGCCGCTCGAG - GFP Tag - GTTTAA

Protein Sequence:

>RG212679 representing NM_001100426
 Red=Cloning site Green=Tags(s)

MADNLSDTLKKLKITAVDKTEDSLEGCLDCLLQALAQNNTETSEKIQASGILQLFASLLTPQSSCKAKVA
 NIIAEVAKNEFMRIPCVDAGLISPLVQLLNSKDQEVLLQTGRALGNICYDSHEGRSAVDQAGGAQIVIDH
 LRSLCSITDPANEKLLTVFCGMLMNYSNENDSLQAQLINMGVIPTLVKLLGIHCQNAALTEMCLVAFGNL
 AELESSKEQFASTNIAEELVKLKKQIEHDKREMI FEVLAPLAENDA IKLQLVEAGLVECLLEIVQQKVD
 SDKEDDITELKTGSDLMVLLLLGDESMQKLFEGGKGSVQRVLSWIPSNHQLQLAGALAIANFARNDAN
 CIHMVDNGIVEKLMDLLDRHVEDGNVTVQHAALSALRNLAIPVINKAKMLSAGVTEAVLKFLKSEMPVQ
 FKLLGTLRMLIDAQAEAAEQLGKNVKLVERLVEWCEAKDHAGVMGESNRLLSALIRHRSKDVIKTIVQS
 GGTKHLVTMATSEHVIMQNEALVALALIAALELGTAEKDLSEAKLVQILHRLADERSAPEIKYNSMVLIC
 CALMGSECLHKEVQDLAFLDVVSKLRSHENKSVAAQASL TEQRLTVES

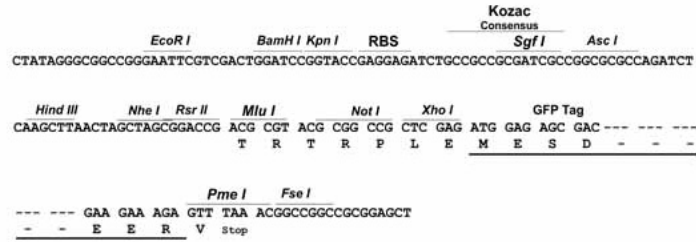
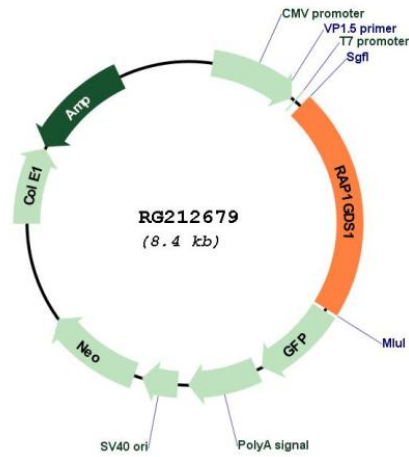
TRTRPLE - GFP Tag - V

Restriction Sites:

SgfI-MluI

Cloning Scheme:

Cloning sites used for ORF Shutting:


Plasmid Map:


ACCN: NM_001100426
 ORF Size: 1824 bp

OTI Disclaimer:	The molecular sequence of this clone aligns with the gene accession number as a point of reference only. However, individual transcript sequences of the same gene can differ through naturally occurring variations (e.g. polymorphisms), each with its own valid existence. This clone is substantially in agreement with the reference, but a complete review of all prevailing variants is recommended prior to use. More info
OTI Annotation:	This clone was engineered to express the complete ORF with an expression tag. Expression varies depending on the nature of the gene.
Components:	The ORF clone is ion-exchange column purified and shipped in a 2D barcoded Matrix tube containing 10ug of transfection-ready, dried plasmid DNA (reconstitute with 100 ul of water).
Reconstitution Method:	<ol style="list-style-type: none"> 1. Centrifuge at 5,000xg for 5min. 2. Carefully open the tube and add 100ul of sterile water to dissolve the DNA. 3. Close the tube and incubate for 10 minutes at room temperature. 4. Briefly vortex the tube and then do a quick spin (less than 5000xg) to concentrate the liquid at the bottom. 5. Store the suspended plasmid at -20°C. The DNA is stable for at least one year from date of shipping when stored at -20°C.
RefSeq:	NM_001100426.2
RefSeq Size:	3770 bp
RefSeq ORF:	1827 bp
Locus ID:	5910
UniProt ID:	P52306
Cytogenetics:	4q23
Gene Summary:	The smg GDP dissociation stimulator (smgGDS) protein is a stimulatory GDP/GTP exchange protein with GTPase activity (Riess et al., 1993 [PubMed 8262526]).[supplied by OMIM, Feb 2010]