

## Product datasheet for **RG212667**

### SCARF2 (NM\_182895) Human Tagged ORF Clone

#### Product data:

Product Type:	Expression Plasmids
Product Name:	SCARF2 (NM_182895) Human Tagged ORF Clone
Tag:	TurboGFP
Symbol:	SCARF2
Synonyms:	NSR1; SREC-II; SREC2; SRECRP-1; VDEGS
Mammalian Cell Selection:	Neomycin
Vector:	pCMV6-AC-GFP (PS100010)
E. coli Selection:	Ampicillin (100 ug/mL)



[View online »](#)



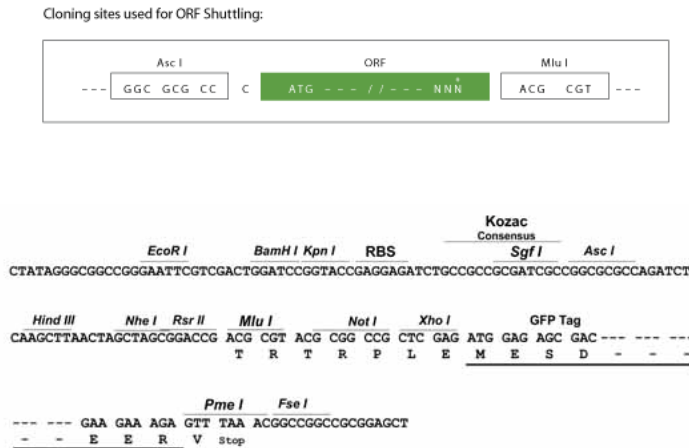
**Protein Sequence:** >RG212667 representing NM\_182895  
 Red=Cloning site Green=Tags(s)

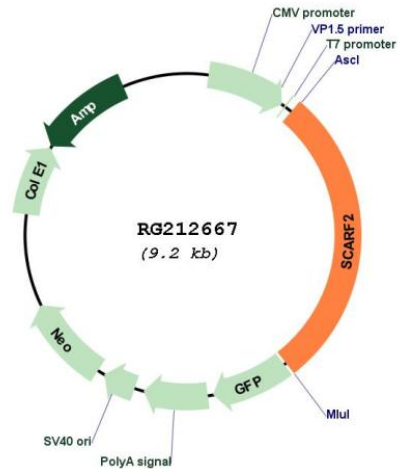
MEGAGPRGAGPARRRGAGGPPSPLLPSLLLLLLLWMLPDTVAPQELNPRGRNVCRAPGSQVPTCCAGWRQ  
 QGDECGIAVCEGNSTCSENEVCVRPGECRCRHGYFGANCDTKCPRQFWGPDCKELCSCHPHGQCEDVTGQ  
 CTCHARRWGARCEHACQCQHGTCCHPRSGACRCEPGWWGAQCASACYCSATSRCDPQTGA CLCHAGWWGRS  
 CNNQCACNSSPCEQQSGRCQCRERTFGARCDRYCQCFRGRCHPVDGTCACEPGYRGKYCREPCAGFYGL  
 GCRRRCGQCKGQPCTVAEGRCLTCEPGWNGTKCDQPCATGFYGEGCSHRCPPCRDRGHACNHVTGKCTRC  
 NAGWIGDRCEKCSNGTYGEDCAFVCADCGSGHCDFQSGRCLCSPGVHGHPCNVTCPPGLHGADCAQACS  
 CHEDTCDPVTGACHLETNQRKGVMGAGALLVLLVCLLLSLLGCCACRGGKDPTRRELSLGRKKAPHRLCG  
 RFSRISMKLPRIPLRQKLPKVVAHDLNLTNCSFLEPPSGLEQPPSPSSRASFSFDDTTDEGPVYC  
 VPHEEAPAESRDPEVPTVPAEAPAPSPVPLTTPASAEAIPLPASSDERSASSVEGGALYARVARRE  
 ARPARGEIGGLSLSPSPERRKPPPPDPATPKVSWIHGKHSAAAAGRAPSPPPPGSEAAPSPSKRRT  
 PSDKSAHTVEHGSPTTRDPTPRPPGLEEATALAAPSPPRARARAAPRPLGAHGRRRSPAKRAEAASMLA  
 ADVRGKTRSLGRAEVALGAQGPREKPAPPQAKRSVPPASPARAPPATETPGPEKAATDLPAPETPRKKT  
 PIQKPPRKKSSREAAGELGRAGAPTL

TRTRPLE - GFP Tag - V

**Restriction Sites:** AscI-MluI

**Cloning Scheme:**



**Plasmid Map:**


**ACCN:** NM\_182895

**ORF Size:** 2595 bp

**OTI Disclaimer:** The molecular sequence of this clone aligns with the gene accession number as a point of reference only. However, individual transcript sequences of the same gene can differ through naturally occurring variations (e.g. polymorphisms), each with its own valid existence. This clone is substantially in agreement with the reference, but a complete review of all prevailing variants is recommended prior to use. [More info](#)

**OTI Annotation:** This clone was engineered to express the complete ORF with an expression tag. Expression varies depending on the nature of the gene.

**Components:** The ORF clone is ion-exchange column purified and shipped in a 2D barcoded Matrix tube containing 10ug of transfection-ready, dried plasmid DNA (reconstitute with 100 ul of water).

**Reconstitution Method:**

1. Centrifuge at 5,000xg for 5min.
2. Carefully open the tube and add 100ul of sterile water to dissolve the DNA.
3. Close the tube and incubate for 10 minutes at room temperature.
4. Briefly vortex the tube and then do a quick spin (less than 5000xg) to concentrate the liquid at the bottom.
5. Store the suspended plasmid at -20°C. The DNA is stable for at least one year from date of shipping when stored at -20°C.

**RefSeq:** [NM\\_182895.2](#), [NP\\_878315.1](#)

**RefSeq Size:** 3508 bp

**RefSeq ORF:** 2601 bp

**Locus ID:** 91179

**UniProt ID:** [Q96GP6](#)

**Cytogenetics:** 22q11.21

**Protein Families:** Druggable Genome

**Gene Summary:** The protein encoded by this gene is similar to SCARF1/SREC-I, a scavenger receptor protein that mediates the binding and degradation of acetylated low density lipoprotein (Ac-LDL). This protein has only little activity of internalizing modified low density lipoproteins (LDL), but it can interact with SCARF1 through its extracellular domain. The association of this protein with SCARF1 is suppressed by the presence of scavenger ligands. Alternatively spliced transcript variants encoding distinct isoforms have been reported. [provided by RefSeq, Jul 2008]