

Product datasheet for **RG212635**

ZC3H13 (NM_015070) Human Tagged ORF Clone

Product data:

Product Type:	Expression Plasmids
Product Name:	ZC3H13 (NM_015070) Human Tagged ORF Clone
Tag:	TurboGFP
Symbol:	ZC3H13
Synonyms:	KIAA0853; Xio
Mammalian Cell Selection:	Neomycin
Vector:	pCMV6-AC-GFP (PS100010)
E. coli Selection:	Ampicillin (100 ug/mL)
ORF Nucleotide Sequence:	>RG212635 representing NM_015070 Red=Cloning site Blue=ORF Green=Tags(s)

TTTTGTAATACGACTCACTATAGGGCGGCCGGAATTCGTCGACTGGATCCGGTACCGAGGAGATCTGCCGCC**CGATCGCC**

ATGTCAAAAATTAGAAGGAAGGTCACAGTGAAAAATACCAAGACTATATCTGATAGCACATCCCGAAGAC
CCAGTGTATTTGAGAGGCTTGGACCCAGCACTGGCAGTACAGCAGAGACACAGTGCCGTAACCTGGCTGAA
GACTGGCAACTGCCTCTATGGAAACACATGTAGATTTCGTACATGGCCCTCACCTCGTGGTAAAGGTTAT
AGCAGCAATTATAGAAGGTCACCAGAAAGACCTACAGGGGATCTTAGAGAAAGAATGAAGAAACAAGCGCC
AAGACGTGGCACTGAGCCCAGAAACGAAATACAGAGGAGTCACTCCTCACCTGTTAGGAAAGAATCTTC
AAGAGGGAGACATAGGGAAAAGGAGACATAAAAATCACTAAGGAAAGAAGTCCAGAAAGTGAAGAAGAA
AATGTAGAATGGGAACTAATAGAGATGATTCTGACAATGGAGATATTAATTATGATTATGTTTCATGAAT
TGTCAATGGAAATGAAGCGTCAGAAGATACAGAGGGAATTAATGAAGCTGGAACAAGAAAACATGGAGAA
GAGAGAAGAAATCATTAAAAAGGAGGTTTCCACAGAAGTGGTTAGATCAAAATGTCCCGTCCACT
TCTTAAGAAAGTCTAGCAAACTCCGAAGCGAAAATCAAGCCGAAAGTCGTCTTCAGCTAGCAAGAAAG
ATAGGAAGACATCTGCAGTATCTTCTCCCTGTGGACCAGCAGAGAAATCAAAAACCAACCAAGTAA
AAAGAAAAGGACCACGTAATCTAGTCCACCCCTCCTATACCAGAAGATATCGCTCTGGGAAAAAATAC
AAAGAAAATATAAGTAAAAGACAGGATAGAAGAAAAACAAGAGATGGAAAGGACAGAGGACGAGATT
TTGAACGACAAAAGAGAAAAGAGAGACAAGCCAAGGTCCTACTTCCCGAGCAGGACAGCATCATTCTCCTAT
ATCTTCTAGACATCACTCATCTTCTCACAATCAGGATCATCTATTCAAAGACATTCTCCTTCTCCTCGT
CGAAAAAGAAGTCTTCCACATCTTATCAGCGGACACTAACTCCACCTTACGACGCTCTGCCTCTCCTT
ATCCTTACATTTTGTGCTCTCCCGAGAGAAAGCAGAGTCTCCAAGACATCGCTCTCCAATGCGAGA
GAAAGGGAGACATGATCATGAACGAACTTACAGTCTCATGATCGACGCCACGAAAGGAGGGAAGATACT
AGGGGCAAACGAGACAGAGAAAAGGACTCAAGAGAAGAACGAGAATATGAACAGGATCAGAGCTTCTTA
GAGACCACAGAGATGACAGAGAACTCGAGATGGTCGGGATCGGAGAGATGCCAGAGATACTAGGGACCG
AAGGGAATAAGAGACTCCAGAGACATGCGGGACTCAAGGGAGATGAGAGATTATAGCAGAGATACCAA



GAGAGCCGTGATCCCAGAGATTCTCGGTCCACTCGTGATGCCCATGACTACAGGGACCGTGAAGGTCGAG
ATACTCATCGAAAGGAGGATACATATCCAGAAGAATCCCGGAGTTATGGCCGAAACCATTGAGAGAAGA
AAGTTCTCGTACGGAAAT AAGGAATGAGTCCAGAAATGAGTCTCGAAGTAAAATTAGAAATGACCGAATG
GGCCGAAGTAGGGGGAGGGTTCTTGAGTTACCTGAAAAGGGAAGTCGAGGCTCAAGAGGTTCTCAAATTG
ATAGTCACAGTAGTAATAGCAACTATCATGACAGCTGGGAACTCGAAGTAGCTATCCTGAAAGAGATAG
ATATCCTGAAAGAGACAACAGAGATCAAGCAAGGGATTCTTCTTTGAGAGAAGACATGGAGAGCGAGAC
CGTCGTGACAACAGAGAGAGATCAAAGACCAAGCTACCAATTTCGACATCAGGGAAGGAATGACGAGC
TTGAGCGTGATGAAAGAAGAGAGGAACGAAGAGTAGACAGAGTGGATGATAGGAGAGATGAAAGGGCTAG
AGAGAGAGATCGGGAACGAGAACGAGACAGGGAGCGGGAGAGAGAGAGGGAACTGAAACGGGATCGGAA
AGAGAAAAAGAGAGAGAACTAGAAAAGAGAGCGTCTAGGGAACGGGAGAGAGAAAAGAGAAAAAGAGAG
ATCGTGAAAGGGATAGAGACCGAGACCAGATCGAGAGCGGAAAGAGAGAGGGAAACGAGACAGGAAAA
AGAACGGGAACGAGAAAGAGAAGAGAGAGAGAGGGAGAGAGCGGAAACGGGAGAGAGAGCGAGAGCGA
GAACGGGAACGAGAAAGAGCGAGAGAAAGGGATAAAGAACGAGAACGCCAAAGGGATTGGGAAGACAAG
ACAAAGGACGAGATGACCGCAGAGAAAAGCGAGAAAGAGATCCGAGAAGATAGGAATCCAAGAGATGGACA
TGATGAAAGAAAATCAAAGAAGCGCTATAGAAATGAAGGGAGTCCAGCCCTAGACAGTCCCGAAGCGC
CGGCGTGAACATTCTCCGACAGTGATGCCTACAACAGTGGAGATGATAAAAATGAAAAACAGACTCT
TGAGCCAAGTTGTACGACCTCAAGAATCTCGTTCTCTTAGTCCCTCGCACCTCACAGAAGACAGACAGGG
TAGATGAAAAGAGGAGGATCGTAAACCAGAAAAGGAAAGAGAGTTCAAGGCGCTACGAAGAACAGGAACTC
AAGGAGAAAGTTTCTTCTGTAGATAAACAGAGAGAACAGACAGAAATCCTGGAAAGCTCAAGAATGCGTG
CACAGGACATTATAGGACACCACAGTCTGAAGATCGAGAGACATCTGATCGAGCTCATGATGAAAAACA
GAAGAAAGCAAAAATCAAAGAAACCAATT AAGAAAAAGAAAGAGGATGATGTTGGAATAGAGAGGGGT
AACATAGAGACAACATCTGAAGATGGTCAAGTATTTTACCAAAAAAGGACAGAAAAAGAAAAGCATTG
AAAAAAACGTAAAAAATCCAAAGGTGATTCTGATATTTCTGATGAAGAAGCAGCCCAAGTAAGAA
GAAAAGAGGCCACGGACTCCCCCTATAACAACCTAAAGAGGAATTGGTTGAAATGTGCAATGGTAAGAA
GGTATTCTAGAGGACTCCAGAAAAAGAGATACAGCATTCAAGTACTGGTCTGATGAGGATGTCCTG
ACCGTACAGAGGTGACAGAAGCAGAGCATACTGCCACCGCCACGACTCCTGGTAGTACCCCTTCTCTCT
ATCTTCTCTTCTCTCTCCACCGCTGTGGCTACTGCCACTGCTACAACCTGTGCTGCAACTCTTGCT
GCCACTACTGCTGCTGCCCCACCTCTTTCAGCACATCTGCCATCACTATTTCCACCTCTGCCACCCCA
CCAATACCACCAATAATACTTTTGCCAATGAAGACTCACACAGAAAATGCCACAGAACACGAGTAGAAAA
AGTAGAGACGCCCTACGTGACTATAGAAGATGCACAGCATCGCAAGCCTATGGATCAAAAGAGGAGCAGC
AGCCTCGGAGCAATCGGAGTAACCGTAGTCATACGTCTGGTCTGCTTCCGCTCCCATCCAATGATTCAG
CCCATCGAAGTGGAGATGACCAAAGTGGTGGAAAGAGAGTACTGCACAGTGGCTCAAGAGATAGAGAAAA
AACAAAAAGCCTGGAATCACAGGAGAGAGAAAATCTAGGATTGATCAGTTAAAGCGTGGAGAACCAGT
CGAAGTACTTCTCAGATCGCCAGGATTCAAGAAGCCATAGTTCAAGAAGAAGTTCTCCAGAGTCAGATC
GACAGGTCATTCAAGATCTGGGTCATTGATAGCAGAGACAGGCTTCAAGAACGAGATCGATATGAACA
CGACAGAGAGCGGAGAGAGAGAGAGGAGAGATACGAGGCAGAGAGAATGGGACCGAGATGCTGATAAAGAT
TGGCCACGCAACAGGGATCGAGATAGATTGCGGAAACGAGAACGAGAGAGAGAACGAGACAAAAGGAGAG
ACTTGGATAGGAAAAGAGAGAGACTAATTTCTGATTCTGTTGAAAGGGACAGGGACAGAGACAGAGACAG
AACTTTTGAGAGTTCTCAAATAGAGTCTGTGAAACGCTGTGAAGCAAACTGGAAGGTGAACATGAAAGG
GATCTAGAAAGCACTTCCGAGACTCTCTAGCCTTGATAAAGAGAGAATGGATAAAGATCTGGGATCTG
TGCAGGGATTTGAAGATACAAATAAATCCGAGAGAACTGAGAGTCTGGAAGCAGGAGATGACGAGTCCAA
GTTAGATGATGCACATTCATTAGGCTCTGGTGCTGGAGAAGGATACGAGCCAATCAGTGATGACGAACTA
GATGAAATTTGCGAGGTGATGCAGAAAAGAGGGAGGACCAACAGGATGAGGAGAAGATGCCAGATCCCT
TAGATGTGATAGATGTGGATTGGTCTGCTTATGCCAAAGCATCCAAAAGAACACGAGAGCCTGGGGC
TGCACCTTAAAATTCACACCTGGAGCTGTTATGCTAAGAGTTGGGATTTCTAAAAGTTGCGAGTTCT
GAACTCTTTGCCAAAGTCAAAGAAACATGTCAGAGACTTTTAGAAAAACCAAAGGTAGTTTCATTTTAC
TT

ACGCGTACGCGGCCGCTCGAG - GFP Tag - GTTTAA

Protein Sequence: >RG212635 representing NM_015070
 Red=Cloning site Green=Tags(s)

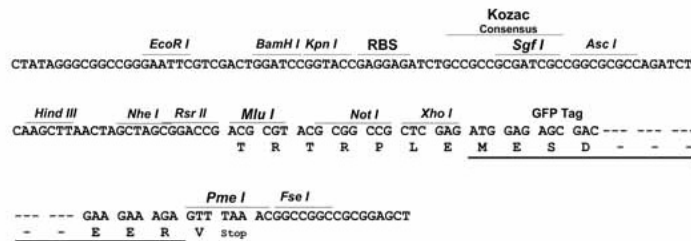
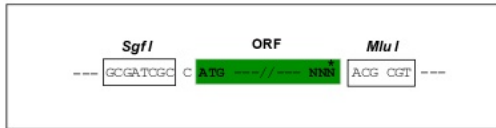
MSKIRRKVTVENTKTISDSTSRRPSVFERLGPSTGTAETQCRNWLKTGNCLYGNTCRFVHGSPRKGKY
 SSNYRRSPERPTGDLRERMKNKRQDVTPEQKRNTEESSSPVRKESSRGRHREKEDIKITKERTPESEEE
 NVEWETNRDSDNGDINYDYVHEL SLEMKRQKIQRELMKLEQENMEKREEII IKKEVSPVVRSKLSPPS
 SLRKKSSKSPKRKSSPKSSASKKDRKTSAVSSPLLDQQRNSKTNQSKKKGPRTSPPPPPIPIEDIALGKKY
 KEKYKVKDRIEEKTRDGKDRGRDFERQREKRDKPRSTSPAGQHHSPISSRHSSSSSQSGSSIQRHSPSPR
 RKRTSPSPSYQRTLTPPLRRSASPYPHSLSSPQRKQSPRHRSPMREKGRHDHERTSQSHDRRHERRDT
 RGKRDREKDSREEREYEQDQSSSRDHRDDREPRDGRDRRDARDTRDRRELRSRDMRDSREMRDYSRDTK
 ESRDPRDSRSTRDAHDYRDREGRDTHRKEDTYPEESRSYGRNHLREESSRTEIRNESRNRSEIRNDRM
 GRSRGRVPELPEKGSRGRSQIDSHSSNSNYHDSWETRSSYPERDRYPERDNRDQARDSSFERRHGERD
 RRDNRERDQRPSSPIRHQGRNDELERDERREERVDRVDDRRDERARERDRERERERERERERERERE
 REKERELEREREREREREKERDRERDRDRDHREEREREREREREKERERERERERERERERERERE
 ERERERARERDKERERQRDWEKDKGRDDRREKREEIREDRNPRDGHDERKSKKRYRNEGSPSPRQSPKR
 RREHSPDSDAYNSGDDKNEKHRLLSQVVRPQESRSLSPSHLTEDRQGRWKEEDRKPERRKESRRYEEQEL
 KEKVSSVDKQREQTEILESSRMRAQDIIGHHQSSEDRETSRAHDENKKKAKIQKKPIKKKKEDDVGIERG
 NIETTSQKEDTAFSDWSEDEDVDRTEVTEAHTATATTPGSTPSPLSSLLPPPPVATATATTVPATLA
 ATAAAAATSFSTSAITISTATPTNTTNTTFANEDSHRKHCHRTRVEKVETPHVTIEDAQHRKPMQKRSS
 SLGNSRNRSHTSGRLRSPSNDSAHRSGDDQSGRKRVLHSGSRDREKTKSLEITGERKSRIDQLKRGEP
 RSTSSDRQDSRSHSSRRSSPESDRQVHSRSGFDSRDRLQERDRYEHDRERERERRDTRQREWDRDADK
 WPRNRDRDLRERERERERDKRRDLRERERLISDSVERDRDRDRDRTEFESSQIESVKRCEAKLEGEHER
 DLESTSRDSLALDKERMMDKDLGSGVGFEDTNKSERTELEAGDDESKLDDAHSLSGSGAGEGYEPISSDEL
 DEILAGDAEKREDQDDEEKMPDPLDIVDWDWGLMPKHPKEPREPGAALLKFTPGAVMLRVGISKKLAGS
 ELFAKVKETCQRLLEKPKGSFILL

TRTRPLE - GFP Tag - V

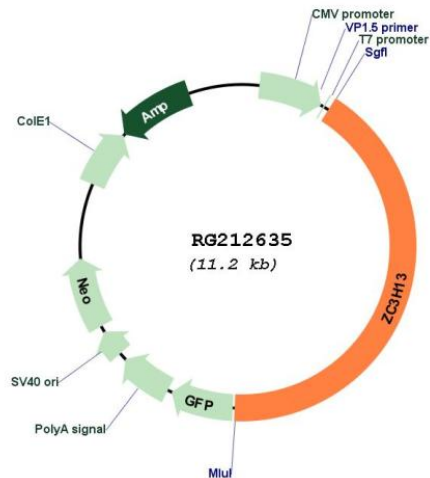
Restriction Sites: SgfI-MluI

Cloning Scheme:

Cloning sites used for ORF Shutting:



Plasmid Map:



ACCN: NM_015070

ORF Size: 4692 bp

OTI Disclaimer: The molecular sequence of this clone aligns with the gene accession number as a point of reference only. However, individual transcript sequences of the same gene can differ through naturally occurring variations (e.g. polymorphisms), each with its own valid existence. This clone is substantially in agreement with the reference, but a complete review of all prevailing variants is recommended prior to use. [More info](#)

OTI Annotation: This clone was engineered to express the complete ORF with an expression tag. Expression varies depending on the nature of the gene.

Components: The ORF clone is ion-exchange column purified and shipped in a 2D barcoded Matrix tube containing 10ug of transfection-ready, dried plasmid DNA (reconstitute with 100 ul of water).

Reconstitution Method:

1. Centrifuge at 5,000xg for 5min.
2. Carefully open the tube and add 100ul of sterile water to dissolve the DNA.
3. Close the tube and incubate for 10 minutes at room temperature.
4. Briefly vortex the tube and then do a quick spin (less than 5000xg) to concentrate the liquid at the bottom.
5. Store the suspended plasmid at -20°C. The DNA is stable for at least one year from date of shipping when stored at -20°C.

RefSeq: [NM_015070.2](#), [NP_055885.2](#)

RefSeq Size: 6409 bp

RefSeq ORF: 4695 bp

Locus ID: 23091

UniProt ID: [Q5T200](#)

Cytogenetics: 13q14.13

Gene Summary: Associated component of the WMM complex, a complex that mediates N6-methyladenosine (m6A) methylation of RNAs, a modification that plays a role in the efficiency of mRNA splicing and RNA processing (PubMed:29507755). Acts as a key regulator of m6A methylation by promoting m6A methylation of mRNAs at the 3' UTR (By similarity). Controls embryonic stem cells (ESCs) pluripotency via its role in m6A methylation (By similarity). In the WMM complex, anchors component of the MACOM subcomplex in the nucleus (By similarity). Also required for bridging WTAP to the RNA-binding component RBM15 (RBM15 or RBM15B) (By similarity). [UniProtKB/Swiss-Prot Function]