

Product datasheet for **RG212632**

DNAJC10 (NM_018981) Human Tagged ORF Clone

Product data:

Product Type:	Expression Plasmids
Product Name:	DNAJC10 (NM_018981) Human Tagged ORF Clone
Tag:	TurboGFP
Symbol:	DNAJC10
Synonyms:	ERdj5; JPDI; MTHr; PDIA19
Mammalian Cell Selection:	Neomycin
Vector:	pCMV6-AC-GFP (PS100010)
E. coli Selection:	Ampicillin (100 ug/mL)



[View online »](#)

ORF Nucleotide Sequence:

>RG212632 representing NM_018981
 Red=Cloning site Blue=ORF Green=Tags(s)

TTTTGTAATACGACTCACTATAGGGCGGCCGGGAATTCGTCGACTGGATCCGGTACCGAGGAGATCTGCC
 GCC**CGGATCGCC**

ATGGGAGTCTGGTTAAATAAAGATGACTATATCAGAGACTTGAAAAGGATCATTCTCTGTTTCTGATAG
 TGTATATGGCCATTTTAGTGGGCACAGATCAGGATTTTTACAGTTTACTTGGAGTGTCCAAAACCTGCAAG
 CAGTAGAGAAATAAGACAAGCTTTCAAGAAATTGGCATTGAAGTTACATCCTGATAAAAAACCGAATAAC
 CCAATGCACATGGCGATTTTTTAAAAATAAATAGAGCATATGAAGTACTCAAAGATGAAGATCTACGGA
 AAAAGTATGACAAATATGGAGAAAAGGACTTGAGGATAATCAAGGTGGCCAGTATGAAAGCTGGAACATA
 TTATCGTTATGATTTTGGTATTTATGATGATGATCCTGAAATCATAACATTGGAAAAGAAGAGATTTGAT
 GCTGCTGTTAATCTGGAGAAGTGGTGTGTAATTTTTACTCCCCAGGCTGTTACACTGCCATGATT
 TAGCTCCACATGGAGAGACTTTGCTAAGAAGTGGATGGTTACTTCAATTGGAGCTGTTAACTGTGG
 TGATGATAGAATGCTTTGCCGAATGAAAGGAGTCAACAGCTATCCAGCCTCTTCATTTTTCGGTCTGGA
 ATGGCCCCAGTAAATATCATGGAGACAGATCAAAGGAGAGTTTGTGAGTGTTCGAATGCAGCATGTTA
 GAAGTACAGTGACAGAAGCTTTGGACAGGAAATTTGTCAACTCCATACAACTGCTTTTGTCTGCTGGTAT
 TGGCTGGCTGATCACTTTTTGTTCAAAGGAGGAGATTGTTTGACTTCACAGACACGACTCAGGCTTAGT
 GGCATGTTGGATGGTCTTGTAAATGTAGGATGGATGGACTGTGCCACCCAGGATAACCTTTGTAAGAGCT
 TAGATATTACAACAAGTACTACTGCTTATTTTCTCTGGAGCCACTTTAAATAACAAAGAGAAAAACAG
 TATTTTGTCTCAACTCATTGGATGCTAAAGAAATATATTTGGAAGTAATACATAATCTCCAGATTTT
 GAACTACTTTCCGCAACACACTAGAGGATCGTTTGGCTCATCATCGGTGGCTGTTATTTTTTCATTTTG
 GAAAAATGAAAAATCAAATGATCCTGAGCTGAAAAAACTAAAACTACTTAAAAATGATCATATTCA
 AGTTGGCAGGTTTACTGTTTCTCTGCACCAGACATCTGTAGTAATCTGTATGTTTTTCAGCCGCTCTTA
 GCAGTATTTAAAGGACAAGGAACCAAGAATATGAAATTCATCATGAAAAGAAGATTCTATATGATATAC
 TTGCCTTTGCCAAAGAAAGTGTGAATTTCTCATGTTACCACGCTTGGACCTCAAAATTTTCTGCCAATGA
 CAAAGAACCATGGCTTGTGATTTCTTTGCCCCCTGGTGTCCACCATGTCGAGCTTTACTACCAGAGTTA
 CGAAGAGCATCAAATCTTCTTTATGGTCAGCTTAAAGTTTGGTACACTAGATTGTACAGTTTACGAGGAC
 TCTGTAACATGTATAACATTCAGGCTTATCCAACAACAGTGGTATTCAACCAGTCCAACATTCATGAGTA
 TGAAGGACATCACTCTGCTGAACAAATCTGGAGTTCATAGAGGATCTTATGAATCCTTCAGTGGTCTCC
 CTTACACCCACCCTTCAACGAACTAGTTACACAAAGAAAACACAACGAAAGTCTGGATGGTTGATTTCT
 ATTCTCCGTGGTGTATCCTTGCCAAGTCTAATGCCAGAATGGAAAAGAATGGCCCGGACATTAAGTGG
 ACTGATCAACGTGGGCAGTATAGATTGCCAACAGTATCATTCTTTTTGTGCCAGGAAAACGTTCAAAGA
 TACCCTGAGATAAGATTTTTTCCCCAAAATCAAATAAAGCTTATCATTATCACAGTTACAATGGTTGGA
 ATAGGGATGCTTATCCCTGAGAATCTGGGGTCTAGGATTTTTACCTCAAGTATCCACAGATCTAACACC
 TCAGACTTTCAGTGAAAAAGTCTACAAGGAAAAATCATTGGGTGATTGATTTCTATGCTCCTTGGTGT
 GGACCTTGCCAGAATTTGCTCCAGAATTTGAGCTCTGGCTAGGATGATTAAGGAAAAGTGAAGCTG
 GAAAAGTAGACTGTCAGGCTTATGCTCAGACATGCCAGAAAGCTGGGATCAGGGCCTATCCAAGTGTAA
 ATTTTATTTCTACGAAAGAGCAAAGAGAAATTTCAAGAAGAGCAGATAAATACCAGAGATGCAAAAGCA
 ATCGCTGCCTAATAAGTAAAAATGGAACTCTCCGAAATCAAGGCAAGAGGAATAAGGATGAAGT

ACGCGTACGCGGCCGCTCGAG - GFP Tag - GTTTAA

Protein Sequence: >RG212632 representing NM_018981
 Red=Cloning site Green=Tags(s)

```

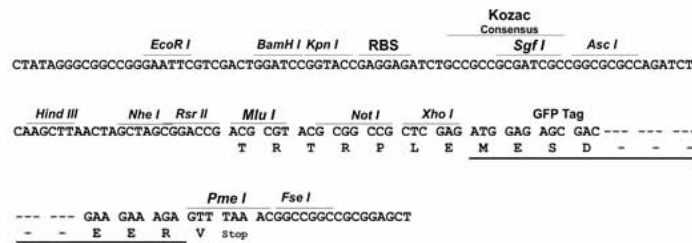
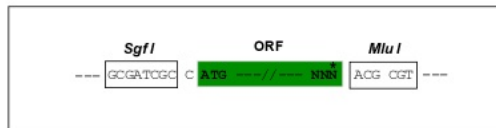
MGVWLNKDDYIRDLKRIILCFLIVYMAILVGTDQDFYSLLGVSKTASSREIRQAFKLLALKLHPDKNPNN
PNAHGDFLKNRAYEVLKDEDLRKKYDKYGEKLEDNQGQYESWNYRYDFGIYDDPEIITLERREFD
AAVNSGELWFVNFYSPGCSHCHDLAPTWRDFAKEVDGLLRIGAVNCGDDRMLCRMKGVNSYPSLIFRSG
MAPVKYHGDRSKESLVSFAMQHVRSTVTELTGTFVNSIQTAFAAGIGWLITFCSKGGDCLTSQTRLRLS
GMLDGLVNVGWMDCATQDNLCKSLDITTTTAYFPPGATLNNKEKNSILFLNSLDAKEIYLEVIHNLPDF
ELL SANTLEDRLAHRWLLFFHFGKNENSNDPELKKLTKLLKNDHIQVGRFDCSSAPDICSPLYVFQPSL
AVFKGGQTKYEYIHHGKILYDILAFAKESVNSHVTTLGPQNFPANDKEPWLVDFFAPWCPCPCRALPEL
RRASNLLYQQLKFGTLDCTVHEGLCNMYNIQAYPTTVVFNQSNIEHEGHHSAEQILEFIEDLMNPSVVS
LTPTTFNELVTQRKHNEVVMVDFYSPWCHPCQVLMPEWKRMARTLTGLINVGSIDCQQYHSFCAQENVQR
YPEIRFFPPKSNKAYHYHSYNGWNRDAYSLRIWGLGFLPQVSTDLTPQTFSEKVLQGNHWVIDFYAPWC
GPCQNFAPFELLARMIKGVKAGKVDCAQAYATCQKAGIRAYPTVKFYFYERAKRNFQEEQINTRDAKA
IAALISEKLETLRNQGKRKDEL
  
```

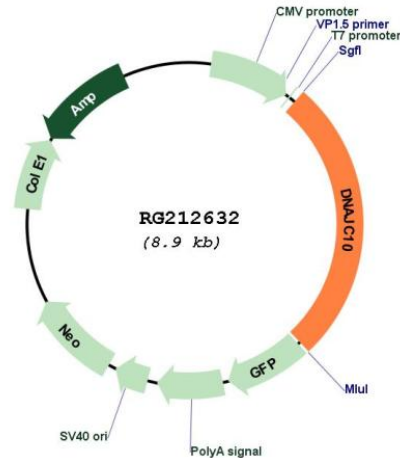
TRTRPLE - GFP Tag - V

Restriction Sites: SgfI-MluI

Cloning Scheme:

Cloning sites used for ORF Shuttling:



Plasmid Map:


ACCN: NM_018981

ORF Size: 2379 bp

OTI Disclaimer: Due to the inherent nature of this plasmid, standard methods to replicate additional amounts of DNA in *E. coli* are highly likely to result in mutations and/or rearrangements. Therefore, OriGene does not guarantee the capability to replicate this plasmid DNA. Additional amounts of DNA can be purchased from OriGene with batch-specific, full-sequence verification at a reduced cost. Please contact our customer care team at custsupport@origene.com or by calling 301.340.3188 option 3 for pricing and delivery.

The molecular sequence of this clone aligns with the gene accession number as a point of reference only. However, individual transcript sequences of the same gene can differ through naturally occurring variations (e.g. polymorphisms), each with its own valid existence. This clone is substantially in agreement with the reference, but a complete review of all prevailing variants is recommended prior to use. [More info](#)

OTI Annotation: This clone was engineered to express the complete ORF with an expression tag. Expression varies depending on the nature of the gene.

Components: The ORF clone is ion-exchange column purified and shipped in a 2D barcoded Matrix tube containing 10ug of transfection-ready, dried plasmid DNA (reconstitute with 100 ul of water).

Reconstitution Method:

1. Centrifuge at 5,000xg for 5min.
2. Carefully open the tube and add 100ul of sterile water to dissolve the DNA.
3. Close the tube and incubate for 10 minutes at room temperature.
4. Briefly vortex the tube and then do a quick spin (less than 5000xg) to concentrate the liquid at the bottom.
5. Store the suspended plasmid at -20°C. The DNA is stable for at least one year from date of shipping when stored at -20°C.

RefSeq:	NM_018981.4
RefSeq Size:	5921 bp
RefSeq ORF:	2382 bp
Locus ID:	54431
UniProt ID:	Q8IXB1
Cytogenetics:	2q32.1
Domains:	Dnaj, thiored
Protein Families:	Druggable Genome, Transmembrane
Gene Summary:	This gene encodes an endoplasmic reticulum co-chaperone which is part of the endoplasmic reticulum-associated degradation complex involved in recognizing and degrading misfolded proteins. The encoded protein reduces incorrect disulfide bonds in misfolded glycoproteins. Alternatively spliced transcript variants encoding multiple isoforms have been observed for this gene. [provided by RefSeq, Oct 2012]