

Product datasheet for **RG212628**

DLL4 (NM_019074) Human Tagged ORF Clone

Product data:

Product Type:	Expression Plasmids
Product Name:	DLL4 (NM_019074) Human Tagged ORF Clone
Tag:	TurboGFP
Symbol:	DLL4
Synonyms:	AOS6; delta4; hdelta2
Mammalian Cell Selection:	Neomycin
Vector:	pCMV6-AC-GFP (PS100010)
E. coli Selection:	Ampicillin (100 ug/mL)



[View online »](#)

ORF Nucleotide Sequence:

>RG212628 representing NM_019074
 Red=Cloning site Blue=ORF Green=Tags(s)

TTTTGTAATACGACTCACTATAGGGCGGCCGGGAATTCGTCGACTGGATCCGGTACCGAGGAGATCTGCC
 GCC**CGGATCGCC**

ATGGCGGCAGCGTCCCGAGCGCCTCTGGCTGGCGCTACTGCTGCTGGTGGCACTTTGGCAGCAGCGG
 CGGCCGGCTCCGGCGTCTTCCAGCTGCAGCTGCAGGAGTTCATCAACAGCGCGGCGTACTGGCCAGTGG
 GCGGCCTTGCGAGCCCGCTGCCGGACTTCTTCCGCGTCTGCCTTAAGCACTTCCAGGCGGTCTGCTCG
 CCCGGACCCTGCACCTTCGGGACCGTCTCCACGCCGATTGGGCACCACTCCTTCGCTGTCCGGGACG
 ACAGTAGCGGGGGGGCGCAACCCTCTCCAAGTCCCTTCAATTTACCTGGCCGGTACCTTCTCGCT
 CATCATCGAAGCTTGGCAGCGCCAGGAGACGACCTGCGGCCAGAGGCCTTGCCACCAGATGCACTCATC
 AGCAAGATCGCCATCCAGGGCTCCCTAGCTGTGGGTGAGAAGTGGTTATTGGATGAGCAAACCAGCACCC
 TACAAGGCTGCGTACTTACCGGGTCACTGCAGTGACAAGTACTATGGAGACAAGTCTCCCGCT
 GTGCAAGAAGCGCAATGACCACTTCGGCCACTATGTGTGCCAGCCAGATGGCAACTTGTCTGCCTGCC
 GGTGGACTGGGGAATATTGCCAACAGCCTATCTGTCTTTCGGGCTGTATGAACAGAATGGCTACTGCA
 GCAAGCCAGCAGAGTGCCTCTGCCGCCAGGCTGGCAGGGCCGGCTGTGTAAACGAATGCATCCCCACAA
 TGGCTGTCCGACCGCACCTGCAGCACTCCCTGGCAATGTAAGTGTGATGAGGGCTGGGGAGGCCTGTTT
 TGTGACCAAGATCTCAACTACTGACCCACCCTCCCATGCAAGAATGGGGCAACGTGCTCCAACAGTG
 GGCAGCGAAGCTACACCTGCACCTGTGCGCCAGGCTACACTGGTGTGGACTGTGAGCTGGAGCTCAGCGA
 GTGTGACAGCAACCCCTGTGCAATGGAGGCAGCTGTAAAGACCAGGAGGATGGCTACCCTGCCTGTGT
 CCTCCGGGCTACTATGGCCTGCATTGTGAACACAGCACCTTGAGCTGCGCCGACTCCCCCTGCTTCAATG
 GGGGCTCCTGCCGGGAGCGCAACCAGGGGCAACTATGCTTGTGAATGTCCCCCAACTTCACCGGCTC
 CAACTGCGAGAAGAAAGTGGACAGGTGCACCAGCAACCCCTGTGCCAACGGGGACAGTGCCTGAACCGA
 GGTCCAAGCCGCATGTGCCGCTGCCGCTCTGGATTACGGGCACCTACTGTGAATCCACGTGAGCGACT
 GTGCCCGTAAACCCTTGCGCCACGGTGGCACTTGCATGACCTGGAGAATGGGCTCATGTGCACCTGCC
 TGCCGGCTTCTTGCCGACGCTGTGAGGTGCGGACATCCATCGATGCCTGTGCCTCGAGTCCCTGCTTC
 AACAGGGCCACCTGTACACCGACCTCTCCACAGACACCTTTGTGTGCAACTGCCCTTATGGCTTTGTGG
 GCAGCCGCTGCGAGTTCCTCGTGGGCTTGGCGCCAGCTTCCCTGGGTGGCCGCTCGCTGGGTGTGGG
 GCTGGCAGTGTGCTGGTACTGCTGGGCATGGTGGCAGTGGCTGTGCGGCAGCTGCGGCTTCGACGGCCG
 GACGACGGCAGCAGGGAAGCCATGAACAAGTGTGCGACTTCCAGAAGGACAACCTGATTCTGCCGCC
 AGCTTAAAAACACAACCCAGAAGAAGGAGCTGGAAGTGGACTGTGCCTGGACAAGTCCAAGTGTGGCAA
 ACAGCAAAACCACACATTGGACTATAATCTGGCCCCAGGGCCCTGGGGCGGGGGACCATGCCAGGAAAG
 TTTCCCCACAGTGACAAGAGCTTAGGAGAGAAGGCCCACTGCGGTTACACAGTGAAGGCCAGAGTGTG
 GGATATCAGCGATATGCTCCCCAGGGACTCCATGTACCAGTCTGTGTGTTGATATCAGAGGAGAGGAA
 TGAATGTGTCATTGCCACGGAGGTA

AG**CGGACCG**ACGCGTACGCGGCCGCTCGAG - GFP Tag - GTTTAA

Protein Sequence: >RG212628 representing NM_019074
 Red=Cloning site Green=Tags(s)

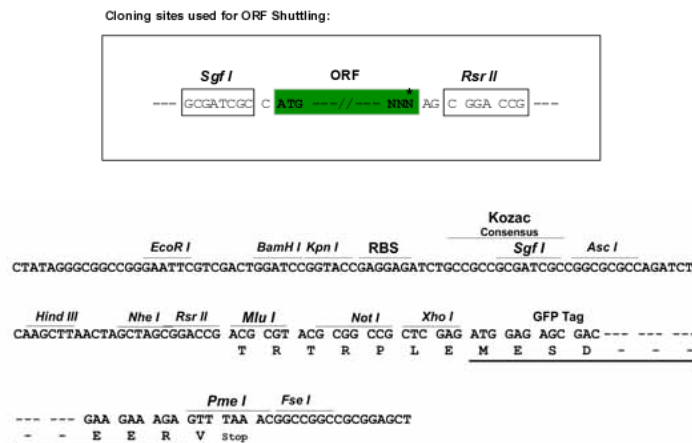
```

MAAASRSASGWALLLLVALWQQRRAAGSGVFQLQLQEFINERGLVLSGRPCPEGCRTFFRVCLKHFQAVVS
PGPCTFGTVSTPVLGTNSFAVRDDSSGGGRNPLQLPFNF TWPGTFSLII EAWHAPGDDL RPEALPPDALI
SKIAIQGSLAVGQNWLLDEQSTLTRLRYSYRVICSDNYGDNCSRLCKKRNDHF GHYVCQPDGNSCLP
GWTGEYCQQPICLSGCHEQNGYCSKPAECLCRPGWQGRLCNECIPHNGCRHGTCSTPWQCTCDEGWGGLF
CDQDLNYCTHHSPCKNGATCSNSGQRSYTCTCRPGYTGVDCLELSECDSNPCRNGGSKDQEDGYHCLC
PPGYGLHCEHSTLSCADSPCFNGGSCRERNQGANYACECPPNFTGSNCEKKVDRCTSNPCANGGQCLNR
GPSRMCRCPGFTGT YCELHVSDCARNPCA HGGTCHDLENGLMCTCPAGFSGRRCEVRTSIDACASSPCF
NRATCYTDLSTDTFVCNCPYGFVGSRCFVGLPPSFPWVAVSLGVGLAVLLVLLGMVAVAVRQLRRLRRP
DDGSREAMNNSDFQKDNLIPAAQLKNTNQKKELEVDCGLDKSNCGKQQNHTLDYNLAPGPLGRGTMPGK
FPHSDKSLGEKAPLR LHSEKPECRISAICSPRDSMYQSVCLISEERNECVIATEV
  
```

SGP TRRRLE - GFP Tag - V

Restriction Sites: SgfI-RsrII

Cloning Scheme:



ACCN: NM_019074

ORF Size: 2055 bp

OTI Disclaimer: The molecular sequence of this clone aligns with the gene accession number as a point of reference only. However, individual transcript sequences of the same gene can differ through naturally occurring variations (e.g. polymorphisms), each with its own valid existence. This clone is substantially in agreement with the reference, but a complete review of all prevailing variants is recommended prior to use. [More info](#)

OTI Annotation: This clone was engineered to express the complete ORF with an expression tag. Expression varies depending on the nature of the gene.

Components: The ORF clone is ion-exchange column purified and shipped in a 2D barcoded Matrix tube containing 10ug of transfection-ready, dried plasmid DNA (reconstitute with 100 ul of water).

Reconstitution Method:

1. Centrifuge at 5,000xg for 5min.
2. Carefully open the tube and add 100ul of sterile water to dissolve the DNA.
3. Close the tube and incubate for 10 minutes at room temperature.
4. Briefly vortex the tube and then do a quick spin (less than 5000xg) to concentrate the liquid at the bottom.
5. Store the suspended plasmid at -20°C. The DNA is stable for at least one year from date of shipping when stored at -20°C.

RefSeq: [NM_019074.4](#)

RefSeq Size: 3383 bp

RefSeq ORF: 2058 bp

Locus ID: 54567

UniProt ID: [Q9NR61](#)

Cytogenetics: 15q15.1

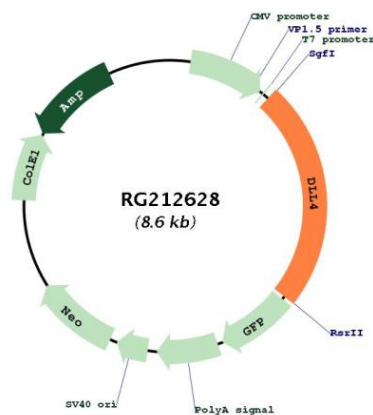
Domains: DSL, EGF

Protein Families: Cancer stem cells, Druggable Genome, ES Cell Differentiation/IPS, Stem cell relevant signaling - DSL/Notch pathway, Transmembrane

Protein Pathways: Notch signaling pathway

Gene Summary: This gene is a homolog of the Drosophila delta gene. The delta gene family encodes Notch ligands that are characterized by a DSL domain, EGF repeats, and a transmembrane domain. [provided by RefSeq, Jul 2008]

Product images:



Circular map for RG212628