

Product datasheet for **RG212623**

KRT31 (NM_002277) Human Tagged ORF Clone

Product data:

Product Type: Expression Plasmids
Product Name: KRT31 (NM_002277) Human Tagged ORF Clone
Tag: TurboGFP
Symbol: KRT31
Synonyms: Ha-1; HA1; hHa1; KRTHA1
Mammalian Cell Selection: Neomycin
Vector: pCMV6-AC-GFP (PS100010)
E. coli Selection: Ampicillin (100 ug/mL)
ORF Nucleotide Sequence: >RG212623 representing NM_002277
Red=Cloning site Blue=ORF Green=Tags(s)

TTTTGTAATACGACTCACTATAGGGCGGCCGGAATTCGTCGACTGGATCCGGTACCGAGGAGATCTGCC
GCC**CGATCGCC**

ATGCCCTACAACCTCTGCCTGCCAGCCTGAGCTGCCGCACCAGCTGCTCCTCCCGGCCCTGCGTGCCCC
CCAGCTGCCACAGCTGCACCCTGCCCGGGGCTGCAACATCCCCGCAATGTGAGCAACTGCAACTGGTT
CTGCGAGGGCTCCTTCAATGGTAGCGAGAAGGAGACTATGCAGTTCCTGAACGACCGCTGGCCAGCTAC
CTGGAGAAAGTGCCTCAGCTGGAGCGGGACAACCGGAGCTGGAGAACCTCATCCGGGAGCGGTCTCAGC
AGCAGGAGCCCTTGCTGTGCCCCAGTTACCAGTCTATTTAAGACCATTGAGGAGCTCCAGCAGAAGAT
CCTGTGTACCAAGTCTGAGAATGCCAGGCTTGTGGTGCAGATCGACAACGCCAAGCTGGCTGCGGATGAT
TTCAGAACCAAGTACCAGACCGAGCTGTCCCTGCGGCAGCTGGTGGAGTCGGACATCAACGGTCTGCGCA
GGATCCTGGATGAGCTGACCCTGTGCAAGTCCGACCTGGAGGCCAGGTGGAGTCCCTGAAGGAGGAGCT
GCTCTGCCTCAAGAGCAACCATGAGCAGGAGGTCAATACCCTGCGCTGCCAGCTTGAGACCGCCTCAAT
GTGGAGGTGGATGCTGCTCCACTGTGGACCTGAATCGGGTGTGAACGAGACCAGGAGTCAGTATGAGG
CCCTGGTGGAAACCAACCGCAGGGAAGTGGAGCAATGGTTCACCACGCAGACCAGGAGCTGAACAAGCA
GGTGGTATCCAGCTCAGAGCAGCTGCAGTCTACCAGGCGGAGATCATCGAGCTGAGACGCACAGTCAAC
GCCCTGGAGATCGAGCTGCAGGCCAGCACAACCTGCGAGACTCTGGAAAACACGCTGACAGAGAGTG
AGGCCCGCTACAGCTCCAGCTGTCCAGGTGCAGAGCCTGATCACCACAGTGGAGTCCAGCTGGCGGA
GATCCGCAAGTGCCTGGAGCGGCAAGACAGGAGTACCAGGTGCTGCTGGATGTGCGTGCCCGGCTGGAG
TGTGAGATCAACACATACCGAGCCTGCTGGAGAGCGAGGACTGCAATCTGCCAGCAATCCCTGTGCCA
CGACCAACCGCTGCAGCAAGCCATCGGACCCTGTCTCTCCAATCCCTGTACCTCTTGTGTCCTCCTGC
CCCCTGCACACCCTGTGCCCCACGCCCGCTGTGGGCCCTGCAATTCCTTCGTGCGC

AGCGGACCGACGCGTACGCGGCCGCTCGAG - GFP Tag - GTTTAA



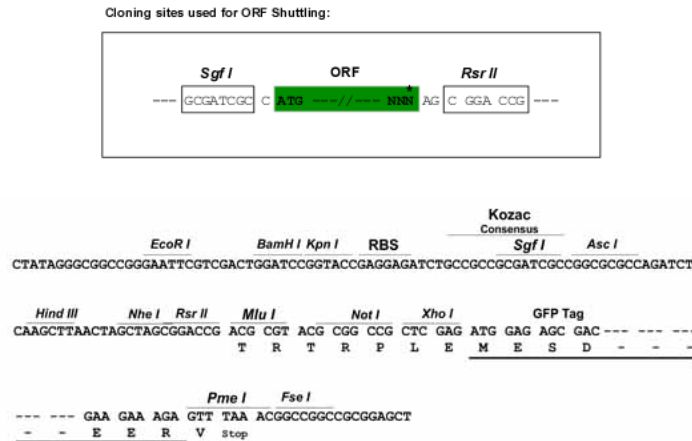
Protein Sequence: >RG212623 representing NM_002277
 Red=Cloning site Green=Tags(s)

MPYNFCLPSLSCRTSCSSRPCVPPSCHSCTLPGACNIPANVSNWNFCEGSFNGSEKETMQFLNDRASY
 LEKVRQLERDNAELENLIRERSQQEPELLCPSYQSYFKTIEELQKILCTKSENARLVVQIDNAKLAADD
 FRTKYQTELSLRQLVESDINGLRRILDELTLCKSDLEAQVESLKEELLCLKSNHEQEVNLRCLGDRLN
 VEVDAAPTVDLNRVLNETRSQYEALVETNRREVEQWFTTQTEELNKQVVSSEQLQSYQAEIIELRRTVN
 ALEIEIQAQHNL RDSLENTL TESEARYSSL SQVQSLITNVESQLAEIRSDLERQNEYQVLLDVRARLE
 CEINTYRSLLESEDCNLPSNPCATTNACSKPIGPCLSNPCTSCVPPAPCTPCAPRPRCGPCNSFVR

SGPTRRRLE - GFP Tag - V

Restriction Sites: SgfI-RsrII

Cloning Scheme:



ACCN: NM_002277

ORF Size: 1248 bp

OTI Disclaimer: The molecular sequence of this clone aligns with the gene accession number as a point of reference only. However, individual transcript sequences of the same gene can differ through naturally occurring variations (e.g. polymorphisms), each with its own valid existence. This clone is substantially in agreement with the reference, but a complete review of all prevailing variants is recommended prior to use. [More info](#)

OTI Annotation: This clone was engineered to express the complete ORF with an expression tag. Expression varies depending on the nature of the gene.

Components: The ORF clone is ion-exchange column purified and shipped in a 2D barcoded Matrix tube containing 10ug of transfection-ready, dried plasmid DNA (reconstitute with 100 ul of water).

Reconstitution Method:

1. Centrifuge at 5,000xg for 5min.
2. Carefully open the tube and add 100ul of sterile water to dissolve the DNA.
3. Close the tube and incubate for 10 minutes at room temperature.
4. Briefly vortex the tube and then do a quick spin (less than 5000xg) to concentrate the liquid at the bottom.
5. Store the suspended plasmid at -20°C. The DNA is stable for at least one year from date of shipping when stored at -20°C.

RefSeq: [NM_002277.3](#)

RefSeq Size: 1616 bp

RefSeq ORF: 1251 bp

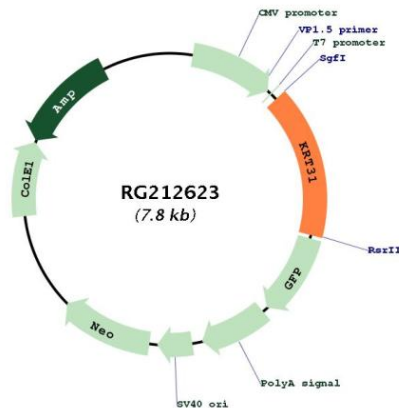
Locus ID: 3881

UniProt ID: [Q15323](#)

Cytogenetics: 17q21.2

Gene Summary: The protein encoded by this gene is a member of the keratin gene family. As a type I hair keratin, it is an acidic protein which heterodimerizes with type II keratins to form hair and nails. The type I hair keratins are clustered in a region of chromosome 17q12-q21 and have the same direction of transcription. [provided by RefSeq, Jul 2008]

Product images:



Circular map for RG212623