

## Product datasheet for **RG212597**

### PRSS21 (NM\_144957) Human Tagged ORF Clone

#### Product data:

Product Type:	Expression Plasmids
Product Name:	PRSS21 (NM_144957) Human Tagged ORF Clone
Tag:	TurboGFP
Symbol:	PRSS21
Synonyms:	ESP-1; ESP1; TEST1; TESTISIN
Mammalian Cell Selection:	Neomycin
Vector:	pCMV6-AC-GFP (PS100010)
E. coli Selection:	Ampicillin (100 ug/mL)
ORF Nucleotide Sequence:	>RG212597 representing NM_144957 Red=Cloning site Blue=ORF Green=Tags(s)

TTTTGTAATACGACTCACTATAGGGCGGCCGGAATTCGTCGACTGGATCCGGTACCGAGGAGATCTGCC  
GCC**CGATCGCC**

ATGGGCGCGCGGGGCGCTGCTGCTGGCGCTGCTGCTGGCTCGGGCTGGACTCAGGAAGCCGGAGTCGC  
AGGAGGCGGCGCCGTTATCAGGACCATGCGGCCGACGGGTCATCACGTCGCGCATCGTGGGTGGAGAGGA  
CGCCGAACCTCGGGCGTTGGCCGTGGCAGGGGAGCCTGCGCCTGTGGGATCCCACGTATCGGGAGTGAGC  
CTGCTCAGCCACCCTGGGCACTCACGGCGGCGCACTGCTTTGAAACCTATAGTGACCTTAGTGATCCCT  
CCGGGTGGATGGTCCAGTTTGGCCAGCTGACTTCCATGCCATCCTTCTGGAGCCTGCAGGCCTACTACAC  
CGTTACTTCGTATCGAATATCTATCTGAGCCCTCGCTACCTGGGGAATTCACCCATGACATTGCCTTG  
GTGAAGCTGTCTGCACCTGTCACCTACACTAAACACATCCAGCCCATCTGTCTCCAGGCCTCCACATTTG  
AGTTTGAGAACCGGACAGACTGCTGGGTGACTGGCTGGGGTACATCAAAGAGGATGAGGCACTGCCATC  
TCCCCACACCCTCCAGGAAGTTCAGGTGCGCATCATAAACAACCTATGTGCAACCACCTCTTCTCAAG  
TACAGTTTCCGCAAGGACATCTTTGGAGACATGGGTGACTCAGGTGGACCCTTGGCCTGTAACAAGAAATG  
GACTGTGGTATCAGATTGGAGTCGTGAGCTGGGAGTGGGCTGTGGTCCGCCAATCGGCCCGGTGTCTA  
CACCAATATCAGCCACCCTTTGAGTGGATCCAGAAGCTGATGGCCAGAGTGGCATGTCCCAGCCAGAC  
CCCTCTGGCCGCTACTTTTTCCCTTCTCTGGGCTCTCCACTCCTGGGCGCGTC

**ACGCGT**ACGCGGCCGCTCGAG - GFP Tag - GTTTAA



[View online »](#)

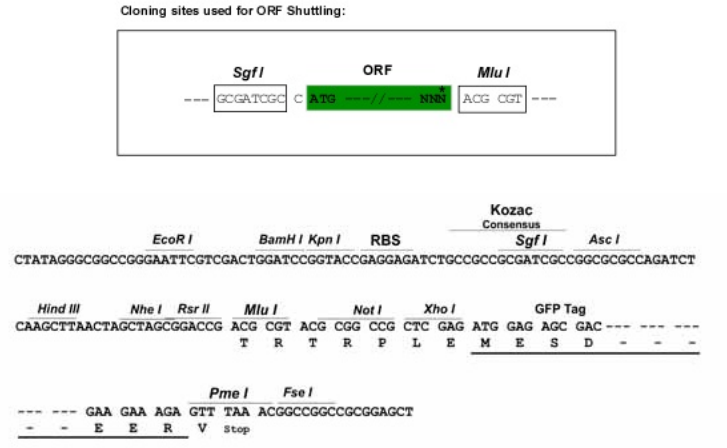
Protein Sequence: >RG212597 representing NM\_144957  
 Red=Cloning site Green=Tags(s)

MGARGALLLALLLARAGLRKPESEQEAAPLSGPCGRRVITSRIVGGEDAELGRWPWQGLRLWDSHVCVGS  
 LLSHRWALTAAHCFETYSDLSDPSGWMVQFGQLTSMPSFWSLQAYYTRYFVSNIYLSPLYLGNSPYDIAL  
 VKLSAPVYTKHIQPICLQASTFEFENRTDCWVTGWYIKEDALPSPHTLQEVQVAIINNSMCNHLFLK  
 YSFRKIDIFGDMGDSGGPLACNKNGLWYQIGVVSWSGVGCGRPNRPGVYTNISHHFEWIQKLMAQSGMSQPD  
 PSWPLFFPLLWALPLLGPV

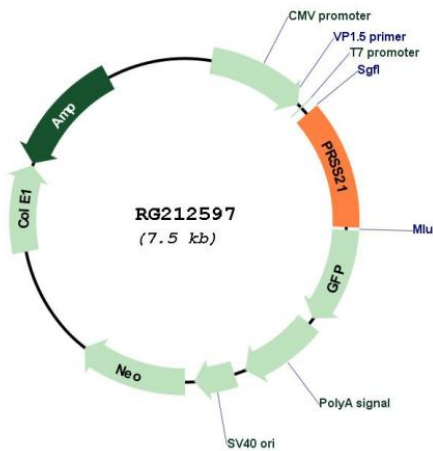
TRTRPLE - GFP Tag - V

Restriction Sites: SgfI-MluI

Cloning Scheme:



Plasmid Map:



ACCN: NM\_144957

ORF Size: 900 bp

<b>OTI Disclaimer:</b>	The molecular sequence of this clone aligns with the gene accession number as a point of reference only. However, individual transcript sequences of the same gene can differ through naturally occurring variations (e.g. polymorphisms), each with its own valid existence. This clone is substantially in agreement with the reference, but a complete review of all prevailing variants is recommended prior to use. <a href="#">More info</a>
<b>OTI Annotation:</b>	This clone was engineered to express the complete ORF with an expression tag. Expression varies depending on the nature of the gene.
<b>Components:</b>	The ORF clone is ion-exchange column purified and shipped in a 2D barcoded Matrix tube containing 10ug of transfection-ready, dried plasmid DNA (reconstitute with 100 ul of water).
<b>Reconstitution Method:</b>	<ol style="list-style-type: none"><li>1. Centrifuge at 5,000xg for 5min.</li><li>2. Carefully open the tube and add 100ul of sterile water to dissolve the DNA.</li><li>3. Close the tube and incubate for 10 minutes at room temperature.</li><li>4. Briefly vortex the tube and then do a quick spin (less than 5000xg) to concentrate the liquid at the bottom.</li><li>5. Store the suspended plasmid at -20°C. The DNA is stable for at least one year from date of shipping when stored at -20°C.</li></ol>
<b>RefSeq:</b>	<a href="#">NM_144957.3</a>
<b>RefSeq Size:</b>	1135 bp
<b>RefSeq ORF:</b>	903 bp
<b>Locus ID:</b>	10942
<b>UniProt ID:</b>	<a href="#">Q9Y6M0</a>
<b>Cytogenetics:</b>	16p13.3
<b>Protein Families:</b>	Druggable Genome
<b>Gene Summary:</b>	This gene encodes a cell-surface anchored serine protease, which is a member of the trypsin family of serine proteases. The encoded protein is predicted to be active on peptide linkages involving the carboxyl group of lysine or arginine. The encoded protein localizes to the cytoplasm and the plasma membrane of premeiotic testicular germ cells and may be involved in progression of testicular tumors of germ cell origin. Alternatively spliced transcript variants encoding multiple isoforms have been observed for this gene. [provided by RefSeq, Jul 2012]