

## Product datasheet for **RG212593**

### ST7L (NM\_138729) Human Tagged ORF Clone

#### Product data:

Product Type:	Expression Plasmids
Product Name:	ST7L (NM_138729) Human Tagged ORF Clone
Tag:	TurboGFP
Symbol:	ST7L
Synonyms:	FAM4B; ST7R; STLR
Mammalian Cell Selection:	Neomycin
Vector:	pCMV6-AC-GFP (PS100010)
E. coli Selection:	Ampicillin (100 ug/mL)



[View online »](#)

**ORF Nucleotide Sequence:**

>RG212593 representing NM\_138729  
 Red=Cloning site Blue=ORF Green=Tags(s)

TTTTGTAATACGACTCACTATAGGGCGGCCGGGAATTCGTCGACTGGATCCGGTACCGAGGAGATCTGCC  
 GCC**GCGATCGCC**

ATGGCGGACCGTGGCGGCGTGGGTGAAGCCGACGCTGTTGGAGCGTCTCCTGCATCTGTCCCTGGCCTAA  
 ACCCGACGCTAGGCTGGAGGGAGCGACTGCGGGCCGGCTGGCGGGGACTGGGGCCCTCGTTGGTTTCGT  
 GGCGGGGCTGGGCTGCTTTACGCCCTGAGGATCCCTTTGAGGCTGTGTGAGAATTTGGCAGCGGTGACT  
 GTATTTTTAAATTCATTGACACCCAAATTCATGTGGCACTTACAGGGACCTCTTCATTGATATCAGGAC  
 TAATATTTATATTTGAATGGTGGTACTTCCATAAGCATGGCACATCTTTTATTGAGCAAGTATCTGTAAG  
 CCATTTGCAACCACTGATGGGAGGAACAGAGAGCAGCATTTCCAGAACCAGGTTCTCCTTCGAGGAACAGA  
 GAAATGAAACCAGCAGACAGAATTTGTCAGAATGTAAGGTATGGAGAAACCCTCTAAATCTTTTCAGAG  
 GAGCAGAATATAGGAGATACACTTGGGTGACTGGTAAAGAGCCACTTACATACTATGACATGAACCTGTC  
 AGCTCAGGACCATCAGACCTTTTTACCTGTGACACAGATTTTTACGTCCTTCAGACACAGTTATGCAG  
 AAGGCTTGGAGGGAAAGAAATCCTCCAGCTCGAATCAAAGCAGCCTATCAAGCTTTAGAATTAACAATG  
 ACTGTGCCACTGCATATGTTCTACTGGTGGAGGAAGAAGCAACAATATTGTAGATGCTGAAAGGTTATT  
 TAAACAGGCACTCAAGGCAGGAGAAACAATTTATAGGCAGTCACAGCAGTGCCAGCACAAAGTCCCTCAG  
 CATGAAGCTCAACTGAGGAGAGATACCAATGACTGGTATATATTAAGAAGAGATTGGCAATGTGTGCAA  
 GAAATTAGGAAGAATAAGAGAAGCAGTAAAAATAAGAGAGATTTGATGAAAGAATTTCTCCTCTTAC  
 CATGTTGAACATCCATGAAAATCTTTAGAATCACTTTTAGAATTACAGGCCTATCCAGATGTTCCAGGCA  
 GTCCTAGCAAAAATGATGATATAAGCCTTCCAAAGTCAGCAGCAATCTGTTACACAGCAGCACTGTTGA  
 AGACAAGGACTGTTTCAGAAAAATCTCTCCAGAAACAGCCTCCAGAAGAGGATTAAGCACAGCAGAAAT  
 TAATGCCGTGGAAGCAATTCATAGAGCTGTGGAATTTAATCCTCATGTTCCAAAAATTTTATTAGAGATG  
 AAAAGTTAATTTTACCTCCAGAACACATTCTGAAACGGGGTGATAGTGAAGCAATTGCCTATGCTTTCT  
 TTCATCTTCAGCACTGGAACGAATAGAAGGTGCTCTTAATCTGTTACAGTGTACATGGGAAGGCACTTT  
 TAGAATGATTCCATACCCGTTAGAGAAAGGACATCTATTTTACCCTTATCCAGCTGCACAGAGACGGCT  
 GATAGAGAGCTATTACCTACCTTTCATCATGTTTCTGTTTACCCAAAAAAGGAGCTTCTTTGTTTCATCC  
 ATTTACAGCAGGATTTGCTCTTACAGCAATGATAGCCATTCTCACTACCAGTTTCTGAAATCAT  
 GGGTATTTTGTAAAGCTGTAAGTATGATCTCAAGGACTGTGTAGATTATTTG

**ACGCGTACGCGGCCGCTCGAG** - GFP Tag - GTTTAA

**Protein Sequence:**

>RG212593 representing NM\_138729  
 Red=Cloning site Green=Tags(s)

MADRGGVGEAAAVGASPVPLNPTLWRRERLRAGLAGTASLWVAVGLLLYALRIPLRLCENLAAVT  
 VFLNSLTPKFYVALTGTSSLISGLIFIFEWYFHKHGTSEIEQVSVSHLQPLMGGTESSISEPGSPSRNR  
 ENETSQNLSECKVWRNPLNLFRAEYRRTWVTGKEPLTYDMNLSAQDHQTFFTCDTDFLRPSDVTMQ  
 KAWRERNPPARIKAAAYQALELNNDATAYVLLAEEEEATTIVDAERLQKQALKAGETIYRQSQCQHQSPQ  
 HEAQLRRDNTNLYIKRRLAMCARKLGRIREAVKIMRDLMEFPPLTMLNIHENLLESLELQAYPDVQA  
 VLAKYDDISLPKSAICYTAALLKTRTVSEKFSPETASRRGLSTAEINAVEAIHRAVEFNPHVPKYLLEM  
 KSLILPPEHILKRGDSEAIAYAFFHLQHWKRIEGALNLLQCTWEGTFRMIPYPLEKHLFYYPYPSCTETA  
 DRELLPTFHHSVYPKELPLFIHFTAGFCSSSTAMIAILTHQFPEIMGIFAKAVSMISRTCDVDYL

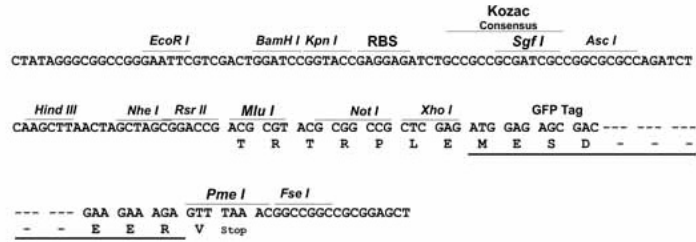
**TRTRPLE** - GFP Tag - V

**Restriction Sites:**

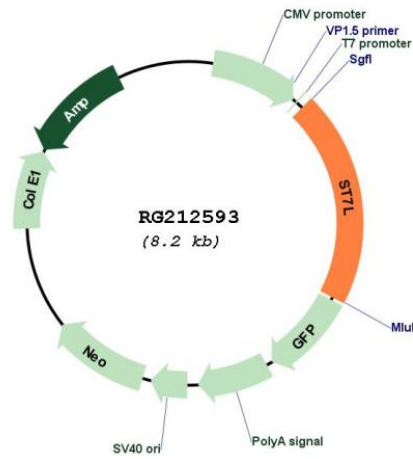
Sgfl-MluI

Cloning Scheme:

Cloning sites used for ORF Shutting:



Plasmid Map:



<b>ACCN:</b>	NM_138729
<b>ORF Size:</b>	1665 bp
<b>OTI Disclaimer:</b>	The molecular sequence of this clone aligns with the gene accession number as a point of reference only. However, individual transcript sequences of the same gene can differ through naturally occurring variations (e.g. polymorphisms), each with its own valid existence. This clone is substantially in agreement with the reference, but a complete review of all prevailing variants is recommended prior to use. <a href="#">More info</a>
<b>OTI Annotation:</b>	This clone was engineered to express the complete ORF with an expression tag. Expression varies depending on the nature of the gene.
<b>Components:</b>	The ORF clone is ion-exchange column purified and shipped in a 2D barcoded Matrix tube containing 10ug of transfection-ready, dried plasmid DNA (reconstitute with 100 ul of water).
<b>Reconstitution Method:</b>	<ol style="list-style-type: none"><li>1. Centrifuge at 5,000xg for 5min.</li><li>2. Carefully open the tube and add 100ul of sterile water to dissolve the DNA.</li><li>3. Close the tube and incubate for 10 minutes at room temperature.</li><li>4. Briefly vortex the tube and then do a quick spin (less than 5000xg) to concentrate the liquid at the bottom.</li><li>5. Store the suspended plasmid at -20°C. The DNA is stable for at least one year from date of shipping when stored at -20°C.</li></ol>
<b>RefSeq:</b>	<a href="#">NM_138729.3</a>
<b>RefSeq Size:</b>	2142 bp
<b>RefSeq ORF:</b>	1668 bp
<b>Locus ID:</b>	54879
<b>UniProt ID:</b>	<a href="#">Q8TDW4</a>
<b>Cytogenetics:</b>	1p13.2
<b>Protein Families:</b>	Transmembrane
<b>Gene Summary:</b>	This gene was identified by its similarity to the ST7 tumor suppressor gene found in the chromosome 7q31 region. This gene is clustered in a tail-to-tail manner with the WNT2B gene in a chromosomal region known to be deleted and rearranged in a variety of cancers. Several transcript variants encoding many different isoforms have been described, but some have not been fully characterized. [provided by RefSeq, Feb 2011]