

Product datasheet for **RG212578**

PLAAT2 (NM_017878) Human Tagged ORF Clone

Product data:

Product Type: Expression Plasmids
Product Name: PLAAT2 (NM_017878) Human Tagged ORF Clone
Tag: TurboGFP
Symbol: PLAAT2
Synonyms: HRASLS2; PLA1/2-2; PLAAT-2
Mammalian Cell Selection: Neomycin
Vector: pCMV6-AC-GFP (PS100010)
E. coli Selection: Ampicillin (100 ug/mL)
ORF Nucleotide Sequence: >RG212578 representing NM_017878
 Red=Cloning site Blue=ORF Green=Tags(s)

TTTTGTAATACGACTCACTATAGGGCGGCCGGAATTCGTCGACTGGATCCGGTACCGAGGAGATCTGCC
 GCC**CGATCGCC**

ATGGCTTTGGCCAGACCAAGACCGAGACTTGAGACCTGATTGAGATTTCTCGCTTTGGCTATGCACACT
 GGGCCATCTACGTGGGAGATGGCTATGTGGTCCATCTGGCTCCGGCAAGTGAAATTGCTGGAGCTGGTGC
 GGCCAGTGTCTGTCTGCCCTGACCAACAAAGCCATAGTGAAGAAGGAAGTGTGTCTGTGGTGGCTGGG
 GGAGACAACTACAGGGTCAATAACAAGCACGATGACAGATACACACCACTGCCTTCCAACAAAATCGTCA
 AGCGGGCAGAGGAGTTGGTGGGCGAGGATTGCCTTATTCGCTGACCAGTGACAAGTGCAGCACTTCGT
 GAACCATCTGCGCTATGGCGTCTCCCGCAGTGACCAGGTCACTGGTGCAGTCACGACAGTAGGTGTGGCA
 GCAGGCCCTGCTGGCTGCCGAAGCCTTGTGGGGATCCTGCTGGCCAGAAGCAAGCGGGAAGGCAA

ACGCGTACGCGGCCGCTCGAG - GFP Tag - GTTTAA

Protein Sequence: >RG212578 representing NM_017878
 Red=Cloning site Green=Tags(s)

MALARPRPRLGDLIEISRFGYAHWAIYVGDGYVHLAPASEIAGAGAASVLSALTNKAIVKHELLSVVAG
 GDNRYRVNNKHDDRYTPLPSNKIVKRAEELVGQELPYSLTSDNCEHFVNHLRYGVSRSDQVTGAVTTVGVA
 AGLLAAASLVGILLARSKRERQ

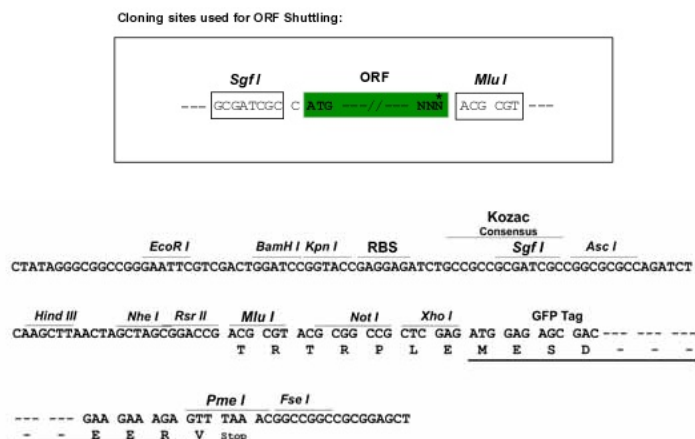
TRTRPLE - GFP Tag - V

Restriction Sites: SgfI-MluI



View online »

Cloning Scheme:



ACCN: NM 017878

ORF Size: 486 bp

OTI Disclaimer: The molecular sequence of this clone aligns with the gene accession number as a point of reference only. However, individual transcript sequences of the same gene can differ through naturally occurring variations (e.g. polymorphisms), each with its own valid existence. This clone is substantially in agreement with the reference, but a complete review of all prevailing variants is recommended prior to use. [More info](#)

OTI Annotation: This clone was engineered to express the complete ORF with an expression tag. Expression varies depending on the nature of the gene.

Components: The ORF clone is ion-exchange column purified and shipped in a 2D barcoded Matrix tube containing 10ug of transfection-ready, dried plasmid DNA (reconstitute with 100 ul of water).

Reconstitution Method:

1. Centrifuge at 5,000xg for 5min.
2. Carefully open the tube and add 100ul of sterile water to dissolve the DNA.
3. Close the tube and incubate for 10 minutes at room temperature.
4. Briefly vortex the tube and then do a quick spin (less than 5000xg) to concentrate the liquid at the bottom.
5. Store the suspended plasmid at -20°C. The DNA is stable for at least one year from date of shipping when stored at -20°C.

RefSeq: NM 017878.2

RefSeq Size: 785 bp

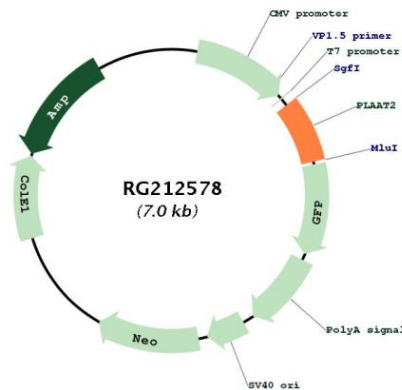
RefSeq ORF: 489 bp

Locus ID: 54979

UniProt ID: Q9NWW9

Cytogenetics:	11q12.3
Protein Families:	Druggable Genome, Transmembrane
Gene Summary:	The protein encoded by this gene has both phospholipase and acyltransferase activities and acts as a tumor suppressor. The encoded protein can hydrolyze dipalmitoylated phosphatidylcholine (PC) to palmitic acid and lyso-PC. In addition, this protein can catalyze the N-acylation of phosphatidylethanolamine and can catalyze the O-acylation of lyso-PC to form PC. [provided by RefSeq, Jul 2016]

Product images:



Circular map for RG212578