

## Product datasheet for **RG212577**

### Espin (ESPN) (NM\_031475) Human Tagged ORF Clone

#### Product data:

Product Type:	Expression Plasmids
Product Name:	Espin (ESPN) (NM_031475) Human Tagged ORF Clone
Tag:	TurboGFP
Symbol:	ESPN
Synonyms:	DFNB36; LP2654; USH1M
Mammalian Cell Selection:	Neomycin
Vector:	pCMV6-AC-GFP (PS100010)
E. coli Selection:	Ampicillin (100 ug/mL)



[View online »](#)

**ORF Nucleotide Sequence:**

>RG212577 representing NM\_031475  
 Red=Cloning site Blue=ORF Green=Tags(s)

TTTTGTAATACGACTCACTATAGGGCGGCCGGGAATTCGTCGACTGGATCCGGTACCGAGGAGATCTGCC  
 GCC**CGGATCGCC**

ATGGCCCTGGAGCAGGCGCTGCAGGCGGGCGGCAGGGCGAGCTGGACGTGCTGAGTGCCTGCACGCCG  
 CAGGCCTCCTGGGCCCTCGCTGCGCGACCCGCTGGACGCGCTGCCCGTGCAACCAGCGGCCCGCGCTGG  
 GAAGCTGCACTGTCTGCGCTTCTGTTGGAGGAAGCCGCCCTCCCGCGCGGCCCGCGCCGCAACGGC  
 GCCACACCGGCCACGACGCTCCGCCACCGGCCACCTCGCTGCCTGCAGTGGTGTGTGCGAGGGCG  
 GCTGCAGAGTGCAGGACAAAGACAATTCTGGTCCACAGTCTTGATCTGGCTGCCCGCTTCGGCCACCC  
 CGAGGTGGTGAAGTGGCTCTTGATCATGGCGTGGGGACCCACCGCGGCCACAGACATGGGCGCCCTG  
 CCTATCCACTACGCTGCCGCAAAGGAGACTTCCCCTCCCTGAGGCTTCTCGTCGAGCACTACCCTGAGG  
 GAGTGAATGCCAAACCAAGAACGGTGCCACGCCCTGTACCTGGCGTGCAGGAGGGCCACCTGGAGGT  
 GACCCAGTACCTGGTGCAGGAATGCGGCGCAGACCCGACGCGCGGCCACGACGGCATGACCCCGCTG  
 CAGCCCGCGGCGCAGATGGGCCACAGCCAGTCACTGTGGTTGGTGGAGCTGCACCGACGTGAGCCTGT  
 CCGAGCAGGACAAAGACGGCGCCACCGCATGCACTTCGCGGCGAGCCGCGGCCACACCAAGGTGCTCAG  
 CTGGCTGCTGCTGCACGGCGGGGAGATCTCGGCTGACCTGTGGGCGGGACCCCGCTGCACGACGGCCG  
 GAGAACGGGGAGCTAGAGTGTGCCAGATCCTGGTAGTGAACGGCGGGAGCTGGACGTCGCGACCGGG  
 ACGGGTACACGGCCCGCGACCTGTCCGACTTCAACGGCCACAGCCACTGCACCCGCTACCTGCGCACGGT  
 GGAGAACCTGAGCGTGGAGCACCGCGTCTTCCCGGGATCCATCCGAGAGCTGGAGGCTAAGCAGCCG  
 GATTCAGGCATGTCTCACCAATACCACGGTTCGGTCCAGCCGCTGAACCTTGACCTCAGCTCGCCTA  
 CCAGCACCTCTCAACTACGACTCCTGCTCCTCCAGCCACTCCAGCATCAAGGGCCAGCACCTCCATG  
 TGGGCTTCCAGCGCTAGAGCTGCAGACATACAGAGCTACATGGACATGCTGAACCCGGAGCTGGGCTG  
 CCTCGGGGACGATTGGGAAGCCACACCCCCACCCCCACCCAGCTTCCCCCGCACCCCGCCCC  
 CAGGCACCAACTGCCCCACCCCCACCTGGTACCCAGCTCCCAAGCCTCCTGTAGGACCACAGGCAGC  
 TGACATCTACATGCAGACCAAGAACAACCTCCGCCAGTGGAGACAGAGGCCCTCAAGAAGGAGCTGAGC  
 TCCTGTGACGGCCACGACGGGCTGCGGAGGCAGGACTCCAGCCGCAAGCCCGCGCCTTCAGCAAGCAGC  
 CCAGCACGGGGACTACTACCGCAGTGGGCCGCTGCCCGGCGAGACGCTGGCCGACGCCCGGGCAT  
 GCGCACAGCGAGGAGGTGCGTGCCCGCAGCCCGCGCGCCGGCTGCCCGCCTCGGCCCTGCCGCC  
 CGCGGCTCACTCGAAGGCCCTCCGCTCCCCGCGAGGCGCGCTGCTTCTGGGAACCATGTTCTTAACG  
 GCTGCGCCGCGGACCCCAAGGCGTCCAGGGAGTGCACCTGCCGCCCCACCGCCGCCGCCGCCCTGCC  
 GGAGGCCGCGAGTTCGCCACCGCCGCCCCGCTCTGCCCTCGAGAGCGCTGGCCCTGGCTGCGGGCAG  
 CGCCGCTCCTCCTCGTCCACCGGCAGCACAAGTCTTTCAACATGATGTCCCGACGGGCGACAACCTCGG  
 AGCTACTGGTGAAGTAAAGGCAGGCAAGAGCCTGAAGCCGACGCCCCAGAGCAAGGGGCTGACCACAGT  
 GTTCTCAGGCATCGGGCAGCCGGCTTCCAGCCGATTGCGCGCTGCCTTCTGTGTACCTGCACTGTCA  
 CCAGTCCGGAGCCCCACCCGACGCTGCGGGGTTTACCGCTGCTCAATGGAAGCTTGGTCCCGTGC  
 CGCCACTACTCCTGCGCCGGGAGTGCAGCTGGACGTGGAGCTCTCATCCCCACGACGATGAGCAGGG  
 CCGGCCATCCCCGAGTGAAGCGCCAGTGATGGTGCACAAGATGCAGCTGAAGATGCAGGAGGAGGAG  
 GAGCAGAGGCGGAAGGAGGAGGAGGAGGAGGCCCGCTGGCCAGCATGCCGCTGGAGGCGGGACCTCC  
 TCGGGAAGAAGCTGGAAGAAGAGAGGGAGCAGAAGCGAAAGAGGAGGAGCGACAGAAGCAGGAGGAGT  
 GCGGCGGAGAAGGAACAGTCAGAGAAGCTGCGGACGCTGGGCTACGATGAGAGCAAGCTGGCGCCCTGG  
 CAGCGACAGGTACCTGAAGAAGGGGACATCGCTAAGTAC

**ACGGTACGCGGCCGCTCGAG** - GFP Tag - GTTTAA

**Protein Sequence:** >RG212577 representing NM\_031475  
 Red=Cloning site Green=Tags(s)

```

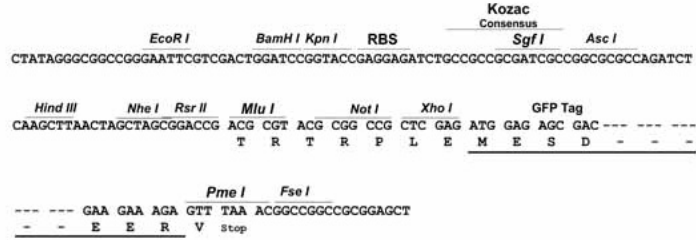
MALEQALQAARQGELDLRSLHAAGLLGPSLRDPLDALPVHHAARAGKLHCLRFLVEEAALPAAARARNG
ATPAHDASATGHLACLQWLLSQGGCRVQDKDNSGATVLHLAARFGHPEVNVNLLHHGGGDPTAATDMGAL
PIHYAAAKGDFPSLRLLVEHYPEGVNAQTKNGATPLYLACQEGHLEVTQYLVQECGADPHARAHDGMTPL
HAAAQMGHSPVIVWLVSCTDVSLSEQDKGATAMHFAASRGHTKVLSWLLLLHGGEISADLWGGTPLHDAA
ENGELECCQILVVNGAELDVRDRDGYTAADL SDFNGHSHCTRYLRTVENLSVEHRVLSRDPSAELEAKQP
DSGMSSPNTTVSVQPLNFDLSSPTSTLSNYDSCSSSHSSIKQHPPCGLSSARAADIQSYMDMLNPGL
PRGTIGKPTPPPPPSFPPPPPGTQLPPPPGYPAPKPPVGPQAADIYMQTKNKL RHVETEALKKELS
SCDGHDLRRQDSSRKPRAFSKQPSTGDYYRQLGRCPGETLAARPGMAHSEEVRRARQPARAGCPRLGPAA
RGSLEGPSAPPQAALLPGNHVPNGCAADPKASRELPLPPPPPPPLPEAASSPPPAPPLPLESAGPGCGQ
RRSSSTGSTKSFNMMSPTGDNSELLAEIKAGKSLKPTPQSKGLTTVFSGIGQPAFQPDSPSPVSPALS
PVRSPTPAAGFQPLNGLVPVPTTPAPGVQLDVEALIPTHDEQGRP IPEWKRQVMVRKMQLMQEEEEE
EQRRKEEEEEEARLASMPAWRRDLLRKKLEEEEREQKRKEEERQKQEELRREKEQSEKLRTLGYDESKLAPW
QRQVILKKGDI AKY
  
```

TRTRPLE - GFP Tag - V

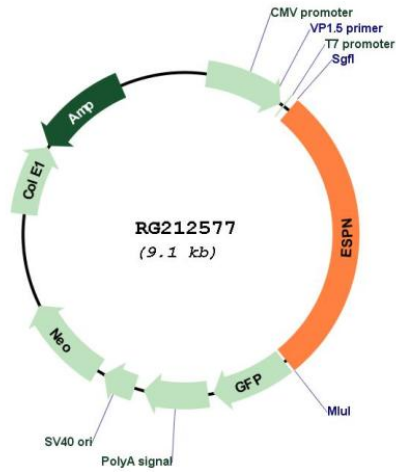
**Restriction Sites:** Sgfl-Mlul

Cloning Scheme:

Cloning sites used for ORF Shutting:



Plasmid Map:



<b>ACCN:</b>	NM_031475
<b>ORF Size:</b>	2562 bp
<b>OTI Disclaimer:</b>	The molecular sequence of this clone aligns with the gene accession number as a point of reference only. However, individual transcript sequences of the same gene can differ through naturally occurring variations (e.g. polymorphisms), each with its own valid existence. This clone is substantially in agreement with the reference, but a complete review of all prevailing variants is recommended prior to use. <a href="#">More info</a>
<b>OTI Annotation:</b>	This clone was engineered to express the complete ORF with an expression tag. Expression varies depending on the nature of the gene.
<b>Components:</b>	The ORF clone is ion-exchange column purified and shipped in a 2D barcoded Matrix tube containing 10ug of transfection-ready, dried plasmid DNA (reconstitute with 100 ul of water).
<b>Reconstitution Method:</b>	<ol style="list-style-type: none"><li>1. Centrifuge at 5,000xg for 5min.</li><li>2. Carefully open the tube and add 100ul of sterile water to dissolve the DNA.</li><li>3. Close the tube and incubate for 10 minutes at room temperature.</li><li>4. Briefly vortex the tube and then do a quick spin (less than 5000xg) to concentrate the liquid at the bottom.</li><li>5. Store the suspended plasmid at -20°C. The DNA is stable for at least one year from date of shipping when stored at -20°C.</li></ol>
<b>RefSeq:</b>	<a href="#">NM_031475.1</a> , <a href="#">NP_113663.1</a>
<b>RefSeq Size:</b>	3542 bp
<b>RefSeq ORF:</b>	2565 bp
<b>Locus ID:</b>	83715
<b>UniProt ID:</b>	<a href="#">B1AK53</a>
<b>Cytogenetics:</b>	1p36.31
<b>Gene Summary:</b>	This gene encodes a multifunctional actin-bundling protein. It plays a major role in regulating the organization, dimensions, dynamics, and signaling capacities of the actin filament-rich, microvillus-type specializations that mediate sensory transduction in various mechanosensory and chemosensory cells. Mutations in this gene are associated with autosomal recessive neurosensory deafness, and autosomal dominant sensorineural deafness without vestibular involvement. [provided by RefSeq, Nov 2009]