

## Product datasheet for **RG212576**

### CPNE7 (NM\_014427) Human Tagged ORF Clone

#### Product data:

Product Type:	Expression Plasmids
Product Name:	CPNE7 (NM_014427) Human Tagged ORF Clone
Tag:	TurboGFP
Symbol:	CPNE7
Mammalian Cell Selection:	Neomycin
Vector:	pCMV6-AC-GFP (PS100010)
E. coli Selection:	Ampicillin (100 ug/mL)



[View online »](#)

**ORF Nucleotide Sequence:**

>RG212576 representing NM\_014427  
 Red=Cloning site Blue=ORF Green=Tags(s)

TTTTGTAATACGACTCACTATAGGGCGGCCGGGAATTCGTCGACTGGATCCGGTACCGAGGAGATCTGCC  
 GCC**CGGATCGCC**

ATGAGCGCGGGCTCGGAGCGGGGCGGGCAACCCCGGGGTTTGCCTCGCCCTGCGCCTCGAAGG  
 TGGAGCTGCGGCTCAGCTGCCGGCACCTGCTGGACCGCGACCCGCTCACCAAGTCCGACCCAGCGTGGC  
 GTTGCTGCAGCAGGCGCAGGGCCAGTGGGTGCAGGTGGGAGGAGTGGTCCGGAGCAGCCTGCAT  
 CCCGTGTTCTCCAAGGTCTTACGGTGGACTACTTTCGAGGAGGTGCAGAGGCTGCGCTTTGAGGTGT  
 ACGACACGCATGGGCCAGCGGCTTTCAGCTGTCAGGAGGACGATTTCTGGGGGGCATGGAGTGCACCT  
 GGGGCAGCCAGCCAAAAGTGGCTTCTGCAAGTCGTGATGAGAGTGTCTGTTGATGTCTGGGCCCTGCT  
 GGACACTGCGCTAAGCACTTCTGTGCTGCACGGAATCCTCACACCTGCCAGGACGGTCTTCTTTTT  
 TATTGAGGTATGATGACCTCTGCCTCCCCTGGGCGACTGCTGGCGCCGTGAGGTGGTGGAGTGCAGGGG  
 TGGCCACACGCAGGGATGGCAGATTGTGGCCAGAAGAAGGTGACCCGCCGCTGCTGCTCAAGTTTGGC  
 AGGAACGCTGGCAAGTCCACCATCACGGTATCGCCGAGGACATCTCGGGGAACAACGGTACCTGGAGC  
 TCTCCTCCGGGCCAGGAAGCTGGACGACAAGGACCTTTCAGCAAGTCCGACCCCTTCTGGAGCTCTA  
 CAGGGTCAACGACGACCAGGGCTTGCAGCTGGTGTACAGGACGGAGGTGGTGAAGAAACCTGAACCCG  
 GTGTGGGAGGCCCTCAAAGTCTCTGAGTTCCCTCTGCAGCTGCGAGGAGACAAGGCCCTAAAGTGCC  
 TGGTCTGGGATTACGACTCTCGAGGAAAGCAGCACTTTCATCGGAGAATTTCTACCACCTTCGAGGAGAT  
 GCAGAAGGCCCTTGGAGGGGGCAGGCCAGTGGGACTGTGTGAACCCAAATACAAGCAGAAGAGACGC  
 AGTTATAAGAAGTCAAGGAGTGGTCTGCTGGCTGACCTCAAGTTCACAGGGTGTACTCCTTCTGGACT  
 ATATCATGGGCGGCTGCCAGATCACTTACCCGTGGCCATTGACTTCACCGCTCCAATGGAGACCCGCG  
 GAACAGCTGCTCCCTGCACTACATCAACCCCTACCAGCCGAACGAGTACCTGAAGGCACTGGTGTCCGTG  
 GGCGAGATCTGCCAGGACTATGACAGTGACAAGAGGTTTTCCGCTTTGGGTTTGGAGCCCGGATCCCTC  
 CCAAGTATGAGGTGTCCCATGACTTTGCCATCAATTTCAACCCTGAGGACGATGAGTGTGAAGGCATCCA  
 GGGCGTGGTGGAGGCCCTACCAGAACTGCCTGCCAGGGTCCAGCTCTACGGCCCCACCAAGTGGCGCCC  
 ATCATCTCAAGGTGGCACGCGTGGCGGGCGCCGAGGAGACACCGGAAAGCCTCTCAATACTACATCC  
 TGCTGATCCTGACGACGGCGTGGTACCACATGGCCGACACACGGAGGCCATTGTGCGTGCCTCACG  
 CCTGCCATGTCCATCATCATCGTGGCGTGGGCAACGCCGACTTACCACATGCAGGTCTGGACGGC  
 GACGACGGCGTCTGCGCTCCCCAGGGGTGAGCCCGCGCTCCGGGACATCGTACAGTTCGTGCCCTTCC  
 GGGAGCTCAAGAACGCATCCCCTGCGGGCTGGCCAAGTGCCTGCTGGCCGAGGTCCCGAAGCAGGTGGT  
 GGAGTACTACAGCCACAGAGGCCTGCCCCGAGAAGCCTGGGCGTCCCTGCCGAGAGGCCAGCCAGGC  
 TGCACACCG

AG**CGGACCG**ACGCGTACGCGGCCGCTCGAG - GFP Tag - GTTTAA

**Protein Sequence:**

>RG212576 representing NM\_014427  
 Red=Cloning site Green=Tags(s)

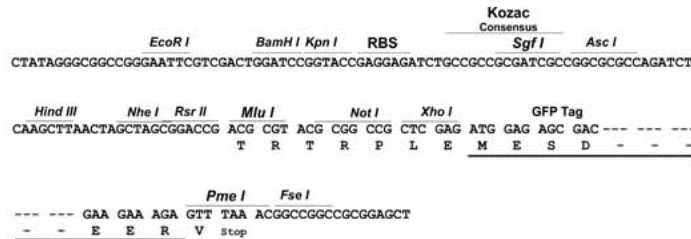
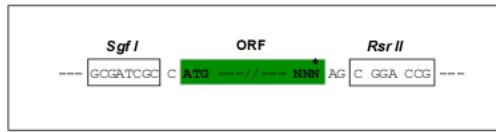
MSAGSERGAAATPGGLPAPCASKVELRLSCRHLLDRDPLTKSDPSVALLQQAQQQWVQVGRTEVVRSSLH  
 PVFVKVFTVDYYFEEVQRLRFEVYDTHGSPGFSQEDDFLGGMECTLGQPAQKWLQVVMRVSVDVLP  
 GHCAKHFLLCCTESSHLARTGPFLLRYDDLCLPWATAGAVRWWTCRGGHTQGWQIVAQKKVTRPLLLKFG  
 RNAGKSTITVIAEDISGNNGYVELSFRARKLDDKDLFSKSDPFLELYRVNDDQGLQLVYRTEVVKNNLNP  
 VWEAFKVSLSLCSCEETRPLKCLVWDYDSRGKHDFIGEFSTTFEEMQKAFEEGQAQWDCVNPYKQKRR  
 SYKNSGVVVLADLKFHRVYSFLDYIMGGCQIHFTVAIDFTASNGDPRNCSLHYINPYQPNEYLKALVSV  
 GEICQDYDSDKRFSALGFGARIPPKYEVSHDFAINFNPEDDECEGIQGVVEAYQNCLPRVQLYGPNTNAP  
 IISKVARVAAAEEESTGKASQYYILLILTDGVVTDMA DTREAIVRASRLPMSIIIVGVGNADFTDMQVLDG  
 DDGVLRSRPGEPALRDIQVFPFRELKNASPAALAKCVLAEVPKQVVEYYSHRGLPPRSLGVPAGEASPG  
 CTP

SGP**TRRRLE** - GFP Tag - V

Restriction Sites: SgfI-RsrII

Cloning Scheme:

Cloning sites used for ORF Shuttling:



ACCN: NM\_014427

ORF Size: 1899 bp

OTI Disclaimer: The molecular sequence of this clone aligns with the gene accession number as a point of reference only. However, individual transcript sequences of the same gene can differ through naturally occurring variations (e.g. polymorphisms), each with its own valid existence. This clone is substantially in agreement with the reference, but a complete review of all prevailing variants is recommended prior to use. [More info](#)

OTI Annotation: This clone was engineered to express the complete ORF with an expression tag. Expression varies depending on the nature of the gene.

Components: The ORF clone is ion-exchange column purified and shipped in a 2D barcoded Matrix tube containing 10ug of transfection-ready, dried plasmid DNA (reconstitute with 100 ul of water).

Reconstitution Method:

1. Centrifuge at 5,000xg for 5min.
2. Carefully open the tube and add 100ul of sterile water to dissolve the DNA.
3. Close the tube and incubate for 10 minutes at room temperature.
4. Briefly vortex the tube and then do a quick spin (less than 5000xg) to concentrate the liquid at the bottom.
5. Store the suspended plasmid at -20°C. The DNA is stable for at least one year from date of shipping when stored at -20°C.

RefSeq: [NM\\_014427.3](#), [NP\\_055242.1](#)

RefSeq Size: 2657 bp

RefSeq ORF: 1902 bp

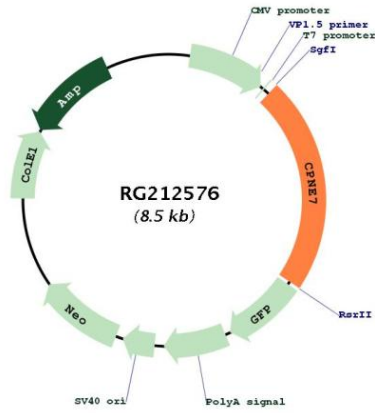
Locus ID: 27132

UniProt ID: [Q9UBL6](#)

Cytogenetics: 16q24.3

Gene Summary: This gene encodes a member of the copine family, which is composed of calcium-dependent membrane-binding proteins. The gene product contains two N-terminal C2 domains and one von Willebrand factor A domain. The encoded protein may be involved in membrane trafficking. Two alternatively spliced transcript variants encoding different isoforms have been found for this gene. [provided by RefSeq, Nov 2008]

**Product images:**



Circular map for RG212576