

Product datasheet for **RG212564**

DACT1 (NM_016651) Human Tagged ORF Clone

Product data:

Product Type:	Expression Plasmids
Product Name:	DACT1 (NM_016651) Human Tagged ORF Clone
Tag:	TurboGFP
Symbol:	DACT1
Synonyms:	DAPPER; DAPPER1; DPR1; FRODO; HDPR1; TBS2; THYEX3
Mammalian Cell Selection:	Neomycin
Vector:	pCMV6-AC-GFP (PS100010)
E. coli Selection:	Ampicillin (100 ug/mL)



[View online »](#)

ORF Nucleotide Sequence:

>RG212564 representing NM_016651
 Red=Cloning site Blue=ORF Green=Tags(s)

TTTTGTAATACGACTCACTATAGGGCGGCCGGGAATTCGTCGACTGGATCCGGTACCGAGGAGATCTGCC
 GCC**CGGATCGCC**

ATGAAGCCGAGTCCGGCCGGGACGGCGAAGGAGCTGGAGCCTCCGGCCGGCCCGAGGCGAGCAGCGCA
 CGGCGGAGCCCGAGGGGCGCTGGCGGGAGAAGGGCGAGGCAGACACCGAGCGGCAGCGCACCCGGGAGCG
 GCAGGAGGCCACGCTGGCCGGGCTGGCGGAGCTGGAGTACCTGCGCCAGCGCCAAGAGCTGCTGGTCAGG
 GGCGCCCTGCGCGGGCGCCGGGGTGGCGGAGCCGCTGCGCCCCGCGCTGGGGAGCTACTGGGGGAGGCGG
 CGCAGCGCAGTCGCTGGAGGAGAAGTTCTGGAGGAGAACATCTTGTGCTAAGAAAGCAATTGAAGT
 TTTGAGGCGAAGAGATGCTGGTTTGTGAATCAGTTGCAAGAGCTTGACAAGCAGATAAGTGACCTGAGA
 CTGGATGTAGAAAAGACATCTGAAGAGCACCTGGAGACAGACAGTCGGCCTAGCTCAGGGTTTTATGAGC
 TGAGTGATGGGGTTCAGGATCCCTTTCCAATTCTCTAACTCGGTGTTCACTGAGTGTTATCCAGTTG
 TCATTCCAGCACCTGCTTTTGCAGCCCCCTGGAGGCGACCTTGAGTCTCTCAGATGGTTGCCCAAATCT
 GCAGATCTCATAGGATTGTTGGAATATAAAGAAGGCCACTGTGAAGACCAGGCCTCAGGGGAGTTTGCC
 GTTCCCTCTCCACACCACAATTTAATTCCTTGATGTCATTGCAGATGTGAATCCCAAGTACCAGTGTGA
 TCTGGTGTCTAAAAACGGGAATGATGTATATCGCTATCCAGTCCACTTCATGCTGTGGCTGTGCAGAGC
 CCAATGTTTTCTCTTTGTCTGACGGGCAACCCTCTGAGGGAAGAGGACAGGCTTGAAACCATGCCAGTG
 ACATTTGCGGTGGATCTGAGCTAGATGCCGTCAAACAGACAGTTCCTTACCGTCCCAAGCAGTCTGTG
 GTCTGCTTCCCATCCTTCATCCAGCAAGAAAATGGATGGCTACATTCTGAGCCTGGTCCAGAAAAAACA
 CACCCTGTAAGGACCAACAACCAAGAACCAGCGTGAACGCTGACCCACGAAAGGGCTTCTGAGGAACG
 GAGCGTTTTGTGTAGAGCCCCGGGCGGTGTCTCACAGGGCAACAGTGTGAACCTTAAGAATTCGAAACA
 GCGGTGTCTGCCCTCTGGCGGGATACCTTCTCTGAACAATGGGACATTCTCCCCACCGAAGCAGTGGTCTG
 AAAGAATCAAAGGCCGAACAAGCCGAAAGCAAGAGGGTGCCTGCCAGAGGGCTGCCCTCAGGCGCTG
 CCTCCGACCTCAGAGTAAGCACCTGCCAAAAACGGCCAAGCCAGCCTCGCAAGAATGCTCGGTGTTT
 CGCCATTGGGACAGGGGAGTCCCCTAAGGAAAGCGCTCAGCTCTCAGGGGCTCTCCAAAAGAGAGTCTT
 AGCAGAGGCCCTGCCCGCCGAGGAGAACAAGTTGTACAGCCCTGAAAAAGATGTACAGAAAAACA
 GCCTGCAGGGCGTCCCCCGGCCACTCCTCCCTGCTGTCTACAGCTTCCCGTGAAGAGAGGCCTGC
 CTTGGATTTCAAGAGCGAGGGCTCTTCCAAAGCCTGGAGGAAGCGCACCTGGTCAAGGCCAGTTTATC
 CCGGGGACAGCCAGTGTGAGCTCCACGGGGCCACAGGAACATGGGCGTGTGAAGAACTCCAGCC
 TGAAGCACCGCGCCAGCCCTCCAGGGGCTGGAGAACGCTTGCCACCGTCAAGGAGAAAAACCGGGC
 CGGGAGCAAGAAGTGTGCTTCCAGATGACTTGATACAAATAAGAACTCAAGAAAGCCTCCTCCAAG
 GGGAGGAAGAGTGGGGCGGGCCCGAGGCTGGTGTTCGGGACAGGCCCGGGCGGGGGCCACAGGGCGG
 GGAGCAGGGCGCATGGCCACGGACGGGAGGCGGTGGTGGCCAAACCTAAGCACAAGCGAACTGACTACCG
 GCGGTGGAAGTCTCGGCCGAGATTTCTACGAAGAGGCCTGAGGAGGGCCCGGCGGGTCCGCGGGAG
 AATGTGGGGTGTACCCCGCCTGTGCCTTGCCTACGCCAGCCCTACGCCTACGTGGCTAGCGACT
 CCGAGTACTCGGCCGAGTGGAGTCCCTGTTCCACTCCACCGTGGTGGACACCAGTGAGGACGAGCAGAG
 CAATTACACCACCACTGCTTCGGGGACAGCGAGTCAAGTGTGAGCGAGGGCGAGTTCGTGGGGGAGAGC
 ACAACCACGAGCTCTGAAGAAAGCGGGGCTTAATTTGGTCCAGTTTGTCCAGACTCTGCCATTC
 AAACGGTAACGGCCCCAGACCTTACAACCACCCGCAAAAACCTTTGTCAAAATTAAGGCCTCACATAA
 CCTCAAGAAGAAGATCTCCGCTTTCGGTCTGGCTCTTTGAAACTGATGACGACGGTT

ACGCGTACGCGGCCGCTCGAG - GFP Tag - GTTTAA

Protein Sequence: >RG212564 representing NM_016651
 Red=Cloning site Green=Tags(s)

```

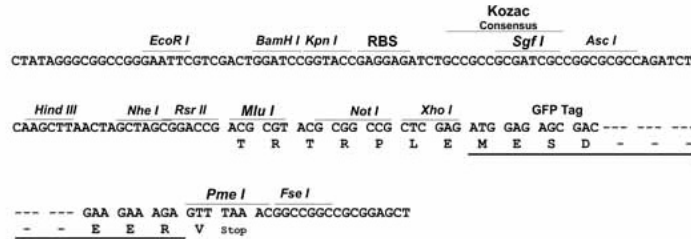
MKPSPAGTAKELEPPAPARGEQRTAEPEGRWREKGEADTERQRTREERQEATLAGLAELEYLRQRQELLVR
GALRGAGGAGAAAPRAGELLGAAQSRLEEKFLEENILLLRKQLNCLRRRDAGLLNQLQELDKQISDLR
LDVEKTSEEHLETDSRPSSGFYELSDGASGSLSNSNSVVFSECLSSCHSSTCFCSPLEATLSLSDGCPKS
ADLIGLLEYKEGHCEDQASGAVCRSLSTPQFNSLDVIADVNPKYQCDLVSKNGNDVYRYPSPHAAVAVQS
PMFLLCLTGNPLREEDRLGNHSDICGGSELDVKTDSLLPSPSSLWSASHPSSSKKMDGYILSLVQKKT
HPVRTNKPRTSVNADPTKGLLRNGSVCVRAPGGVSQGNVNLKNSKQACLPSGGIPSLNNGTFSPPKQWS
KESKAEQAESKRVPLPEGCPGAASDLQSKHLPKTAKPASQEHARCSAIGTGESPKESAQLSGASPKEP
SRGPAPPQENKVVQPLKKMSQKNSLQGVPPATPPLLSTAFPVEERPALDFKSEGSSQSLEEAHLVKAQFI
PGQQPSVRLHRGHRNMGVVKNSSLKHRGPALQGLENGLPTVREKTRAGSKKCRFPDDLDTNKKLKKASSK
GRKSGGPEAGVPGRPAGGGHRAGSRAHGREGREAVVAKPKHKRTDYRRWKSSAEISYEEALRRARRGRRE
NVGLYPAPVPLPYASPYAVVASDSEYSAECESLFHSTVVDTSSEDEQSNTNCFGDESSVSEGEFVGES
TTTSDSEESGGLIWSQFVQTLPIQTVTAPDLHNHPAKTFVKIKASHNLKKKILFRSGSLKLMTTY
  
```

TRTRPLE - GFP Tag - V

Restriction Sites: Sgfl-MluI

Cloning Scheme:

Cloning sites used for ORF Shutting:



- ACCN:** NM_016651
- ORF Size:** 2508 bp
- OTI Disclaimer:** The molecular sequence of this clone aligns with the gene accession number as a point of reference only. However, individual transcript sequences of the same gene can differ through naturally occurring variations (e.g. polymorphisms), each with its own valid existence. This clone is substantially in agreement with the reference, but a complete review of all prevailing variants is recommended prior to use. [More info](#)
- OTI Annotation:** This clone was engineered to express the complete ORF with an expression tag. Expression varies depending on the nature of the gene.
- Components:** The ORF clone is ion-exchange column purified and shipped in a 2D barcoded Matrix tube containing 10ug of transfection-ready, dried plasmid DNA (reconstitute with 100 ul of water).

Reconstitution Method:

1. Centrifuge at 5,000xg for 5min.
2. Carefully open the tube and add 100ul of sterile water to dissolve the DNA.
3. Close the tube and incubate for 10 minutes at room temperature.
4. Briefly vortex the tube and then do a quick spin (less than 5000xg) to concentrate the liquid at the bottom.
5. Store the suspended plasmid at -20°C. The DNA is stable for at least one year from date of shipping when stored at -20°C.

RefSeq: [NM_016651.6](#)

RefSeq Size: 3775 bp

RefSeq ORF: 2511 bp

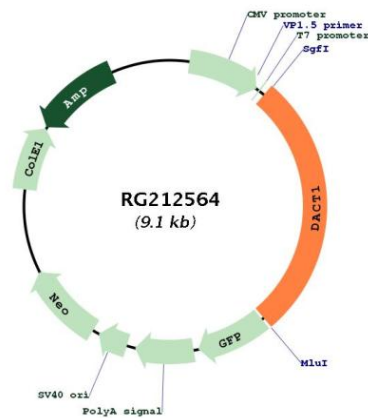
Locus ID: 51339

UniProt ID: [Q9NYF0](#)

Cytogenetics: 14q23.1

Gene Summary: The protein encoded by this gene belongs to the dapper family, characterized by the presence of PDZ-binding motif at the C-terminus. It interacts with, and positively regulates dishevelled-mediated signaling pathways during development. Depletion of this mRNA from xenopus embryos resulted in loss of notochord and head structures, and mice lacking this gene died shortly after birth from severe posterior malformations. Alternatively spliced transcript variants have been found for this gene. [provided by RefSeq, Jan 2012]

Product images:



Circular map for RG212564