

Product datasheet for **RG212543**

RBM5 (NM_005778) Human Tagged ORF Clone

Product data:

Product Type:	Expression Plasmids
Product Name:	RBM5 (NM_005778) Human Tagged ORF Clone
Tag:	TurboGFP
Symbol:	RBM5
Synonyms:	G15; H37; LUCA-15; LUCA15; RMB5
Mammalian Cell Selection:	Neomycin
Vector:	pCMV6-AC-GFP (PS100010)
E. coli Selection:	Ampicillin (100 ug/mL)



[View online »](#)

ORF Nucleotide Sequence:

>RG212543 representing NM_005778
 Red=Cloning site Blue=ORF Green=Tags(s)

TTTTGTAATACGACTCACTATAGGGCGGCCGGAATTCGTGACTGGATCCGGTACCGAGGAGATCTGCC
 GCC**CGGATCGCC**

ATGGGTT**CAGACAAA**AGAGTGAGT**AGA**ACAGAGCGT**AGT**GGAAGATACGGT**TCC**ATCATAGACAGGGATG
 ACCGTGATGAGCGTGAATCCCGAAGCAGGCGGAGGGACTCAGATTACAAAAGATCTAGT**GAT**GATCGGAG
 GGGT**GAT**AGATATGATGACTACCGAGACTATGACAGTCCAGAGAGAGCGT**GAA**AGAAGGAACAGT**GAC**
 CGATCCGAAGATGGCTACCATT**CAGAT**GGT**GACT**ATGGT**GAG**CACGACTATAGGCATGACAT**CAGT**GACG
 AGAGGGAGAGCAAGACCATCATGCTGCGCGCCTTCCCATCACCATCACAGAGAGCGATATTCGAGAAAT
 GATGGAGTCTTCGAAGGCCCTCAGCCTGCGGATGTGAGGCTGATGAAGAGGAAAACAGGTGTAAGCCGT
 GGTTTCGCCTTCGTGGAGTTTTACTCTGCAAGATGCTACCAGCTGGATGGAAGCCAATCAGAAAAAGT
 TGGTGATTCAAGGAAAGCACATTGCAATGCATTATAGCAATCCCAGACCTAAGTTTGAAGATTGGCTTTG
 TAA**CA**AGTGCCTTAA**CA**ATTT**CAG**AAAAGACTAAAATGCTTCCGATGTGGAGCAGACAAGTTTGAC
 TCTGAACAGGAAGTGCCTCCTGGAACCACAGAGTCGGTTCAGTCTGTGGATTACTACTGTGATACGATCA
 TTCTTCGGAACATAGCTCCGCACACTGTGGTGGATTCCATCATGACAGCACTGTCTCCTTACGCGTCTTT
 AGCTGTCAATAACATCCGCCTCATAAAAGACAAACAGACCCAGCAGAACAGAGGCTTCGCATTTGTGCGAG
 CTGTCTCTGCAATGGATGCTTCTCAGCTGCTT**CAG**ATATTACAGAGTCTCCATCCTCCTTTGAAAAATTG
 ATGGCAAAACTATTGGGGTTGATTTTGCAAAAAGTGCCAGAAAAGACTTGGTCTCTCAGATGGTAAACC
 CGTCAGCGCCTTCTCTGTAGCTAGTACGGCTATTGCTGCTGCTCAGTGGT**CAT**CCACCCAGTCTCAAAGT
 GGTGAAGGAGGCAGTGTGACTACAGTTATCTGCAACCAGTCAAGATGGCTATGCCAAATATGCTCAGT
 ATTCACAGGATTATCAGCAGTTTTATCAACAACAAGCTGGAGGATTGGAATCTGATGCATCATCTGCATC
 AGGCACAGCAGTGACCACACCTCAGCGCTGTAGTGTCCAGAGTCTCAGCTGTATAATCAAACCTCC
 AATCCACCTGGCTCTCCGACTGAGGAAGCACAGCCTAGCACTAGCACAAGTACACAGGCCCCAGCGCCTT
 CCCCTACTGGTGTAGTTCCTGGTACCAATATGCAGTACCTGACACGTCCACTTACCAGTATGATGAATC
 TTCAGGATATTACTATGATCCGACAACAGGGCTCTATTATGACCCCAACTCGCAATACTACTATAATTCC
 TTGACCCAGCAGTACCTTACTGGGATGGGGAAAAGAGACCTACGTGCCAGCTGCAGAGTCTAGCTCCC
 ACCAGCAGTCGGGCTGCCTCCTGCAAAAAGAGGGGAAAGAGAAGAAGGAGAAACCAAGAGCAAAACAGC
 CCAGCAGATTGCCAAAGACATGGAACGCTGGGCTAAGAGTTTGAATAAGCAGAAAGAAAACCTTAAAAAT
 AGCTTTCAGCCTGTCAATTCCTTGAGGGAAGAAGAAAGGAGAGAAATCTGCTGCAGCAGACGCTGGCTTTG
 CTCTCTTTGAGAAGAAGGAGCCTTAGCTGAAAGGCAGCAGCTCATCCAGAAATGGTGGCAATGGAGA
 TGAGGAGAATCCCTCAAAGGGGTCTGGTTGCTGCTTACAGTGGT**GAC**AGT**GAC**AAATGAGGAGGAGCTG
 GTGGAGAGACTTGAGAGT**GAG**GAAGAGAAGCTAGCTGACTGGAAGAAGATGGCCTGTCTGCTCTGCCGGC
 GCCAGTTC**CCG**AA**CAA**AGATGCCCTAGTCAGGCACCAGCAACTCTCAGACCTTCA**CA**AGCAAAACATGGA
 CATCTACCGACGATCCAGGCTGAGCGAGCAGGAGCTGGAAGCCTTGGAGCTAAGGGAGAGAGAGATGAAA
 TACCGAGACCGAGCTGCAGAAAGACGGGAGAAGTACGGCATTCCAGAACCTCCAGAGCCCAAGCGCAAGA
 AGCAGTTT**GAT**GCCGGCACTGTGAATTACGAGCAACCCACCAAAGATGGCATTGACCACAGTAACATTGG
 CAACAAGATGCTGCAGGCCATGGGCTGGCGGGAAGGCTCTGGCTTGGGACGAAAGTGTCAAGGCATTACG
 GCTCCCATTGAGGCTCAAGTTCGGCTAAAGGGAGCTGGCCTAGGAGCCAAAGGCAGCGCATATGGTTTGT
 CGGGCGCCGATTCTACAAAGATGCTGTCCGAAAGCCATGTTTGCCCGTTCACTGAGATGGAG

AG**CGG**ACCGACGCGTACGCGGCCGCTCGAG - GFP Tag - GTTTAA

Protein Sequence: >RG212543 representing NM_005778
 Red=Cloning site Green=Tags(s)

```

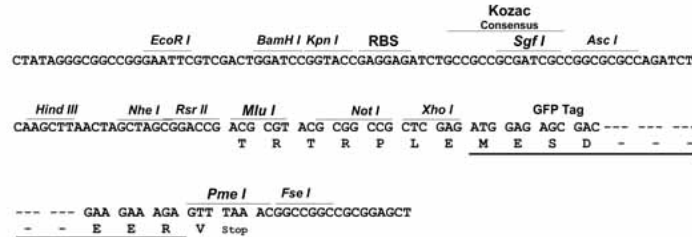
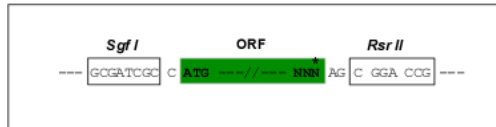
MGSDKRVSRTERSGRYGSIIIDRRDRERESRSRRRSDYKRSSDDRRGDRYDDYRDYDSPERERERRNSD
RSEdGYHSDGDYGEHDYRHDISDERESKTI MLRGLPITITESDIEMMESFEGPQPADVRLMKRKTGVSR
GFAFVEFYHLQDATSWMEANQKLVIQGKHIAMHYSNRPKFDWLCNKCLNNFRKRLKCFRCGADKFD
SEQEVPPGTTESVQSVDYYCDTIILRNIAPHTVVDSIMTALSPYASLAVNNIRLIKDKQTQQRGFAFVQ
LSSAMDASQLLQILQSLHPPLKIDGKTIGVDFAKSARKDLVLSGDNRVSAFSVASTAIAAAQWSSTQSQS
GEGGSVDYSYLQPGQDGYAQYAQYSQDYQQFYQQAGGLESDASSASGTAVTTTSAAVVSQSPQLYNQTS
NPPGSPTEEAQPSTSTSTQAPAA SPTGVVPGTKYAVPDTSTYQYDESSGYYDPTTGLYYDPNSQYYYNS
LTQQYLYWDGEKETYVPAAE SSSHQQSGLPPAKEGKEKKEKPKSKTAQQIAKDMERWAKSLNKQKENFKN
SFQPVNSLREEERRE SAAADAGFALFEKKGALAERQQLIPELVRNGDEENPLKRGLVAAYS GDS DNEEEL
VERLESEEEKLADWKKMACLLCRRQFPNKDALVRHQQLSDLHKQNMDIYRRSRLSEQELEALELREREMK
YRDRAAERREKYIPEPPEPKRKKQFDAGTVNYEQPTKDGIDHSNIGNKMLQAMGWREGSGLGRKCQGIT
APIEAQVRLKGAGLGAKGSAYGLSGADSYKDAVRKAMFARFTEME
  
```

SGPTRRRLE - GFP Tag - V

Restriction Sites: Sgfl-RsrII

Cloning Scheme:

Cloning sites used for ORF Shuttling:


ACCN: NM_005778

ORF Size: 2445 bp

OTI Disclaimer: The molecular sequence of this clone aligns with the gene accession number as a point of reference only. However, individual transcript sequences of the same gene can differ through naturally occurring variations (e.g. polymorphisms), each with its own valid existence. This clone is substantially in agreement with the reference, but a complete review of all prevailing variants is recommended prior to use. [More info](#)
OTI Annotation: This clone was engineered to express the complete ORF with an expression tag. Expression varies depending on the nature of the gene.

Components: The ORF clone is ion-exchange column purified and shipped in a 2D barcoded Matrix tube containing 10ug of transfection-ready, dried plasmid DNA (reconstitute with 100 ul of water).

Reconstitution Method:

1. Centrifuge at 5,000xg for 5min.
2. Carefully open the tube and add 100ul of sterile water to dissolve the DNA.
3. Close the tube and incubate for 10 minutes at room temperature.
4. Briefly vortex the tube and then do a quick spin (less than 5000xg) to concentrate the liquid at the bottom.
5. Store the suspended plasmid at -20°C. The DNA is stable for at least one year from date of shipping when stored at -20°C.

RefSeq: [NM_005778.1](#), [NP_005769.1](#)

RefSeq Size: 3135 bp

RefSeq ORF: 2448 bp

Locus ID: 10181

UniProt ID: [P52756](#)

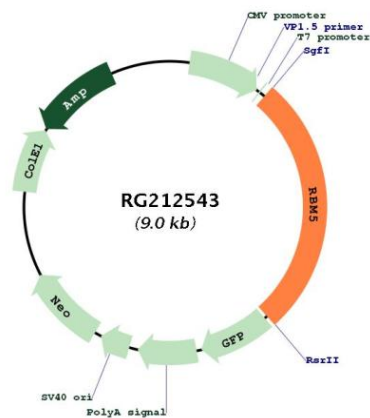
Cytogenetics: 3p21.31

Domains: G-patch, RRM, zf-RanBP, zf-C2H2

Protein Families: Druggable Genome

Gene Summary: This gene is a candidate tumor suppressor gene which encodes a nuclear RNA binding protein that is a component of the spliceosome A complex. The encoded protein plays a role in the induction of cell cycle arrest and apoptosis through pre-mRNA splicing of multiple target genes including the tumor suppressor protein p53. This gene is located within the tumor suppressor region 3p21.3, and may play a role in the inhibition of tumor transformation and progression of several malignancies including lung cancer. [provided by RefSeq, Oct 2011]

Product images:



Circular map for RG212543