

Product datasheet for **RG212542**

ST7L (NM_017744) Human Tagged ORF Clone

Product data:

Product Type:	Expression Plasmids
Product Name:	ST7L (NM_017744) Human Tagged ORF Clone
Tag:	TurboGFP
Symbol:	ST7L
Synonyms:	FAM4B; ST7R; STLR
Mammalian Cell Selection:	Neomycin
Vector:	pCMV6-AC-GFP (PS100010)
E. coli Selection:	Ampicillin (100 ug/mL)



[View online »](#)

ORF Nucleotide Sequence:

>RG212542 representing NM_017744
 Red=Cloning site Blue=ORF Green=Tags(s)

TTTTGTAATACGACTCACTATAGGGCGGCCGGAATTCGTCGACTGGATCCGGTACCGAGGAGATCTGCC
 GCC**CGCATCGCC**

ATGGCGGACCGTGGCGGCGTGGGTGAAGCCGACGCTGTTGGAGCGTCTCCTGCATCTGTCCCTGGCCTAA
 ACCCGACGCTAGGCTGGAGGGAGCGACTGCGGGCCGGCTGGCGGGGACTGGGGCCCTCGTTGTGGTTCGT
 GGCGGGGCTGGGCTGCTTTACGCCCTGAGGATCCCTTTGAGGCTGTGTGAGAATTTGGCAGCGGTGACT
 GTATTTTTAAATTCATTGACACCCAAATTCATGTGGCACTTACAGGGACCTCTTCATTGATATCAGGAC
 TAATATTTATATTTGAATGGTGGTACTTCCATAAGCATGGCACATCTTTTATTGAGCAAGTATCTGTAAG
 CCATTTGCAACCACTGATGGGAGGAACAGAGAGCAGCATTTTCAAAGCAGGTTCTCCTTCGAGGAACAGA
 GAAAATGAAACCAGCAGACAGAATTTGTCAGAATGTAAGGTATGGAGAAACCTCTAAATCTTTTCAGAG
 GAGCAGAATATAGGAGATACACTTGGGTGACTGGTAAAGAGCCACTTACATACTATGACATGAACCTGTC
 AGCTCAGGACCATCAGACCTTTTTACCTGTGACACAGATTTTTACGTCCTTCAGACACAGTTATGCAG
 AAGGCTTGGAGGGAAAGAAATCCTCCAGCTCGAATCAAAGCAGCCTATCAAGCTTTAGAATTAACAATG
 ACTGTGCCACTGCATATGTTCTACTGGTGGAGGAAGAAGCAACAATATTGTAGATGCTGAAAGGTTATT
 TAAACAGGCACTCAAGGCAGGAGAAACAATTTATAGGCAGTCACAGCAGTGCCAGCACCAAAGTCCCTCAG
 CATGAAGCTCAACTGAGGAGAGATACCAATGACTGGTATATATTAAGAAGATTGGCAATGTGTGCAA
 GAAAATTAGGAAGAATAAGAGAAGCAGTAAAAATAAGAGAGATTTGATGAAAGAATTTCTCCTCTTAC
 CATGTTGAACATCCATGAAAATCTTTAGAATCACTTTTAGAATTACAGGCCTATCCAGATGTTCCAGGCA
 GTCCTAGCAAAAATATGATGATATAAGCCTTCCAAAGTCAGCAGCAATCTGTTACACAGCAGCACTGTTGA
 AGACAAGGACTGTTTCAGAAAAATCTCTCCAGAAACAGCCTCCAGAAGAGGATTAAGCACAGCAGAAAT
 TAATGCCGTGGAAGCAATTCATAGAGCTGTGGAATTTAATCCTCATGTTCCAAAAATTTTATTAGAGATG
 AAAAGTTTAAATTTACCTCCAGAACACATTCTGAAACGGGGTGATAGTGAAGCAATTGCCTATGCTTTCT
 TTCATCTTCAGCACTGGAACGAATAGAAGGTGCTCTTAATCTGTTACAGTGTACATGGGAAGGCACTTT
 TAGAATGATTCCATACCCGTTAGAGAAAGGACATCTATTTACCCTATCCAGCTGCACAGAGACGGCT
 GATAGAGAGCTATTACCTACCTTTCATCATGTTTCTGTTACCCAAAAAAGGAGCTTCTTTGTTTCATCC
 ATTTACAGCAGGATTTGCTCTTACAGCAATGATAGCCATTCTCACTACCAGTTTCTGAAATCAT
 GGGTATTTTTGCTAAAGCTGTGCTGGGACTCTGGTGCCCCAACCCCTGGGCATCCTCAGGCTTTGAGGAG
 AATACACAGGATTTGAAGTCAGAAGACCTAGGTTTGAGTCTGGC

ACGCGTACGCGGCCGCTCGAG – GFP Tag – GTTTAA

Protein Sequence:

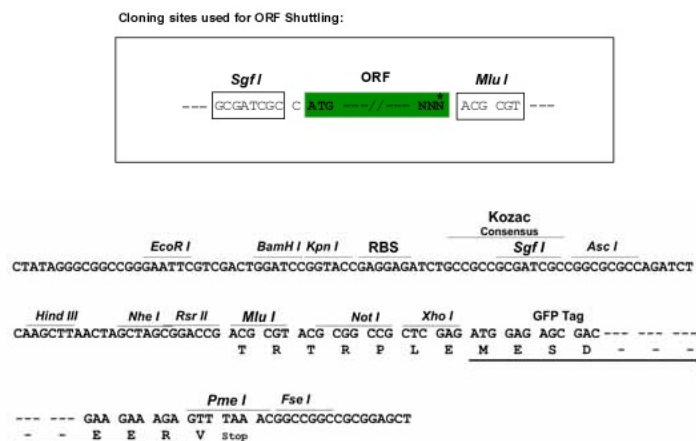
>RG212542 representing NM_017744
 Red=Cloning site Green=Tags(s)

MADRGGVGEAAAVGASPVPLNPTLGWRERLRAGLAGTASLWFVAGLGLLYALRIPLRLCENLAAVT
 VFLNSLTPKFYVALTGTSSLISGLIFIFEWYFHKHGTSFIEQVSVSHLQPLMGGTESSISEPGSPSRNR
 ENETSQNLSECKVWRNPLNFRGAEYRRYTWTGKEPLTYDMNLSAQDHQTFFTCDTDFLRPSDTVMQ
 KAWRERNPPARIKAAAYQALELNNDCAAYVLLAEEEEATTIVDAERLFKQALKAGETIYRQSQQCQHSPQ
 HEAQLRRDNTLVYIKRRLAMCARLGRIREAVKIMRDLMEFPPLTMLNIHENLLESLELQAYPDVQA
 VLAKYDDISLPKSAICYAALLKTRTVSEKFSPETASRRGLSTAEINAVEAIHRAVEFNPHVPKYLLEM
 KSLILPPEHILKRGDSEIAYAFFHLQHWKRIEGALNLLQCTWEGTFRMIPYPLEKHLFYYPYPSCTETA
 DRELLPTFHHVSYPKELPLFIHFTAGFCSSSTAMIAILTHQFPEIMGIFAKAVLGLWCPQPWASSGFEE
 NTQDLKSEDLGLSSG

TRTRPLE – GFP Tag – V

Restriction Sites:

SgfI-MluI

Cloning Scheme:


ACCN: NM_017744

ORF Size: 1725 bp

OTI Disclaimer: The molecular sequence of this clone aligns with the gene accession number as a point of reference only. However, individual transcript sequences of the same gene can differ through naturally occurring variations (e.g. polymorphisms), each with its own valid existence. This clone is substantially in agreement with the reference, but a complete review of all prevailing variants is recommended prior to use. [More info](#)

OTI Annotation: This clone was engineered to express the complete ORF with an expression tag. Expression varies depending on the nature of the gene.

Components: The ORF clone is ion-exchange column purified and shipped in a 2D barcoded Matrix tube containing 10ug of transfection-ready, dried plasmid DNA (reconstitute with 100 ul of water).

Reconstitution Method:

1. Centrifuge at 5,000xg for 5min.
2. Carefully open the tube and add 100ul of sterile water to dissolve the DNA.
3. Close the tube and incubate for 10 minutes at room temperature.
4. Briefly vortex the tube and then do a quick spin (less than 5000xg) to concentrate the liquid at the bottom.
5. Store the suspended plasmid at -20°C. The DNA is stable for at least one year from date of shipping when stored at -20°C.

RefSeq: [NM_017744.5](#)

RefSeq Size: 4552 bp

RefSeq ORF: 1728 bp

Locus ID: 54879

UniProt ID: [Q8TDW4](#)

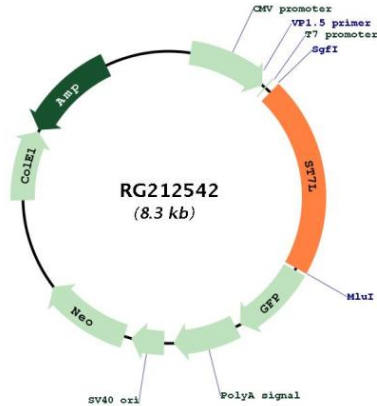
Cytogenetics: 1p13.2

Domains: ST7

Protein Families: Transmembrane

Gene Summary: This gene was identified by its similarity to the ST7 tumor suppressor gene found in the chromosome 7q31 region. This gene is clustered in a tail-to-tail manner with the WNT2B gene in a chromosomal region known to be deleted and rearranged in a variety of cancers. Several transcript variants encoding many different isoforms have been described, but some have not been fully characterized. [provided by RefSeq, Feb 2011]

Product images:



Circular map for RG212542