

Product datasheet for **RG212538**

BMP1 (NM_001199) Human Tagged ORF Clone

Product data:

Product Type:	Expression Plasmids
Product Name:	BMP1 (NM_001199) Human Tagged ORF Clone
Tag:	TurboGFP
Symbol:	BMP1
Synonyms:	OI13; PCOLC; PCP; PCP2; TLD
Mammalian Cell Selection:	Neomycin
Vector:	pCMV6-AC-GFP (PS100010)
E. coli Selection:	Ampicillin (100 ug/mL)



[View online »](#)

ORF Nucleotide Sequence:

>RG212538 representing NM_001199
 Red=Cloning site Blue=ORF Green=Tags(s)

TTTTGTAATACGACTCACTATAGGGCGGCCGGGAATTCGTCGACTGGATCCGGTACCGAGGAGATCTGCC
 GCC**CGGATCGCC**

ATGCCCGCGTGGCCCGCTGCCGTGCTGCTCGGGCTGCTGCTCCCAGCTCCCGGCCGGCCGCTGG
 ACTTGGCCGACTACACCTATGACCTGGCGGAGGAGGACGACTCGGAGCCCTCAACTACAAAGACCCCTG
 CAAGGCGGCTGCCTTTCTGGGGACATTGCCCTGGACGAAGAGGACCTGAGGGCCTTCCAGGTACAGCAG
 GCTGTGGATCTCAGACGGCACACAGCTCGTAAGTCTCCATCAAAGCTGCAGTTCAGGAAACACTTCTA
 CCCCCAGCTGCCAGAGCACCAACGGGCAGCCTCAGAGGGGAGCCTGTGGGAGATGGAGAGGTAGATCCCG
 TAGCCGGCGGGCGGACGTCGCCAGCAGAGCGTGTGGCCGATGGGGTATCCCTTTGTCTATTGGG
 GAAACTTCACTGGTAGCCAGAGGGCAGTCTCCGGCAGGCCATGAGGCACTGGGAGAAGCACACCTGTG
 TCACCTTCTGGAGCGCACTGACGAGGACAGCTATATTGTGTTACCTATCGACCTTGGGGTGTGCTC
 CTACGTGGGTGCGCGCGGGGGCCCCAGGCCATCTCCATCGCAAGAACTGTGACAAGTTCCGGCATT
 GTGGTCCACGAGCTGGGCCACGTCGTGCGCTTCTGGCAGCAACACTCGGCCAGACCGGGACCGCCACG
 TTTCCATCGTTTCGTGAGAACATCCAGCCAGGGCAGGAGTAACTTCTGAAGATGGAGCCTCAGGAGGT
 GGAGTCCCTGGGGGAGACCTATGACTTCGACAGCATCATGCAATTACGCTCGGAACACATTCTCCAGGGGC
 ATCTTCTGGATACCAATTGTCCCAAGTATGAGGTGAACGGGGTAAACCTCCCATTGGCCAAAGGACAC
 GGCTCAGCAAGGGGGACATTGCCAAGCCCGCAAGCTTACAAGTGCCAGCCTGTGGAGAGACCCTGCA
 AGACAGCACAGGCAACTTCTCTCCCTGAATACCCCAATGGCTACTCTGCTCACATGCACTGCGTGTGG
 CGCATCTCTGCACACCCGGGGAGAAGATCATCTGAACCTCACGTCCCTGGACCTGTACCGCAGCCGCC
 TGTGCTGGTACGACTATGTGGAGTCCGAGATGGCTTCTGGAGGAAGGCGCCCTCCGAGGCCGCTTCTG
 CGGGTCCAAACTCCCTGAGCCTATCGTCTCCACTGACAGCCGCCTCTGGGTGAATTCCGCAGCAGCAGC
 AATTGGGTTGAAAGGGCTTCTTTGCACTACGAAGCCATCTGCGGGGGTATGTGAAAAAGGACTATG
 GCCACATTCAATCGCCAACTACCCAGACGATTACCGGCCAGCAAAGTCTGCATCTGGCGGATCCAGGT
 GTCTGAGGGCTTCCACGTGGCCTCACATTCCAGTCTTTGAGATTGAGCGCCACGACAGCTGTGCCTAC
 GACTATCTGGAGGTGCGCGACGGGCACAGTGAGAGCAGCACCCCTCATCGGGCGCTACTGTGGCTATGAGA
 AGCCTGATGACATCAAGAGCACGTCCAGCCGCTCTGGCTCAAGTTCGTCTCTGACGGGTCCATTAACAA
 AGCGGGCTTTGCCGCAACTTTTTCAAAGAGGTGGACGAGTGTCTCGGCCAACCGGGGGCTGTGAG
 CAGCGGTGCCTCAACACCCTGGCAGCTACAAGTGCAGCTGTGACCCGGGTACGAGCTGGCCCCAGACA
 AGCGCCGCTGTGAGGCTGCCTGTGGCGGATTCTCACCAGCTCAACGGCTCCATCACCAGCCCGGGCTG
 GCCAAGGAGTACCCCCCAACAAGAACTGCATCTGGCAGCTGGTGGCCCCACCAGTACCGCATCTCC
 CTGCACTTTGACTTCTTTGAGACAGAGGGCAATGATGTGTGCAAGTACGACTTCGTGGAGGTGCGCAGTG
 GACTCACAGCTGACTCCAAGCTGCATGGCAAGTTCTGTGGTTCTGAGAAGCCCGAGGTATCACCTCCCA
 GTACAACAATGCGCGTGGAGTTCAAGTCCGACAACACCGTGTCCAAAAAGGGCTTCAAGGCCACTTC
 TTCTCAGAAAAGAGGCCAGCTCTGCAGCCCCCTCGGGGACGCCCCACCAGCTCAAATCCGAGTGCAGA
 AAAGAAACCGGACCCCCAG

ACGCGTACGCGGCCGCTCGAG – GFP Tag – GTTTAA

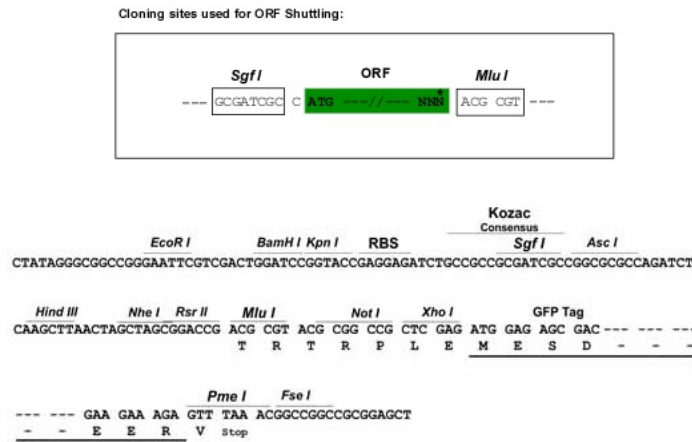
Protein Sequence: >RG212538 representing NM_001199
 Red=Cloning site Green=Tags(s)

MPGVARLPLLLGLLLLPRPGRPLDLADYTYDLAEEDDSEPLNYKDPCKAAAF LGDIALDEEDLRAFQVQQ
 AVDLRRHTARKSSIKAAPVGNSTSPSCQSTNGQPQRGACGRWRGRSRSRRAATSRPERVWPDGVIPFVIG
 GNFTGSQRAVFRQAMRHWEKHCTVFLERTDEDSYIVFTYRPGCCSYVGRGGGQQAISIGKNCDFGI
 VVHELGHVVGFWEHTRPDRDRHVSIVRENIQPGQEYNFLKMEPQEVESLGETYDFDSIMHYARNTFSRG
 IFLDTIIVPKYEVNGVKPPIGQRTRLSKGDIAQARKLYKCPACGETLQDSTGNFSSPEYPNGYSAHMHCVW
 RISVTPGEKIILNFTSLDLYRSRLCWYDYVEVRDGFWRKAPLRGRFCGSKLPEPIVSTDSRLWVEFRSS
 NWWGKGFVAVYEAICGGDVKKDYGHIQSPNYPDDYRPSKVICIWRIQVSEGFHVGLTFQSFEIERHDS
 CAYDYLEVRDGHSESSTLIGRYCYEKPDDIKSTSSRLWLKVFSDGSINKAGFAVNFKEVDECSRPNRGGCE
 QRCLNTLGSYKCSCDPGYELAPDKRCEAACGGFLTKLNGSITSPGWPKEYPPNKNCIWQLVAPTQYRIS
 LQFDFFETEGNDVCKYDFVEVRSGLTADSKLHGKFCGSEKPEVITSQYNNMRVEFKSDNTVSKKGFKAHF
 FSEKRPALQPPRGRPHQLKFRVQKRNRTPQ

TRTRPLE - GFP Tag - V

Restriction Sites: SgfI-MluI

Cloning Scheme:



ACCN: NM_001199

ORF Size: 2190 bp

OTI Disclaimer: Due to the inherent nature of this plasmid, standard methods to replicate additional amounts of DNA in E. coli are highly likely to result in mutations and/or rearrangements. Therefore, OriGene does not guarantee the capability to replicate this plasmid DNA. Additional amounts of DNA can be purchased from OriGene with batch-specific, full-sequence verification at a reduced cost. Please contact our customer care team at custsupport@origene.com or by calling 301.340.3188 option 3 for pricing and delivery.

The molecular sequence of this clone aligns with the gene accession number as a point of reference only. However, individual transcript sequences of the same gene can differ through naturally occurring variations (e.g. polymorphisms), each with its own valid existence. This clone is substantially in agreement with the reference, but a complete review of all prevailing variants is recommended prior to use. [More info](#)

OTI Annotation: This clone was engineered to express the complete ORF with an expression tag. Expression varies depending on the nature of the gene.

Components: The ORF clone is ion-exchange column purified and shipped in a 2D barcoded Matrix tube containing 10ug of transfection-ready, dried plasmid DNA (reconstitute with 100 ul of water).

Reconstitution Method:

1. Centrifuge at 5,000xg for 5min.
2. Carefully open the tube and add 100ul of sterile water to dissolve the DNA.
3. Close the tube and incubate for 10 minutes at room temperature.
4. Briefly vortex the tube and then do a quick spin (less than 5000xg) to concentrate the liquid at the bottom.
5. Store the suspended plasmid at -20°C. The DNA is stable for at least one year from date of shipping when stored at -20°C.

RefSeq: [NM_001199.4](#)

RefSeq Size: 2487 bp

RefSeq ORF: 2193 bp

Locus ID: 649

UniProt ID: [P13497](#)

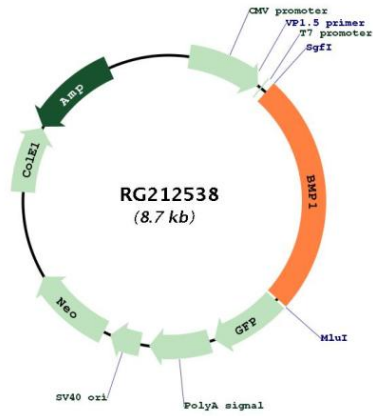
Cytogenetics: 8p21.3

Domains: CUB, Astacin, EGF_CA, ZnMc, EGF, EGF

Protein Families: Druggable Genome, Protease

Gene Summary: This gene encodes a protein that is capable of inducing formation of cartilage in vivo. Although other bone morphogenetic proteins are members of the TGF-beta superfamily, this gene encodes a protein that is not closely related to other known growth factors. This gene is expressed as alternatively spliced variants that share an N-terminal protease domain but differ in their C-terminal region. [provided by RefSeq, Aug 2008]

Product images:



Circular map for RG212538