

Product datasheet for **RG212536**

CHRNA (NM_005199) Human Tagged ORF Clone

Product data:

Product Type:	Expression Plasmids
Product Name:	CHRNA (NM_005199) Human Tagged ORF Clone
Tag:	TurboGFP
Symbol:	CHRNA
Synonyms:	ACHRG
Mammalian Cell Selection:	Neomycin
Vector:	pCMV6-AC-GFP (PS100010)
E. coli Selection:	Ampicillin (100 ug/mL)



[View online »](#)

ORF Nucleotide Sequence:

>RG212536 representing NM_005199
 Red=Cloning site Blue=ORF Green=Tags(s)

TTTTGTAATACGACTCACTATAGGGCGGCCGGGAATTCGTCGACTGGATCCGGTACCGAGGAGATCTGCC
 GCC**CGATCGCC**

ATGCATGGGGGCCAGGGCCGCTGCTCCTCTGCTGCTGCTGGTGTCTGCCTGGGGGCCAGGGCCGGA
 ACCAGGAGGAGCGCTGCTCGCAGACCTGATGCAAACTACGACCCCAACCTGCGCCCGCGGAACGAGA
 CTCGGATGTGGTCAATGTGAGCCTGAAGCTAACCTCACCAACCTCATCTCCCTGAACGAGCGAGAGAA
 GCCCTCACCAATGTCTGGATAGAGATGCAGTGGTGGACTATCGCCTGCGCTGGGATCCGCGAGACT
 ACGAAGGCTGTGGGTGCTGAGGGTCCCATGGTGTGGCGCCGATATCGTGTGGAGAACAA
 CGTGGACGGTGTCTCGAGGTGGCCCTACTGCAATGTCTGCTGCTCCCTGACGGTGTATCTACTGG
 CTGCCGCTGCCATCTCCGTTCCGCTGCTCTATCTCAGTCACCTACTCCCCTTCGACTGGCAGAACT
 GCTCCCTATCTCCAGTCCAGACTTACAGACCAATGAGATTGATCTGCAGCTGAGTCAGGAAGATGG
 CCAGACCATCGAGTGGATTTTCATTGACCTGAGGCCTTACAGAGAATGGGGAGTGGCCATCCAGCAC
 CGACCAGCAAGATGCTCCTGGACCCAGCGGCCAGCCAGGAAGCAGGCCACCAAGGTGGTGTCT
 ACCTGCTCATCCAGCGCAAGCCCCTCTTACGTCAACATCATCGCCCCCTGTGTGCTCATCTCCTC
 TGTCCCATCCTCATCCACTTCCCTTCTGCAAGGCTGGGGGCCAGAAGTGTACCCTGCGCATCAACGTG
 CTCCTGGCCAGACTGTCTTCTCTTCTTGTGGCCAAGAAGGTGCCTGAAACCTCCCAGGCGGTGCCAC
 TCATCAGCAAGTACCTGACCTTCTCTGGTGGTACCATCCTCATTGTCGTGAATGCTGTGTTGTGCT
 CAATGTCTCCTTGGGTCTCCACACACACTCCATGGCCGAGGGGTCCGCAAGGTGTTCTGAGGCTC
 TTGCCAGCTGCTGAGGATGCAGTTCGCCGCTGGCCCGCAGCTGTGCAGGACACCCAGTCCCGGC
 TACAGAATGGCTCCTCGGGATGGTGCATCAACTGGGAGGAGGTGGCCCTGCTCCTCGCATCGCAGT
 ACTCCTCTCCAGCAGTGGCAGCGCAAGGGCTGGTGGCGCAGCGCTGGAGAAGCTAGAGAAAGGCCCG
 GAGTTAGGGCTGAGCCAGTCTGTGGCAGCCTGAAGCAGGCTGCCCCAGCCATCCAGGCCTGTGTGAAG
 CCTGCAACCTCATTGCCTGTGCCCGCACAGCAGAGTCACTTTGACAATGGGAATGAGGAGTGGTCTC
 GGTGGGCCGAGTGTGGACCGCTGTCTTCTGGCCATGCTCTCGCTCTTATCTGTGGCACAGCTGGC
 ATCTTCTCATGGCCACTACAACCGGGTGGCCGCTGCCATTCCCTGGAGATCCACGCCCTACCTGC
 CCTCACAGAC

ACGCGTACGCGGCCGCTCGAG – GFP Tag – GTTTAA

Protein Sequence:

>RG212536 representing NM_005199
 Red=Cloning site Green=Tags(s)

MHGGQGPLLLLLLAVCLGAQGRNQEERLLADLMQNYDPNLRPAERDSVVNVSLKLTNLISLNEREE
 ALTTNVWIEMQCDYRLRWDPRDYGLWVLRVPTMVRPDI VLENNVDGVFEVALYCNVLVSPDGIYW
 LPPAIFRSACSI SVTYFPFDWQNC SLIFQSQTSTNEIDLQLSQEDGQTEWIFIDPEAFTENGWAIQH
 RPAKMLLDPAAPAQEAHQKVVFYLLIQRKPLFYVINIIAPCVLISSVAILIHFLPAKAGGQKCTVAINV
 LLAQTVFLFLVAKKVPETSQAVPLISKYLTFLLVVTILIVVNNAVVLNVSLRSPHSMARGVRKVFRLR
 LPQLLRMHVRPLAPA AVQDTQSRLQNGSSGWSITTGEEVALCLPRSELLFQQWQRQGLVAAALEKLEKGP
 ELGLSQFCGSLKQAAPAIQACVEACNL IACARHQQSHFDNGNEEWFVGRVLDRCVFLAMLSLFCGTAG
 IFLMAHYNRVPALPFPGDPRPYLPSPD

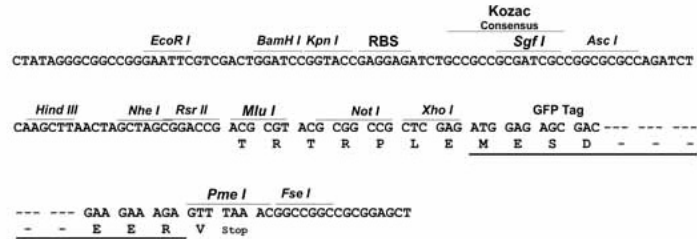
TRTRPLE – GFP Tag – V

Restriction Sites:

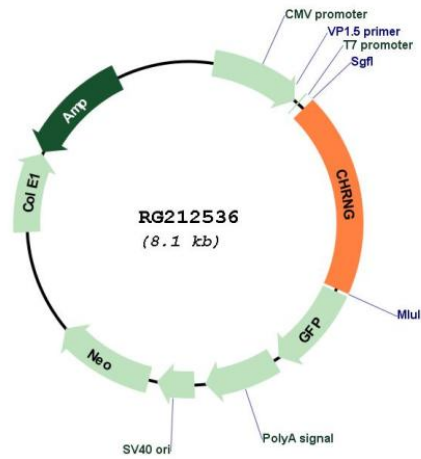
Sgfl-MluI

Cloning Scheme:

Cloning sites used for ORF Shutting:



Plasmid Map:



ACCN:	NM_005199
ORF Size:	1551 bp
OTI Disclaimer:	The molecular sequence of this clone aligns with the gene accession number as a point of reference only. However, individual transcript sequences of the same gene can differ through naturally occurring variations (e.g. polymorphisms), each with its own valid existence. This clone is substantially in agreement with the reference, but a complete review of all prevailing variants is recommended prior to use. More info
OTI Annotation:	This clone was engineered to express the complete ORF with an expression tag. Expression varies depending on the nature of the gene.
Components:	The ORF clone is ion-exchange column purified and shipped in a 2D barcoded Matrix tube containing 10ug of transfection-ready, dried plasmid DNA (reconstitute with 100 ul of water).
Reconstitution Method:	<ol style="list-style-type: none">1. Centrifuge at 5,000xg for 5min.2. Carefully open the tube and add 100ul of sterile water to dissolve the DNA.3. Close the tube and incubate for 10 minutes at room temperature.4. Briefly vortex the tube and then do a quick spin (less than 5000xg) to concentrate the liquid at the bottom.5. Store the suspended plasmid at -20°C. The DNA is stable for at least one year from date of shipping when stored at -20°C.
RefSeq:	NM_005199.5
RefSeq Size:	2187 bp
RefSeq ORF:	1554 bp
Locus ID:	1146
UniProt ID:	P07510
Cytogenetics:	2q37.1
Protein Families:	Druggable Genome, Ion Channels: Cys-loop Receptors, Transmembrane
Gene Summary:	The mammalian muscle-type acetylcholine receptor is a transmembrane pentameric glycoprotein with two alpha subunits, one beta, one delta, and one epsilon (in adult skeletal muscle) or gamma (in fetal and denervated muscle) subunit. This gene, which encodes the gamma subunit, is expressed prior to the thirty-third week of gestation in humans. The gamma subunit of the acetylcholine receptor plays a role in neuromuscular organogenesis and ligand binding and disruption of gamma subunit expression prevents the correct localization of the receptor in cell membranes. Mutations in this gene cause Escobar syndrome and a lethal form of multiple pterygium syndrome. Muscle-type acetylcholine receptor is the major antigen in the autoimmune disease myasthenia gravis.[provided by RefSeq, Sep 2009]