

Product datasheet for **RG212535**

Zfp219 (ZNF219) (NM_001102454) Human Tagged ORF Clone

Product data:

Product Type:	Expression Plasmids
Product Name:	Zfp219 (ZNF219) (NM_001102454) Human Tagged ORF Clone
Tag:	TurboGFP
Symbol:	ZNF219
Synonyms:	ZFP219
Mammalian Cell Selection:	Neomycin
Vector:	pCMV6-AC-GFP (PS100010)
E. coli Selection:	Ampicillin (100 ug/mL)



[View online »](#)

**ORF Nucleotide
Sequence:**

>RG212535 representing NM_001102454
 Red=Cloning site Blue=ORF Green=Tags(s)

TTTTGTAATACGACTCACTATAGGGCGGCCGGAATTCGTCGACTGGATCCGGTACCGAGGAGATCTGCC
 GCC**CGATCGCC**

ATGGAGGGCTCAGTCCCGCGCCCGAGCGGCCACTTAGCGCCGTCGCCCGGCTTTCGACGGCGAGC
 TGGATCTGCAGCGATACTCCAACGGGCCAGCCGTGAGCGCAGGGTCGCTCGGGATGGGAGCGGTGAGCTG
 GTCTGAGAGTCGTGCAGGCGAACGGCGCTTCCCTGCCCTGTATGCGGGAAGCGCTTCCGCTTCAACTCT
 ATCCTTGTCTTGCACCTGCGGGCGCACCCAGGAGCCAGGCCCTCCAGTGCCCTCACTGCGGCCACCGCG
 CGGCGCAGCGGGCTCTGCTGCGCTCGCACCTGCGCACACACCAGCCGAGCGCCACGTAGTCTGCTGC
 ACGCTGTTGCTGGAGTTGGAAGAGCGCGCTACTACGCGAGGCCCGACTGGGGAGAGCCGAAGCTCA
 GGGGGCATGCAGGCCACCCCTGCCACTGAGGGTCTGGCGCGGCCAGGCTCCTTCATCGTCCGCCCTCC
 GTTGCCCTACTGCAAAGCAAGTTTCGACCTCGGCGGAGCGCAACGCCACCTGCACATCTGCATAG
 GCCCTGGAAGTGGGCCGTGTGCAGTTTCGCTCCAGCCAGGAGGAGGAGCTGCTGCACCACGCCTGACG
 GCCACAGGGGCTCCCGAGCGTCCCTGGCGGCCACCTCCGCTGCGCTCCGCCTCAGCCTCAGCCTCAGC
 CTCCACCCAGCCGAACCCAGATCAGTCCCCAGCCGGAGCCGGAGCCGGAGCCGAACGTGAGGCAAC
 CCCGACCCAGCTCCTGCCGCTCCCGAGGAGCCCCAGCGCTCCGGAGTTCCGCTGCCAAGTGTGCGGC
 CAGAGCTTTACACAGTCTTGTTTCTCAAGGGCCACATGCGTAAGCACAAGGCTCCTTCGATCATGCGT
 GTCCGGTGTGCGGCCGCTGCTTCAAGGAGCCCTGGTTCCTTAAGAACCACATGAAGGTGCACGCCAGCAA
 GCTGGGCCACTGCGTCCCCGGGGCTGCCTCCGGGCTGCCCGCGCCCCAGCCTCTGACCTCGGC
 CTGCTGGCCTATGAGCCGTTGGGCCAGCGCTCCTTTGGCCCCGGCTCCACCCCGCCGAGCGCCGTG
 AGCCCCGAGCCTTTGGGCTACCTGAGCTGCGAGCTGGCGAGGGCCGGCCCAACGGCGAGGGTGTGA
 GCCCGGTCCCGGCCGACGCTTCGGAGGCTTCCGCCCGCTGTCTCTGCTTCCCGGCCCGGGCTCGCCGG
 CACCGTGCAGGAGCCTGAGGAAGAAGAGGAGGTGGTGGAGGCCGAGGAGGAAACCTGGGCCCGGGCA
 GGTCTGCTGGGCTCTCTGGCTTCCCTGCACCCGCGCCCGGGTGGAGGACCGGGCACTCTGCCTCTGCTGC
 TGGGGCCAGGCAAGATCGACCGCCACGCAGGAAGAGAAATGGGCTGTTGGTTGGAGGACCCGGCCTGAA
 GGGGGCCGGGGCCACCGCAAGGATTGTCTTTCTGCGGAAAATCTTCCGCTCAGCACATCACCTCA
 AAGTGCATCTGCGAGTGCACACAGGCGAGCGGCCCTACAAGTGTCCGCACTGCGACTACGCGGGCACCA
 GTCCGGCTCGCTCAAGTATCACCTACAGCGCCACCACCGGAGCAGAGGAGCGGGCCGGCCCCGGGCA
 CCCCCGAGCCACCGCTCCTTCCAGCGGGGTTCCGGCCCGCAATCTGGAGCCAAGCCGTCTCCGAGC
 CTGCGACCTGGTGGAGGGCGCCTCAAGTCCCCGGCCTCCTTCTAGCGGTGCTGGCCGGGGTCCCGTCCG
 GAAGCCCGCCAGCCCTGGGAGGACCTGCGCAACGGGCGAGGCGGTGAGGCCGAACCCCTGGACCTGTCC
 TTGCGGGCAGGGCCGGGAGGCGAGGCGGGGCTGGGGGTGCCCTCCACCGCTGCCTCTTCTGCCGTTCCG
 CCACTGGAGCCCCAGAGCTCATGGCCTTGACCTTCAAGTGCACCACAGCCCGCGGGCTAGGGGCCGCCG
 GCCACCCAGGCTGACGCGTCCCGCCCTATGCCCGAGTACCATCAGGAGAGACCCTCCAGTCCCTTCG
 CAGGAAGGGGAGGAGGGCTCCGGCTGTCCAGACCCGGAGAGGCAGGGCTGGGGGGCAAGAACGG

AG**CGGACCG**ACGCGTACGCGGCCGCTCGAG - GFP Tag - GTTTAA

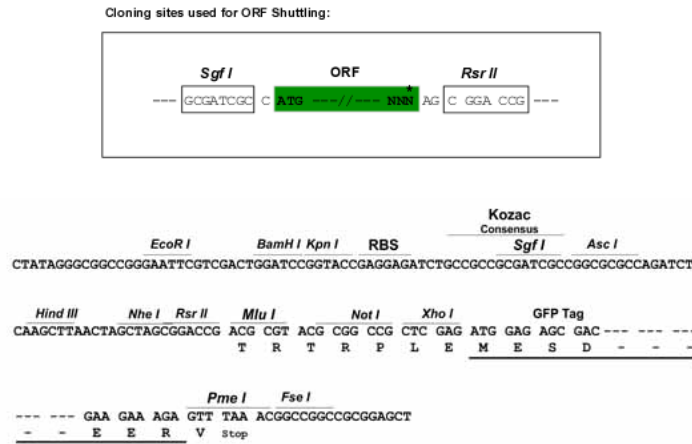
Protein Sequence: >RG212535 representing NM_001102454
 Red=Cloning site Green=Tags(s)

MEGSRPRAPSGHLAPSPPAFDGELDLQRYSNPVAVSAGSLGMGAVSWSES RAGERRFPCVCGKRFRFNS
 ILALHLRAHPGAQAFQCPHCGHRAAQRALLRSHLRTHQPERPRSPAARLLELEERALLREARLGRARSS
 GGMQATPATEGLARPQAPSSSAFRCPYCKGKFR TSAERERHLHILHRPWKCGLCSFGSSQEEELLHHSLT
 AHGAPERLAATS AAPPQPQPQPQPPEPRSVQPPEPEPEPEREATPTPAPAAPEEPPAPPEFRCQVCG
 QSFTQSWFLKGHMRKHKASFHDHACPVCGRCFKEPWFLKNHMKVHASKLGPLRAPGPASGPAPAPQPPDLG
 LLAYEPLGPALLLAPAPTPAERREPPSLGLYLSLRAGEGRPNGEAEPGGRSFGGFRPLSSALPARARR
 HRAEEPEEEEEVVEAEEETWARGRSLGSLASLHPRPGEGPGHSASAAGAQRSTATQEENGLLVGGTRPE
 GGRGATGKDCPFCKGSAHHLKVHLRVHTGERPYKCPHCDYAGTQSGSLKYHLQRHREQRSGAGPGP
 PPEPPPSQRGSAPQSGAKPSPQATWVEGASSRPPSSGAGPGSRRKPASPGRTLNRNGRGEAEPLDLS
 LRAGPGGEAGPGGALHRCLFCPFATGAPELMALHLQVHHSRRARGRRPPQADASPPYARVPSGETPPSPS
 QEGEEGSLSRPGEAGLGGQER

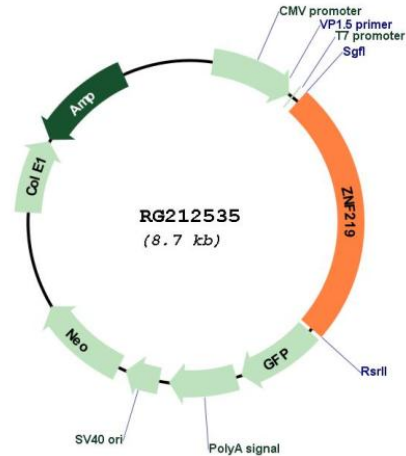
SGPTRRRLE - GFP Tag - V

Restriction Sites: SgfI-RsrII

Cloning Scheme:



Plasmid Map:



ACCN: NM_001102454

ORF Size: 2166 bp

OTI Disclaimer: The molecular sequence of this clone aligns with the gene accession number as a point of reference only. However, individual transcript sequences of the same gene can differ through naturally occurring variations (e.g. polymorphisms), each with its own valid existence. This clone is substantially in agreement with the reference, but a complete review of all prevailing variants is recommended prior to use. [More info](#)

OTI Annotation: This clone was engineered to express the complete ORF with an expression tag. Expression varies depending on the nature of the gene.

Components: The ORF clone is ion-exchange column purified and shipped in a 2D barcoded Matrix tube containing 10ug of transfection-ready, dried plasmid DNA (reconstitute with 100 ul of water).

Reconstitution Method:

1. Centrifuge at 5,000xg for 5min.
2. Carefully open the tube and add 100ul of sterile water to dissolve the DNA.
3. Close the tube and incubate for 10 minutes at room temperature.
4. Briefly vortex the tube and then do a quick spin (less than 5000xg) to concentrate the liquid at the bottom.
5. Store the suspended plasmid at -20°C. The DNA is stable for at least one year from date of shipping when stored at -20°C.

RefSeq: [NM_001102454.1](#), [NP_001095924.1](#)

RefSeq Size: 2954 bp

RefSeq ORF: 2169 bp

Locus ID: 51222

UniProt ID: [Q9P2Y4](#)

Cytogenetics: 14q11.2

Protein Families: Transcription Factors

Gene Summary: This gene is a member of the Kruppel-like zinc finger gene family. The encoded protein functions as a transcriptional repressor of the high mobility group nucleosome binding domain 1 protein, which is associated with transcriptionally active chromatin. [provided by RefSeq, Apr 2017]