

## Product datasheet for **RG212488**

### Rabenosyn 5 (RBSN) (NM\_022340) Human Tagged ORF Clone

#### Product data:

Product Type:	Expression Plasmids
Product Name:	Rabenosyn 5 (RBSN) (NM_022340) Human Tagged ORF Clone
Tag:	TurboGFP
Symbol:	Rabenosyn 5
Synonyms:	Rabenosyn-5; ZFYVE20
Mammalian Cell Selection:	Neomycin
Vector:	pCMV6-AC-GFP (PS100010)
E. coli Selection:	Ampicillin (100 ug/mL)



[View online »](#)

**ORF Nucleotide  
Sequence:**

>RG212488 representing NM\_022340  
 Red=Cloning site Blue=ORF Green=Tags(s)

TTTTGTAATACGACTCACTATAGGGCGGCCGGAATTCGTCGACTGGATCCGGTACCGAGGAGATCTGCC  
 GCC**CGGATCGCC**

ATGGCTTCTCTGGACACCCAGGGGAAGTGAGGGAGGGCTTCCTCTGCCCTCTGTGCCTGAAGGATCTGC  
 AGTCTTTCTATCAGCTTCACTCACATTACGAGGAAGAACAACACTCAGGGGAAGACCGTGATGTCAAAGGGCA  
 AATTAAGTCTTGTCCAGAAGGCTAAAAAAGCAAAGGACAGGTTGTTGAAACGAGAAGGGGATGATCGA  
 GCAGAGTCAGGGACCCAAGGATATGAGTCTTTCAGCTATGGAGGGGTTGATCCTTACATGTGGGAACCC  
 AGGAGCTTGGTGTGTGAGAAGCCATCTTCCGACTTCAAAAAACACCGAGCTGTAGAATTGACCACTA  
 TGTTTGGGAAGTCAATAAACTAATAATCAGGTTAGAGAAGCTCACTGCATTTGACAGAACAATACTGAG  
 TCTGCAAAGATTCGAGCAATAGAAAAGTCTGTGGTGCCTTGGGTCAACGACCAGGATGTCCTTTCTGTC  
 CAGACTGTGGGAATAAGTTCAGCATCCGGAACCGCCACCCTGCCGCTCTGCGGGTCTATTATGTG  
 CAAGAAGTGTATGGAGCTCATCAGCTTCCCTTGGCAAACAAGCTCACCAGTGCCAGCAAGGAGTCCCTG  
 AGCACCCACACGACCCAGCCAGTCACCAACAGTGTCCATGGCTCCCGCCGAGGCAGCATCAGCAGCA  
 TGAGCAGTGTGAGCTCGGTCTGGATGAGAAGGACGATGACCGGATCCGCTGCTGTACACACTGCAAGGA  
 CACGCTGCTCAAGAGAGAGCAGCAGATTGATGAGAAGGAGCACACACCTGACATCGTGAAGCTCTACGAG  
 AAATTACGACTTTGCATGGAGAAAGTTGACCAGAAAGCTCCAGAATACATCAGGATGGCAGCATCATTAA  
 ATGCTGGGGAGACAACCTACAGTCTGGAACATGCCAGTGACCTTCGAGTGGAAAGTGCAGAAAAGTGTATGA  
 GCTGATAGACGCTTAAAGTAAGAAGATCTAACCTTGGGCTTGAACCAGGACCCTCCACCACATCCAAGC  
 AATTTGCGGCTGCAGAGAATGATCAGATACTCAGTACACTTTTGTGCAGGAAAAGTGGCTTGGTTTGA  
 TGTCACTGCCAACCAAGAAGACGTTTGGGAAGTGAAGAAAGAAAGGAAGGAGGAAATGGAGAGGAAGAG  
 GGCCGTGGAGAGACAAGCTGCCCTGGAGTCCCAGCGAAGGCTTGAGGAAAGGCAGAGTGGCCTGGCTTCT  
 CGAGCGGCCAACGGGAGGTGGCATCTCTCCGACGGGGCCCTGCCCTTGAAGAAAGGCTGAGGGCTGGC  
 TCCCACTGTGAGGAGTCAAGGGCAGAGTGAAGTCAAGGAGTCAAGGAGTCAAGGAGTCAAGGAGTCAAGG  
 ATCATTATCAGGAGGCAAGGCGCGGGCCGATGGATGAAGTGCACACTCTGCAGGAGAACCTGCGG  
 CAGCTGCAGGACGAGTATGACCAGCAGCAGACAGAGAAGGCCATCGAGCTGTCCCGAGGAGGCTGAGG  
 AGGAGGACCTGCAGCGGGAACAGCTGCAGATGTTGCGTGAACGGGAGTTGGAACGAGAAAGGGAGCAGTT  
 TCGGGTGGCATCCCTGCACACACGACTCGGTCCCTGGACTTCAGAGAAATCGGCCCTTTTCAGCTGGAG  
 CCCAGCAGAGAGCCTCGCACCCACCTTGTATGCTTTGGATCTAGGCTCTTCCCAGTTCGAAGCAGCA  
 CAGCTCCCAAGACCCCTTCACTTAGCTCAACTCAACCCACCAGAGTGTGGTCTGGGCCCCAGCCGTTGG  
 CCAGGAGCGCTTACCCAGAGCAGCATGCCACAGCAACATGAGGGGCCCTCCTTAAACCCCTTTGATGAG  
 GAAGACCTCTCCAGCCCATGGAAGAGGCCACTACTGGTCTCCTGCTGCAGGGGTTTCTTAGACCCCTT  
 CAGCCCGCATCCTGAAAGAGTACAATCCTTTGAGGAAGAGGACGAGGAGGAGGAAGCAGTGGCAGGGAA  
 TCCATTATTCAGCCAGACAGCCAGCTCCTAACCCCTTCAGTGAGGAAGACGAACATCCCAGCAGAGG  
 CTCTCAAGCCCTCTGGTTCCTGGTAACCCCTTTGAGGAACCCACCTGTATCAACCCCTTTGAGATGGACA  
 GTGACAGTGGGCCAGAGGCTGAGGAGCCATAGAGGAAGAGCTCCTCCTGCAGCAGATCGATAACATCAA  
 GGCATACATCTTTGATGCCAAGCAGTGGCGCCGCTGGATGAGGTAGAGGTGCTGACAGAGAATCTGCGG  
 GAGCTGAAGCACACCCCTGGCCAAGCAGAAGGGGGCACTGACTG

**ACGCGT**ACGCGGCCGCTCGAG – GFP Tag – GTTTAA

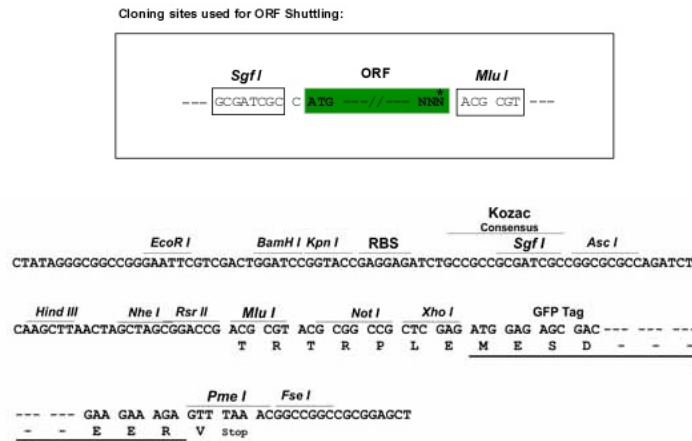
**Protein Sequence:** >RG212488 representing NM\_022340  
 Red=Cloning site Green=Tags(s)

```
MASLDDPGEVREGFLCPLCLKDLQSFYQLHSHYEEHSGEDRDVKGQIKSLVQKAKKADRLKREGDDR
AESGTQGYESFSYGGVDPYMWEPQELGAVRSHLSDFKHKHRAARIDHYVVEVNKLIIRLEKLTAFDRNTTE
SAKIRAIEKSVVPWVNDQDVPFPCDCGNKFSIRNRRHHCRLCGSIMCKKCMELISLPLANKLTSASKESL
STHTSPSQSPNSVHGSRSGISSMSSVSVSLDEKDDDRIRCCTHCKDITLLKREQQIDEKEHTPDIVKLYE
KLRLCMEKVDQKAPEYIRMAASLNAGETTSLEHASDLRVEVQKVYELIDALSKKILTLGLNQDPPPHPS
NLRLQRMIRYSATLQVQEKLLGLMSLPTKEQFEELKKRKEEMERKRAVERQAALLESQRRLEERQSGLAS
RAANGEVASLRRGPAPLKAEGWLPVSGGQGSSESDPQLQIHNITSFIRQAKAAGRMDEVRTLQENLR
QLQDEYDQQTEKAIELSRQAEEDLQREQLQMLRERELEREREQFRVSLHTRTRSLDFREIGPFQLE
PSREPRTHLAYALDLGSSPVPSTAPKTPSLSTQPTRVWSGPPAVGQERLPQSSMPQQHEGPSLNPFDE
EDLSSPMEEATTGPPAAGVSLDPSARILKEYNPFEEDEEEEAAGVAGNPFIQPDSAPNPFSEDEHPQQR
LSSPLVPGNPFEEPTCINPFEMSDSGPEAEETIEEELLLQQIDNIKAYIFDAKQCGRLDEVEVLTENLR
ELKHTLAKQKGGTD
```

TRTRPLE - GFP Tag - V

**Restriction Sites:** SgfI-MluI

**Cloning Scheme:**



**ACCN:** NM\_022340

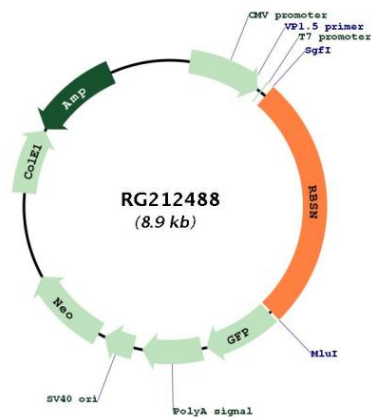
**ORF Size:** 2354 bp

**OTI Disclaimer:** The molecular sequence of this clone aligns with the gene accession number as a point of reference only. However, individual transcript sequences of the same gene can differ through naturally occurring variations (e.g. polymorphisms), each with its own valid existence. This clone is substantially in agreement with the reference, but a complete review of all prevailing variants is recommended prior to use. [More info](#)

**OTI Annotation:** This clone was engineered to express the complete ORF with an expression tag. Expression varies depending on the nature of the gene.

<b>Components:</b>	The ORF clone is ion-exchange column purified and shipped in a 2D barcoded Matrix tube containing 10ug of transfection-ready, dried plasmid DNA (reconstitute with 100 ul of water).
<b>Reconstitution Method:</b>	<ol style="list-style-type: none"> <li>1. Centrifuge at 5,000xg for 5min.</li> <li>2. Carefully open the tube and add 100ul of sterile water to dissolve the DNA.</li> <li>3. Close the tube and incubate for 10 minutes at room temperature.</li> <li>4. Briefly vortex the tube and then do a quick spin (less than 5000xg) to concentrate the liquid at the bottom.</li> <li>5. Store the suspended plasmid at -20°C. The DNA is stable for at least one year from date of shipping when stored at -20°C.</li> </ol>
<b>RefSeq:</b>	<u><a href="#">NM_022340.4</a></u>
<b>RefSeq Size:</b>	6678 bp
<b>RefSeq ORF:</b>	2355 bp
<b>Locus ID:</b>	64145
<b>UniProt ID:</b>	<u><a href="#">Q9H1K0</a></u>
<b>Cytogenetics:</b>	3p25.1
<b>Domains:</b>	FYVE
<b>Protein Families:</b>	Transcription Factors
<b>Protein Pathways:</b>	Endocytosis
<b>Gene Summary:</b>	This gene encodes a protein that belongs to the FYVE zinc finger family of proteins. The encoded protein interacts with Ras-related proteins that regulate membrane trafficking. A missense mutation in this gene is associated with a defect in the early endocytic pathway. Alternative splicing results in multiple transcript variants. [provided by RefSeq, Oct 2014]

### Product images:



Circular map for RG212488