

## Product datasheet for **RG212486**

### SMG7 (NM\_173156) Human Tagged ORF Clone

#### Product data:

Product Type:	Expression Plasmids
Product Name:	SMG7 (NM_173156) Human Tagged ORF Clone
Tag:	TurboGFP
Symbol:	SMG7
Synonyms:	C1orf16; EST1C; SGA56M
Mammalian Cell Selection:	Neomycin
Vector:	pCMV6-AC-GFP (PS100010)
E. coli Selection:	Ampicillin (100 ug/mL)
ORF Nucleotide Sequence:	>RG212486 representing NM_173156 Red=Cloning site Blue=ORF Green=Tags(s)

TTTTGTAATACGACTCACTATAGGGCGGCCGGAATTCGTCGACTGGATCCGGTACCGAGGAGATCTGCC  
GCC**CGATCGCC**

ATGAGCCTGCAGAGCGCGCAGTACCTCCGGCAGGCAGAAAGTCTGAAGGCTGACATGACAGATTCTAAGC  
TGGGTCCAGCTGAAGTCTGGACATCCAGGCAGGCTCTGCAGGACCTGTACCAGAAAATGCTAGTTACCGA  
TTTGAATACGCTTTAGACAAGAAAGTAGAACAGGATCTCTGGAATCACGCCTTTAAGAATCAGATCACA  
ACACTGCAAGGCCAGGCAAAGAATCGAGCAAATCCGAATCGGAGTGAAGTTCAGGCAAACCTTTCTCTGT  
TCCTAGAGGCAGCTAGTGGCTTCTATACTCAGTTATTACAAGAACTGTGTACAGTATTTAATGTAGATTT  
ACCATGCCGTGTGAAGTCTTCCCAATTGGGAATTATCAGCAATAAACAGACGCATACCAGCGCCATAGTG  
AAGCCACAGTCTAGCTCCTGTTCTATATCTGCCAGCACTGCCTCGTCCACCTTGAGACATTGCTCGAT  
ACAGAAACCAGACCAGCCAGGCAGAGTCTACTATAGGCATGCAGCTCAGCTTGTCCCCTCCAATGGTCA  
GCCTTATAATCAGTTGGCTATCTTAGCTTCTTCCAAAGGAGACCCTGACCACAATTTTCTACTACTGC  
AGAAGCATTGCTGTGAAGTTCCTTTCCAGCTGCCTCCACTAATCTGCAAAAAGCACTTTCTAAAGCAC  
TGGAAAGCCGAGATGAGGTGAAAACCAAGTGGGGTGTCTTCTGACTTCATCAAGGCCTTTATTAATTTCCA  
CGGTCATGTGTACCTGAGTAAGAGCTTGGAAAAGTTGAGCCCTCTCGAGAGAAAATTGGAAGAACAGTTC  
AAGAGGCTGCTATTCCAAAAGCTTTCAACTCTCAGCAGTTAGTTCATGCTACTGCATTAACTGTTTC  
AACTTCATCACCTTCGTGACTTTAGCAATGAAACCGAGCAGCACACTTATAGCCAAGATGAGCAGCTATG  
TTGGACACAGTTGCTGGCCCTCTTATGTCTTTCTTGGCATCCTGTGCAAGTGTCTCTACAGAATGAG  
TCTCAGGAGGAGTCTACAATGCCTATCCTCTTCCAGCAGTCAAGGTCTCCATGGACTGGCTAAGACTCA  
GACCCAGGGTCTTTCAGGAGGCAGTGGTGGATGAAAGACAGTACATTTGGCCCTGGTTGATTTCTCTTCT  
GAATAGTTTCCATCCCCATGAAGAGGACCTCTCAAGTATTAGTGCACACCCTTCCAGAGGAGTTTGAA  
TTACAAGGATTTTGGCATTGAGACCTTCTTTCAGGAAGTGGATTTTCCAAAGGTCACCAGGGTATTA  
CAGGGGACAAAGAAGGCCAGCAACGACGAATACGACAGCAACGCTTGATCTCTATAGGCAAATGGATTGC  
TGATAATCAGCCAAGGCTGATTCAGTGTGAAAATGAGGTAGGGAATTTGTTTATCACAGAAATCCCA



[View online »](#)

```

GAATTAATACTGGAAGACCCAGTGAAGCCAAAGAGAACCTCATTCTGCAAGAAACATCTGTGATAGAGT
CGCTGGCTGCAGATGGGAGCCAGGGCTAAAATCAGTGTATCTACAAGCCGAAATTTAAGCAACAACCTG
TGACACAGGAGAGAAGCCAGTGGTTACCTTCAAAGAAAACATTAAGACACGAGAAGTGAACAGAGACCAA
GGAAGAAGTTTTCTCCCAAAGAGGTGAGAAGGGACTATAGCAAAGGAATAACTGTAACCTAAGAATGATG
GAAAGAAGGACAACAACAAGAGGAAAACCTGAAACCAAGAAATGCACCTTAGAAAAGTTACAGGAAACAGG
AAAGCAGAATGTGCAGTGCAGGTAATAATCCCAGACAGAACTAAGAAAAGACTCCAGTGTCTGAAGCCAGA
AAAACACCTGTAACCTCAAACCCCAACTCAAGCAAGTAACCTCCAGTTCATCCCCATCATCACCCCTGGAG
CCTTCCCTCCTTCCCAGCAGGCCAGGGTTCCGCCCAACATATGTTATCCCCCGCCTGTGGCATT
TTCTATGGGCTCAGGTTACACCTTCCCAGCTGGTGTCTGTCCCAGGAACCTTTCTTACGCTACAGCT
CACTCTCCAGCAGGAAACCAGGTGCAAGCTGGGAAACAGTCCCACATTCCTTACAGCCAGCAACGGCCCT
CTGGACCAGGGCAATGAACCAGGGACCTCAACAATCACAGCCACCTTCCCAGCAACCCCTTACATCTTT
ACCAGCTCAGCCAACAGCACAGTCTACAAGCCAGCTGCAGGTTCAAGCTCTAACTCAGCAACAACAATCC
CCTACAAAAGCTGTGCCGGCTTTGGGAAAAGCCCGCTCACCCTCTGGATTCCAGCAGTATCAACAGG
CAGATGCCTCAAACAGCTGTGGAATCCCCTCAGGTTCAAGGCCATTAGGAAAATTATGCCTGTGAA
ACAGCCCTACTACCTTCCAGCCCAAGACCCCATAAAAGTGTGAGCCGTCATTGCAACCTCCTGTAAATG
CAGCAGCAGCCTTAGAAAAAAAATGAAGCCTTTCCCATGGAGCCATATAACCATAATCCCTCAGAAG
TCAAGGTCCCAGAATTCTACTGGGATTCTTCTACAGCATGGCTGATAACAGATCTGTAATGGCACAGCA
AGCAAAACATAGACCGCAGGGGCAACCGGTCAACAGGAGTCTCCGTCCAGAGCAGGATCCTGTACCCAGA
ATGCCGTTTGAGAAATCCTTATTGGAGAAGCCCTCAGAGCTCATGTACACATTCATCCTCTTCTGTCCC
TCACCGGATTCTCTCAATCAGGAAAGATACCCAAATAATAGTATGTTCAATGAGGATATATGGGAAAAA
CCTGACATCCAGCTCAAAGCAGAACTCAGTCCCTCAATGGCCCCCAGGAAACATCTCTGTATTCCTT
TTTGAAGGACTCCGTGGTCTCCATCACTTCTGCCAGTTCAGATCATTCAACACCAGCCAGCCAGTCTC
CTACTCTTAACCCAAGCAGCCTACCAGCTCTCCTCAACACACAACCATAATTCTGTTCATTCTC
CAATTTTGGACCCATTGGGACTCCAGATAACAGGGATAGAAGGACTGCAGATCGGTGAAAAATGATAAG
CCAGCCATGGGTGGGTTTGGCATTGATTATCTCTCAGCAACGTCATCCTCTGAGAGCAGTTGGCATTAGG
CCAGCACTCCGAGTGGCACCTGGACAGGCCATGGCCCTTCCATGGAGGATTCTCTGCTGTCTCATGGA
AAGCCTAAAGTCTATCTGGTCCAGTTCATGATGCATCCTGGACCTTCTGCTCTGGAGCAGCTGTTAATG
CAGCAGAAGCAGAAACAGCAACGGGACAAGGCACCATGAACCTCCACAC
    
```

ACGCGTACGCGGCCGCTCGAG – GFP Tag – GTTTAA

**Protein Sequence:**

>RG212486 representing NM\_173156  
 Red=Cloning site Green=Tags(s)

```

MSLQSAQYLRAEVLKADMTDSKLGPAEVTWSRQALQDL YQKML VTDLEYALDKKVEQDLWNHAFKNQIT
TLQGQAKNRANPNRSEVQANLSLFL EAAAGFYTQLLQELCTVFNVDLPCR VKSSQLGIISNKQHTHTSAIV
KPQSSSCSYICQHCLVHLGDIARYRNQTSQAESYYRHAALVPSNGQPYNQLAILASSKGDHLTTIFYYC
RSIAVKFPFPAASTNLQKALSKALESRDEVKTKWGVSDFIKAFIKFHGHVYLSKSLEKLSPLREKLEEQF
KRLLFQKAFNSQQLVHVTVINLFLHHLRDFSNETE QHTYSQDEQLCWTQLLALFMSFLGILCKCPLQNE
SQEESYNA YPLPAVKVSMDWLRLRPRVQEAVVDERQYIWPWLSLLNSFHPHEEDLSSISATPLPEEFE
LQGFLALRPSFRNLDFSKGHQGITGDKGQRRIRQQLISIGKWIADNPRLIQCENEVGLLFFITEIP
ELILEDPSEAKENLILQETSVIESLAADGSPGLKSVLSTSRNLSNNCDTGEKPVVTFKENIKTREVNRDQ
GRSFPPKEVRRDYSGKITVTKNDGKKNKRKTEKTKCTLEKLQETGKQNVAVQVKSQTELKRPVSEAR
KTPVTQTPTQASNSQFIPIHHPGAFPLPSRPGFPPPTVYIPPPVAFSMGSGYTFPAGVSVPGTFLQPTA
HSPAGNQVQAGKQSHIPYSQQRPSGPGPMNQGPQSQPPSQQLTSLPAQPTAQSTSQLQVQAL TQQQQS
PTKAVPALGKSPPHSGFQQYQQADASKQLWNPPQVQGPLGKIMPVKQPYLQTQDPIKLFEPQLQPPVM
QQQPLEKMKPFMPPEYNHNPSEVKVPEFYWDSSYSMADNRSVMAQQANIDRRGKRSPGVFRPEQDPVPR
MPFEKSLLEKPSLMSHSSFLSLTGFSLNQERYPNNSMFNEVYGNL TSSKAELSPSMAPQETSLYSL
FEGTPWSPSLPASSDHSTPASQSPHSSNPSSLSPSPPTHNHNSVPF SNFGPIGTPDNRDRRTADRWKTDK
PAMGGFGIDYLSATSSSESSWHQASTPSGTWTGHGSPMEDSSAVLMESLKSIWSSSMHPGPSALEQLLM
QQKQKQQRGQGTMNPPH
    
```

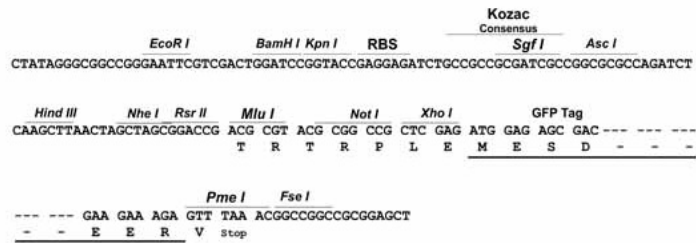
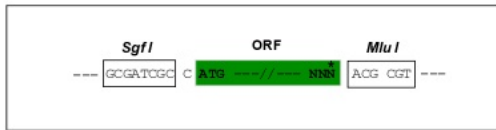
TRTRPLE – GFP Tag – V

Restriction Sites:

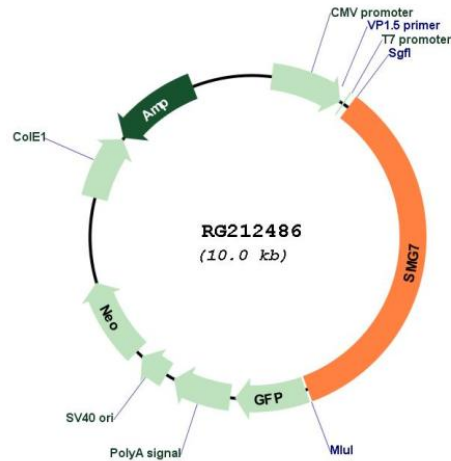
SgfI-MluI

Cloning Scheme:

Cloning sites used for ORF Shuttling:



## Plasmid Map:



ACCN: NM\_173156

ORF Size: 3411 bp

OTI Disclaimer: The molecular sequence of this clone aligns with the gene accession number as a point of reference only. However, individual transcript sequences of the same gene can differ through naturally occurring variations (e.g. polymorphisms), each with its own valid existence. This clone is substantially in agreement with the reference, but a complete review of all prevailing variants is recommended prior to use. [More info](#)

OTI Annotation: This clone was engineered to express the complete ORF with an expression tag. Expression varies depending on the nature of the gene.

Components: The ORF clone is ion-exchange column purified and shipped in a 2D barcoded Matrix tube containing 10ug of transfection-ready, dried plasmid DNA (reconstitute with 100 ul of water).

Reconstitution Method:

1. Centrifuge at 5,000xg for 5min.
2. Carefully open the tube and add 100ul of sterile water to dissolve the DNA.
3. Close the tube and incubate for 10 minutes at room temperature.
4. Briefly vortex the tube and then do a quick spin (less than 5000xg) to concentrate the liquid at the bottom.
5. Store the suspended plasmid at -20°C. The DNA is stable for at least one year from date of shipping when stored at -20°C.

RefSeq: [NM\\_173156.3](#)

RefSeq Size: 5936 bp

RefSeq ORF: 3414 bp

Locus ID: 9887

UniProt ID: [Q92540](#)

Cytogenetics: 1q25.3

**Gene Summary:**

This gene encodes a protein that is essential for nonsense-mediated mRNA decay (NMD); a process whereby transcripts with premature termination codons are targeted for rapid degradation by a mRNA decay complex. The mRNA decay complex consists, in part, of this protein along with proteins SMG5 and UPF1. The N-terminal domain of this protein is thought to mediate its association with SMG5 or UPF1 while the C-terminal domain interacts with the mRNA decay complex. This protein may therefore couple changes in UPF1 phosphorylation state to the degradation of NMD-candidate transcripts. Alternative splicing results in multiple transcript variants encoding distinct isoforms. [provided by RefSeq, Aug 2011]