

Product datasheet for **RG212475**

Amino terminal enhancer of split (AES) (NM_001130) Human Tagged ORF Clone

Product data:

Product Type: Expression Plasmids
Product Name: Amino terminal enhancer of split (AES) (NM_001130) Human Tagged ORF Clone
Tag: TurboGFP
Symbol: Amino terminal enhancer of split
Synonyms: AES; AES-1; AES-2; ESP1; GRG; Grg-5; GRG5
Mammalian Cell Selection: Neomycin
Vector: pCMV6-AC-GFP (PS100010)
E. coli Selection: Ampicillin (100 ug/mL)
ORF Nucleotide Sequence: >RG212475 representing NM_001130
 Red=Cloning site Blue=ORF Green=Tags(s)

TTTTGTAATACGACTCACTATAGGGCGCCGGGAATTCGTCGACTGGATCCGGTACCGAGGAGATCTGCC
 GCC**CGATCGCC**

ATGATGTTTCCACAAAGCAGGCATTGGGGCTCCTCGCACCTACCCAGCAACTCAAATTCACCACCTCGG
 ACTCCTGCGACCGCATCAAAGACGAATTCAGCTACTGCAAGCTCAGTACCACAGCCTCAAGCTCGAATG
 TGACAAGTTGGCCAGTGAGAAGTCAGAGATGCAGCGTCACTATGTGATGTACTACGAGATGTCCTACGGC
 TTGAACATCGAGATGCACAAACAGGCTGAGATCGTCAAAGGCTGAACGGGATTTGTGCCAGGTCCTCGC
 CCTACCTCTCCAAGAGCACCAGCAGCAGTCTTGGGAGCCATTGAGAGGGCCAAGCAGGTCACCGCTCC
 CGAGCTGAACTCTATCATCCGACAGCAGCTCCAAGCCCACAGCTGTCCCAGCTGCAGGCCCTGGCCCTG
 CCCTTGACCCACTACCCGTGGGGCTGCAGCCGCTTCGCTGCCGGCGGTGAGCGCAGGCACCGGCTCC
 TCTCGCTGTCGCGCTGGGTTCCAGGCCACCTCTCAAAGGAAGACAAGAACGGGCACGATGGTGACAC
 CCACCAGGAGGATGATGGCGAGAAGTCGGAT

ACGCGTACGCGGCCGCTCGAG - GFP Tag - GTTTAA

Protein Sequence: >RG212475 representing NM_001130
 Red=Cloning site Green=Tags(s)

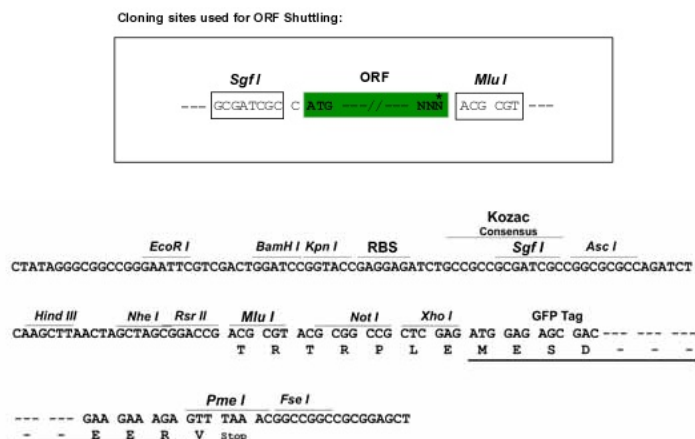
MMFPQSRHSGSSHLPPQLKFTTSDSCDRIKDEFQLLQAQYHSLKLECDKLASEKSEMQRHYVMYEMSYG
 LNIEMHKQAEIVKRLNGICAQVLPYLSQEHQQQVLGAIERAKQVTAPELNSIIRQQLQAHQLSQLQALAL
 PLTPLPVLQPPSLPAVSAGTGLLSLSALGSAHLKEDKNGHDGDTHQEDDGEKSD

TRTRPLE - GFP Tag - V

Restriction Sites: SgfI-MluI



[View online »](#)

Cloning Scheme:


ACCN: NM_001130

ORF Size: 591 bp

OTI Disclaimer: The molecular sequence of this clone aligns with the gene accession number as a point of reference only. However, individual transcript sequences of the same gene can differ through naturally occurring variations (e.g. polymorphisms), each with its own valid existence. This clone is substantially in agreement with the reference, but a complete review of all prevailing variants is recommended prior to use. [More info](#)

OTI Annotation: This clone was engineered to express the complete ORF with an expression tag. Expression varies depending on the nature of the gene.

Components: The ORF clone is ion-exchange column purified and shipped in a 2D barcoded Matrix tube containing 10ug of transfection-ready, dried plasmid DNA (reconstitute with 100 ul of water).

Reconstitution Method:

1. Centrifuge at 5,000xg for 5min.
2. Carefully open the tube and add 100ul of sterile water to dissolve the DNA.
3. Close the tube and incubate for 10 minutes at room temperature.
4. Briefly vortex the tube and then do a quick spin (less than 5000xg) to concentrate the liquid at the bottom.
5. Store the suspended plasmid at -20°C. The DNA is stable for at least one year from date of shipping when stored at -20°C.

RefSeq: [NM_001130.6](#)

RefSeq Size: 1687 bp

RefSeq ORF: 594 bp

Locus ID: 166

UniProt ID: [Q08117](#)

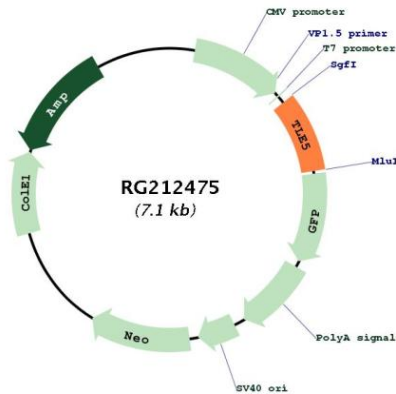
Cytogenetics: 19p13.3

Domains: TLE_N

Protein Families: Druggable Genome, Transcription Factors

Gene Summary: The protein encoded by this gene is similar in sequence to the amino terminus of Drosophila enhancer of split groucho, a protein involved in neurogenesis during embryonic development. The encoded protein, which belongs to the groucho/TLE family of proteins, can function as a homooligomer or as a heterooligomer with other family members to dominantly repress the expression of other family member genes. Three transcript variants encoding different isoforms have been found for this gene. [provided by RefSeq, Jul 2008]

Product images:



Circular map for RG212475