

Product datasheet for **RG212440**

CENTG3 (AGAP3) (NM_031946) Human Tagged ORF Clone

Product data:

Product Type:	Expression Plasmids
Product Name:	CENTG3 (AGAP3) (NM_031946) Human Tagged ORF Clone
Tag:	TurboGFP
Symbol:	AGAP3
Synonyms:	AGAP-3; CENTG3; cnt-g3; CRAG; MRIP-1
Mammalian Cell Selection:	Neomycin
Vector:	pCMV6-AC-GFP (PS100010)
E. coli Selection:	Ampicillin (100 ug/mL)



[View online »](#)

**ORF Nucleotide
Sequence:**

>RG212440 representing NM_031946
 Red=Cloning site Blue=ORF Green=Tags(s)

TTTTGTAATACGACTCACTATAGGGCGGCCGGGAATTCGTCGACTGGATCCGGTACCGAGGAGATCTGCC
 GCC**CGGATCGCC**

ATGAACCTCCAGGCGGGCGGGGCGAGAGCCCGCAGCAGCAGCAGAGCCTGGCGGCTCCGGGGGCGGCG
 GCGCTGCCGCGCAGCAGCTCGTCTGCGGCGGGCAGTTCGGCGGCGCGGGGCCCGGGGCGGCGCGG
 CGGCCCTCGCAGCAGCTGGCGGCGGGCCCCCAGCAGTTCGCGCTCTCCAATCCGCGGCCATCCGG
 GCCGAGATCCAGCGCTTCGAGTCGTCATCCCAATATCTACGCCATCTACGACCTGATCGAGCGCATCG
 AGGATTTGGCGCTGCAGAACAGATCCGGGAGCAGTCATCTCCATCGAGGACTCGTTTGTGAACAGCCA
 GGAGTGGACGCTGAGCCGCTCCGTACCGGAGCTTAAAGTGGGCATAGTGGGAACCTGTCTAGCGGGAAG
 TCAGCCCTGGTGACCGCTATCTGACGGGACCTATGTCCAGGAGGAGTCCCTGAAGGGGGCGGTTTA
 AGAAGGAGATTGGTGGATGGCCAGAGTTACCTGCTGCTGATCCGAGATGAAGGAGGCCCTGAGCT
 CCAGTTTGTCTGCTGGTGGATGCAGTGGTGTGTTGTGTTAGCCTGGAGGATGAAATCAGTTTCCAGACG
 GTGTACAACTACTTCTCGCTCTCTGCAGCTTCCGCAACGCCAGCGAGGTGCCATGGTGTGTTGGGCA
 CGCAGGATGCCATCAGCGCTGCGAATCCCCGGGTATCGACGACAGCAGAGCCCGCAAGCTCTCCACAGA
 TCTGAAGCGGTGCACCTACTATGAGACGTGCGCGACCTACGGGCTCAATGTGGAGCGTGTCTCCAGGAC
 GTGGCCCAAGAAGGTAGTGGCCTTGCGAAAGAAGCAGCAACTGGCCATCGGGCCCTGCAAGTCACTGCCCA
 ACTCGCCAGCCACTCGGCCGTGTCGCCGCTCCATCCCGCGCTGCACATCAACAGGCCACGAATGG
 CGGCGGACAGCGCTTCAGCGACTACTCGTCTCAGTCCCTCCACCCAGCATCAGCCAGCGGGAGCTG
 CGCATCGAGACCATCGCTGCCTCCTCCACCCACACCCATCCGAAAGCAGTCCAAGCGGCGCTCCAACA
 TCTTACGTCTCGGAAGGTGCTGACCTGGACCGGGAGAAGAAGGCTGCCGAGTGCAAGTGGACAGCAT
 CGGGAGCGGCCCGGCCATCCCCATCAAGCAGGGGATCCTGCTAAAGCGGAGCGGCAAGTCCCTGAACAAG
 GAGTGGAGAAGAAGTATGTGACGCTCTGTGACACGGGCTGCTACCTATCACCCAGCGCTGCATGATT
 ACATGCAGAACATCCACGGCAAGGAGATTGACCTGCTGCGGACAACGGTGAAGTCCAGGGAAGCGCT
 GCCCGAGCCACCTGCCACAGCCCCGGGACACGCCCGTGCCAACGGGCTGTCCGTGGAGCGGAGT
 AACACACAGCTGGGTGGGGGACAGGTGCCCCCACTCGGCCAGCAGCGCATCCCTGCACTCTGAGCGCC
 CCCTCAGCAGCTCGGCTGGGTGGCCCGCGCCTGAGGGGCTGCACAGCGCTCCTGCTCCGTTTCCAG
 CGCGACCAAGTGGAGTGAAGCCACCACTTCCCTGCCCCAGGCATGCAGACCCCTGCCAGTGGCCAGCT
 GAGGTACTCAGTTCAGCCCCAAGCTGGATCCTCCCCATCTCCCACTCCAACCGGAAGAAGCAGCGGA
 GGAAAAAGAGCACCGGGACCCCCGACAGAGCGCCCGCAGAGTCTACTGAAGAGGCAGAGGAGTCGTT
 TGAATTTGTGGTGGTGTCCCTCACTGGGCGAGCTGGCACTTCGAGGCTTCAACGCGGAGGAGCGGGAG
 CTGTGGGTTCAGAGTGTGAGGCCAGATCCTTGCCAGCCTGCAAGGCTGCCGAGTGCAGGACAAGA
 CTCGACTGGGGAACAGAACGAGCTCTGGCTGTGACAGCCGTCCGACCGTCCGCGGAACAGCTTTTG
 TATCGACTGCGATGCACCAATCCAGACTGGGCCAGCTGAACCTGGGTGCCCTGATGTGCATTGAGTGC
 TCAGGCATCCACCGACACCTGGGGGCTCACCTGTCCCGGTGCGCTCCCTTGACCTCGATGACTGGCCGC
 CTGAGCTGCTGGCTGTATGACTGCCATGGGCAATGCCCTGCCAACAGCGTCTGGGAGGGGGCTTGGG
 TGGTACTCCAAGCCAGGGCTGATGCTGCAGAGAGGAGAAGGAACGCTGGATACGGGCCAAGTATGAA
 CAGAAGCTCTTCTGGCCCCACTGCCAAGCTCAGATGTGCCACTGGGGCAGCAGTGTCCGGGCCGTGG
 TGAAGATGACCTGCGGCTGTTGGTGTGCTCCTGGCACATGGCTCCAAAGAGGAGGTGAATGAGACCTA
 TGGGGACGGGGACGGGCGGACGGCTCTACATCTCTCAGTGCCATGGCCAACGTTGTCTTACGCAGCTG
 CTCATCTGGTACGGGTGGACGTGAGGAGCCGGGACGCCCGGGGCTGACTCCACTGGCATATGCTCGCC
 GGGCCGGCAGCAGGAGTGTGCAGACATCTTGATCCAGCATGGCTGCCCTGGGAGGGCTGTGGCTTAGC
 GCCTACCCCCAACAGAGAGCCTGCCAATGGCACCAACCCCTCTGCTGAGCTGCACCGTAGCTAGCCTC
 CTA

ACGCGTACGCGGCCGCTCGAG – GFP Tag – GTTTAA

Protein Sequence: >RG212440 representing NM_031946
 Red=Cloning site Green=Tags(s)

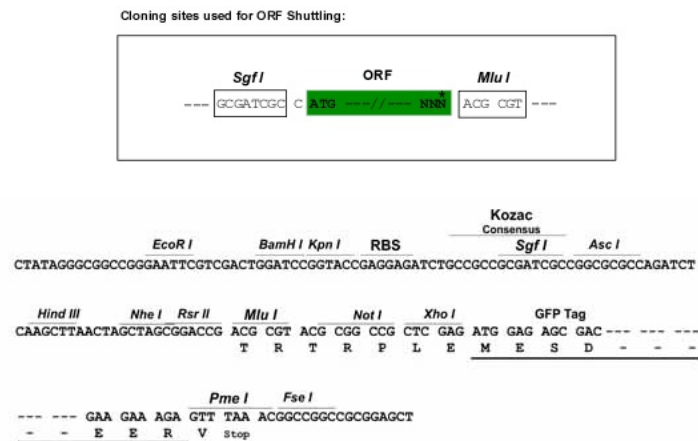
MNFQAGGGQSPQQQSLAAPGGGGAAQQLVCGGQFGGAGPGAGGGGSPSQQLAGGPPQQFALSNSAAIR
 AEIQRFEVHPNIYAIYDLIERIEDLALQNQIREHVISIEDSFVNSQEWTLRSVPKLVGIVGNLSSGK
 SALVHRYLTGTYYQEESPEGGFRKKEIVVDGQSYLLLRDEGGPELQFAAWVDVAVFVFSLEDEISFQT
 VYNYFLRLCSFRNASEVPMVLVGTQDAISAANPRVIDDSRARKLSTDLCRCTYYETCATYGLNVERVFQD
 VAQKVVALRKKQQLAIGPCKSLPNSPSHSAVSAASIPAVHINQATNGGSAFSDYSSSVSTPSISQREL
 RIETIAASSTPTPIRKQSKRRSNIFTSRKGADLDREKKAEECKVDSIGSGRAIPIKQGILLKRSKSLNK
 EWKKKYVTLCDNGLLTYHPSLDHYMQNIHGKEIDLRTTVKVPKGRLPRATPATAPGTSRANGLSVERS
 NTQLGGGTGAPHSASSASLHSEPLSSSAWAGPRPEGLHQRSCSVSSADQWSEATSLPPGMQHPASGPA
 EVLSSSPKLDPPSPHSNRKKHRRKKSTGTPRPDGPSSATEEAEESFEFVVVSLTGQTHWFEASTAEERE
 LWVQSVQAQILASLQGCRAKDKTRLGNQNAALAVQAVRTVRGNSFCIDCDAPNDWASLNLGALMCIEC
 SGIHRHLGAHLRVRSLDLDDWPELLAVMTAMGNALANSVWEGALGGYSKPGPDACREEKERWIRAKYE
 QKLFLAPLPSSDVPLGQQLRAVVEDDLRLVMLLAHGSKEEVNETYGDGDGRTALHLSSAMANVFTQL
 LIWYGVDVRSRDARGLTPLAYARRAGSQECADILIQHGCPGEGCGLAPTPNREPANGTNPSELHRSPSL
 L

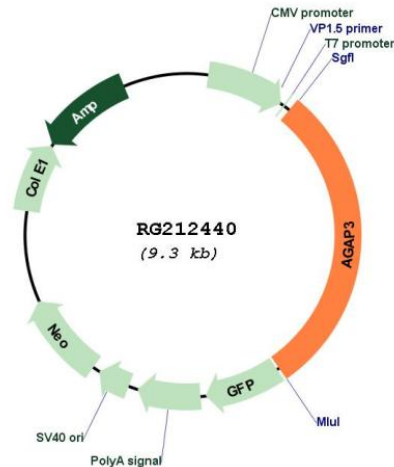
TRTRPLE – GFP Tag – V

Restriction Sites:

SgfI-MluI

Cloning Scheme:



Plasmid Map:


ACCN: NM_031946

ORF Size: 2733 bp

OTI Disclaimer: The molecular sequence of this clone aligns with the gene accession number as a point of reference only. However, individual transcript sequences of the same gene can differ through naturally occurring variations (e.g. polymorphisms), each with its own valid existence. This clone is substantially in agreement with the reference, but a complete review of all prevailing variants is recommended prior to use. [More info](#)

OTI Annotation: This clone was engineered to express the complete ORF with an expression tag. Expression varies depending on the nature of the gene.

Components: The ORF clone is ion-exchange column purified and shipped in a 2D barcoded Matrix tube containing 10ug of transfection-ready, dried plasmid DNA (reconstitute with 100 ul of water).

Reconstitution Method:

1. Centrifuge at 5,000xg for 5min.
2. Carefully open the tube and add 100ul of sterile water to dissolve the DNA.
3. Close the tube and incubate for 10 minutes at room temperature.
4. Briefly vortex the tube and then do a quick spin (less than 5000xg) to concentrate the liquid at the bottom.
5. Store the suspended plasmid at -20°C. The DNA is stable for at least one year from date of shipping when stored at -20°C.

RefSeq: [NM_031946.7](#)

RefSeq Size: 3247 bp

RefSeq ORF: 2736 bp

Locus ID: 116988

UniProt ID: [Q96P47](#)

Cytogenetics: 7q36.1

Domains: ArfGap, PH, ANK, RAS, RAB

Gene Summary: This gene encodes an essential component of the N-methyl-D-aspartate (NMDA) receptor signaling complex which mediates long-term potentiation in synapses by linking activation of NMDA receptor to alpha-amino-3-hydroxy-5-methyl-4-isoxazolepropionic acid (AMPA) receptor trafficking. The encoded protein contains an N-terminal GTPase-like domain, a pleckstrin homology domain, an ArfGAP domain and several C-terminal ankryn repeat domains. [provided by RefSeq, Apr 2017]