

Product datasheet for **RG212435**

ARHGAP6 (NM_013423) Human Tagged ORF Clone

Product data:

Product Type:	Expression Plasmids
Product Name:	ARHGAP6 (NM_013423) Human Tagged ORF Clone
Tag:	TurboGFP
Symbol:	ARHGAP6
Synonyms:	RHOGAP6; RHOGAPX-1
Mammalian Cell Selection:	Neomycin
Vector:	pCMV6-AC-GFP (PS100010)
E. coli Selection:	Ampicillin (100 ug/mL)



[View online »](#)

ORF Nucleotide Sequence:

>RG212435 representing NM_013423
 Red=Cloning site Blue=ORF Green=Tags(s)

TTTTGTAATACGACTCACTATAGGGCGGCCGGAATTCGTCGACTGGATCCGGTACCGAGGAGATCTGCC
 GCC**CGGATCGCC**

ATGTCAGGCCCGAGTGTACGGCTGAGGTACGTCCCATCCAGAGTCTCTCAGAGCTGGAGAGGGCCCGGC
 TGCAGGAAGTGGCTTTTTATCAGTTGCAACAGGACTGTGACCTGAGCTGTGAGATCACCATTCCCAAAGA
 TGGACAAAAGAGAAAGAAATCTTTAAGAAAGAAACTGGATTCACTAGGAAAGGAGAAAAACAAAGACAAA
 GAATTCATCCCACAGGCATTTGGAATGCCCTTATCCCAAGTCATTGCGAATGACAGGGCCTATAAACTCA
 AGCAGGACTTGCAGAGGGACGAGCAGAAAGATGCATCTGACTTTGTGGCTTCCCTCCTCCCATTTGGAAA
 TAAAAGACAAAACAAAGAACTCTCAAGCAGTAACCTATCTCTCAGCTCAACCTCAGAAACACCGAATGAG
 TCAACGTCCCAAACACCCCGAACCGGCTCCTCGGGCTAGGAGGAGGGGTGCCATGTCAGTGGATTCTA
 TCACCGATCTTGATGACAATCAGTCTCGACTACTAGAAGCTTTACAACCTTCTTGCCTGCTGAGGCTCA
 AAGTAAAAGGAAAAAGCCAGAGATAAGAACTCAGTCTGAATCCTATTTACAGACAGGTCCTAGGCTG
 GTGGACAGCTGTGTGACACCTAGAAAAACATGGCCTCCAGACAGTGGGGATATCCGAGTTGGAAGCT
 CAAAAAGAGAGTGAGACAATTACGTGAGGAATTTGACCGTGGGATTGATGTCTCTCTGGAGGAGGAGCA
 CAGTGTTCATGATGTGGCAGCCTTGCTGAAAGAGTTTCTGAGGGACATGCCAGACCCCTTCTCACCAGG
 GAGCTGTACACAGCTTTCATCAACACTCTTGTGGAGCCGGAGGAACAGCTGGGCACCTTGCAGCTCC
 TCATATACCTTCTACCTCCCTGCAACTGCGACACCCTCCACCGCTGCTACAGTTCTCTCCATCGTGGC
 CAGGCATGCCGATGACAACATCAGCAAAGATGGCAAGAGGTCACTGGGAATAAAATGACATCTCTAAAC
 TTAGCCACCATATTTGGACCCAACTGCTGCACAAGCAGAAGTCATCAGACAAAGAATTTCAAGTTCAGA
 GTTCAGCCCGGGCTGAGGAGAGCACGGCCATCATCGCTGTTGTGCAAAAGATGATTGAAAATTTATGAGC
 CCTGTTTCATGGTTCCCCCAGATCTCCAGAACGAAGTGTGATCAGCCTGTTAGAGACCGATCCTGATGTC
 GTGGACTATTTACTCAGAAGAAAGGCTTCCCAATCATCAAGCCCTGACATGCTGCAAGTTCGGAAGTTTCT
 TTTCCGTGGGAGGGAGGCATTCTACAGACTCCAACAAGGCCTCCAGCGGAGACATCTCCCTTATGA
 CAACAACCTCCCAAGTGTGTCTGAGCGCTCCCTGCTGGCTATGCAAGAGGACGCGGCCCGGGGGCTCG
 GAGAAGCTTTACAGAGTGCCAGGGCAGTTTATGCTGGTGGGCCACTTGTCTGTCGTCAAAGTCAAGGGAAA
 GTTCTCCTGGACCAAGGCTTGGGAAAGATCTGTCAGAGGAGCCTTTCGATATCTGGGAACTTGGCATT
 AACATTAAGCGGATCCAAGACCCAGGAATGACAGGTTCTCTGGAGACATTTTGAAGCAGCTCC
 CTAAGAGCGGGCCCTGCTCCCTTCTCAAGGAACTGTCCCAAATGGCCTCGGTGGCAGGGGAGCC
 CCGCAGAGCTGGACAGCGACACGACAGGGGCTCGGAGGACTCAGGCCGACGCCCCCGCAGCGGAGGGCAG
 GGCCACCTGCGGTGTGCGCGCCTGCAGCACGCCCCACGTCCAGGTGGCAGGGAAGCCGAGCGGCC
 ACGGCCAGGTCCGAGCAGTACTTGACCCTGAGCGGCGCCACGACCTCAGCGAGAGTGAGCTGGATGTGG
 CCGGGTGCAGAGCCGGGCCACACTCAGTGCCAAAGACCCCATGGGAGTGGGAGGGATGACAAGCGGCC
 CCCGCCTCATACCCGGGCCAGGGAAGCCCGCGCAGCGGCAGCCTGGATCCAGGGGCCCGGAAGGC
 GTGGAGACACCCACGGACCAGGGAGGCCAAGCAGCCGAGCGAGAGCAGCAGGTACGCAGAAAAAACTGA
 GCAGAGAGAGCGCTGGCAGATCTGGGAGCTCCTGTCGACCGACAACCCCGATGCCCTGCCGAGACGCTG
 GTC

ACGCGTACGCGGCCGCTCGAG – GFP Tag – GTTTAA

Protein Sequence: >RG212435 representing NM_013423
 Red=Cloning site Green=Tags(s)

```

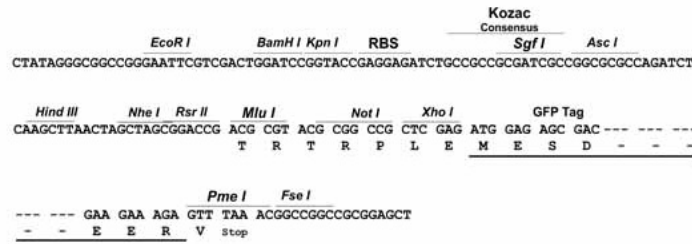
MSGRSVRLRSVPIQSLSELERARLQEVAFYQLQQDCDLSQITIPKDGQKRKSLRKKLDSLGEKKNKDK
EFIPQAFGMPLSQVIANDRAYKLRKQDLQRDEQKDASDFVASLLPFGNKRQNKELSSSNSSLSTSETPNE
STSPNTPPEPAPRARRRRGAMSVDSITDLDDNQSRLLLEALQLSLPAEAQSKKEKARDKKLSLNPIYRQVPR
VDSCCQHLEKHGLQTVGIFRVGSSKKRVRQLREEFDRGIDVSLIEEEHSVHDVAALLKEFLRDMPPDLLTR
ELYTAFINTLLLEPEEQGLTQLLIYLLPPCNCNTLHRLQLFLSIVARHADDNISKDGEVTVGNKMTSLN
LATIFGNLLHKQKSSDKEFSVQSSARAEESTAI IAVVQKMIENYEALFMVPPDLQNEVLISLLETDPDV
VDYLLRRKASQSSSPDMLQSEVSF SVGGRHSSTDSNKASSGDISPYDNNSPVLSERLLAMQEDAAPGGS
EKLYRVPQGFM LVGHLSSSKRESSPGPRLGKDLSEEPFDIWTWHSTLKS GSKDPGMTGSSGDI FESS
LRAGPCSLSQGNLSPNWRWQGS PAELSDTQGARRTQAAAPATEGRAHPAVSRACSTPHVQVAGKAERP
TARSEQYLTLSGAHDLSESELDVAGLQSRATPQCQRPHGSGRDDKRPPPPYPGPGKPA AAAAAWIQGPPEG
VETPTDQGGQAAEREQQVTQKKLSSANSLPAGEQDSPRLGDAGWLDWQRERWQIWELLSTDNDALPETL
V
  
```

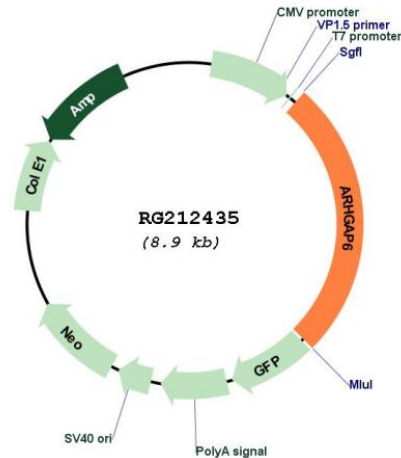
TRTRPLE - GFP Tag - V

Restriction Sites: SgfI-MluI

Cloning Scheme:

Cloning sites used for ORF Shuttling:



Plasmid Map:


ACCN: NM_013423

ORF Size: 2313 bp

OTI Disclaimer: The molecular sequence of this clone aligns with the gene accession number as a point of reference only. However, individual transcript sequences of the same gene can differ through naturally occurring variations (e.g. polymorphisms), each with its own valid existence. This clone is substantially in agreement with the reference, but a complete review of all prevailing variants is recommended prior to use. [More info](#)

OTI Annotation: This clone was engineered to express the complete ORF with an expression tag. Expression varies depending on the nature of the gene.

Components: The ORF clone is ion-exchange column purified and shipped in a 2D barcoded Matrix tube containing 10ug of transfection-ready, dried plasmid DNA (reconstitute with 100 ul of water).

Reconstitution Method:

1. Centrifuge at 5,000xg for 5min.
2. Carefully open the tube and add 100ul of sterile water to dissolve the DNA.
3. Close the tube and incubate for 10 minutes at room temperature.
4. Briefly vortex the tube and then do a quick spin (less than 5000xg) to concentrate the liquid at the bottom.
5. Store the suspended plasmid at -20°C. The DNA is stable for at least one year from date of shipping when stored at -20°C.

RefSeq: [NM_013423.3](#)

RefSeq Size: 3961 bp

RefSeq ORF: 2316 bp

Locus ID: 395

UniProt ID: [O43182](#)

Cytogenetics: Xp22.2

Domains: RhoGAP

Gene Summary: This gene encodes a member of the rhoGAP family of proteins which play a role in the regulation of actin polymerization at the plasma membrane during several cellular processes. This protein is thought to have two independent functions, one as a GTPase-activating protein with specificity for RhoA, and another as a cytoskeletal protein that promotes actin remodeling. Multiple alternatively spliced transcript variants encoding different isoforms have been found for this gene. [provided by RefSeq, Jul 2008]