

Product datasheet for **RG212420**

EEF2 (NM_001961) Human Tagged ORF Clone

Product data:

Product Type:	Expression Plasmids
Product Name:	EEF2 (NM_001961) Human Tagged ORF Clone
Tag:	TurboGFP
Symbol:	EEF2
Synonyms:	EEF-2; EF-2; EF2; SCA26
Mammalian Cell Selection:	Neomycin
Vector:	pCMV6-AC-GFP (PS100010)
E. coli Selection:	Ampicillin (100 ug/mL)



[View online »](#)

ORF Nucleotide Sequence:

>RG212420 representing NM_001961
 Red=Cloning site Blue=ORF Green=Tags(s)

TTTTGTAATACGACTCACTATAGGGCGGCCGGGAATTCGTCGACTGGATCCGGTACCGAGGAGATCTGCC
 GCC**CGGATCGCC**

ATGGTGAACCTCACGGTAGACCAGATCCGCGCCATCATGGACAAGAAGGCCAACATCCGCAACATGTCTG
 TCATCGCCACGTTGGACCATGGCAAGTCCACGCTGACAGACTCCCTGGTGTGCAAGGCGGGCATCATCGC
 CTCGGCCCGGGCGGGAGACACGCTTCACTGATACCCGGAAGGACGAGCAGGAGCGTTGCATCACCATC
 AAGTCAACTGCCATCTCCCTCTTCTACGAGCTCTCGGAGAATGACTTGAACCTTCAAGCAGAGCAAGG
 ACGGTGCCGGTCTCTCATCAACCTCATTGACTCCCCGGGCATGTCGACTTCTCCTCGGAGGTGACTGC
 TGCCCTCCGAGTACCGATGGCGCATTGGTGGTGGTGGACTGCGTGTGAGCGTGTGCGTGCAGACGGAG
 ACAGTGTGCGGCAGGCCATTGCCGAGCGCATCAAGCCTGTGCTGATGATGAACAAGATGGACCGCGCCC
 TGCTGGAGCTGCAGCTGGAGCCGAGGAGCTCTACCAGACTTCCAGCGCATCGTGGAGAACGTGAACGT
 CATCATCTCCACCTACGGCGAGGGCGAGAGCGGCCCATGGGCAACATCATGATCGATCCTGTCCCTCGGT
 ACCGTGGGCTTTGGGTCTGGCCTCCACGGTGGGCCTTACCCTGAAGCAGTTTCCGCGAGATGTATGTGG
 CCAAGTTCGCGCCAAGGGGGAGGGCCAGTTGGGGCTGCCGAGCGGGCCAAGAAAGTAGAGGACATGAT
 GAAGAAGCTGTGGGTGACAGGACTTTGACCCAGCCAACGGCAAGTTCAGCAAGTCAAGCCACGAGCCCC
 GAAGGGAAGAAGCTGCCACGCACCTTCTGCCAGCTGATCCTGGACCCCATCTTCAAGGTGTTTATGCGA
 TCATGAATTTCAAGAAAGAGGAGACAGCAAACTGATAGAGAACTGGACATCAAAGTGGACAGCGAGGA
 CAAGGACAAAGAAGGCAAACCCCTGCTGAAGGCTGTGATGCGCCGCTGGCTGCCGGAGACGCTTG
 TTGCAGATGATCACCATCCACTGCCCTCCCCTGTGACGGCCAGAAGTACCCTGCGAGCTCCTGTACG
 AGGGCCCCCGGACGACGAGGCTGCCATGGCATTAAAGCTGTGACCCAAAGGCCCTTATGATGTA
 TATTTCCAAAATGGTGCCAACTCCGACAAAGGTCGGTTCTACGCCTTTGGACGAGTCTTCTCGGGGCTG
 GTCTCCACTGGCCTGAAGGTCAGGATCATGGGGCCAACTATAACCCTGGGAAGAAGGAGGACCTTACC
 TGAAGCAATCCAGAGAACAATCTTGTGATGGGCGCTACGTGGAGCCCATCGAGGATGTGCCTTGTGG
 GAACATTTGGGCTCGTGGGCTGGACCAGTTCCTGGTGAAGACGGGCACCATCACCACCTTCGAGCAC
 GCGCACAACATGCGGGTGTGAAGTTCAGCGTCAGCCCTGTTGTCAGAGTGGCCGTGGAGGCCAAGAACC
 CGGCTGACCTGCCAAGCTGGTGGAGGGGCTGAAGCGGCTGGCCAAGTCCGACCCATGGTGCAGTGCAT
 CATCGAGGAGTCGGGAGAGCACATCATCGCGGGCGCCGGCGAGCTGCACCTGGAGATCTGCCTGAAGGAC
 CTGGAGGAGGACCAGCCTGCATCCCCATCAAGAAATCTGACCCGGTCTGCTCGTACCGGAGACGGTCA
 GTGAAGAGTCGAACGTGCTCTGCCTCTCCAAGTCCCCAACAAGCACAACCGGCTGTACATGAAGGCGCG
 GCCCTTCCCCGACGGCCTGGCCGAGGACATCGATAAAGGCGAGGTGTCCGCCCTCAGGAGCTCAAGCAG
 CGGGCGGCTACCTGGCCGAGAAGTACGAGTGGGACGTGGCTGAGGCCCGCAAGATCTGGTGTCTTTGGG
 CCGACGGCACGGCCCAACATCCTCACCAGCATCACCAGGGTGTGAGTACCTCAACGAGATCAAGGA
 CAGTGTGGTGGCCGGCTTCCAGTGGGCCACCAAGGAGGGCGCACTGTGTGAGGAGAACATGCGGGGTGTG
 CGTTTCGACGTCCACGACGTACCCTGCACGCCAGCCATCCACCGGAGGGGGCCAGATCATCCCCA
 CAGCACGGCGCTGCCTCTACGCCAGTGTCTGACCGCCAGCCACGCCTCATGGAGCCATCTACCTTGT
 GGAGATCCAGTGTCCAGAGCAGGTGGTGGTGGCATCTACGGGTTTTGAACAGGAAGCGGGCCACGTG
 TTCGAGGAGTCCCAGGTGGCCGGCACCCCATGTTTGTGGTCAAGGCCTATCTGCCCGTCAACGAGTCT
 TTGGCTTACCGCTGACCTGAGGTCCAACAGGGCGGCCAGGCGTTCCCCAGTGTGTGTTTACCACCTG
 GCAGATCTGCCCGAGACCCCTTCGACAACAGCAGCCGCCAGCCAGGTGGTGGCGGAGACCCGCAAG
 CGCAAGGGCTGAAGAAGGCATCCCTGCCCTGGACAACCTCTGGACAAATTG

ACGGTACGCGGGCGCTCGAG – GFP Tag – GTTAA

Protein Sequence: >RG212420 representing NM_001961
Red=Cloning site Green=Tags(s)

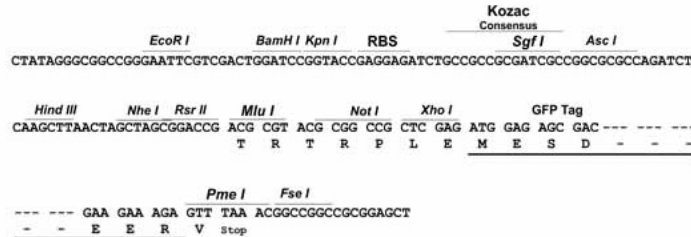
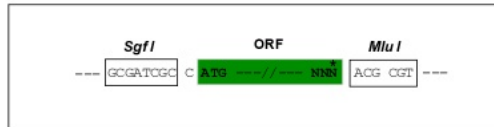
MVNFTVDQIRAIMDKKANIRNMSVIAHVDHGKSTLTDSLVCAGIIASARAGETRFTDTRKDEQERCITIKSTAIISLFYELSENDLNFIKQSKDGAGFLINLIDSPGHVDFSSEVTAALRVTDGALVVVDCVSGVCVQTE TVLRQAI AERIKPVLMNKMDRALLELQLEPEELYQTFQRIVENVNVIIISTYGESESGPMGNIMIDPVLG TVGFGSGLHGWAFTLKQFAEMYVAKFAAKGEGQLGPAERAKKVEDMMKKLWGDRYFDPANGKFSKSATSP EGKKLPRTF CQLILDPIFKVFDAIMNFKKEETAKLIEKLDIKL DSEDKKEGKPLLKAVMRRWLPAGDAL LQMITIHL PSPVTAQKYRCELLYEGPPDDEAAMGIKSCDPKGPLMMYISKMVPTSDKGRFYAFGRVFSGL VSTGLKVRIMGPNYTPGKKEDLYLKPIQRTILMMGRYVEPIEDVPCGNIVGLVGVQDFL VKTGTITTFEH AHNMRVMKFSVSPVVRVAEAKNPADLPKLVEGLKRLAKSDPMVQCIIEESGEHIIAGAGELHLEICLKD LEEDHACIPIKKS DPVVS YRETVSEESNLVCLSKSPNKHNL YMKARPPDGLAEDIDKGEVSARQELKQ RARYLAEKYEWDAEARKIWCFGPDGTGNILTDITKGVQYLNEIKDSVVAGFQWATKEGALCEENMRGV RFDVHDVTLHADAIHRGGGQIIP TARRCLYASVLT AQPRLMEPIYLVEIQCPQVVGGIYGV LNRKRGHV FEESQVAGTPMFVVKAYLPVNESFGFTADLR SNTGGQAF PQCVDHWQILPGDPFDNSSRPSQVVAETRK RKGLKEGIPALDNFLDKL

TRTRPLE - GFP Tag - V

Restriction Sites: Sgfl-Mlul

Cloning Scheme:

Cloning sites used for ORF Shutting:


ACCN: NM_001961

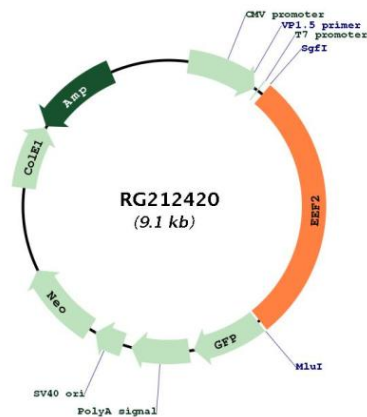
ORF Size: 2574 bp

OTI Disclaimer: Due to the inherent nature of this plasmid, standard methods to replicate additional amounts of DNA in *E. coli* are highly likely to result in mutations and/or rearrangements. Therefore, OriGene does not guarantee the capability to replicate this plasmid DNA. Additional amounts of DNA can be purchased from OriGene with batch-specific, full-sequence verification at a reduced cost. Please contact our customer care team at custsupport@origene.com or by calling 301.340.3188 option 3 for pricing and delivery.

The molecular sequence of this clone aligns with the gene accession number as a point of reference only. However, individual transcript sequences of the same gene can differ through naturally occurring variations (e.g. polymorphisms), each with its own valid existence. This clone is substantially in agreement with the reference, but a complete review of all prevailing variants is recommended prior to use. [More info](#)

OTI Annotation:	This clone was engineered to express the complete ORF with an expression tag. Expression varies depending on the nature of the gene.
Components:	The ORF clone is ion-exchange column purified and shipped in a 2D barcoded Matrix tube containing 10ug of transfection-ready, dried plasmid DNA (reconstitute with 100 ul of water).
Reconstitution Method:	<ol style="list-style-type: none"> 1. Centrifuge at 5,000xg for 5min. 2. Carefully open the tube and add 100ul of sterile water to dissolve the DNA. 3. Close the tube and incubate for 10 minutes at room temperature. 4. Briefly vortex the tube and then do a quick spin (less than 5000xg) to concentrate the liquid at the bottom. 5. Store the suspended plasmid at -20°C. The DNA is stable for at least one year from date of shipping when stored at -20°C.
RefSeq:	<u>NM_001961.2</u> , <u>NP_001952.1</u>
RefSeq Size:	3148 bp
RefSeq ORF:	2577 bp
Locus ID:	1938
UniProt ID:	<u>P13639</u>
Cytogenetics:	19p13.3
Domains:	EFG_C, GTP_EFTU, GTP_EFTU_D2, EFG_IV
Gene Summary:	This gene encodes a member of the GTP-binding translation elongation factor family. This protein is an essential factor for protein synthesis. It promotes the GTP-dependent translocation of the nascent protein chain from the A-site to the P-site of the ribosome. This protein is completely inactivated by EF-2 kinase phosphorylation. [provided by RefSeq, Jul 2008]

Product images:



Circular map for RG212420