

Product datasheet for **RG212416**

KIF26B (NM_018012) Human Tagged ORF Clone

Product data:

Product Type: Expression Plasmids
Product Name: KIF26B (NM_018012) Human Tagged ORF Clone
Tag: TurboGFP
Symbol: KIF26B
Mammalian Cell Selection: Neomycin
Vector: pCMV6-AC-GFP (PS100010)
E. coli Selection: Ampicillin (100 ug/mL)
ORF Nucleotide Sequence: >RG212416 representing NM_018012
Red=Cloning site Blue=ORF Green=Tags(s)

TTTTGTAATACGACTCACTATAGGGCGGCCGGAATTCGTCGACTGGATCCGGTACCGAGGAGATCTGCC
GCCCGATCGCC

ATGAATTCGGTAGCTGGGAATAAGAGAGGCTTGCAGTCCACCAGGGGCAAGAAATACGGGTGAATG
AAGTCTGCTCGCCACCAAGCCCGCAGCGCCCTTCTCCCCGAAAGCTGGTACCGGAAAGCATACGAGGA
GTCGCGCGCCGGCAGCCGGCCACTCCTGAGGGCGCGGCTCAGCGCTCGGCTCCTCGGGGACCCCGTCT
CCCGGCTCGGGCACCTCGTCCCGAGCTCGTTCACCGGCTCCCGGGACCCGCTCCCGGCATCGGCA
CTAGTTCCGCGGGCTCCTTGGCGGCTCCTCGGGCTTCGGCACAGGCTCCCGGGCTCCGGCAGCGCGG
CGGCTCCTCCCGGCTCGGACCGCGGCTCTGGTGCAGAACTGCAACGCCCGCTGGTGGAGCTCAAG
AGGCAGGCCCTGAGGTTGCTCCTCCCGGGCCCTCCCGGCAAGGACCTGCTTCTCGGCTGTGATTC
ACGACAACTCCAGTCCCAACACCATCCGGAAGGCATGGAACGACCGGACAACCGCTGTGACATTTG
CGCCACTCACCTGAACCAGTTGAAGCAGGAGGCCATCCAGATGGTGTGACGTTGGAGCAGGCAGCCGGC
AGTGAGCACTACGACGCTCGCCCTGCTCCCGCCACCGCTCTCAACATCCCAACCTGGTGGGTCCC
GGCAGTGGGTGGGCTCCAGCAGCCAGAGACTGGGCTTTGTGCCCGCCCTGTGCCACCTCAAATA
CACAGGCTTCGCAACAAGCAGCGCAGCAAAACCAGCAGCCTTGGGTGAGCAATGGGGCGAAAAGAAG
AGCGGGTCCCAACCCACGAGCAAGGTGAGCCTCCAGATGGCCACCAGTCCAAGCAATGGAAATCC
TCAATTCGGTGGCCATCCAGGCTCACCAGTACCTGGATGGCACCTGGTCCCTGTGAGAAACACGGGT
CACCCTGTACCCATACCAGATCTCCAGCTGATGACAGAGAGTAGCCGGGAGGGACTAACAGAAGCAGTG
CTGAACCGCTACAATGCAGACAAGCCTTCCGCTGCGAGTGTCCAGCCTCGCAGGGCTCCTGCGTGGCCA
GCGAGACTTCCACAGGCACATCGGTGGCCGCTCCTTCTTTCACGAGCTGCCAGAAAGTAAATCTGTC
TTCTAAAAGAAGAAATCGGCCTTCCACTTCTCCGCTGCCGAACCACCGCTCTTTCGAACAGCTTC
AGTGGGATTCTGCAGACCTCCCTCCCGCAGCCCAACCTGCCTGCTGAGGGCTGTCAACAAGGTGAAGG
ACACCCCGGGGCTGGCAAGGTGAAAGTCATGCTTCGCATCTGTCCACCTTGGCTCGAGATACTTCAGA
ATCCAGCTCTTTCTTAAAGGTGGACCCAGGAAGAAGCAGATCACCTTGTACGATCCCCTGACTTGTGGA
GGTCAAAATGCCTTCCAAAAGAGAGGCAACCAGGTTCTCCAAAAGATGTTTGCCTTCGATGCAGTTTTTC
CACAAGACGCTTCTCAGGCTGAAGTGTGTGACAGCACCGTGGCAGAGGTGATCCAGTCTGTGGTCAACGG



[View online »](#)

GGCAGATGGCTGCGTGTCTGTTTCGGCCACGCCAAACTGGGAAAATCCTACACCATGATCGGAAAGGAT
GATTCCATGCAGAACCTGGGCATCATTCCCTGTGCCATCTCTTGCTCTTCAAGCTCATAAACGAACGCA
AGGAAAAGACCGGCGCCCGTTTCTCAGTCCGGGTTTCCGCGTGGAAAGTGTGGGGGAAGGAGGAGAACCT
GCGGGACCTGCTGTCGGAGGTGGCCACGGGCAGCTGCAGGACGGCCAGTCCCGGGCGTGTACCTCTGT
GAGGACCCCATCTGCGGCACGCAGCTGCAGAACCAGAGCGAGCTGCGGGCCCCACCGCAGAGAAGGCTG
CCTTTTTCTGGATGCCGCCATTGCCTCCCGCAGGAGCCACCAACAGGACTGTGATGAGGACGACCACCG
CAACTCACAGTGTCTTACACTGCACATCTACCAGTACCGGATGGAGAAGAGCGGGAAAAGGGGAATG
TCTGGAGGTGCGACGCCCTGCATCTCATTGATCTCGGCAGCTGTGTGAAAGCTCTTAGCAAAAATCGAG
AAGGAGGCTCAGGGCTGTGTCTCTCGTGTCTGCTCTGGCAATGTCATCCTGGCTCTGTCATGGCAG
CAAACACATTCCATACAAAGAGAGCAAGCTCGCCATGTTGCTGCGGGAGTCTCTGGGAACATGAACTGC
CGTACCACCATGATCGCGCACATCTCGCCCGGGTGGGAGCTACGCGGAGACCTGTCCACCATCCAGA
TTGCATCGAGAGTCTTGAGGATGAAGAAAAGAAGACGAAGTACACATCCAGCTCGTCCGGCGGGGAGAG
CTCCTGCGAAGAAGGCCGATGCGCAGGCCACCCAGCTGAGACCCTTCCACACCAGGGCCACGGTGGAC
CCTGACTTCCCCATCGCTCACCTGTCCAGCGACCCGACTACTCTCCAGCAGCGAGCAGTCTGCGACA
CCGTATCTACATCGGGCCAACGGCACGGCCCTCTGTACAAGGAGCTACCGACAACGAGGGCCCCC
AGACTTTGTCCCTATCGTGCCAGCCTGCAGAAGACCCGGGGCGCAGCCGGCCCCGAGAGGCAGGAGAG
GCTGCAGCCGGCAAGTCAGAAAGGGACTGCCTGAAGTGAACACGTTTGGCGAGCTGCAGGAGAGGCTGG
ACTGCATCGACGGCAGCGAGGAGCCAGCAGCTTCTTTTGAAGAACTGCCTGCTCAGTTTGGCCAGA
GCAGGCAAGCAGAGGCCCGCGTTAAGCCAAGCAGCGGGGCAAGCCACTCTCTGAGTCTGATAAGGAA
GATAATGGGTCCGAAGGTGAGTGCACCAACAGAGAAGGCCCTGAACTCCCAGCCTCAAGATGCAGAGGA
GTCACTCACCTGTGCCCGCCGGCACCCGCCACAGCCCAGCCGGCTCACCAGGAGCGTCCCGGG
CAGCAGTAGCCAGCACAGCGCTCCCACTCGTGCAGAGCCCAGCTCCAGAGCAGCCGGGAGAGCCTC
AACTCTGCGGCTTGTGGAAGGCAAGCCAGCCATGGGCTCCCGCGGCTGGCATCGCCAGCTGT
CCAAGACTCGGAGTACAAGCCACCCAGCTCTCTTCCAGAGATGCAAAAGTCTACACCCAGAAGGGGT
CCTGCCGTCTCCCGCCCACTGCCTCCCTCGAGCAAGGATTCCGGCGTGGCGTCTAGGGAGTCTTGCTG
CAGCCCGAGGTGCGTACGCCCCGTTGGAATGAGCCCCAGGTTTTGAAAAATCCATGTCTGCTGGGA
GCGAAGGGTCCCGAAACTCCTGTCGATGATGAGCAGCAGGCAGCTACTCTTCCAGAGTCCAAGAAGGA
GATCCTGAGCACCACGATGGTGACGGTGCAGCAGCCACTGGAGCTGAACGGTGGAGCAGCTGGTGTTC
ACGCTGGTGGAGGAGTGACCATCAGCGGGTCTGGACAGCGGCCGCCACCAGCATCATCAGCTTCA
ACAGCGACTGCTCTGACGGGCCCTGGCTCGGGCTCGCGGCCGTGAGCATCATCAGCAGCATCAGCGA
GGACCTGGAGTGTACTCCAGCACGGCCCCGTCTCCGAGGTGAGCATCACAGTCTTGGCCCTCCCG
AAGATGAGCCTGGATGAGAAGGCCAGGAGCAGGGAGCAGACGCTTCCATCAGCTCCTGGCTGAGCG
AGATGAGCGCGGGCAGTGAAGGTGAGCAGTCTGTCACAGTTTATAGCCAGACGTGTTTTGGGACCG
GGAGGCAATGGCAGAACCTGTGGCTCGGAGTTTGTGAGCAGCTCCAGAACACCCTGTGGTGTGAGAG
GAGAAGCCCAAGGCCAGCCCCGACAATTTGCTCATCTGTCTGAGATGGGAGATGACTCTTTCAACAAAG
CAGCCCCATCAAAGGCTGCAAAATATCCACAGTGAAGCAAGGATGTTGACCATCTCCAACACGGCCAA
TCTGAGCAGTGCAGGGGTACATCCCCATGAAGACCAATATCACAGTTTACCCCTGCATTGCCATGAGC
CCCCGAAACATCAAAGAGCCGGAGGCCCCACCCGCCACCCCAAGCAGGCCACATTAAGCCAGTCCC
GGGAGAGTAAGGAAAACAGTGAAGAAAAGAGATGAAATTTGAGGACCCGTGGCTGAAACGAGAAGAGGA
AGTGAAAAAAGAGACGGCTCATCCAATGAAGAAGGATGATGAGGTGTGAGACTGCCACGGGCCCTCG
AATGCTGAGACCAGAGCAGAGCAGGAGCAGGACGAAAGCCAGTCCGGGAGACAGGCTCAGCAGCAGCA
GCGGAGAGGTGTGCGCTCCCGGTCACTGACAACTTCAAGAGGGTGTGGATGGGTGTGAGATGGCCCT
GCCCGTTTTGGCCACCCAGAGCCCGTGCATCCCAACAAAAGCGTCAAGTCCAGCAGCTTCCAGGGCC
TTTCAGAAAGGCCAGCCGGCAGGAGGAGCCGGACAGCTCTCTATTACTGCGTGTGAGACCAACGGGG
TGGGTGACGCTCGGGCACCCCGCCCTCAAGGCTACCTGGAGGGGAAGGTGGCTTCCCCAAGCACTG
TGTTCTGGCTCGGCCAAAGGACTCCCCCTGTCCCCCTGTCCGAAAGTCCAGCCTGGACCAGAAGAAC
CGGGCCAGCCCTCAGCACAGTGCAGCGGCAGCGCACAGCAGCCCCGAACCAACAGCCGCTTCC
CGCGGGCTCCAGACGAGCCTAGCGGCAAGACGAAGGACGCCAGCAGCAGCAGCAAGCTTTCAGTGC
CAAGCTGGAGCAGCTGGCCAGCAGAAGCAACTCGCTGGGACGGGCGACAGTCAAGCACTACGAATGCCTC
TCCTGGAGCGGGCCAGAGCCTGTCTCCGTGAGCTCCCGGCTGCACGCGGGCAAGGACGGCACCATGC
CCCGCGGGGAGGAGCCTGGGCCGAGCGCGGGACCTCGCCCCAGCTCCGGGGCTCGCCAAAGGC
CGCCAGTCCAAGATCTCCGCCGTGAGCAGACTCTCTGGCCAGCCCCAGAGCGCGGGCCCTCGCC

TCCACCACAAAACCCTCAGCTTCTCCACCAAGTCCCTGCCGCAGGCGGTGGGCCAGGGCTCCAGCTCGC
CCCCCGGTGGGAAGCACACGCCCTGGTCCACGCAGTCCCTCAGCAGGAACAGGAGCTCGGGCCTGGCCTC
CAAGCTTCCCCTGCGGGCCGTACGCGGGCGCATCTCGGAGCTGCTGCAGGGTGGCGGGGCGCCCGGGGC
TTGCAGCTGCGGGCCGGGCCGAGGCGGAGGCGCGGGGGGGCCCTGGCCGAGGACGAGCCCGCGGCCG
CGCACCTGCTCCCGTCCGCTACAGCAAGATCACGCCCCGCGGAGGCCACCCTGCAGCAGCGGCCA
CGGCAGCGACAACAGCAGCGTGTGAGCGGGGAGCTCCCGCCGGCCATGGGGAAGACGGCCCTGTTCTAC
CACAGCGGCGGCAGCAGCGGCTACGAGAGCGTGATGCGGGACAGCGAGGCCACCGCAGCGCGTCCCTCG
CGCAGGACTCCACGAGCGAGAACAGCAGCTCCGTGGGCGGCAGGTGCCGAGCCTCAAGACCCCGAAGAA
ACGCTCCAATCCAGTTCTCAGAGACGGAGGCTTATCCCAGCACTATCCCTGGACACCTTCTCCCCTGTG
AGAAAACCCCAACAGCACAGGCGTCCGCTGGGTGGATGGCCCTTGGCGGAGCAGCCGAGGGGCCTTG
GGGAACCCTTTGAGATTAAGTCTATGAAATCGATGACGTGGAGCGCCTGCAGCGCGCAGAGGGGTGC
CAGCAAGGAGGCCATGTGCTTAATGCAAAGCTGAAGATTCTGGAACACCGCCAGCAGAGGATCGCCGAG
GTCCGCGCAAGTACGAGTGGCTGATGAAGGAGCTGGAGGCGACCAAACAGTATCTGATGCTGGATCCCA
ACAAGTGGCTCAGTGAATTTGACTTGGAGCAGGTTTGGGAGCTGGATTCCCTGGAGTACCTGGAGGCACT
GGAGTGTGTGACGAGCGCCTGGAGAGCGGTGCAACTTCTGCAAGGCCATCTCATGATGATCACCTGC
TTCGACATCACCTCCAGGCGCCG

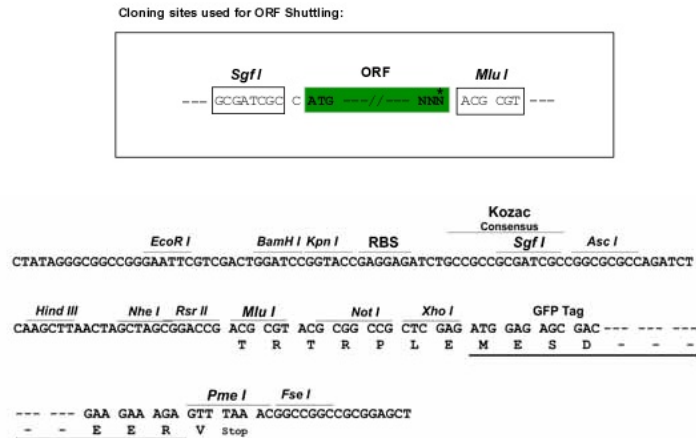
ACGCGTACGCGGCCGCTCGAG – GFP Tag – GTTTAA

Protein Sequence: >RG212416 representing NM_018012
 Red=Cloning site Green=Tags(s)

MNSVAGNKERLAVSTRGKKYGVNEVCSPTKPAAPFSPESWYRKAYEESRAGSRPTPEGAGSALGSSSGTSPS
 PGSGTSSPSSFTGSPGPASPGIGTSSPGSLGGSPGFGTSPGSGSGGGSSPGSDRGVWCENCNARLVELK
 RQALRLLLPGFPGKDPAFSAVIHDKLQVPNTIRKAWNDRDNRCDICATHLNQLKQEIQMVLTLEQAAG
 SEHYDASPCSPPLSNIPTLVGSRHVGLQQRDWFVPAFCATSNYTGAFANKHGSKPSSLGVSNGAEKK
 SGSPTHQAKVSLQMATSPSNGNINLSVAIQAHQYLDGTWLSRTNGVTLYPYQISQLMTESSREGLTEAV
 LNRYNADKPSACSVPASQGCVASETSTGTSVAASFFARAAQKLNLSKSKKHKRSTSSAAEPLFATSF
 SGILQTSPPPAPPCLLRVNVKVDTPGLGKVKVMLRICSTLARDTSESSSFLKVDPRKKQITLYDPLTCG
 GQNAFQKRGVPPKMFADAVFPQDASQAEVCAGTVAEVIQSVVNGADGCVFCFHAKLGKSYTMIGKD
 DSMQNGLIIPCAISWLFKLINERKEKTGARFSRVSAVEVWGKEENLRDLLSEVATGSLQDQSPGVYLC
 EDPICGTQLQNQSELRAPTAEKAAFFLDAAIASRRSHQQDCDEDDHRNSHVFFTLHIYQYRMEKSGKGGM
 SGGRSRLHLIDLGSCVKALSKNREGGSGCLSLSALGNVILALVNGSKHIPYKESKLAMLLRESLGNMNC
 RTTMIAHISAAVGSYAETLSTIQIASRVLRMKKKTKYTSSSSGGESSCEEGRMRRTQLRPFHTRATVD
 PDFPIAHLSSDPYSSSEQSCDTVIYIGPNGTALSDKELTDNEGPPDFVPIVPAQKTRGDSRPAEAGE
 AAAGKSERDCLKNTFAELQERLDCIDGSEEPSFFPEELPAQFGPEQASRGPRLSQAAGASPLSESDKE
 DNGSEGQLTNREGPELPASKMQRSHSPVAAAAPAHSPSPASPRVPGSSSQHSASPLVQSPSLQSSRESL
 NSCGFVEGKPRMPGSPRLGIASLKTSEYKPPSSPSQRCKVYTKGVLPSAPLPPSSKDSGVASRESLL
 QPEVTRPPVGMSPQVLKKSMSAGSEGFPETPVDDEQQAATPSESKKEILSTTMVTVQQPLELNGEDELVF
 TLVEELTISGVLDSGRPTSIISFNSDCSARALASGSRPVSIISISSEDLECYSSAPVSEVSITQFLPLP
 KMSLDEKAQDAGSRSSISSWLSEMSAGSEGEQSCHSFIAQTCFGHGEAMAEPVASEFVSSLQNTAVVCR
 EKPKASPDNLLILSEMGDDSFNKAAPIKGCKISTVSKAMVTISNTANLSSCEGYIPMKTNIIVYPCIAM
 PRNIQEPEAPTATPKAGPTLAQSRESKENSAKKEMKFEDPWLKREEEVKETAHPNEEGMMRCETATGPS
 NAETRAEQEQDGKPSGDRLSSSSGEVSAVPTDNFRRVVDGCEMALPGLATQSPVHPNKSVKSSSLPRA
 FQKASRQEEPDLSYYCAAETNGVGAASGTPPSKATLEGKVASPKHCVLARPKGTPPLPPVRKSSLDQKN
 RASPQHSASGSGTSSPLNQPAAFPAGLPDEPSGKTKDASSSSKLFSAKLEQLASRSNSLGRATVSHYECL
 SLERAESLSSVSSRLHAGKDGTMPRAGRSLGRSAGTSPSSGASPKAGQSKI SAVSRLLLASPRARGPSA
 STTKTLFSFKSLPQAVGQSSSPPGGKHTPWSTQSLSRNRSSGLASKLPLRAVSGRISSELLQGGAGARG
 LQLRAGPEAEARGGALAEDEPAAAHLPSPYSKITPPRRPHRCSGHSNDSSVLSGELPPAMGKTALFY
 HSGGSSGYESVMRDSEATGSASSAQDSTSENSSVGGRCRSLKTPKKRSNPGSQRRRLIPALSLDTSPPV
 RKPPNSTGVRWVDGPLRSSPRGLGEPFEIKVYEIDDVERLQRRRGASKEAMCFNAKLIKILEHRQRIAE
 VRAKYEWLMKELEATKQYMLDPNKWLEFDLEQVWELDSLEYLEALECVTERLESRVNFCNAHLMMITC
 FDITSRRR

TRTRPLE - GFP Tag - V

Restriction Sites: SgfI-MluI

Cloning Scheme:


ACCN: NM_018012

ORF Size: 6324 bp

OTI Disclaimer: Due to the inherent nature of this plasmid, standard methods to replicate additional amounts of DNA in E. coli are highly likely to result in mutations and/or rearrangements. Therefore, OriGene does not guarantee the capability to replicate this plasmid DNA. Additional amounts of DNA can be purchased from OriGene with batch-specific, full-sequence verification at a reduced cost. Please contact our customer care team at custsupport@origene.com or by calling 301.340.3188 option 3 for pricing and delivery.

The molecular sequence of this clone aligns with the gene accession number as a point of reference only. However, individual transcript sequences of the same gene can differ through naturally occurring variations (e.g. polymorphisms), each with its own valid existence. This clone is substantially in agreement with the reference, but a complete review of all prevailing variants is recommended prior to use. [More info](#)

OTI Annotation: This clone was engineered to express the complete ORF with an expression tag. Expression varies depending on the nature of the gene.

Components: The ORF clone is ion-exchange column purified and shipped in a 2D barcoded Matrix tube containing 10ug of transfection-ready, dried plasmid DNA (reconstitute with 100 ul of water).

Reconstitution Method:

1. Centrifuge at 5,000xg for 5min.
2. Carefully open the tube and add 100ul of sterile water to dissolve the DNA.
3. Close the tube and incubate for 10 minutes at room temperature.
4. Briefly vortex the tube and then do a quick spin (less than 5000xg) to concentrate the liquid at the bottom.
5. Store the suspended plasmid at -20°C. The DNA is stable for at least one year from date of shipping when stored at -20°C.

RefSeq: [NM_018012.4](#)

RefSeq Size: 7287 bp

RefSeq ORF: 6327 bp

Locus ID: 55083

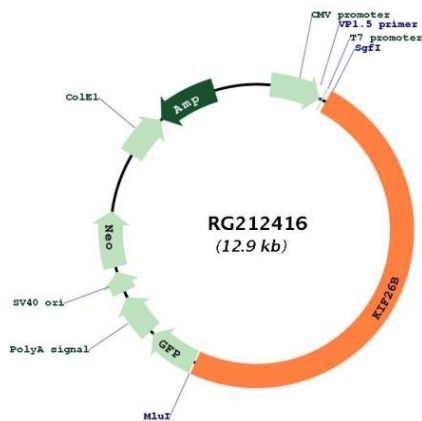
UniProt ID: [Q2KJY2](#)

Cytogenetics: 1q44

Protein Families: Druggable Genome

Gene Summary: The protein encoded by this gene is an intracellular motor protein thought to transport organelles along microtubules. The encoded protein is required for kidney development. Elevated levels of this protein have been found in some breast and colorectal cancers. [provided by RefSeq, Mar 2017]

Product images:



Circular map for RG212416